

20550 HOOVER STREET
DETROIT, MICHIGAN

INDUSTRIAL FOR SALE OR LEASE
27,661 Square Feet Available



**SIGNATURE
ASSOCIATES**
KNOW SIGNATURE | KNOW RESULTS



PROPERTY FEATURES

- 27,661 square feet available
- 13' - 24' clear height
- (2) grade level doors
- Zoned M-3
- Ample parking spaces
- No power in building
- Lease Rate: \$3.00/sq. ft. NNN
- Sale Price: \$695,000 (\$25.13/sq.ft.)



For more information, please contact:

CHRIS MONSOUR

(248) 948 0107

cmonsour@signatureassociates.com

JOE STACK

(248) 359 0615

jstack@signatureassociates.com

SIGNATURE ASSOCIATES

One Towne Square, Suite 1200

Southfield, MI 48076

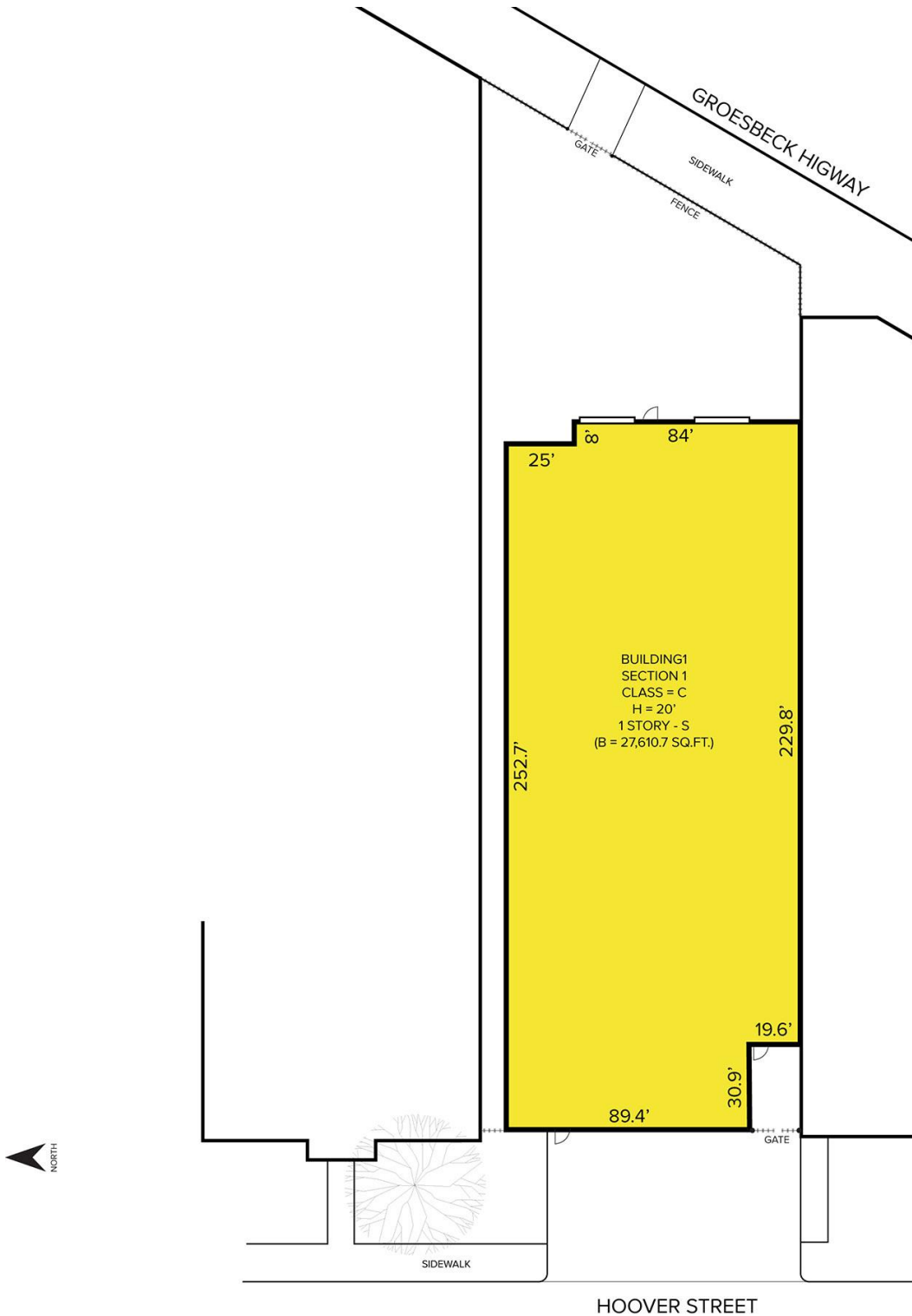
www.signatureassociates.com

20550 Hoover Street – Detroit, Michigan

Industrial For Sale or Lease

27,661
Square Feet
AVAILABLE

Site Plan



For more information, please contact:

CHRIS MONSOUR

(248) 948 0107

cmonsour@signatureassociates.com

JOE STACK

(248) 359 0615

jstack@signatureassociates.com

SIGNATURE ASSOCIATES

One Towne Square, Suite 1200

Southfield, MI 48076

www.signatureassociates.com

20550 Hoover Street – Detroit, Michigan

Industrial For Sale or Lease

27,661
Square Feet
AVAILABLE

Aerial



For more information, please contact:

CHRIS MONSOUR
(248) 948 0107
cmonsour@signatureassociates.com

JOE STACK
(248) 359 0615
jstack@signatureassociates.com

SIGNATURE ASSOCIATES
One Towne Square, Suite 1200
Southfield, MI 48076
www.signatureassociates.com

Information is subject to verification and no liability for errors or omissions is assumed. Price is subject to change and listing withdrawal.