



For Lease

Somerset Plaza

4601 - 4621 W 90th Street, Prairie Village, Kansas



PROPERTY FEATURES:

- 1,445 SF available in very tight Prairie Village market
- Easy conversion to retail, salon, fitness studio, or creative office space
- Recently renovated – Updated façade, new parapet wall, all new storefront glass, upgraded landscaping, repaved parking lot and sidewalks
- Generous T.I. package available for qualified tenants.
- **\$23/SF + NNNs**

For more information contact:

Hunter Seabaugh

hunter@cadencekc.com

913 484 3453

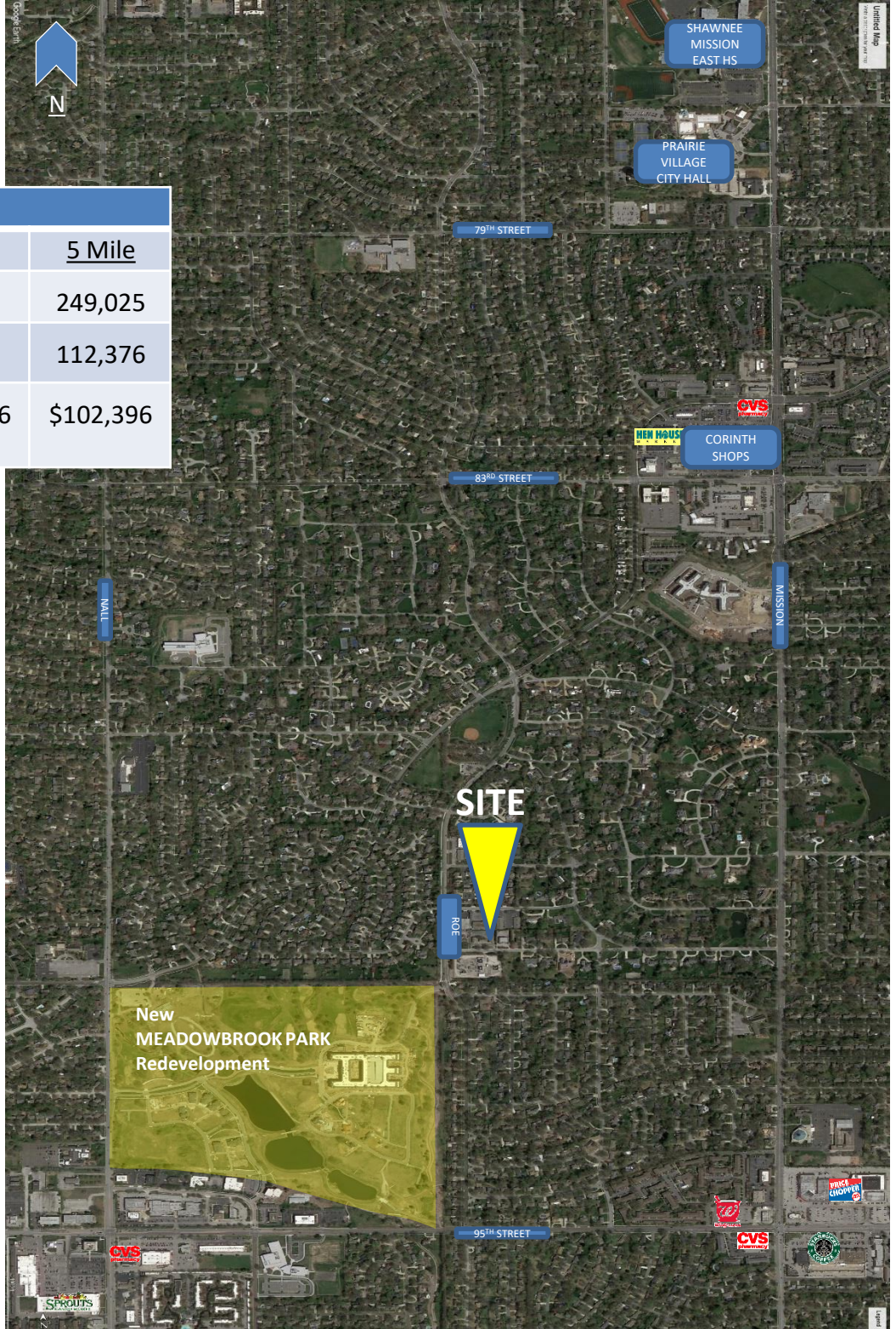
CADENCE
COMMERCIAL REAL ESTATE



For Lease

Somerset Plaza

4601 - 4621 W 90th Street, Prairie Village, Kansas



2019 Demographics

	<u>1 Mile</u>	<u>3 Mile</u>	<u>5 Mile</u>
<i>Population</i>	8,832	93,556	249,025
<i>Households</i>	3,657	43,200	112,376
<i>Average HH Income</i>	\$164,319	\$103,306	\$102,396

For more information contact:

Hunter Seabaugh

hunter@cadencekc.com

913 484 3453

CADENCE
COMMERCIAL REAL ESTATE