



FOR LEASE

Mendota Office Center III

1210 Northland Drive
Mendota Heights, MN



HOME

HIGHLIGHTS

AVAILABLE

LOCATION

For more information, please contact:

Dan Gleason
+1 952 893 8884
dan.gleason@cushwake.com

Dan Nechanicky
+1 952 820 8765
dan.nechanicky@cushwake.com

Cushman & Wakefield
3500 American Blvd W Suite 200
Minneapolis, MN 55431
cushmanwakefield.com

Mendota Office Center III

1210 Northland Drive, Mendota Heights, MN



HOME

HIGHLIGHTS

AVAILABLE

LOCATION

Property Highlights

- Custom designed space using Class “A” finishes
- Abundant parking with 5 stalls per 1,000 square feet
- Close proximity to Minneapolis/ St. Paul International Airport
- Established business park environment near high-growth professional and technical labor base
- Excellent access and visibility off I-494 and Pilot Knob Road

BUILDING INFORMATION

BUILDING SIZE	60,000 sq. ft.
---------------	----------------

YEAR BUILT	2000
------------	------

CLASS	A
-------	---

FLOORS	1
--------	---

PARKING RATIO	5/1,000
---------------	---------

LEASE RATE	\$13.00 per sq. ft.
------------	---------------------

2019 ESTIMATED TAX & OPER. EXP.	\$9.94 per sq. ft.
---------------------------------	--------------------



For more information, please contact:

Dan Gleason
+1 952 893 8884
dan.gleason@cushwake.com

Dan Nechanicky
+1 952 820 8765
dan.nechanicky@cushwake.com

Cushman & Wakefield
3500 American Blvd W Suite 200
Minneapolis, MN 55431
cushmanwakefield.com

Mendota Office Center III

1210 Northland Drive, Mendota Heights, MN



HOME

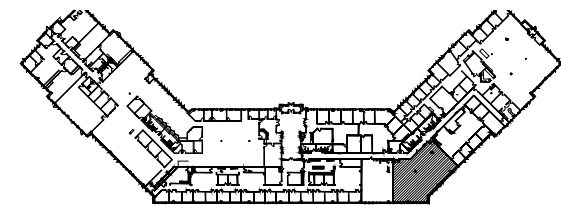
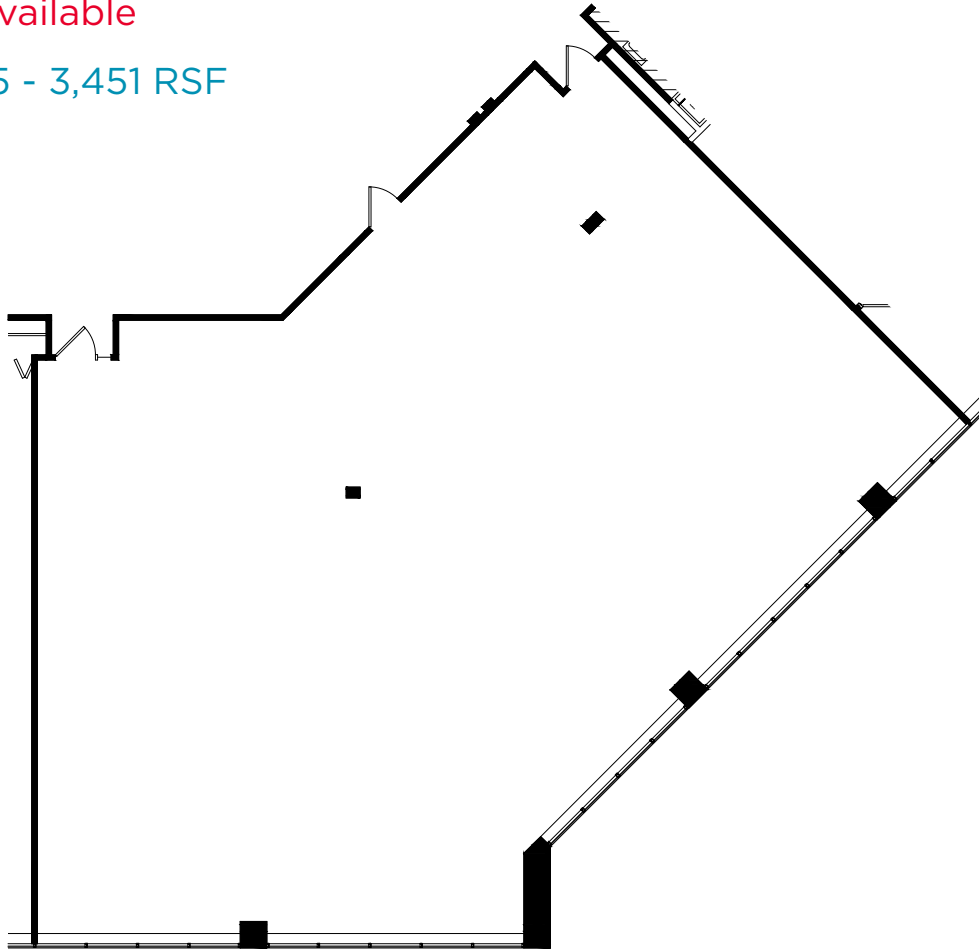
HIGHLIGHTS

AVAILABLE

LOCATION

Space Available

Suite 145 - 3,451 RSF



KEY PLAN

NOT TO SCALE



For more information, please contact:

Dan Gleason
+1 952 893 8884
dan.gleason@cushwake.com

Dan Nechanicky
+1 952 820 8765
dan.nechanicky@cushwake.com

Cushman & Wakefield
3500 American Blvd W Suite 200
Minneapolis, MN 55431
cushmanwakefield.com

Mendota Office Center III

1210 Northland Drive, Mendota Heights, MN



HOME

HIGHLIGHTS

AVAILABLE

LOCATION



For more information, please contact:

Dan Gleason
+1 952 893 8884
dan.gleason@cushwake.com

Dan Nechanicky
+1 952 820 8765
dan.nechanicky@cushwake.com

Cushman & Wakefield
3500 American Blvd W Suite 200
Minneapolis, MN 55431
cushmanwakefield.com