

# LIQUOR STORE BUILDING

16389 REDMOND WAY, REDMOND, WA

REDMOND RETAIL FOR LEASE



## FEATURES

- Abundant Onsite Parking
- Renovated in 2010
- Brand New Roof in 2008
- Excellent Signage Opportunity
- Easy Access to Freeway
- Minutes from Redmond Town Center & downtown
- Former WA State Liquor Store
- Space is divisible

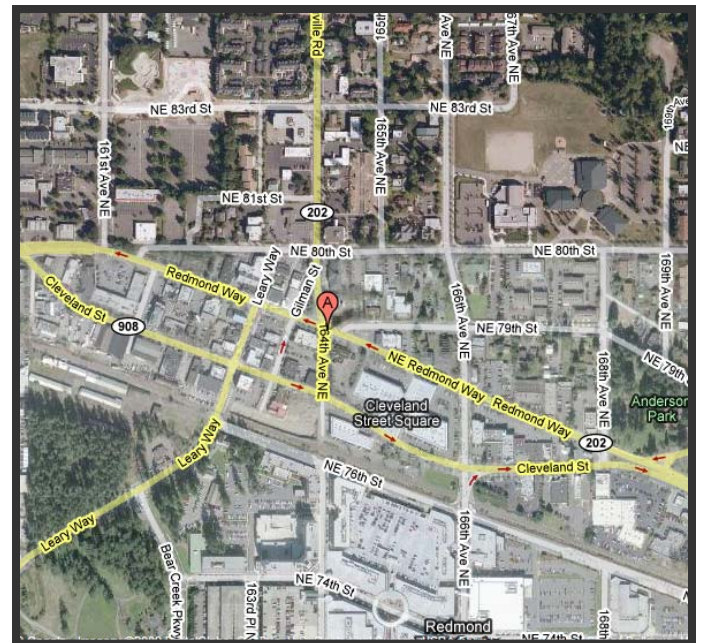
## LEASE INFORMATION

Lease Type	NNN
Available	30 days notice
Rent	\$30.00 RSF
Available Space	6,789 RSF

## FOR MORE INFORMATION CONTACT

### MICHAEL AZOSE

Direct: 425-974-4236  
Cell: 206-856-7576  
mazose@mpiha.com



### MORRIS PIHA REAL ESTATE SERVICES

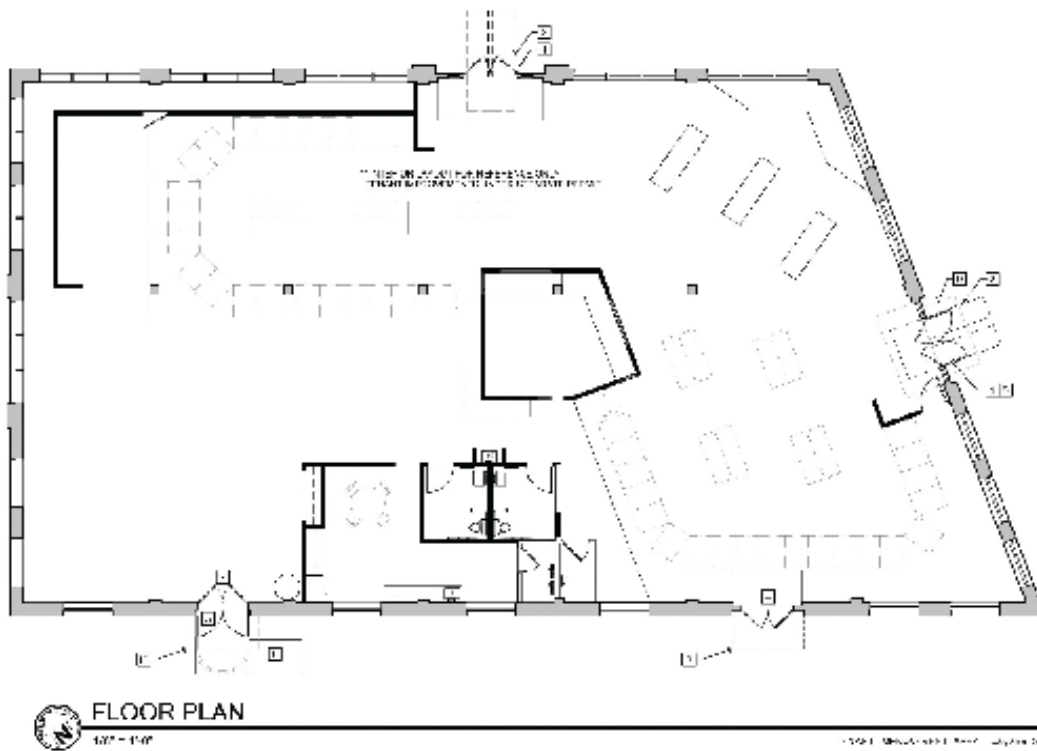
14100 SE 36TH STREET, STE 200  
BELLEVUE, WA 98006  
425-643-8400  
WWW.MPIHA.COM



# LIQUOR STORE BUILDING

16389 REDMOND WAY, REDMOND, WA

REDMOND RETAIL FOR LEASE



KEY NOTES	
1	EXIST. WALLS TO REMAIN UNLESS NOTED OTHERWISE
2	NEW WALLS TO BE CONCRETE BLOCK
3	NEW FLOORING TO BE 1/2" X 3/4" X 12' OAK PARQUET LAYED OVER EXISTING FLOORING
4	NEW CEILING TO BE 2' X 4' SUSPENDED GRID WITH 2' X 2' RECESSED CANOPY LIGHTS
5	NEW MECHANICAL SYSTEMS TO BE INSTALLED AS SHOWN ON THIS PLAN
6	NEW ELECTRICAL SYSTEMS TO BE INSTALLED AS SHOWN ON THIS PLAN
7	NEW PLUMBING SYSTEMS TO BE INSTALLED AS SHOWN ON THIS PLAN
8	NEW GLASS FRONT SERVICE COUNTER TO BE INSTALLED AS SHOWN ON THIS PLAN
9	NEW GLASS DISPLAY CASES TO BE INSTALLED AS SHOWN ON THIS PLAN
10	NEW GLASS WINE DISPLAY CASES TO BE INSTALLED AS SHOWN ON THIS PLAN
11	NEW GLASS BEVERAGE DISPLAY CASES TO BE INSTALLED AS SHOWN ON THIS PLAN
12	NEW GLASS WINE DISPLAY CASES TO BE INSTALLED AS SHOWN ON THIS PLAN
13	NEW GLASS BEVERAGE DISPLAY CASES TO BE INSTALLED AS SHOWN ON THIS PLAN
14	NEW GLASS WINE DISPLAY CASES TO BE INSTALLED AS SHOWN ON THIS PLAN
15	NEW GLASS BEVERAGE DISPLAY CASES TO BE INSTALLED AS SHOWN ON THIS PLAN
16	NEW GLASS WINE DISPLAY CASES TO BE INSTALLED AS SHOWN ON THIS PLAN
17	NEW GLASS BEVERAGE DISPLAY CASES TO BE INSTALLED AS SHOWN ON THIS PLAN
18	NEW GLASS WINE DISPLAY CASES TO BE INSTALLED AS SHOWN ON THIS PLAN
19	NEW GLASS BEVERAGE DISPLAY CASES TO BE INSTALLED AS SHOWN ON THIS PLAN
20	NEW GLASS WINE DISPLAY CASES TO BE INSTALLED AS SHOWN ON THIS PLAN
21	NEW GLASS BEVERAGE DISPLAY CASES TO BE INSTALLED AS SHOWN ON THIS PLAN
22	NEW GLASS WINE DISPLAY CASES TO BE INSTALLED AS SHOWN ON THIS PLAN
23	NEW GLASS BEVERAGE DISPLAY CASES TO BE INSTALLED AS SHOWN ON THIS PLAN
24	NEW GLASS WINE DISPLAY CASES TO BE INSTALLED AS SHOWN ON THIS PLAN
25	NEW GLASS BEVERAGE DISPLAY CASES TO BE INSTALLED AS SHOWN ON THIS PLAN
26	NEW GLASS WINE DISPLAY CASES TO BE INSTALLED AS SHOWN ON THIS PLAN
27	NEW GLASS BEVERAGE DISPLAY CASES TO BE INSTALLED AS SHOWN ON THIS PLAN
28	NEW GLASS WINE DISPLAY CASES TO BE INSTALLED AS SHOWN ON THIS PLAN
29	NEW GLASS BEVERAGE DISPLAY CASES TO BE INSTALLED AS SHOWN ON THIS PLAN
30	NEW GLASS WINE DISPLAY CASES TO BE INSTALLED AS SHOWN ON THIS PLAN
31	NEW GLASS BEVERAGE DISPLAY CASES TO BE INSTALLED AS SHOWN ON THIS PLAN
32	NEW GLASS WINE DISPLAY CASES TO BE INSTALLED AS SHOWN ON THIS PLAN
33	NEW GLASS BEVERAGE DISPLAY CASES TO BE INSTALLED AS SHOWN ON THIS PLAN
34	NEW GLASS WINE DISPLAY CASES TO BE INSTALLED AS SHOWN ON THIS PLAN
35	NEW GLASS BEVERAGE DISPLAY CASES TO BE INSTALLED AS SHOWN ON THIS PLAN
36	NEW GLASS WINE DISPLAY CASES TO BE INSTALLED AS SHOWN ON THIS PLAN
37	NEW GLASS BEVERAGE DISPLAY CASES TO BE INSTALLED AS SHOWN ON THIS PLAN
38	NEW GLASS WINE DISPLAY CASES TO BE INSTALLED AS SHOWN ON THIS PLAN
39	NEW GLASS BEVERAGE DISPLAY CASES TO BE INSTALLED AS SHOWN ON THIS PLAN
40	NEW GLASS WINE DISPLAY CASES TO BE INSTALLED AS SHOWN ON THIS PLAN
41	NEW GLASS BEVERAGE DISPLAY CASES TO BE INSTALLED AS SHOWN ON THIS PLAN
42	NEW GLASS WINE DISPLAY CASES TO BE INSTALLED AS SHOWN ON THIS PLAN
43	NEW GLASS BEVERAGE DISPLAY CASES TO BE INSTALLED AS SHOWN ON THIS PLAN
44	NEW GLASS WINE DISPLAY CASES TO BE INSTALLED AS SHOWN ON THIS PLAN
45	NEW GLASS BEVERAGE DISPLAY CASES TO BE INSTALLED AS SHOWN ON THIS PLAN
46	NEW GLASS WINE DISPLAY CASES TO BE INSTALLED AS SHOWN ON THIS PLAN
47	NEW GLASS BEVERAGE DISPLAY CASES TO BE INSTALLED AS SHOWN ON THIS PLAN
48	NEW GLASS WINE DISPLAY CASES TO BE INSTALLED AS SHOWN ON THIS PLAN
49	NEW GLASS BEVERAGE DISPLAY CASES TO BE INSTALLED AS SHOWN ON THIS PLAN
50	NEW GLASS WINE DISPLAY CASES TO BE INSTALLED AS SHOWN ON THIS PLAN

Initial Design Review Board and Historical Board Presentation  
16389 Redmond Way, Redmond, WA  
16389 Redmond Way, Redmond, WA  
16389 Redmond Way, Redmond, WA  
16389 Redmond Way, Redmond, WA

**FLOOR PLAN**

Magellan Architects  
8000 150th Avenue, Suite 200  
Bellevue, WA 98006  
Phone: 425-455-4300  
Fax: 425-455-4300  
email: info@magellanarchitects.com

**5**



## FOR MORE INFORMATION CONTACT

**MICHAEL AZOSE**  
Direct: 425-974-4236  
Cell: 206-856-7576  
mazose@mpiha.com

**MORRIS PIHA REAL ESTATE SERVICES**  
14100 SE 36TH STREET, STE 200  
BELLEVUE, WA 98006  
425-643-8400  
[WWW.MPIHA.COM](http://WWW.MPIHA.COM)

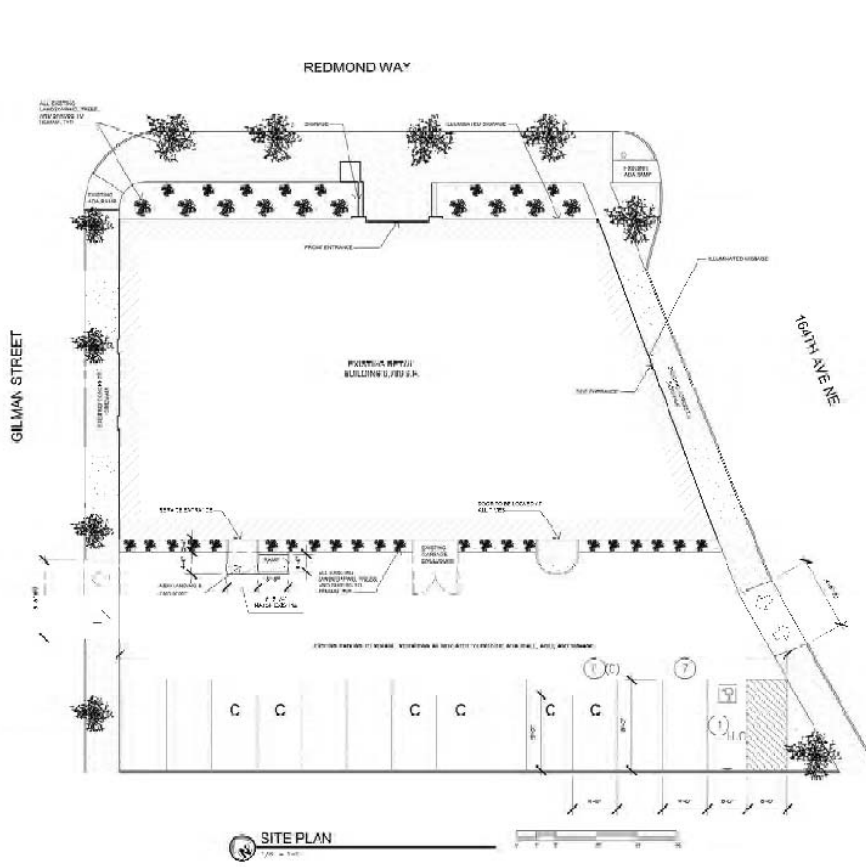


The information contained herein, while not guaranteed, has been secured from sources Morris Piha Real Estates Services believes to be reliable and is considered the most current and correct data available. Prospective purchaser (or lessee) should verify all such information on their own behalf or have information verified by their attorney, accountant or business advisor.

# LIQUOR STORE BUILDING

16389 REDMOND WAY, REDMOND, WA

REDMOND RETAIL FOR LEASE



SITE DATA	
LOCAL JURISDICTION	REDMOND CITY, WA (UNINCORPORATED BY ORDINANCE 17, 1971)
PROJECT NUMBER	1000000001
DATE/REVISION	08/11/08 (REVISED)
SECTION/TOWN/UNINCORPORATED	REDMOND 1000000001
PROPERTY NAME	QUONIA STORE
OWNER	16389 REDMOND WAY
OCCUPANCY	LIQUOR STORE
NEAR REAL ESTATE/STATUS ON SITE	16389 REDMOND WAY (16389)
PROPERTY GROUP CLASSIFICATION	COMMERCIAL
ADJACENT USES/STATUS	LIQUOR STORE
AREA CALC. AND CONDITIONS	TOTAL AREA: 10,000 SQ. FT. (100' x 100')
EXISTING FLOOR AREA	10,000 SQ. FT.
PROPOSED FLOOR AREA	10,000 SQ. FT.
PROPOSED IMPROVEMENTS	14 GRADES (ONE CHANGE)

SITE LEGEND	
[Symbol]	EXISTING IMPROVEMENTS
[Symbol]	PROPOSED IMPROVEMENTS
[Symbol]	EXISTING CONCRETE DRIVEWAY
[Symbol]	EXISTING DRIVEWAY (UNINCORPORATED)
[Symbol]	EXISTING DRIVEWAY (INCORPORATED)
[Symbol]	EXISTING DRIVEWAY (UNINCORPORATED)
[Symbol]	EXISTING DRIVEWAY (INCORPORATED)

**Initial Design Review Board and Historical Board Presentation:**  
 16389 Redmond Way  
 Redmond, WA 98051  
 509-425-1111

**Magellan Architects**  
 3031 1st Avenue, Suite 200  
 Bellevue, WA 98004  
 Phone: 425-455-4900  
 Email: info@magellanarchitects.com

**SITE PLAN**  
**4**

11/03/08

**Magellan**

## FOR MORE INFORMATION CONTACT

### MICHAEL AZOSE

Direct: 425-974-4236  
 Cell: 206-856-7576  
 mazose@mpiha.com

### MORRIS PIHA REAL ESTATE SERVICES

14100 SE 36TH STREET, STE 200  
 BELLEVUE, WA 98006  
 425-643-8400  
 WWW.MPIHA.COM



The information contained herein, while not guaranteed, has been secured from sources Morris Piha Real Estate Services believes to be reliable and is considered the most current and correct data available. Prospective purchaser (or lessee) should verify all such information on their own behalf or have information verified by their attorney, accountant or business advisor.