



SAMARITAN HEALTHCARE NEW HOSPITAL

LOWE'S

Denny's

PRELIX SCHWAB

Wendy's

Free Reg

TOAST COAST

SITE

Northwest

NISSAN

Yonezawa Blvd

Hampton Express

FAIRFIELD INN & SUITES Marriott

COMFORT SUITES

TALCO

S. Maier's Rd

Arby's

BURGER KING

GREYHOUND

Rob's

Shari's

Kittleson Rd

Starbucks

Kittleson Rd

115,550 ADT

Kittleson Rd NE

Ramm Rd NE

BW | Best Western

90

MainStay Suites

McDonald's

17

Carls Jr.

Inn at Moses Lake

RAMADA WORLDWIDE BY WYNDHAM

16,294 ADT

90

FOR LEASE
1571 Yonezawa Boulevard
Moses Lake, WA 98837



MOSES LAKE RETAIL DEVELOPMENT

Adam Greenberg | Connor McMahon

First Western Properties, Inc. | 425.822.5522 | fwp-inc.com
11621 97th Lane NE, Kirkland, Washington 98034

1571 YONEZAWA BOULEVARD:



MOSES LAKE RETAIL consists of a 5,242 SF commercial building which is part of a larger development anchored by Lowe's Home Improvement. The building is currently demised into three retail spaces - contact agents for additional options. Adjacent tenants include Sherwin Williams, Les Schwab, and Denny's. The location benefits from its access to I-90, numerous hotels, and the new Samaritan Hospital. Hospital breaking ground June 2020.

AVAILABLE: 1,600-5242 SF

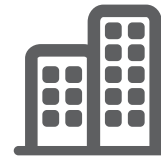
CALL FOR RATES



Population



Average HH Income



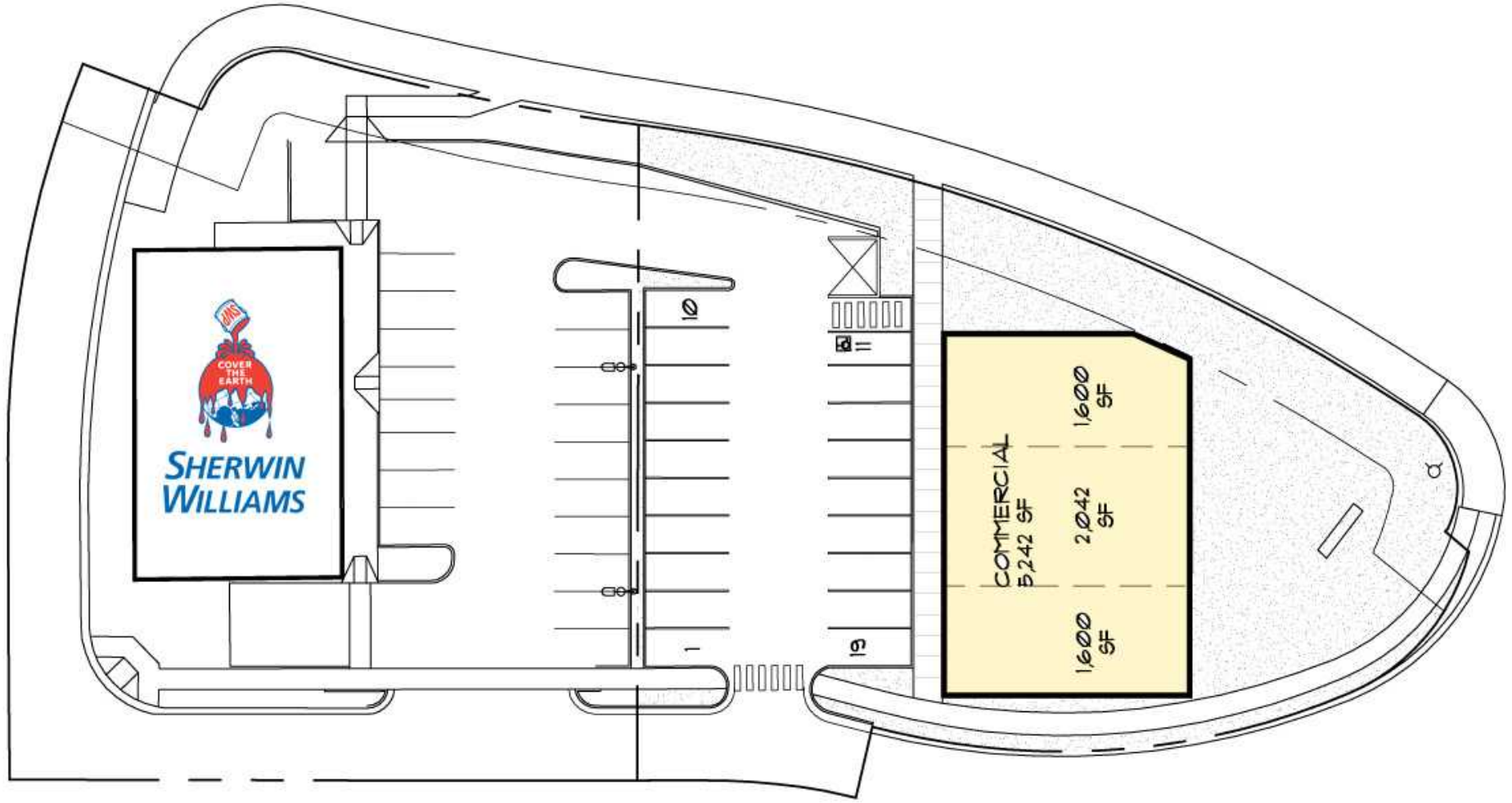
Daytime Population

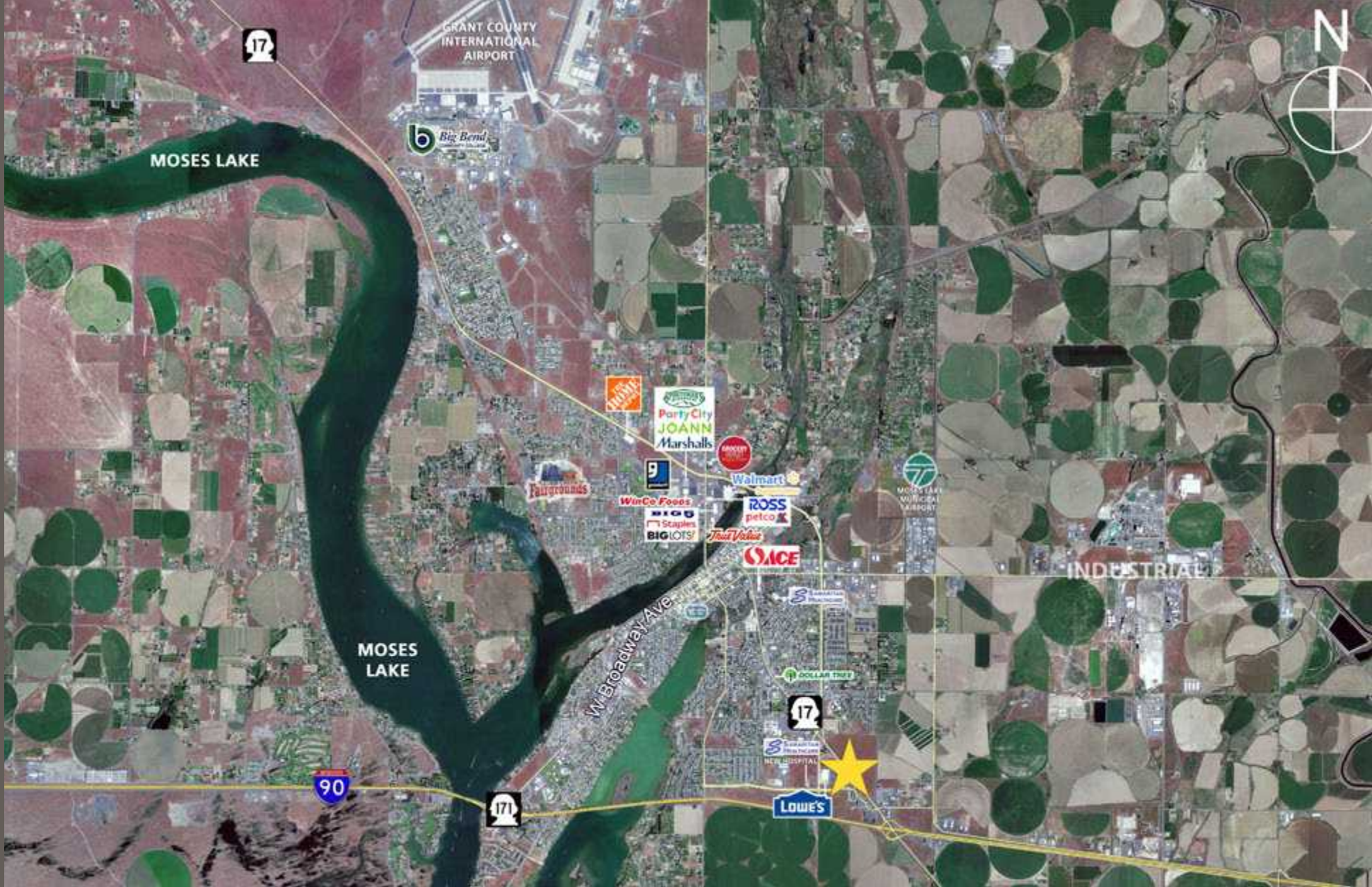
Regis - 2020

	Population	Average HH Income	Daytime Population
Mile 1	2,248	\$89,228	2,439
Mile 3	20,356	\$74,327	12,210
Mile 5	34,874	\$76,062	13,874



SITE PLAN





Located Moments from
Interstate 90



1 of 10 Fastest Growing
Micropolitan Areas in Nation



15,550 ADT
SR 17



16,185ADT
Interstate 90



MOSES LAKE, WA is the largest city in Grant County, WA. Located along Interstate 90, Moses Lake is 177 miles from Seattle and 104 miles from Spokane, Washington States most populous cities. With one of the lowest electric rates in the world and fastest internet speeds in the Nation, several high tech data centers including Microsoft and Dell are located here. Food manufacturing and flight testing round out a few reasons why living in Moses Lake marries rural lifestyle and world class economy.

KIRKLAND | TACOMA | PORTLAND | SEATTLE



RETAIL FOCUSED. RESULTS DRIVEN.

ADAM GREENBERG

425.250.3282
adam@fwp-inc.com

CONNOR MCMAHON

425.250.3290
connor@fwp-inc.com



First Western Properties, Inc. | 425.822.5522
11621 97th Lane NE Kirkland, WA 98034 | fwp-inc.com

© First Western Properties, Inc. DISCLAIMER: The above information has been secured from sources believed to be reliable, however, no representations are made to its accuracy. Prospective tenants or buyers should consult their professional advisors and conduct their own independent investigation. Properties are subject to change in price and/or availability without notice.