



559 College Ave

PALO ALTO, CA

FOR LEASE



±1,000 SF of Retail
Close Proximity to
Stanford

OPEN space with high ceilings

IN-SUITE restrooms

ON-SITE parking

AVAILABLE now

LEASE RATE \$4.00 PSF, Gross (Tenant pays utilities)

CALL broker to tour; do not disturb tenants

KRISTOPHER BLAIS
408.588.2382
kristopher.blais@kidder.com
LIC N° 01893561

**Kidder
Mathews**

This information supplied herein is from sources we deem reliable. It is provided without any representation, warranty, or guarantee, expressed or implied as to its accuracy. Prospective Buyer or Tenant should conduct an independent investigation and verification of all matters deemed to be material, including, but not limited to, statements of income and expenses. Consult your attorney, accountant, or other professional advisor.

KIDDER.COM

FOR LEASE

559 College Ave

PALO ALTO, CA



Located within walking distance to California Ave amenities

FOUR MINUTE walk to restaurants, cafes, and shops
TEN MINUTE walk to Caltrain California Ave Station

DEMOGRAPHICS

2019	1 Mile	3 Miles	5 Miles
Population	27,282	144,716	290,393
Median HH Income	\$86,074	\$133,894	\$130,823
Avg HH Income	\$129,325	\$164,285	\$163,272

KRISTOPHER BLAIS
 408.588.2382
kristopher.blais@kidder.com
 LIC N° 01893561

KIDDER.COM

This information supplied herein is from sources we deem reliable. It is provided without any representation, warranty, or guarantee, expressed or implied as to its accuracy. Prospective Buyer or Tenant should conduct an independent investigation and verification of all matters deemed to be material, including, but not limited to, statements of income and expenses. Consult your attorney, accountant, or other professional advisor.

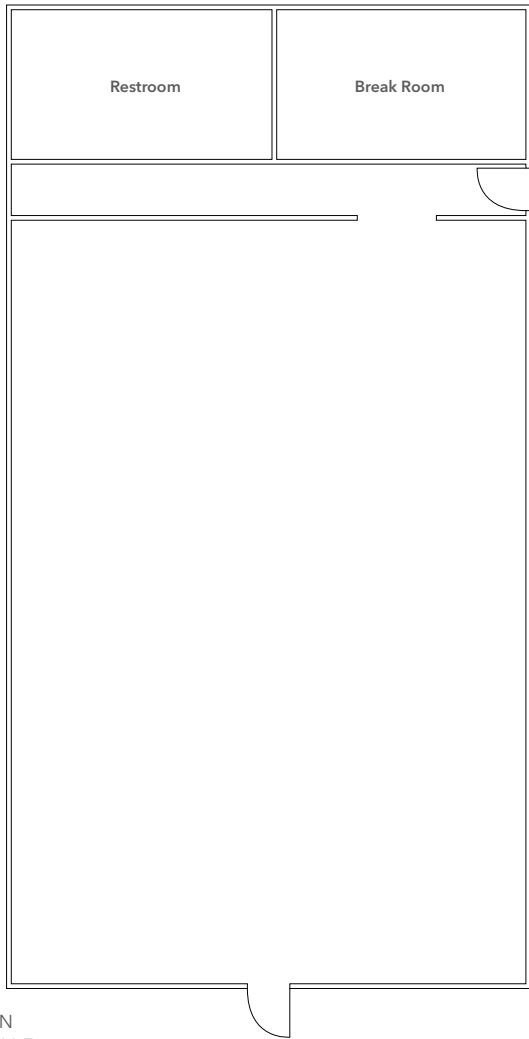


FOR LEASE

559 College Ave

PALO ALTO, CA

Floor Plan



FLOOR PLAN
NOT TO SCALE



±1,000
SQUARE FEET

KRISTOPHER BLAIS
408.588.2382
kristopher.blais@kidder.com
LIC N° 01893561

KIDDER.COM

This information supplied herein is from sources we deem reliable. It is provided without any representation, warranty, or guarantee, expressed or implied as to its accuracy. Prospective Buyer or Tenant should conduct an independent investigation and verification of all matters deemed to be material, including, but not limited to, statements of income and expenses. Consult your attorney, accountant, or other professional advisor.



FOR LEASE

559 College Ave

PALO ALTO, CA

DEMOGRAPHICS (2019)

Population	1 Mile	3 Miles	5 Miles
Projected Population (2024)	28,755	149,294	299,256
Estimated Population (2019)	27,282	144,716	290,393
Census Population (2010)	21,467	130,564	262,742
Population Growth (2019 - 2024)	5.40%	3.16%	3.05%
Population Growth (2010 - 2019)	27.09%	10.84%	10.52%
Households			
Projected Households (2024)	10,844	56,889	110,739
Estimated Households (2019)	10,325	55,214	107,519
Census Households (2010)	8,345	50,226	97,767
Households Growth (2019 - 2024)	5.03%	3.03%	2.99%
Households Growth (2010 - 2019)	23.73%	9.93%	9.97%
Average Household Income	\$129,325	\$164,285	\$163,272
Median Home Value	\$86,074	\$133,894	\$130,823

DATA FOR ALL BUSINESSES IN AREA (2019)

Daytime Employment	1 Mile	3 Miles	5 Miles
Total Businesses	1,321	11,999	17,720
Total Employees	18,092	117,975	182,725
Employee/Business Population Ratio	14	10	10

KIDDER.COM

This information supplied herein is from sources we deem reliable. It is provided without any representation, warranty, or guarantee, expressed or implied as to its accuracy. Prospective Buyer or Tenant should conduct an independent investigation and verification of all matters deemed to be material, including, but not limited to, statements of income and expenses. Consult your attorney, accountant, or other professional advisor.

KRISTOPHER BLAIS
408.588.2382
kristopher.blais@kidder.com
LIC N° 01893561

