

For Lease

Park 280 - Building C



4718 B Street NW
Auburn, WA



Available now

17,062 SF total

2,225 SF office

22' clear height

6 dock-high / 3 grade-level

Divisible down to 4,500 SF with dock and grade

\$0.60 shell / \$0.80 office add-on

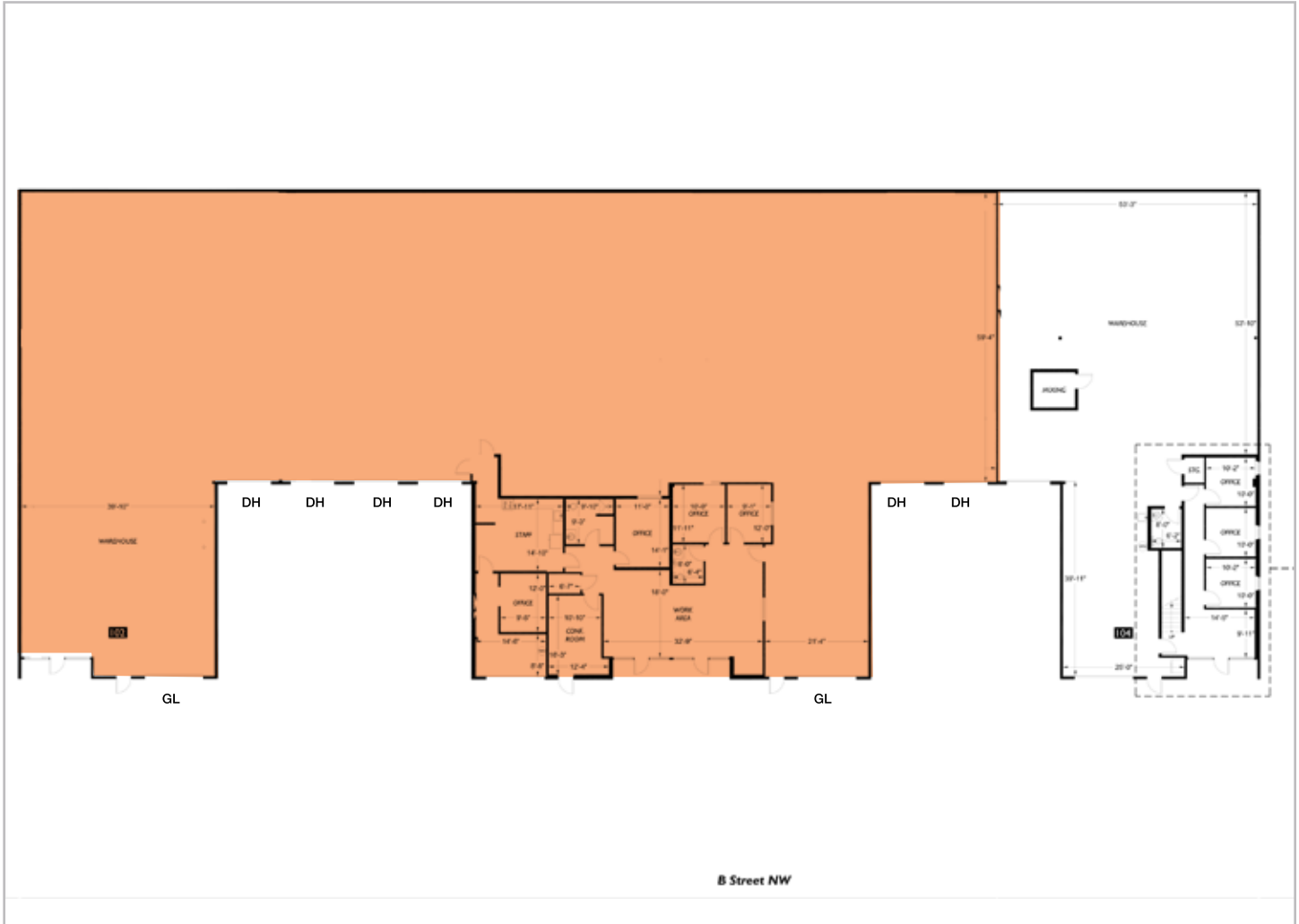
\$0.28 NNN

Mike Newton

206.248.7311

mnewton@kiddermathews.com

Park 280



Contact

Mike Newton
206.248.7311
mnewton@kiddermathews.com