

2427 E. JUDD ROAD
BURTON, MICHIGAN

INDUSTRIAL FOR SALE
13,020 Square Feet Available

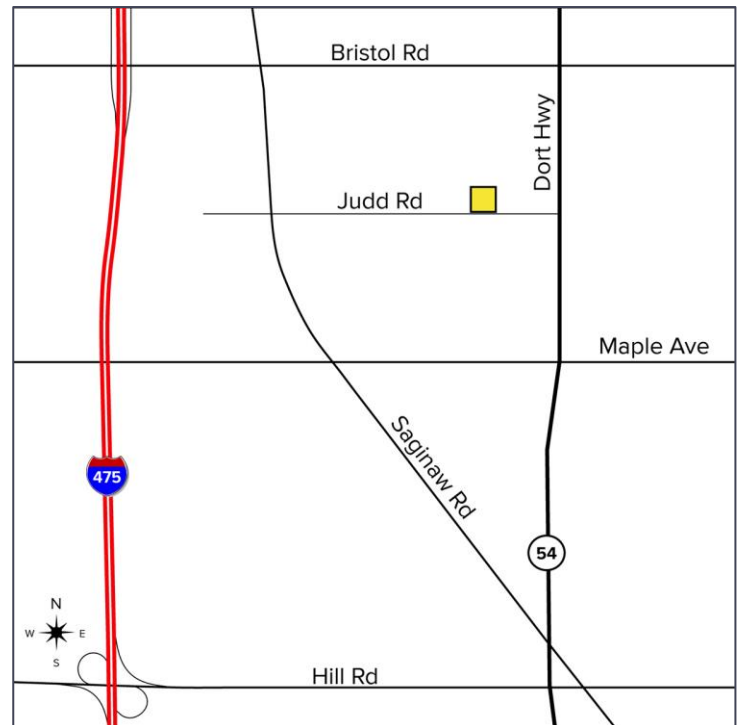


**SIGNATURE
ASSOCIATES**
KNOW SIGNATURE | KNOW RESULTS



PROPERTY FEATURES

- 13,020 square feet available
- 1,680 square feet of office
- 9' - 14' clear height
- (2) 12x14 grade level doors
- Zoned M-1
- Ample parking spaces
- Fenced Lot
- Sale Price: \$625,000 (\$48.00/sq.ft.)



For more information, please contact:

CHRIS MONSOUR

(248) 948 0107

cmonsour@signatureassociates.com

JOE STACK

(248) 359 0615

jstack@signatureassociates.com

SIGNATURE ASSOCIATES

One Towne Square, Suite 1200

Southfield, MI 48076

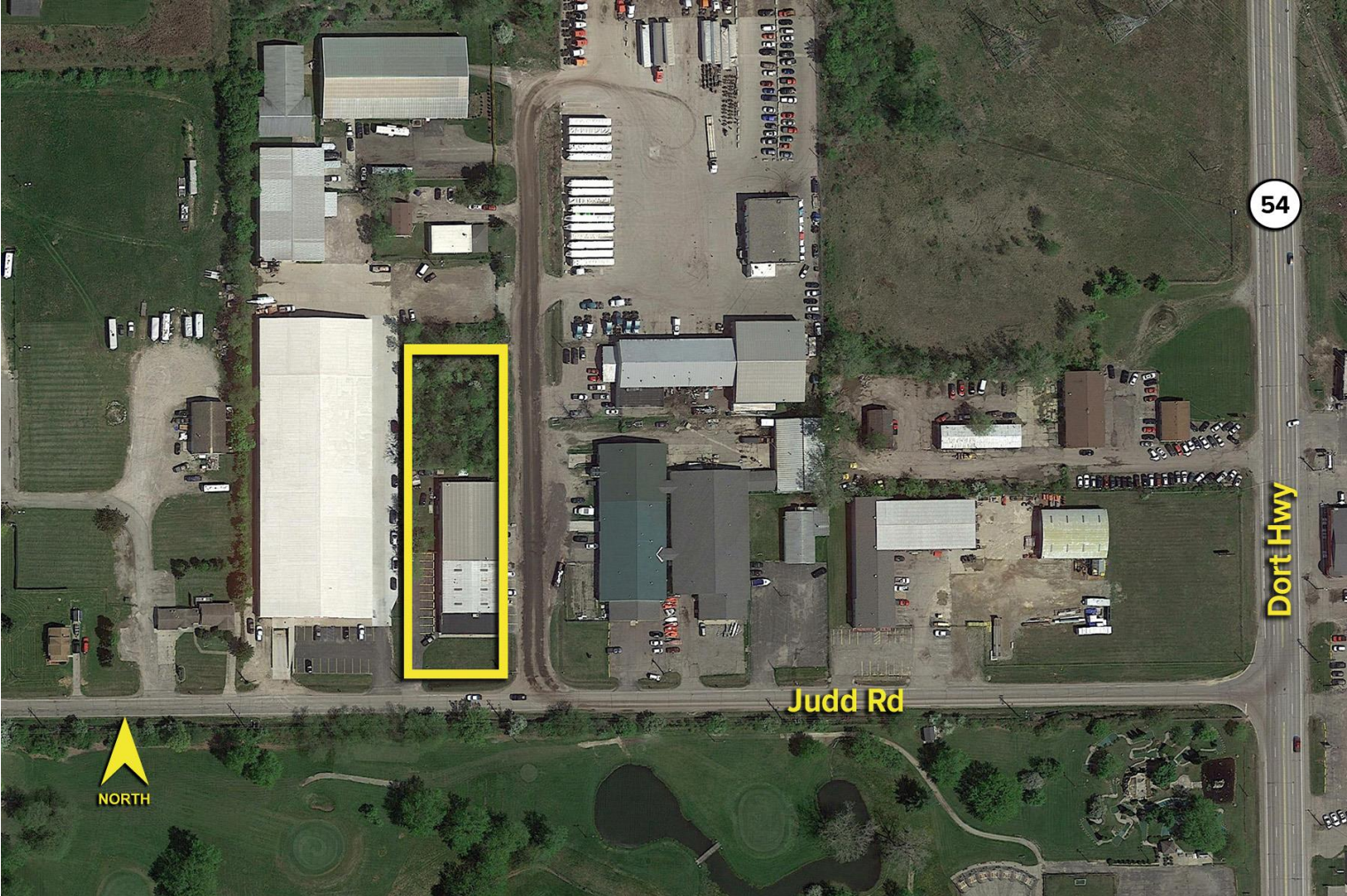
www.signatureassociates.com

2427 E. Judd Road – Burton, Michigan

Industrial For Sale

13,020
Square Feet
AVAILABLE

Aerial



For more information, please contact:

CHRIS MONSOUR
(248) 948 0107
cmonsour@signatureassociates.com

JOE STACK
(248) 359 0615
jstack@signatureassociates.com

SIGNATURE ASSOCIATES
One Towne Square, Suite 1200
Southfield, MI 48076
www.signatureassociates.com

Information is subject to verification and no liability for errors or omissions is assumed. Price is subject to change and listing withdrawal.