

# PINEWOODS OFFICE CENTER

## 450-510 NE M-291

LEE'S SUMMIT, MISSOURI 64086



OFFICE FOR LEASE 1,177 & 2,532± SF AVAILABLE



ZONING	Office
SIZE	1,177 & 2,532± SF
LEASE TYPE	NNN

### BUILDING FEATURES

- High traffic counts along M-291 of 26,735 and Langsford Road at 21,015
- Conveniently located on M-291, between I-470 & 350 Highways
- 78,407 people live within a 5-mile radius
- \$88,124 average household income within a 5-mile radius

### DEMOGRAPHICS

	1 Mile	3 Mile	5 Mile
Population	13,526	50,972	78,407
Household Income	\$66,646	\$78,308	\$88,124

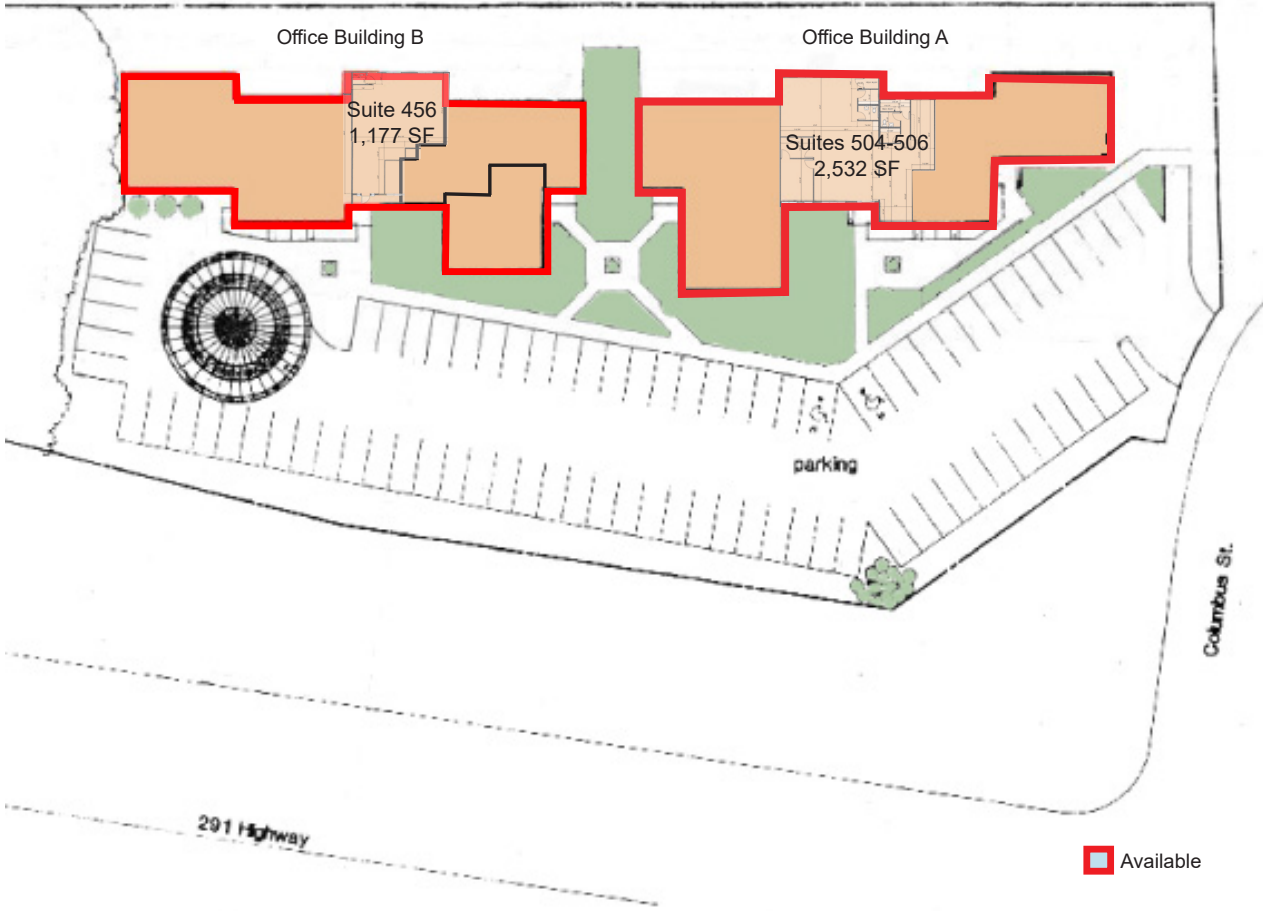
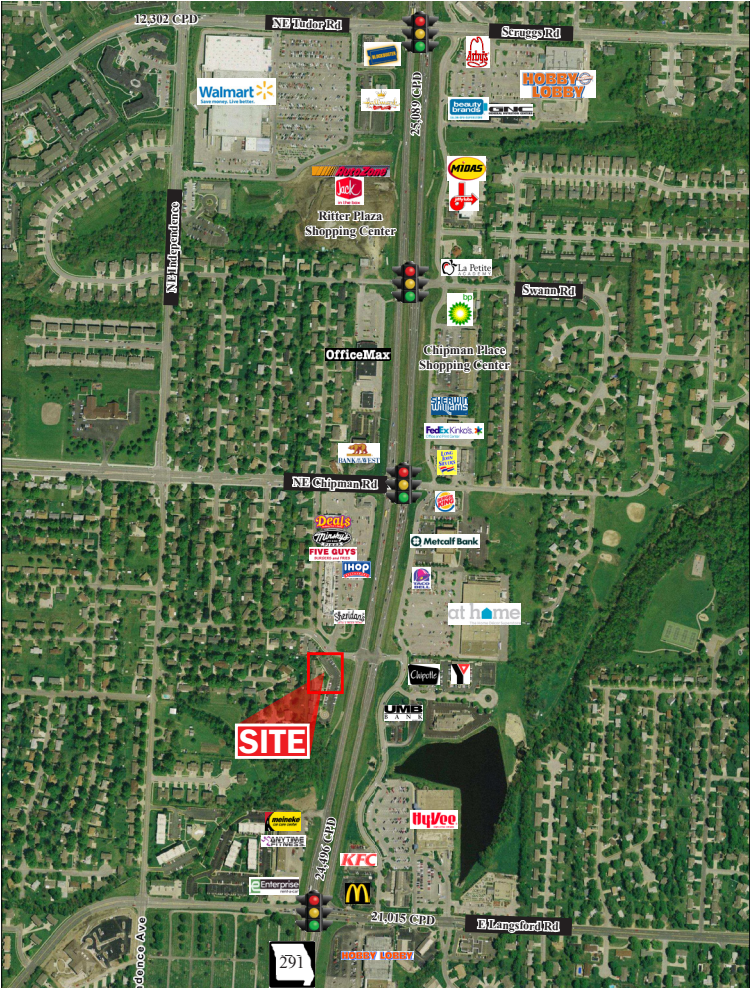
FOR MORE INFORMATION, PLEASE CONTACT:

**JOHN EVANS**  
Retail Brokerage  
816.350.3004  
[johnsevans@sbcglobal.net](mailto:johnsevans@sbcglobal.net)

**KESSINGER/HUNTER & COMPANY, LC**  
2600 Grand Boulevard, Suite 700  
Kansas City, MO 64108  
(816) 842-2690  
[www.kessingerhunter.com](http://www.kessingerhunter.com)

450-510 NE M-291, LEE'S SUMMIT, MISSOURI 64086

Office for Lease



FOR MORE INFORMATION, PLEASE CONTACT:

**JOHN EVANS**  
Retail Brokerage  
816.350.3004  
[johnsevans@sbcglobal.net](mailto:johnsevans@sbcglobal.net)

**KESSINGER/HUNTER & COMPANY, LC**  
2600 Grand Boulevard, Suite 700  
Kansas City, MO 64108  
(816) 842-2690  
[www.kessingerhunter.com](http://www.kessingerhunter.com)

Information subject to verification and no liability for errors or omissions is assumed. Price subject to change. To unsubscribe, please click on the link: [khlistings@kessingerhunter.com](mailto:khlistings@kessingerhunter.com)