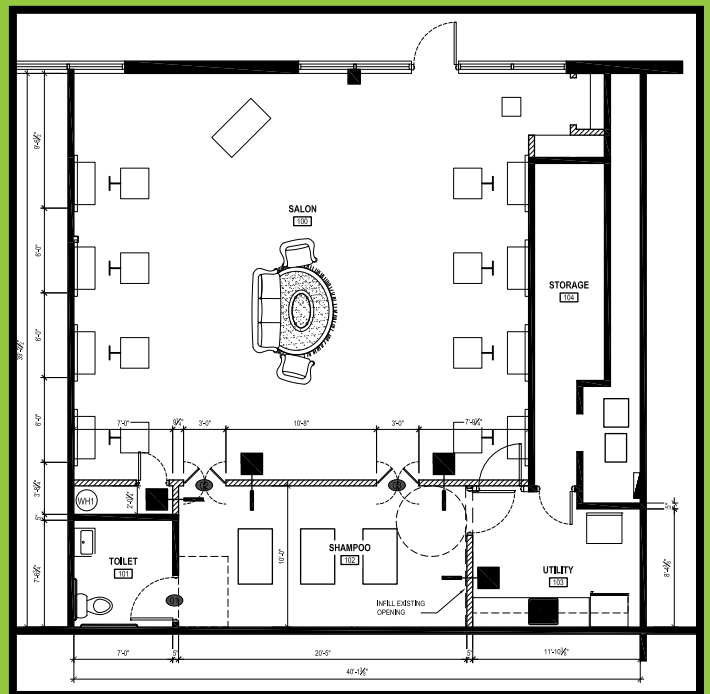
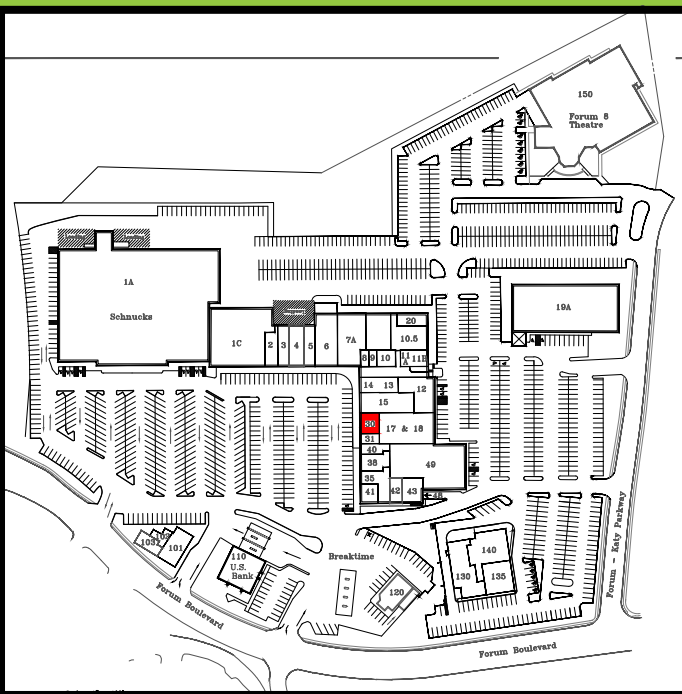


FORUM SHOPPING CENTER SUITE 30



LP FOR LEASE |

LINDNER PROPERTIES

Forum Shopping Center
Suite 30
1400 Forum Blvd
Columbia, MO 65203

SUMMARY

- 225,000 square feet
- Stadium Boulevard
29,000 vehicles per day
- Forum Boulevard
25,000 vehicles per day
- Highly affluent section of Columbia
- 3-minute drive from downtown and the University of Missouri
- Excellent cotenants including Schnucks Supermarket, Forum 8 Theaters, Dickey's BBQ, Subway, Tuesday Morning, and others

	1-Mile	3-Miles	5-Miles
Population	6,389	76,325	118,078
Average HH Income	\$98,061	\$72,399	\$74,896
Employment	2,300	87,360	114,771
Total Daytime Population	5,768	115,695	163,143

SUITE SUMMARY

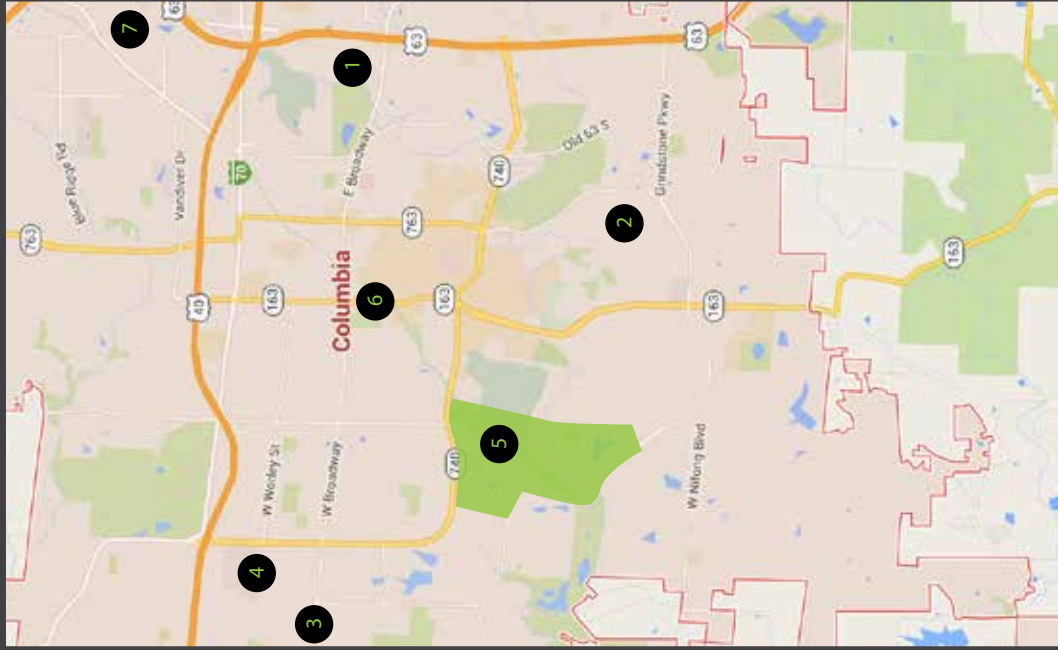
- 1,600 square feet
- Storefront faces Stadium Blvd.
- Space urrently set up as a high end hair salon
- Neighboring tenants include Chris McD's Restaurant, Treats Unleashed, and Eyes on Missouri

The above information is deemed to be accurate however it is subject to errors, omissions and change at any time.

For leasing information, contact
JAY LINDNER
jay@lindnerproperty.com
(573) 446-5500



CENTRAL COLUMBIA TRADE AREA



Area Snapshot FORUM & STADIUM > COLUMBIA, MO

- Anchor Retailers
- Schnucks
 - Goodrich 8 Theater
 - Tuesday Morning

Forum & Stadium > Demographic Report

	1-Mile Radius	3-Mile Radius	5-Mile Radius
Population	6,151	76,417	118,114
Households	2,850	31,953	49,423
Household Income	\$98,957	\$74,355	\$75,588
Total Daytime Population	5,768	115,695	163,143

Forum & Stadium > Major Employers

	# of Employees
University of Missouri Hospital	2,700
Veterans United Home Loans	1,817
Harry S. Truman Veterans Administration Hospital	1,602

CENTRAL COLUMBIA TRADE AREA

