

# LAKE CANE PLACE

6645 Vineland Road

Orlando, FL 32819

FOR LEASE

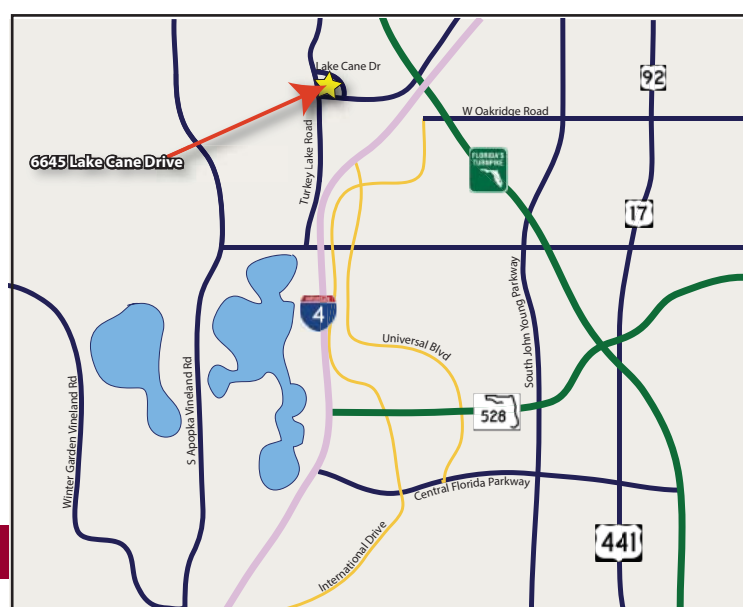


## FEATURES:

- ◆ Unit 210: 1,200 SF
- ◆ Great visibility and ease of access
- ◆ Located directly adjacent to Universal Studios
- ◆ Direct parking lot access
- ◆ Offers close proximity to some of the most prestigious neighborhoods in Orlando

## FINANCIAL INFORMATION:

- ◆ Rate: \$17.50 net of electric & janitorial



4700 Millenia Blvd  
Suite 200  
Orlando, FL 32839  
ph: 321.281.8500 fx: 321.281.8519  
www.lee-associates.com

LOCAL EXPERTISE. NATIONAL REACH. WORLD CLASS

All information furnished regarding property for sale, rental or financing is from sources deemed reliable, but no warranty or representation is made to the accuracy thereof and the same is submitted to errors, omissions, change of price, rental or other conditions prior to sale, lease or financing or withdrawal without notice. No liability of any kind is to be imposed on the broker herein.

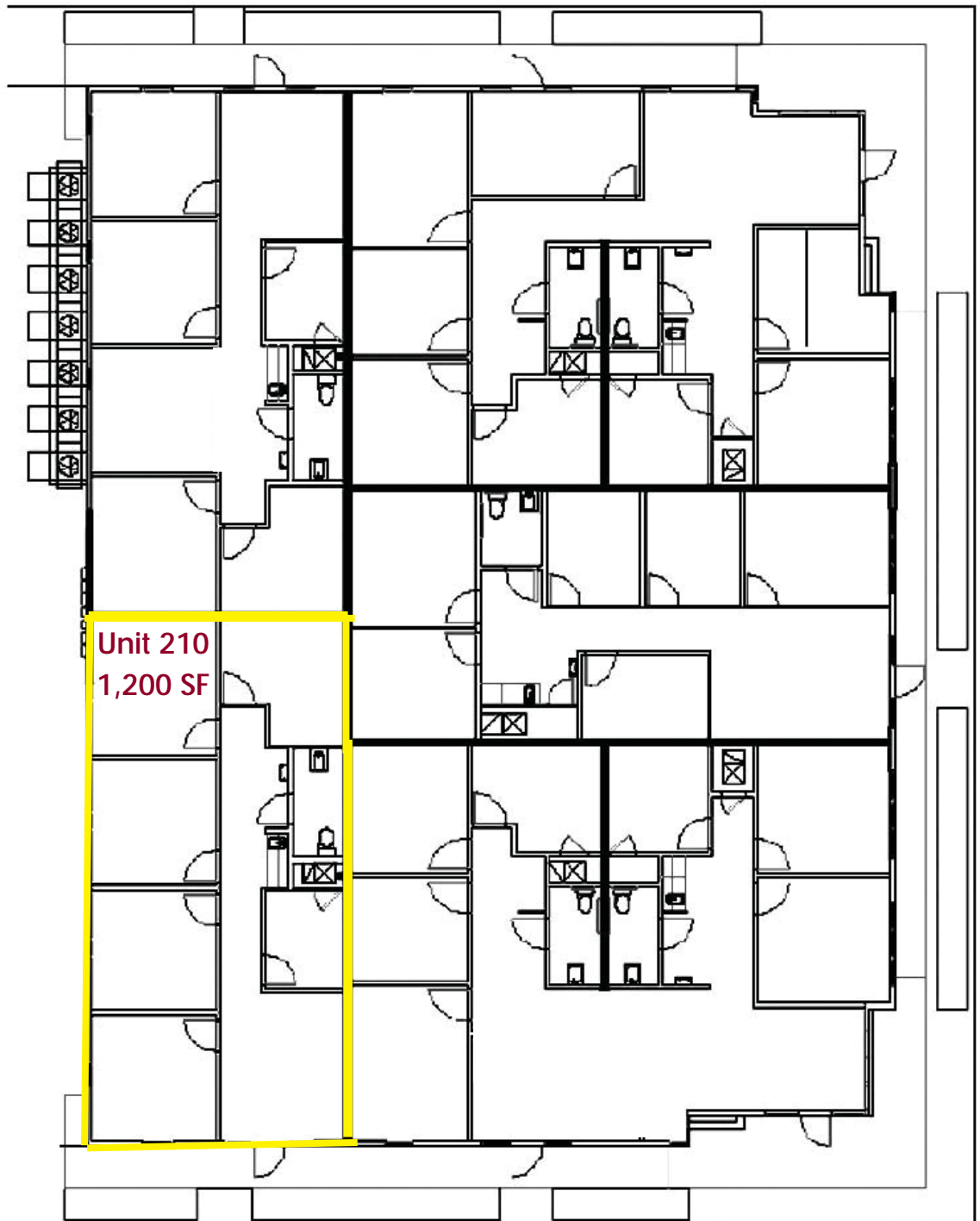
**Jason Bantel, CCIM**  
321.281.8509  
jbantel@lee-associates.com

# Lake Cane Place

6645 Vineland Road

Orlando, FL 32819

- Unit 210  
1,200 SF



Unit 210  
1,200 SF



4700 Millenia Blvd  
Suite 200  
Orlando, FL 32839  
ph: 321.281.8500 fx: 321.281.8519  
www.lee-associates.com

LOCAL EXPERTISE. NATIONAL REACH. WORLD CLASS

All information furnished regarding property for sale, rental or financing is from sources deemed reliable, but no warranty or representation is made to the accuracy thereof and the same is submitted to errors, omissions, change of price, rental or other conditions prior to sale, lease or financing or withdrawal without notice. No liability of any kind is to be imposed on the broker herein.

Jason Bantel, CCIM

321.281.8509

[jbantel@lee-associates.com](mailto:jbantel@lee-associates.com)