

FOR SUBLEASE

1120 Silverado Street, Suite 202

La Jolla, CA 92037



CAPITAL GROWTH
PROPERTIES, INC.



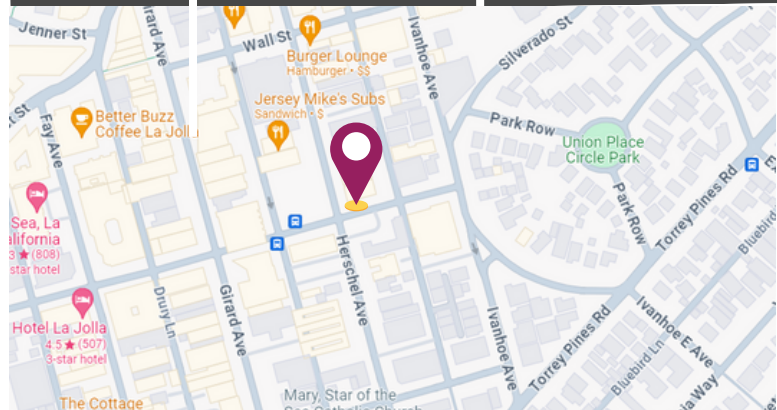
**LA JOLLA
OFFICE SPACE**

PROPERTY HIGHLIGHTS

- Private Office
- Common Restrooms
- Located in the heart of the village of La Jolla
- Sublease Expiration 11/30/25

AVAILABLE SPACE

SUITE	SF	RATE
202	218	\$695.00/MO + WST + electric



www.cgpincre.com

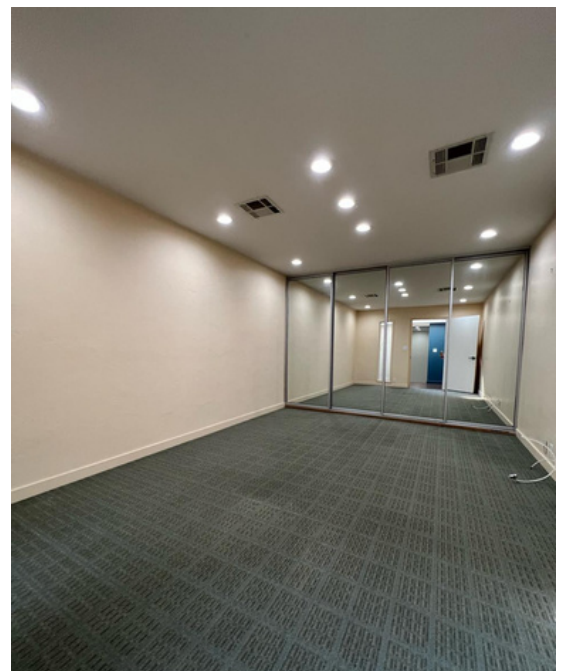
FOR SUBLEASE

1120 Silverado Street, Suite 202

La Jolla, CA 92037



CAPITAL GROWTH
PROPERTIES, INC.



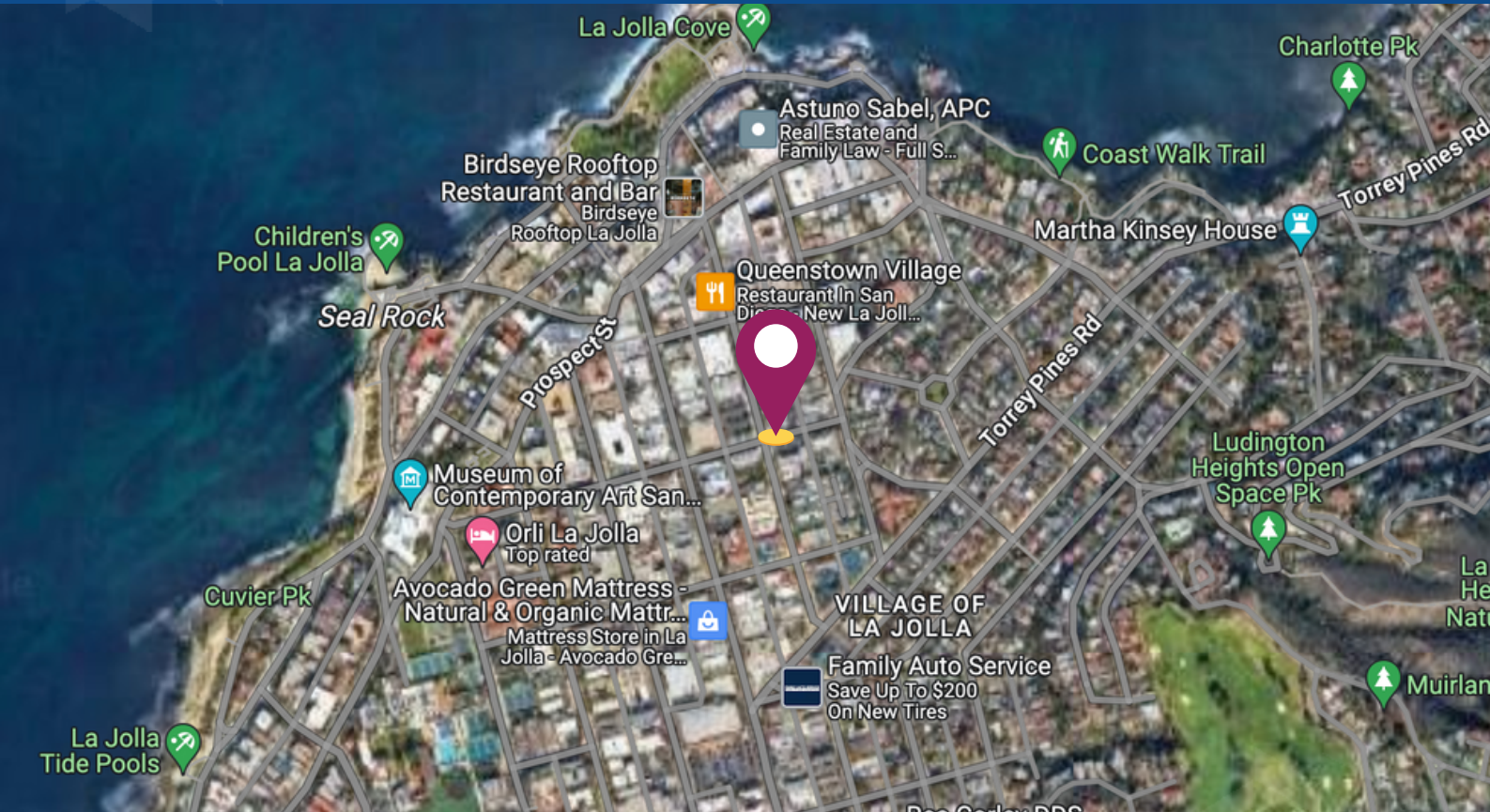
FOR SUBLEASE

1120 Silverado Street, Suite 202

La Jolla, CA 92037



CAPITAL GROWTH
PROPERTIES, INC.



This beautiful office space
could be subleased to you today!



TODD LAW

Senior Vice President

tlaw@cgpinc.com

858.729.9305

Cal BRE Lic. 01309241

WA BRE Lic. 27587

Capital Growth Properties, Inc.



1120 Silverado Street, Suite 200

La Jolla, CA 92037



858.729.9300



www.cgpinc.com



[@cgpinc](https://www.instagram.com/cgpinc)

www.cgpinc.com