

# TREMLEY POINT SOUTH



**±132,685 SF NEW CONSTRUCTION FOR LEASE**

4050 TREMLEY POINT ROAD | LINDEN, NEW JERSEY



[WWW.TREMLEYPOINTSOUTH.COM](http://WWW.TREMLEYPOINTSOUTH.COM)

# ±132,685 SF NEW CONSTRUCTION FOR LEASE

## TREMLEY POINT SOUTH



4050 TREMLEY POINT ROAD | LINDEN, NEW JERSEY

<b>TOTAL BUILDING:</b>	±132,685 SF
<b>BUILDING DIMENSIONS:</b>	594' x 240'
<b>OFFICE:</b>	±3,062 SF
<b>CEILING HEIGHT:</b>	36'
<b>COLUMN SPACING:</b>	54' x 60'
<b>DOCK DOORS:</b>	21 (9' x 10') (expandable to 27)

<b>DRIVE-IN DOORS:</b>	2 (12' x 14')
<b>CAR PARKING:</b>	94 (expandable)
<b>TRAILER PARKING:</b>	14 (expandable up to ±22)
<b>SPRINKLERS:</b>	ESFR
<b>POWER:</b>	1,000 amps, 480/277 volts, 3 phase



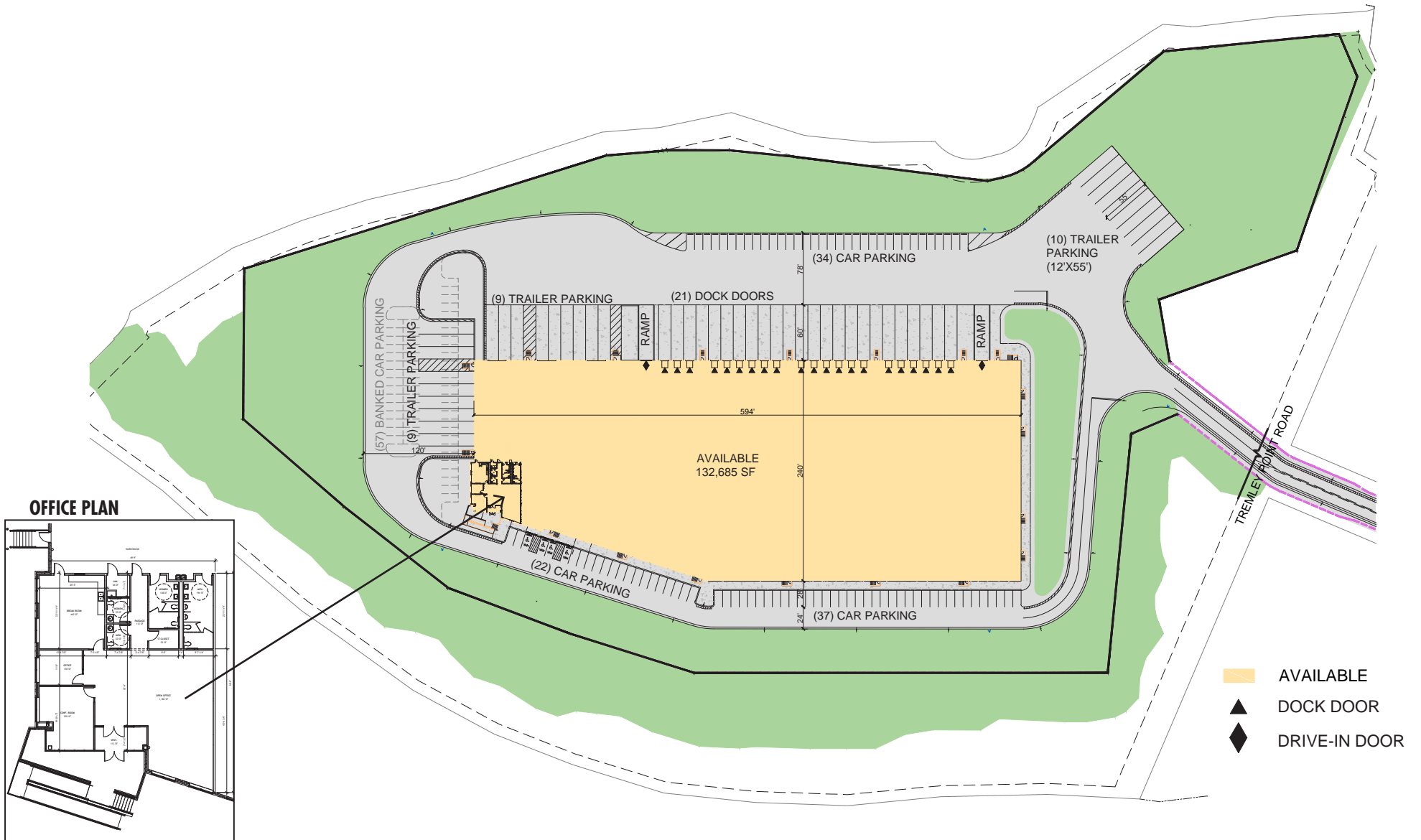


±132,685 SF NEW CONSTRUCTION FOR LEASE

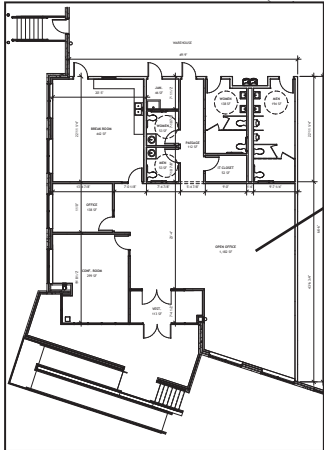
# TREMLEY POINT SOUTH



4050 TREMLEY POINT ROAD | LINDEN, NEW JERSEY



OFFICE PLAN





# ±132,685 SF NEW CONSTRUCTION FOR LEASE

## TREMLEY POINT SOUTH



4050 TREMLEY POINT ROAD | LINDEN, NEW JERSEY





# TREMLEY POINT SOUTH

*For further information on this property or to arrange an inspection, contact:*

**LARRY SCHIFFENHAUS**

Senior Vice President  
+1 201 712 5809  
larry.schiffenhaus@cbre.com

**THOMAS F. MONAHAN**

Vice Chairman  
+1 201 712 5610  
thomas.monahan@cbre.com

**STEPHEN D'AMATO**

Senior Vice President  
+1 201 712 5616  
stephen.damato@cbre.com

**±132,685 SF NEW CONSTRUCTION FOR LEASE**

4050 TREMLEY POINT ROAD | LINDEN, NEW JERSEY



[WWW.TREMLEYPOINTSOUTH.COM](http://WWW.TREMLEYPOINTSOUTH.COM)