

FOR LEASE

± 7,096 SF



LEASE RATE: \$23 PSF

7747 NW 48th Street

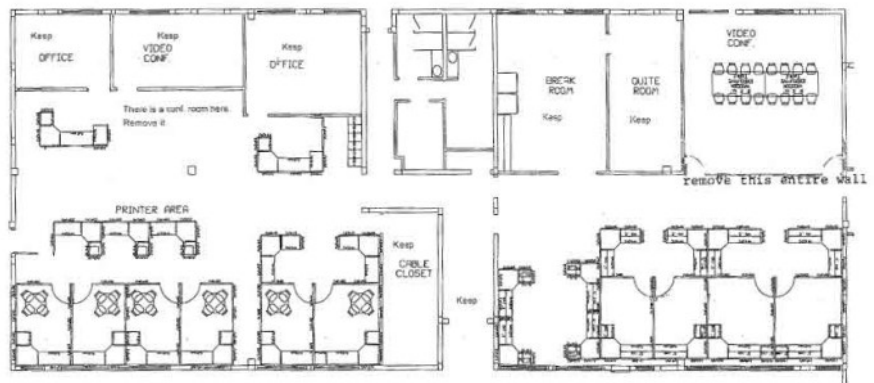
CORPORATE PARK of DORAL

SOCIALLY DISTANCED OFFICE IN CORPORATE PARK SETTING

- ◆ Suite 160 - ± 7,096 SF of Office
- ◆ Private Entrance
- ◆ Private Restrooms
- ◆ Independent A/C
- ◆ Generator Available

6 Months Free Rent

***For Qualified Tenants with 5 Year Lease Terms**



6600 Cow Pen Road, Ste #205
Miami Lakes, FL 33014
www.InfinityCommercial.net
305.947.9514
License Real Estate Brokers

Sherri Beregovoy Cell: 305-803-3781
Sherri@infinitycommercial.net
Andrew Beregovoy Cell: 305-609-6308
Andrew@infinitycommercial.net

FOR LEASE

± 7,096 SF



LEASE RATE: \$23 PSF

7747 NW 48th Street

SOCIALLY DISTANCED OFFICE IN CORPORATE PARK SETTING

- ◆ Parking 5:1000
- ◆ 24 Hour Gated Property
- ◆ AT&T, Comcast and High Speed Fiber Available
- ◆ On Site Property Management

BELOW MARKET RATE!



THIS INFORMATION IS BELIEVED TO BE ACCURATE, AND HAS BEEN OBTAINED FROM SOURCES DEEMED TO BE RELIABLE. ALL INFORMATION SHOULD BE VERIFIED INDEPENDENTLY. THE FLOOR PLANS ABOVE AND HEREIN IS NOT TO SCALE, AND HAS NOT BEEN VERIFIED FOR ACCURACY. WE ARE NOT RESPONSIBLE FOR MISSTATEMENTS OF FACTS, ERRORS, OMISSIONS, PRIOR LEASE, PRICE CHANGE OR WITHDRAWAL WITHOUT NOTICE.



6600 Cow Pen Road, Ste #205
Miami Lakes, FL 33014
www.InfinityCommercial.net
305.947.9514
License Real Estate Brokers

Sherri Beregovoy Cell: 305-803-3781
Sherri@infinitycommercial.net
Andrew Beregovoy Cell: 305-609-6308
Andrew@infinitycommercial.net