

1385 Broadway

S/W/C of West 38th Street

Area:

Entire 7th Floor: 23,500 RSF

Rental Rate:

Upon Request

Possession:

Immediate

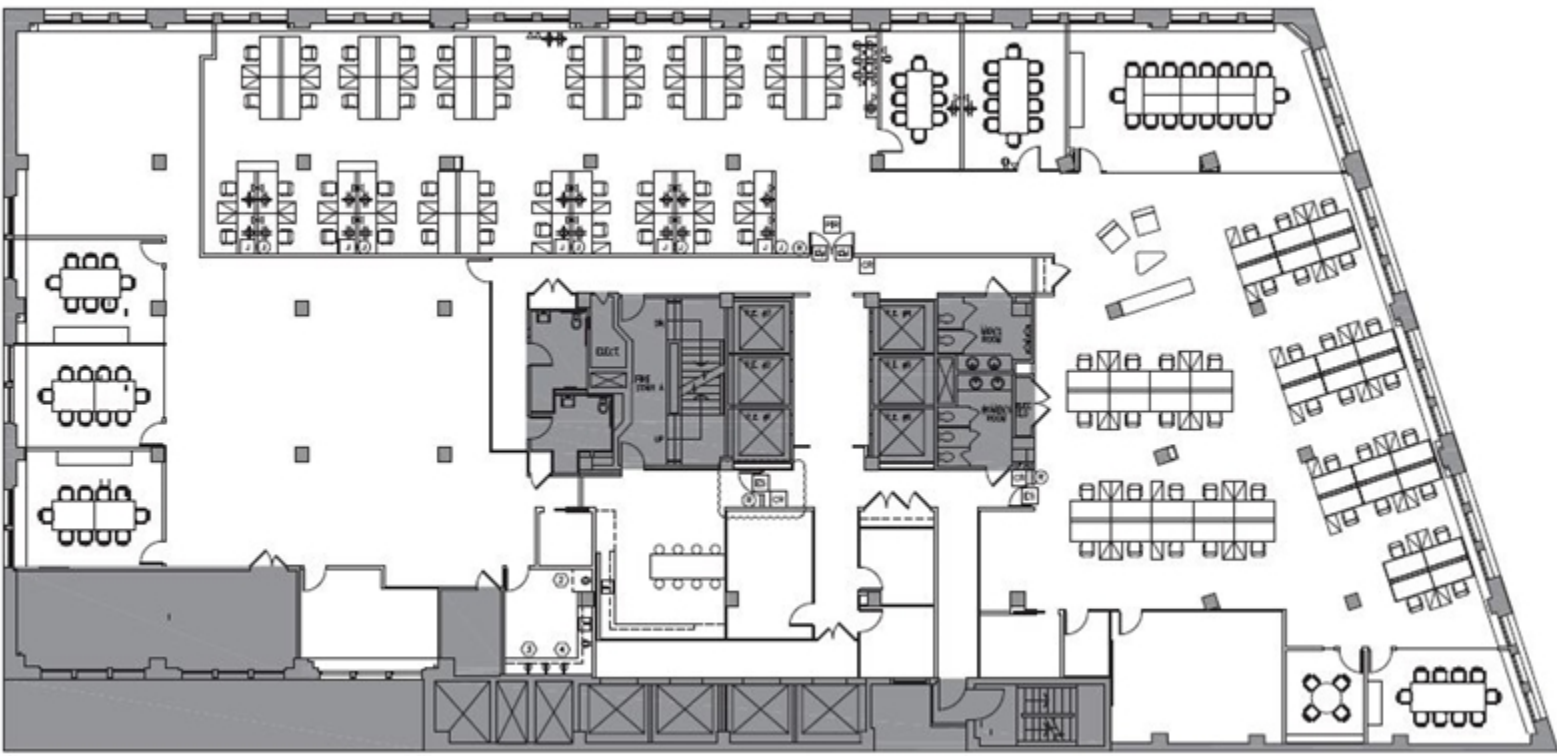
Term:

Through 12/30/2023
(direct extension available)

Comments:

- Plug and play opportunity
- Efficient open layout with extensive conferencing
- Furniture and technology can be made available
- Close proximity to transportation; Herald Square, Penn Station, Port Authority, Grand Central

[DOWNLOAD BROCHURE](#)



For information, please contact:

Douglas Levine

Director

t 212-372-2438

douglas.levine@nmrk.com

Dina Deutsch

Director

t 212-372-2373

dina.deutsch@nmrk.com

125 Park Avenue
New York, NY 10017
t 212-372-2438

nmrk.com



125 Park Avenue, New York, NY 10017 t 212-372-2438

The information contained herein has been obtained from sources deemed reliable but has not been verified and no guarantee, warranty or representation, either express or implied, is made with respect to such information. Terms of sale or lease and availability are subject to change or withdrawal without notice.

©2022 Newmark. All Rights Reserved.