



4,875 SF END CAP FOR LEASE

DEMOGRAPHICS

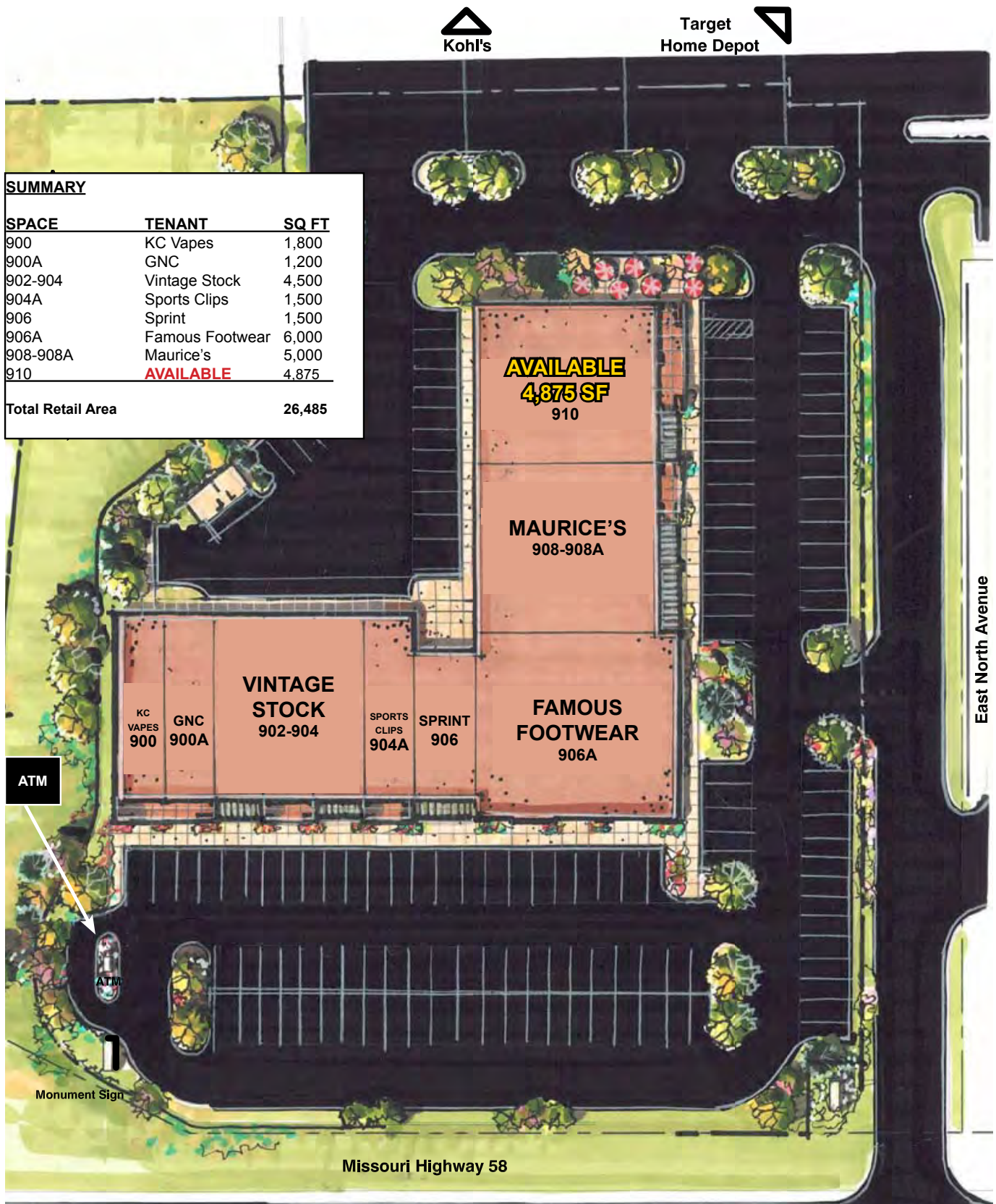
	1 mile	3 miles	5 miles
Estimated Population	6,461	40,255	63,553
Avg. Household Income	\$60,327	\$78,511	\$81,525

- Space can be divided to a minimum 1,500 sq ft
- Class A 26,485 sq ft shopping center
- Located in front of Target, Home Depot, and Kohl's
- Hottest retail area in south Kansas City, Missouri
- Excellent signage on store front, east side, and monument
- Tenants include Famous Footwear, Maurices, Sprint, GNC, Sports Clips, KC Vapes, and Vintage Stock
- Incentives available

[CLICK HERE TO VIEW MORE LISTING INFORMATION](#)

For More Information Contact: *Exclusive Agents*
 TONY DETOMMASO | 816.412.7308 | tdetommaso@blockandco.com
 MAX KOSOGLAD | 816.412.7363 | mkosoglad@blockandco.com

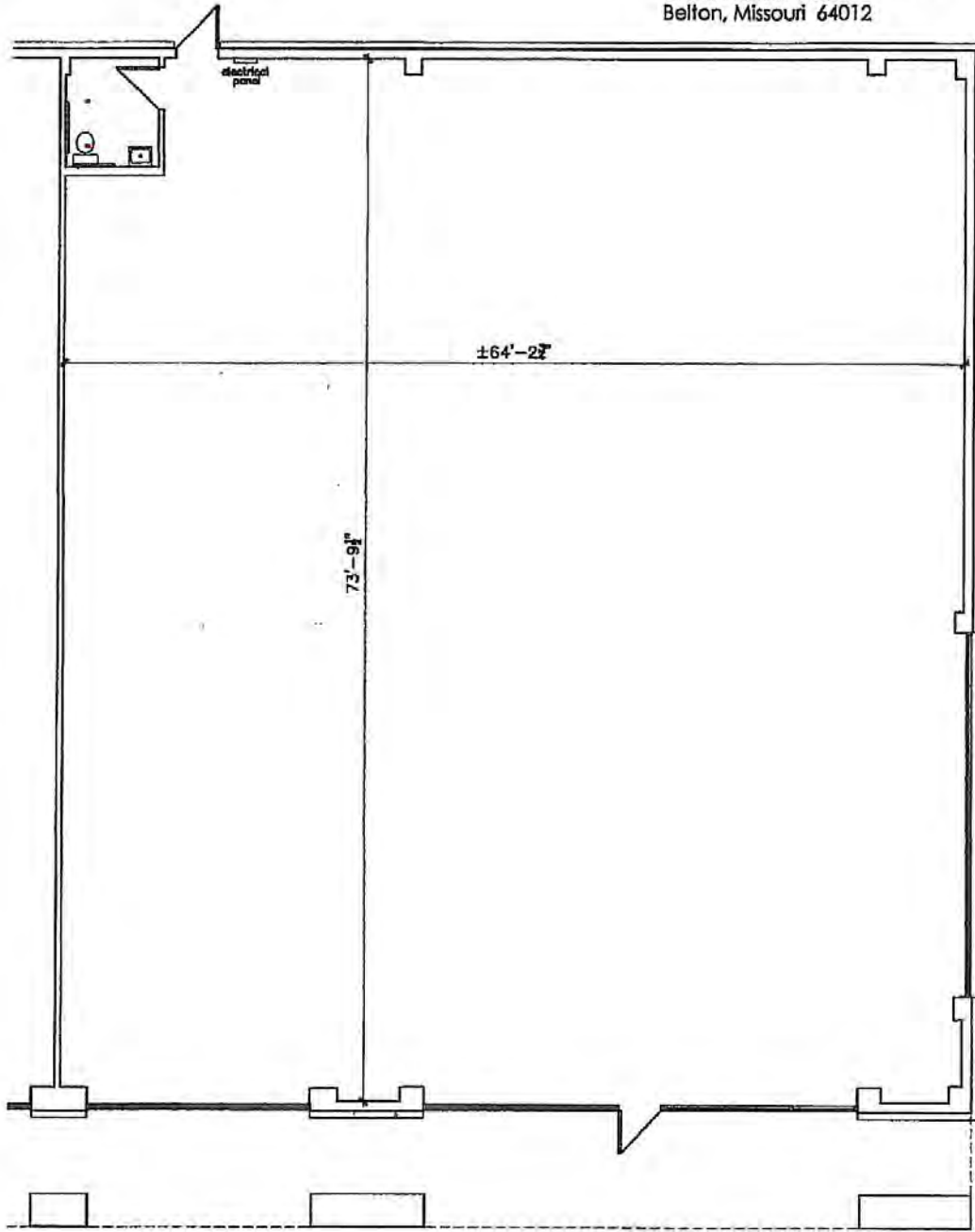
SITE PLAN



4,875 SF SPACE FLOOR PLAN

TENANT VACANCY

BELTON TOWN CENTER
910 E. North Avenue
Belton, Missouri 64012



Floor Plan

±4,895 SF



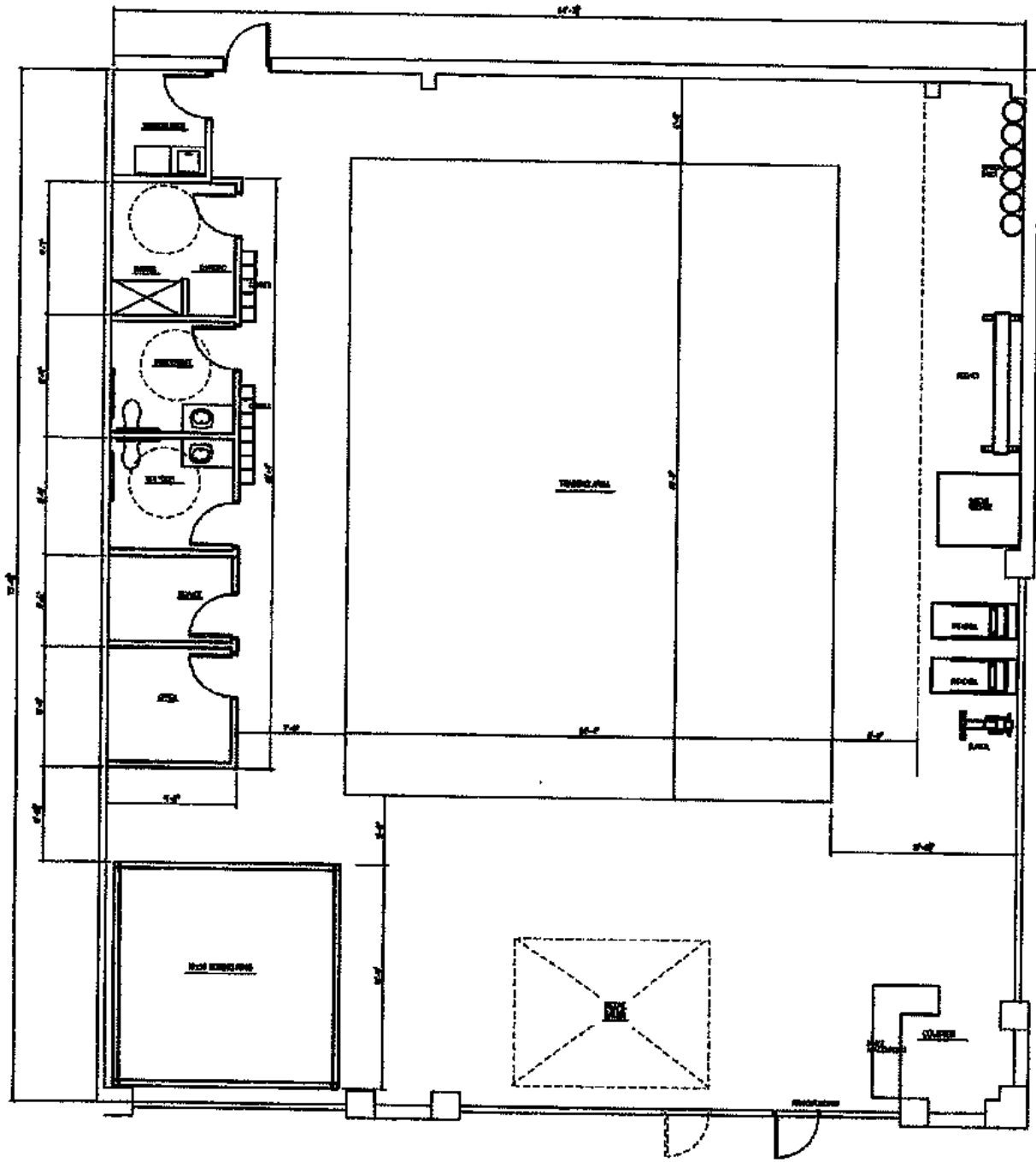
Plan North

Note:
All area calculations are taken to the outside face of dominant portion of exterior wall and the center line of demising walls. No deductions are made for columns and projections necessary to the building.

-9-10)

Scale: 3/32" = 1'-0"

4,875 SF SPACE FLOOR PLAN



FLOOR PLAN #102



CRAIG A. LAMBERT, ARCHITECT, LLC
ARCHITECTURE
DESIGN

515 SW MARKET STREET
LEES SUMMIT, MO. 64063
PHONE: (816) 872-2909 FAX: (816) 946-1880
CELL: (816) 786-3479



BELTON TOWN CENTER (PHASE II)

900-910 E. North Ave., Belton, Missouri

4,875 SF RETAIL
CENTER SPACE
FOR LEASE

4,875 SF SPACE PHOTOS





BELTON TOWN CENTER (PHASE II)

900-910 E. North Ave., Belton, Missouri

4,875 SF RETAIL
CENTER SPACE
FOR LEASE

AERIAL

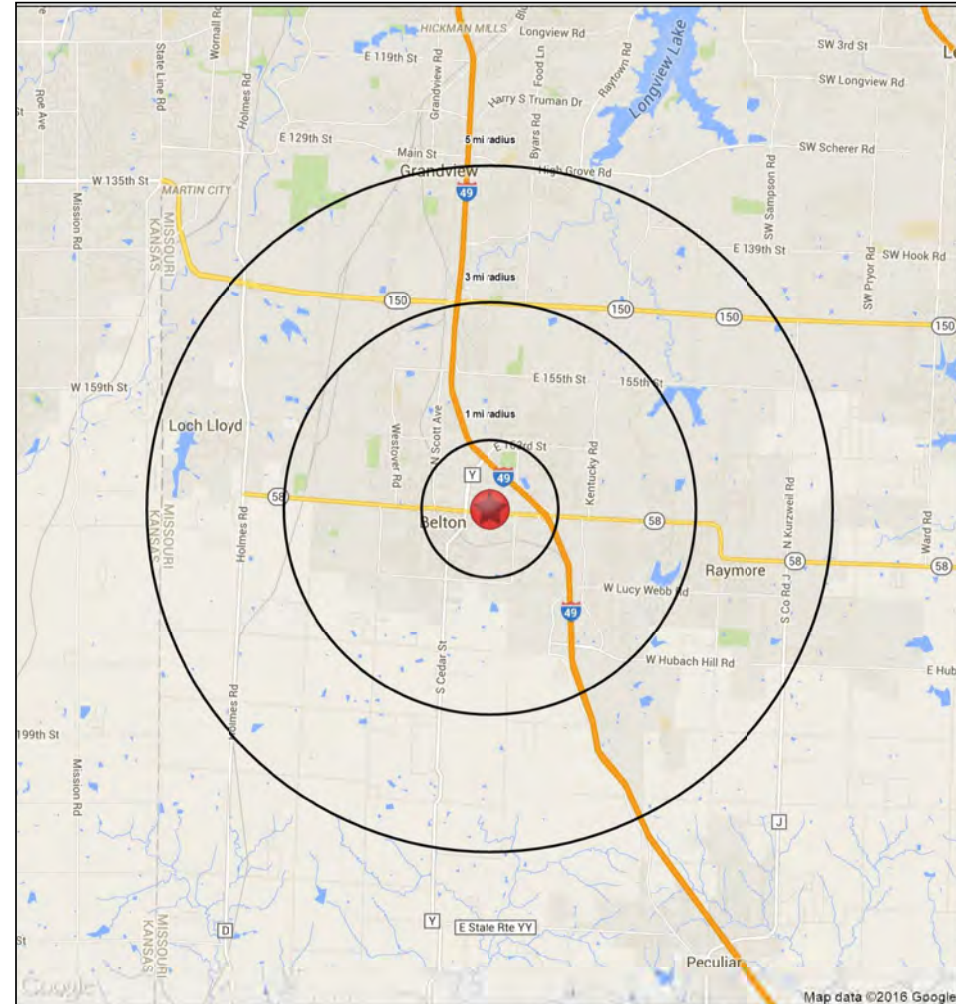
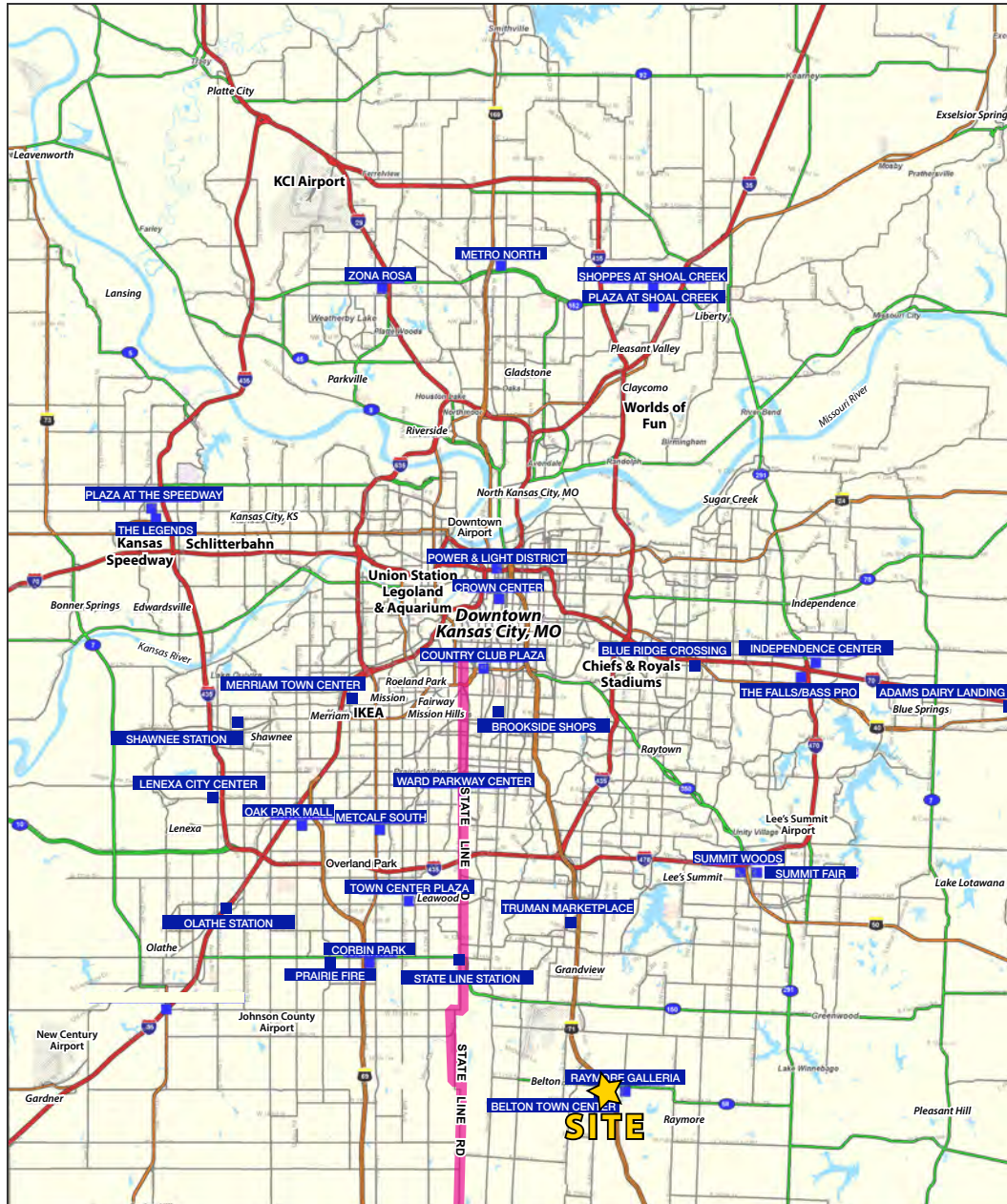




BELTON TOWN CENTER (PHASE II)

900-910 E. North Ave., Belton, Missouri

4,875 SF RETAIL CENTER SPACE FOR LEASE





BELTON TOWN CENTER (PHASE II)

900-910 E. North Ave., Belton, MO | FOR LEASE

900-910 E North Avenue		1 mi radius	3 mi radius	5 mi radius
Belton, MO 64012				
POPULATION	2018 Estimated Population	6,461	40,255	63,553
	2023 Projected Population	6,892	42,798	66,970
	2010 Census Population	6,050	37,801	59,946
	2000 Census Population	4,964	30,527	49,649
	Projected Annual Growth 2018 to 2023	1.3%	1.3%	1.1%
	Historical Annual Growth 2000 to 2018	1.7%	1.8%	1.6%
	2018 Median Age	34.2	35.9	36.8
HOUSEHOLDS	2018 Estimated Households	2,615	15,523	24,393
	2023 Projected Households	2,739	16,206	25,332
	2010 Census Households	2,397	14,218	22,450
	2000 Census Households	1,949	11,326	18,371
	Projected Annual Growth 2018 to 2023	0.9%	0.9%	0.8%
	Historical Annual Growth 2000 to 2018	1.9%	2.1%	1.8%
RACE AND ETHNICITY	2018 Estimated White	80.2%	81.7%	78.6%
	2018 Estimated Black or African American	9.4%	9.5%	12.9%
	2018 Estimated Asian or Pacific Islander	1.2%	1.3%	1.3%
	2018 Estimated American Indian or Native Alaskan	0.6%	0.6%	0.6%
	2018 Estimated Other Races	8.6%	6.9%	6.6%
	2018 Estimated Hispanic	9.3%	7.7%	7.4%
INCOME	2018 Estimated Average Household Income	\$60,327	\$78,511	\$81,525
	2018 Estimated Median Household Income	\$56,894	\$69,632	\$70,719
	2018 Estimated Per Capita Income	\$24,429	\$30,330	\$31,344
EDUCATION (AGE 25+)	2018 Estimated Elementary (Grade Level 0 to 8)	2.1%	2.2%	1.9%
	2018 Estimated Some High School (Grade Level 9 to 11)	5.8%	6.0%	5.4%
	2018 Estimated High School Graduate	38.2%	32.5%	31.2%
	2018 Estimated Some College	28.5%	27.1%	27.1%
	2018 Estimated Associates Degree Only	6.0%	6.8%	7.3%
	2018 Estimated Bachelors Degree Only	11.6%	16.0%	17.4%
	2018 Estimated Graduate Degree	7.9%	9.5%	9.8%
BUSINESS	2018 Estimated Total Businesses	456	1,121	1,638
	2018 Estimated Total Employees	4,768	12,371	23,931
	2018 Estimated Employee Population per Business	10.4	11.0	14.6
	2018 Estimated Residential Population per Business	14.2	35.9	38.8