

**Seth Citron**

Office: 337-234-4481  
 Direct: 337-572-0273  
 scitron@stirlingprop.com

**Johnny Tolson**

Office: 337-234-4481  
 Direct: 337-572-0275  
 jtolson@stirlingprop.com

# Pat Street Vacant Land

116 North Pat Street, Lafayette, LA

## For Sale

### Property Summary

1.2 Acres with an excellent location on the SW corner of Willow Street and Pat Street. Proximity and access to I-10 are very good via signalized intersections at Ambassador Caffery.

### Available

- 1.2 Acres

### Price

- \$159,000

### Traffic Counts (ADT 2016)

- Interstate 10, north of site: 79,723
- Willow, west of site: 12,000
- Ambassador Caffery Parkway, south of site: 46,642

### 2018 Demographics

	3 mi.	5 mi.
Population	50,708	125,248
Avg. HH Income	\$54,184	\$63,789





**Seth Citron**

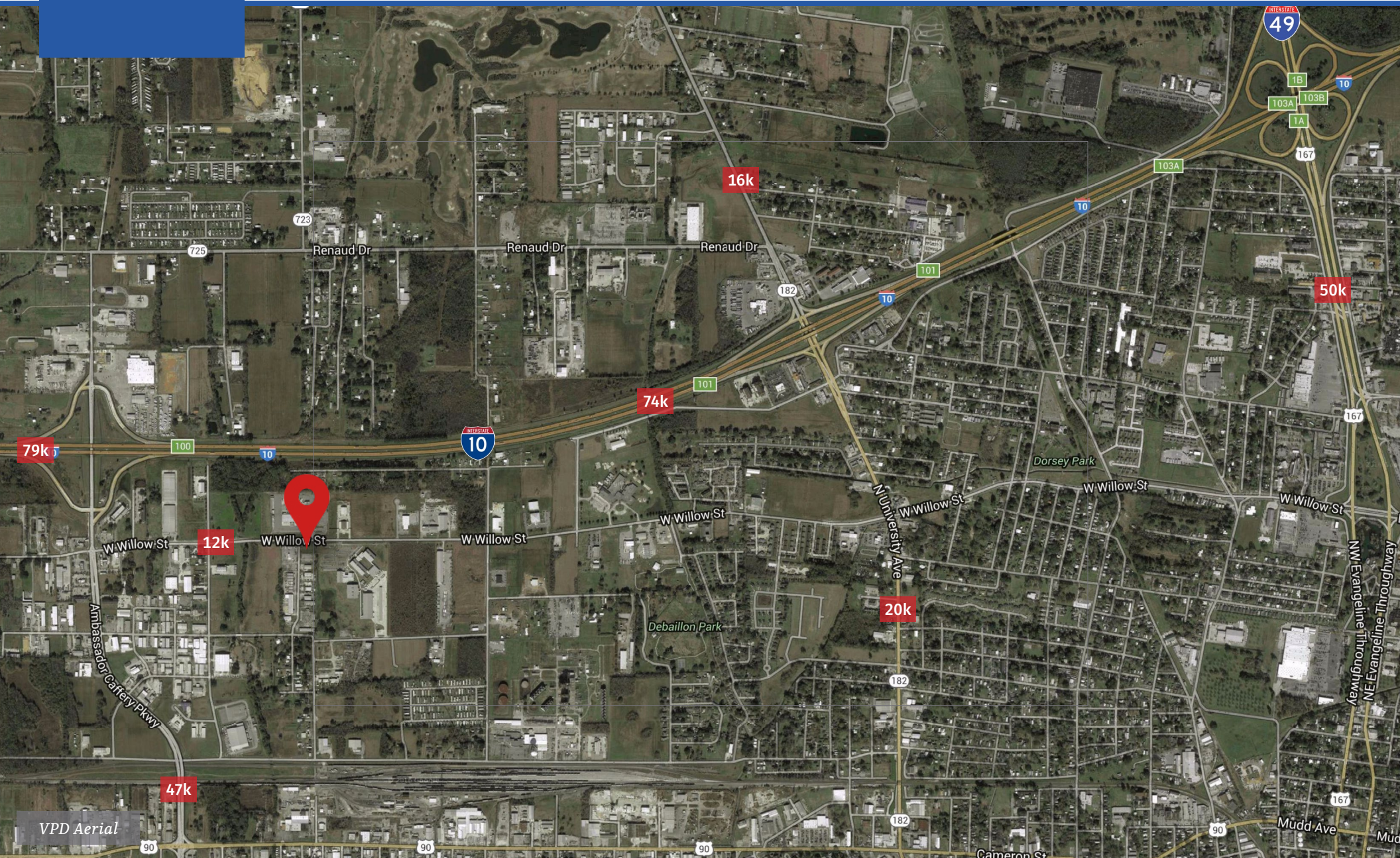
Office: 337-234-4481  
Direct: 337-572-0273  
scitron@stirlingprop.com

**Johnny Tolson**

Office: 337-234-4481  
Direct: 337-572-0275  
jtolson@stirlingprop.com

# Pat Street Vacant Land

116 North Pat Street, Lafayette, LA



VPD Aerial