

# OFFICE SPACE FOR LEASE ASSOCIATED BANK BUILDING 5439 Durand Avenue Mt. Pleasant, Racine, WI



**RE/MAX**  
Newport



Office space available from 286 – 4956 Sq. Ft.

- Professionally Managed 2 story office building
- Aggressive Lease Rates from \$15.95-\$19.95 Sq. Ft. including tax, CAM, Electric, HVAC, and Water & Sewer
- Ample Parking for Employees & Clients
- Handicap Accessibility & ADA Compliant
- Small units available for \$475.00 per month
- Separate entrance for Medical Suite.
- Monument signage available on State Hwy 11



## LOCATION OVERVIEW

The building is located in the Village of Mt. Pleasant, Racine, WI at 5439 Durand Avenue (Hwy 11). Mt. Pleasant is an economically diverse and thriving community, a vital link in the economic strength of the entire Racine/Kenosha area. Hwy 11 is one of the main arterial corridors to Racine and this building has easy access to I-94 being just 4 miles east of I-94. Mitchell Airport is just 25 minutes away and O'Hare Airport is 55 minutes from this location.

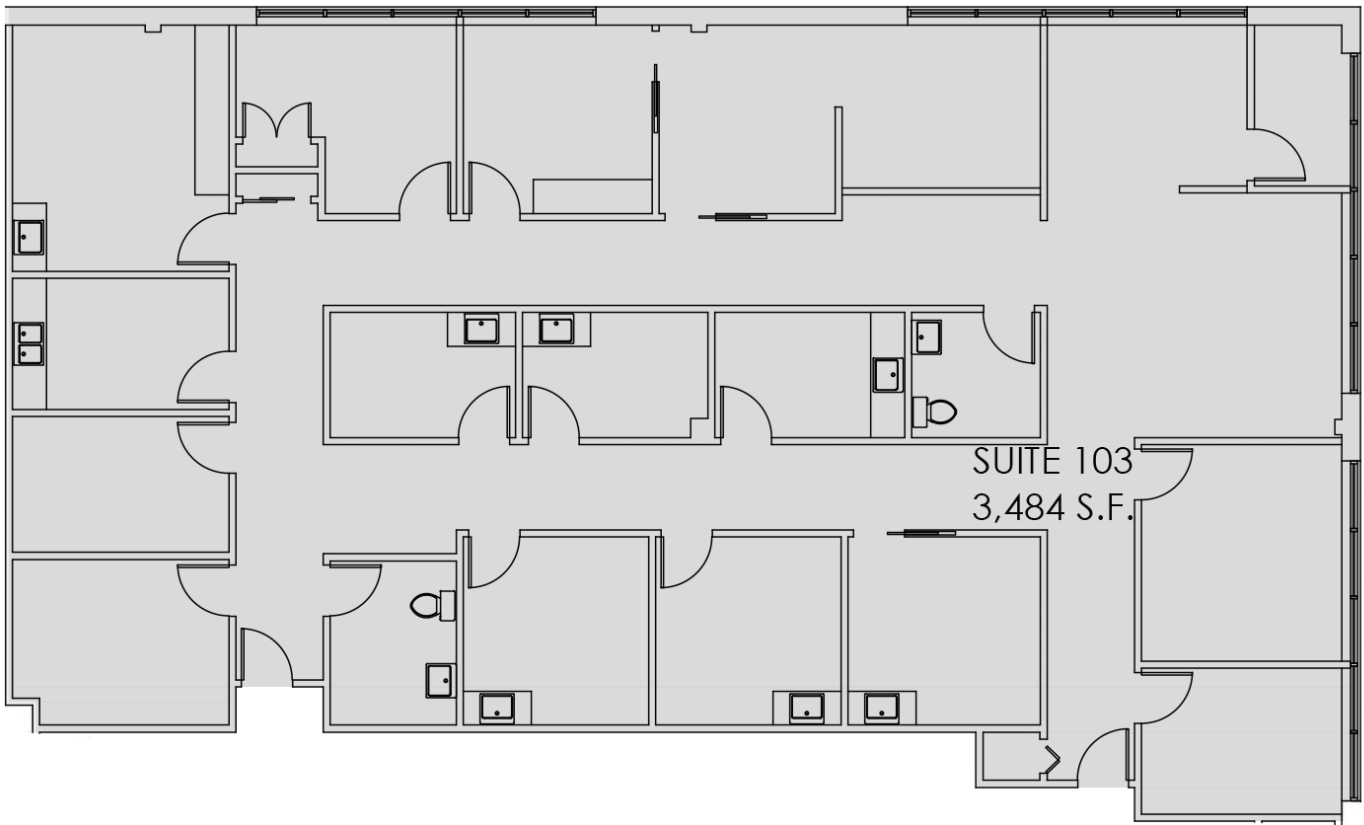
Neighbors include: Associated Bank, Habush, Habush & Rottier Law Firm, Stifel, Nicolaus & Company, Advance Medical Imaging, Stummer Dental, Francesca Dental, Regency Mall to include Boston Store, Burlington Coat Factory and many restaurants.

**Exclusively Marketed by Ron Slaght ReMax Elite Realty**  
**262.498.6936 • ron.slaght@tds.net**

OFFICE SPACE FOR LEASE  
ASSOCIATED BANK BUILDING  
5439 Durand Avenue  
Mt. Pleasant, Racine, WI



**RE/MAX**  
Newport

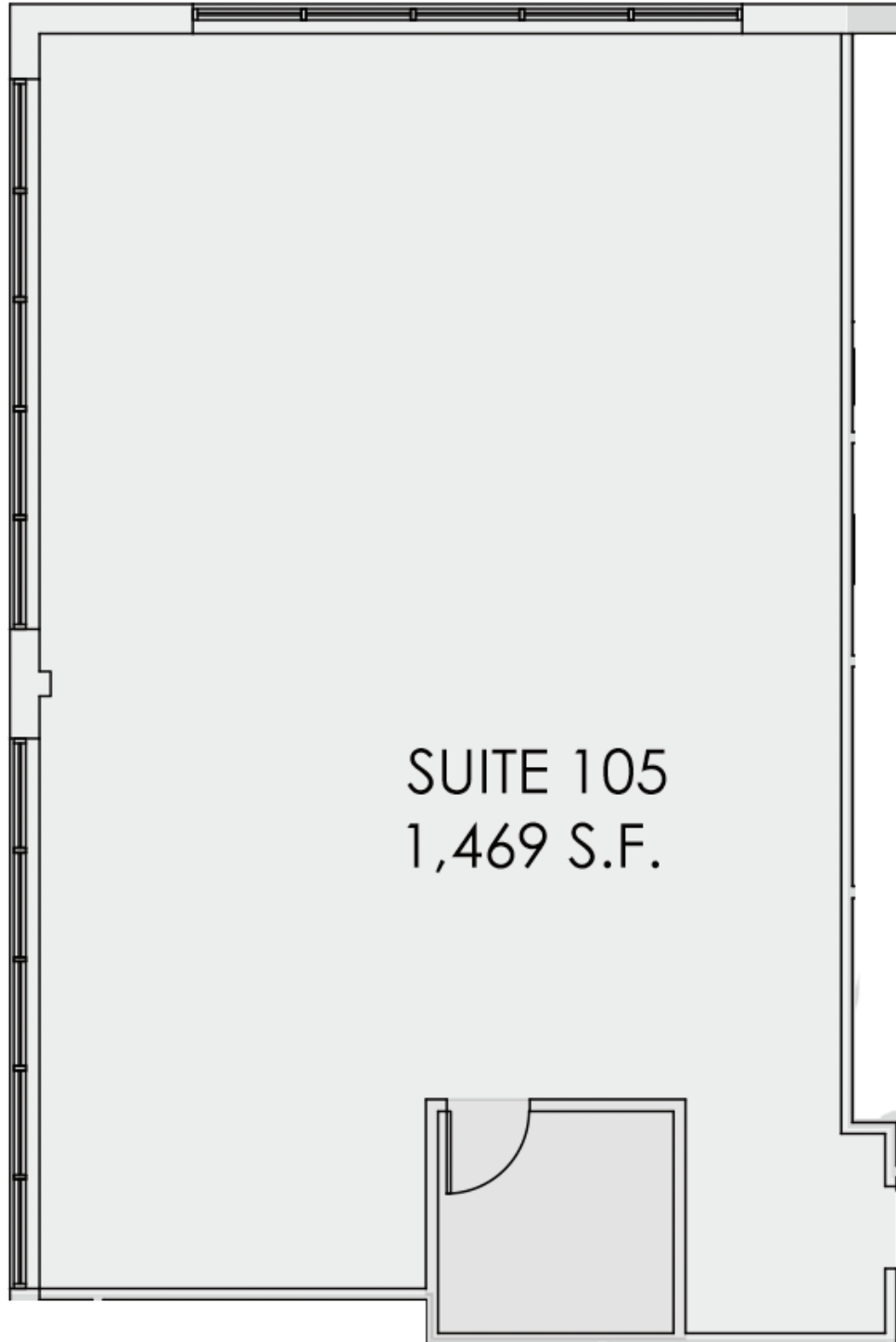


Exclusively Marketed by Ron Slaght ReMax Elite Realty  
262.498.6936 • [ron.slaght@tds.net](mailto:ron.slaght@tds.net)

OFFICE SPACE FOR LEASE  
ASSOCIATED BANK BUILDING  
5439 Durand Avenue  
Mt. Pleasant, Racine, WI



**RE/MAX**  
Newport

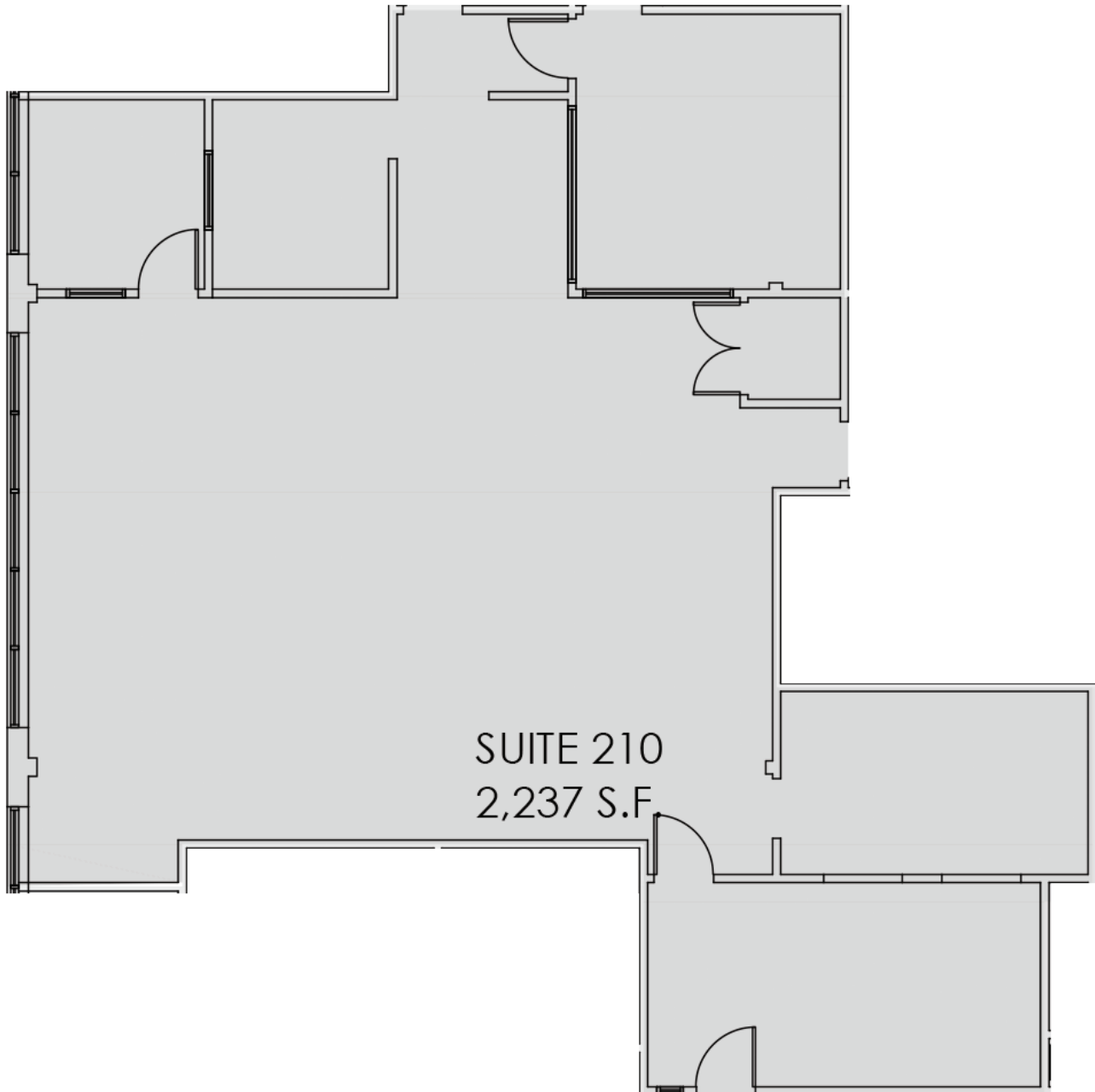


Exclusively Marketed by Ron Slaght ReMax Elite Realty  
262.498.6936 • [ron.slaght@tds.net](mailto:ron.slaght@tds.net)

OFFICE SPACE FOR LEASE  
ASSOCIATED BANK BUILDING  
5439 Durand Avenue  
Mt. Pleasant, Racine, WI



**RE/MAX**  
Newport

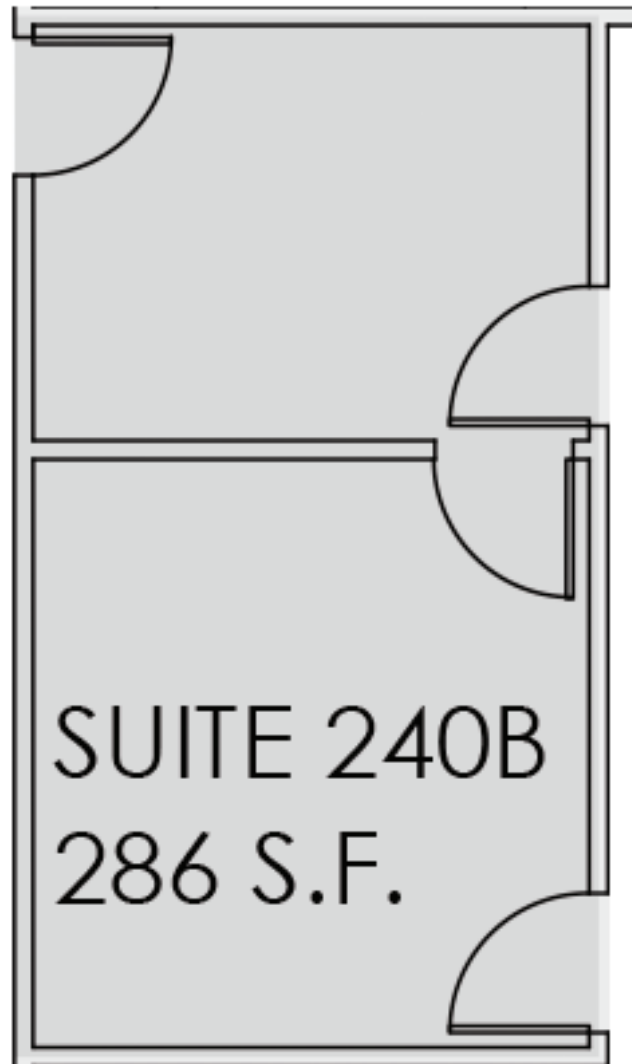


Exclusively Marketed by Ron Slaght ReMax Elite Realty  
262.498.6936 • [ron.slaght@tds.net](mailto:ron.slaght@tds.net)

OFFICE SPACE FOR LEASE  
ASSOCIATED BANK BUILDING  
5439 Durand Avenue  
Mt. Pleasant, Racine, WI



**RE/MAX**  
Newport



Exclusively Marketed by Ron Slaght ReMax Elite Realty  
262.498.6936 • [ron.slaght@tds.net](mailto:ron.slaght@tds.net)