



OBERER

REALTY SERVICES, LTD.

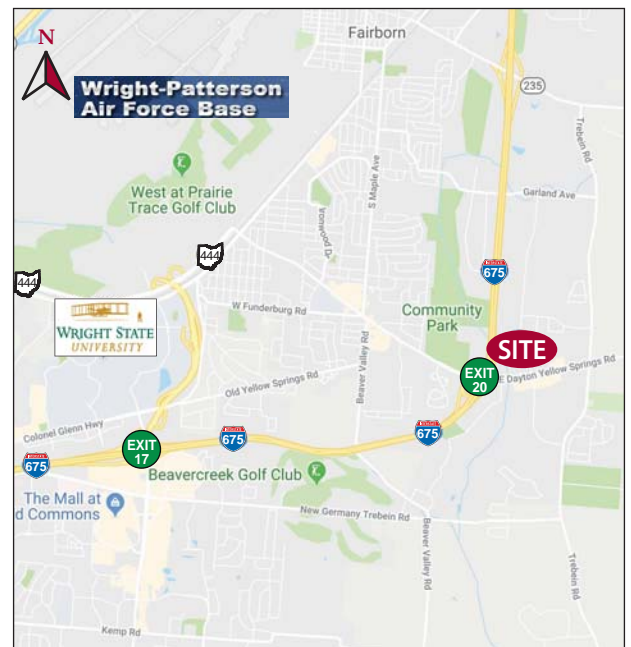
FOR LEASE 1105 EMPIRE COURT

Fairborn, Ohio 45324



- **1,000 - 2,100 +/- SF PROFESSIONAL/MEDICAL OFFICE SPACE FOR LEASE** just off I-675 & E. Dayton Yellow Springs Rd. in Fairborn
- **NEW CONSTRUCTION WITH BUILD-TO-SUIT FINISH**
- **LOCATED IN WELL-ESTABLISHED VALLE GREENE NORTH**, a 325-acre mixed use development offering retail, restaurant, professional/medical amenities
- **BUILDING SIGNAGE AVAILABLE**
- **EASY ACCESS TO I-675**
- **CONVENIENTLY LOCATED** just minutes from Wright-Patterson Air Force Base and Wright State University

CONTACT DANIELLE KUEHNLE
at 937-910-0851 for more information



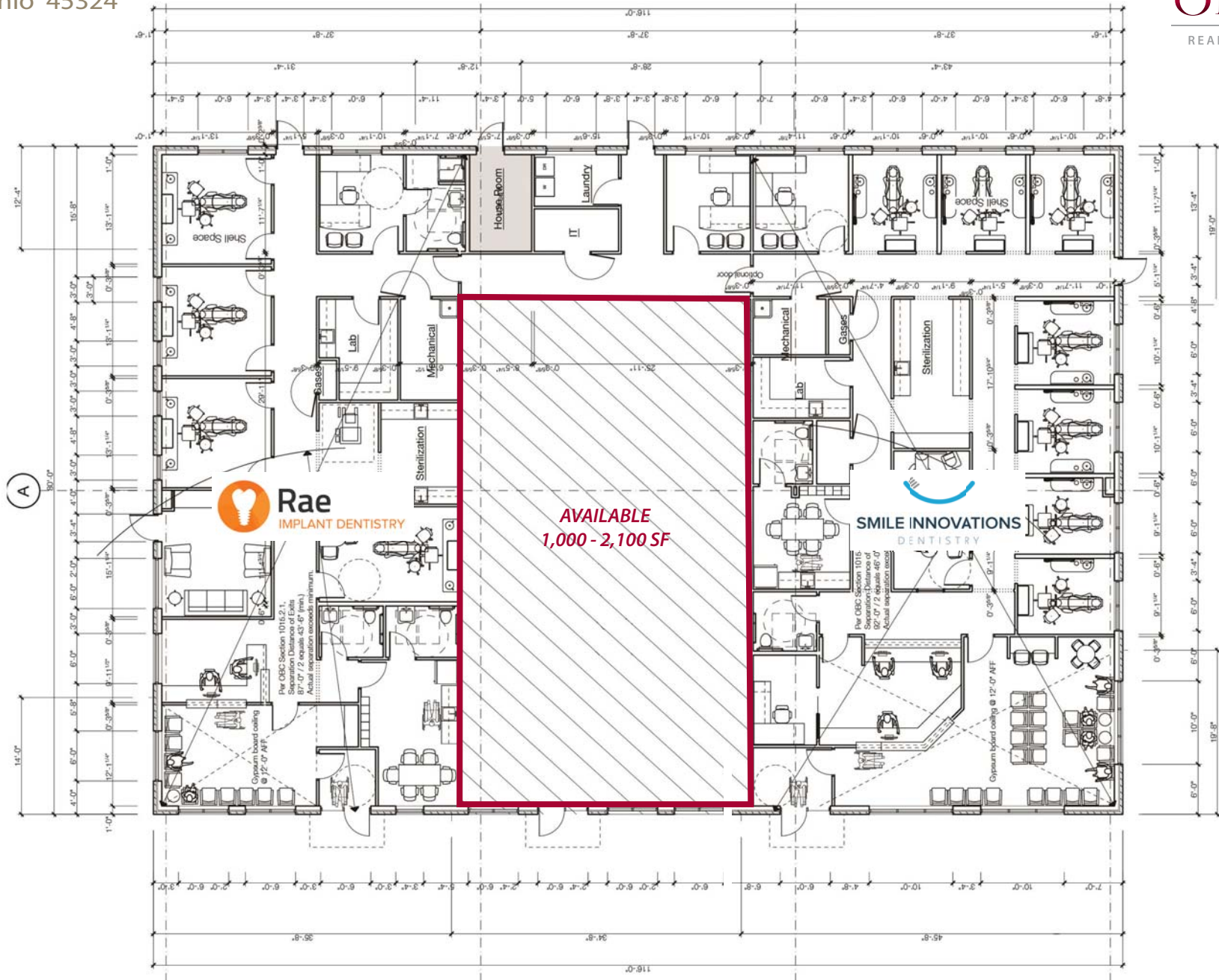
WELCOME TO THE REGION WE KNOW

937-910-0851 • 3445 Newmark Drive, Miamisburg, Ohio 45342 • www.oberer.com/commercial

FOR LEASE

1105 EMPIRE COURT

Fairborn, Ohio 45324



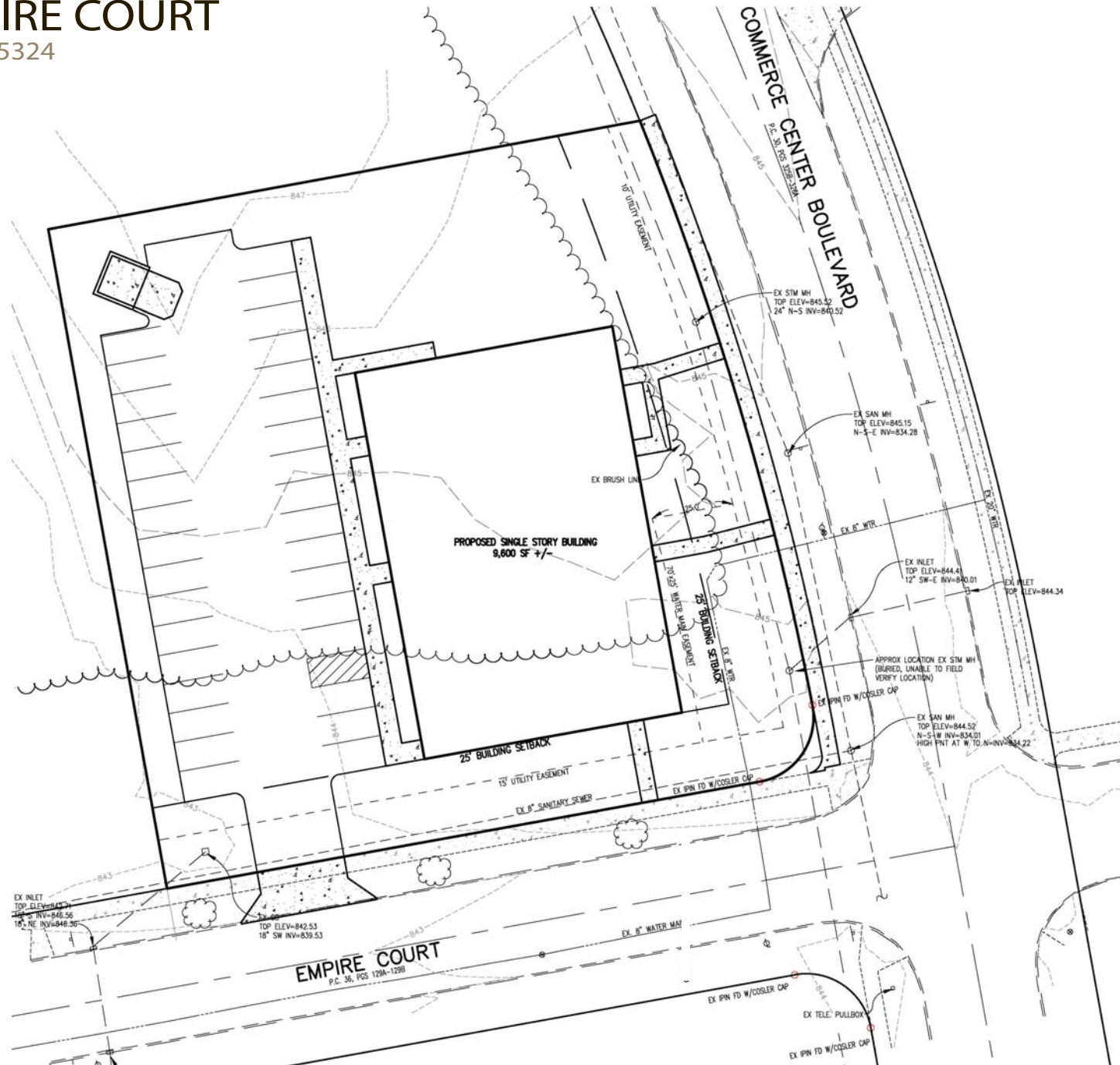
WELCOME TO THE REGION WE KNOW

937-910-0851 • 3445 Newmark Drive, Miamisburg, Ohio 45342 • www.oberer.com/commercial

FOR LEASE

1105 EMPIRE COURT

Fairborn, Ohio 45324



WELCOME TO THE REGION WE KNOW

937-910-0851 • 3445 Newmark Drive, Miamisburg, Ohio 45342 • www.oberer.com/commercial

FOR LEASE

1105 EMPIRE COURT

Fairborn, Ohio 45324



WELCOME TO THE REGION WE KNOW

937-910-0851 • 3475 Newmark Drive, Miamisburg, Ohio 45342 • www.oberer.com/commercial

FOR LEASE

1105 EMPIRE COURT

Fairborn, Ohio 45324



SURROUNDING RESIDENTIAL DEVELOPMENTS



<u>Development</u>	<u># of Approved Lots/Units</u>	<u>% Completed</u>
1. Stonehill Village	2000 lots	90%
2. Fox Ridge Estates	40 lots	100%
3. Nathaniel's Grove	475 lots	10% (Started in late 2016)
4. Spring Ridge/Spring Meadows	388 lots	100%
5. Fairfield Oakes by Redwood	103 units	100%
6. Misty Creek Condominiums	150 units	100%
7. Channingway Apartments	280 units	100%
8. Candlelight Estates	80 lots	100%
9. The Bluffs on Trebein	185 lots	30% (Started in 2015)
10. Meadowlands	96 units	100%
11. The Sanctuary	43 lots	100%
12. Waterford Landing	185 lots	100%

WELCOME TO THE REGION WE KNOW

937-910-0851 • 3445 Newmark Drive, Miamisburg, Ohio 45342 • www.oberer.com/commercial