



# DEVELOPMENT OPPORTUNITY • OUTPARCELS AVAILABLE

PANAMA CITY BEACH, FLORIDA

## SALE

7103 Front Beach Road  
Panama City Beach, FL

## AVAILABLE

3 parcels totaling 53.11 acres

## COMMENTS

- Pricing well below market value
- Excellent development opportunity
- Site was previously approved as Rebecca's Landing, a 1.2 million SF mixed used lifestyle center
- High traffic area
- Highly visible with frontage on both Thomas Drive and Front Beach Road
- Just minutes away from the West Bay sector and the newly opened Northwest Florida International Airport

## PRICING

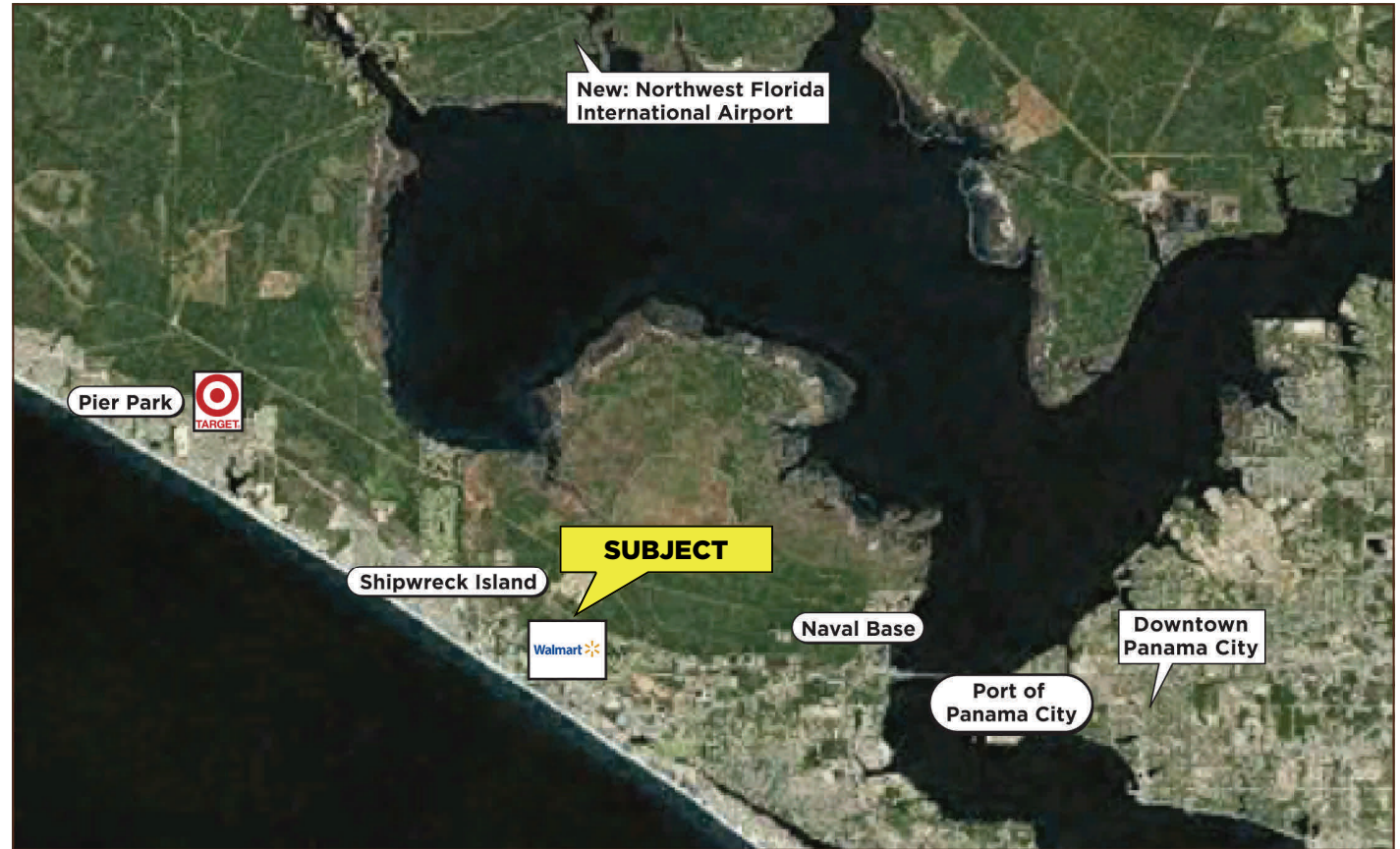
Call For Pricing

## EXCLUSIVE AGENT:

**Jason Carnes**

[jasonc@grahamcompany.com](mailto:jasonc@grahamcompany.com)

850.563.1500



100 Richard Jackson Blvd, Suite 115  
 Panama City Beach, FL 32407  
 TEL 850.563.1500 WEB [www.grahamcompany.com](http://www.grahamcompany.com)



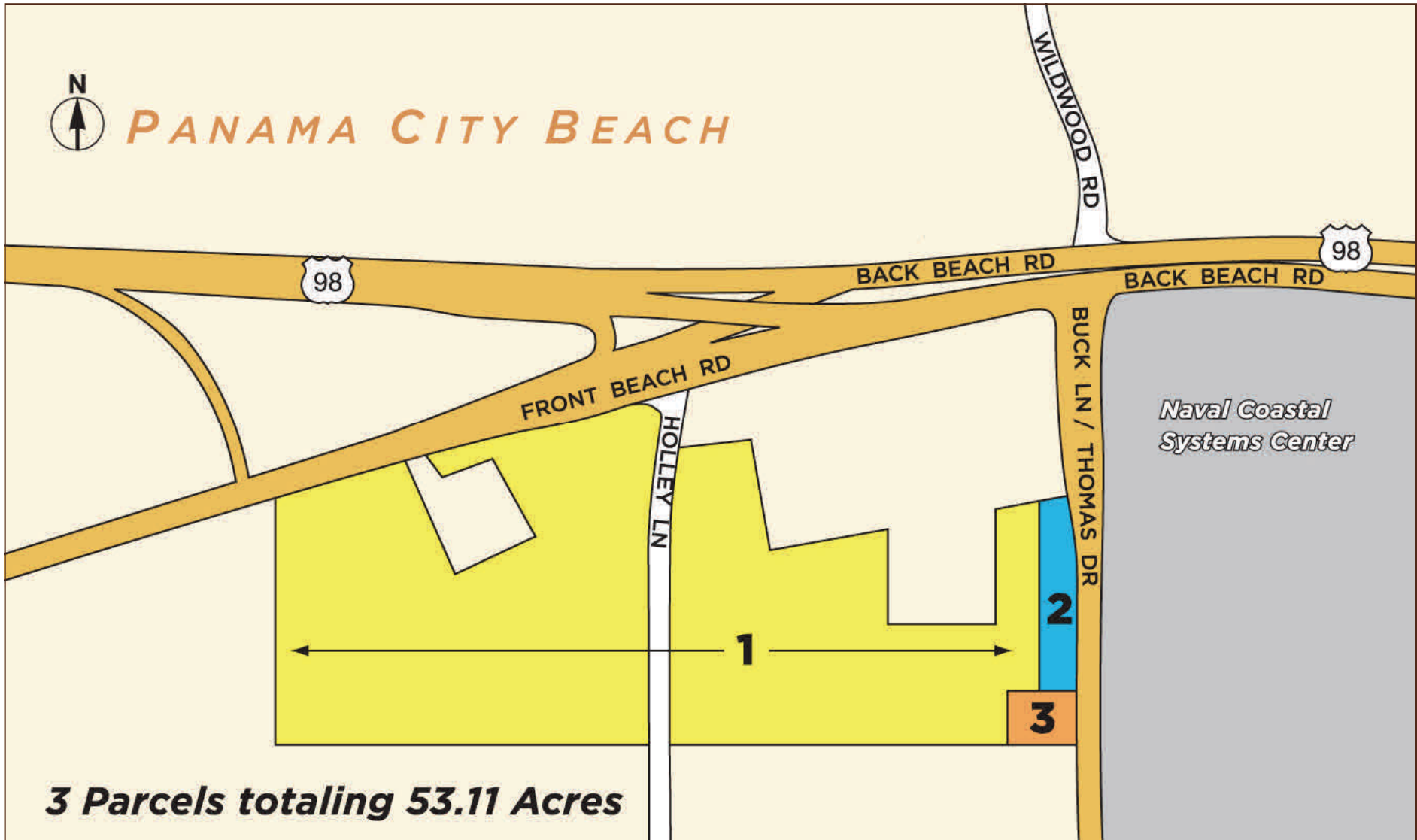
# Graham & Co

Information deemed reliable, but not guaranteed.



# DEVELOPMENT OPPORTUNITY • OUTPARCELS AVAILABLE

PANAMA CITY BEACH, FLORIDA



100 Richard Jackson Blvd, Suite 115  
Panama City Beach, FL 32407  
TEL 850.563.1500 WEB [www.grahamcompany.com](http://www.grahamcompany.com)



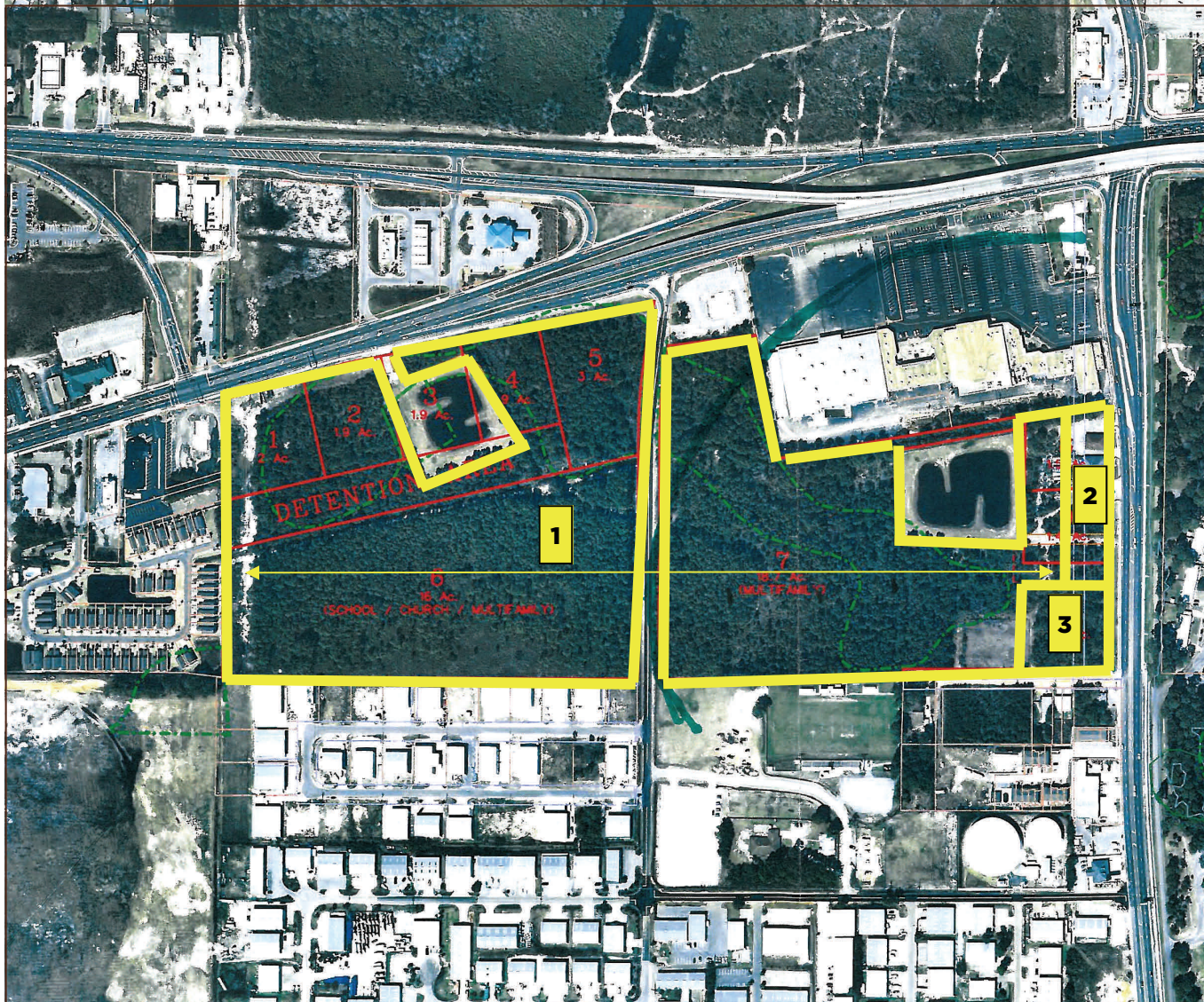
**Graham & Co**

Information deemed reliable, but not guaranteed.



# DEVELOPMENT OPPORTUNITY • OUTPARCELS AVAILABLE

PANAMA CITY BEACH, FLORIDA



100 Richard Jackson Blvd, Suite 115  
Panama City Beach, FL 32407  
TEL 850.563.1500 WEB [www.grahamcompany.com](http://www.grahamcompany.com)

Information deemed reliable, but not guaranteed.



# Graham & Co

