



RETAIL / AUTOMOTIVE BUILDING

13010 W. 95th Street, Lenexa, Kansas



LEASE RATE: \$14/SF MOD GROSS | 3,819 SF SPACE

DEMOGRAPHICS

	1 mile	3 miles	5 miles
Estimated Population	11,428	91,726	227,503
Avg. Household Income	\$68,841	\$87,297	\$91,670

- Turn key automotive space
- Five large bay doors with new motors
- Multiple bathrooms
- Six heaters throughout

 [CLICK HERE TO VIEW MORE LISTING INFORMATION](#)

For More Information Contact:

Exclusive Agents

DANIEL BROCATO | 816.412.7303 | dbrocato@blockandco.com

DAKOTA GRIZZLE | 816.412.7395 | dgrizzle@blockandco.com

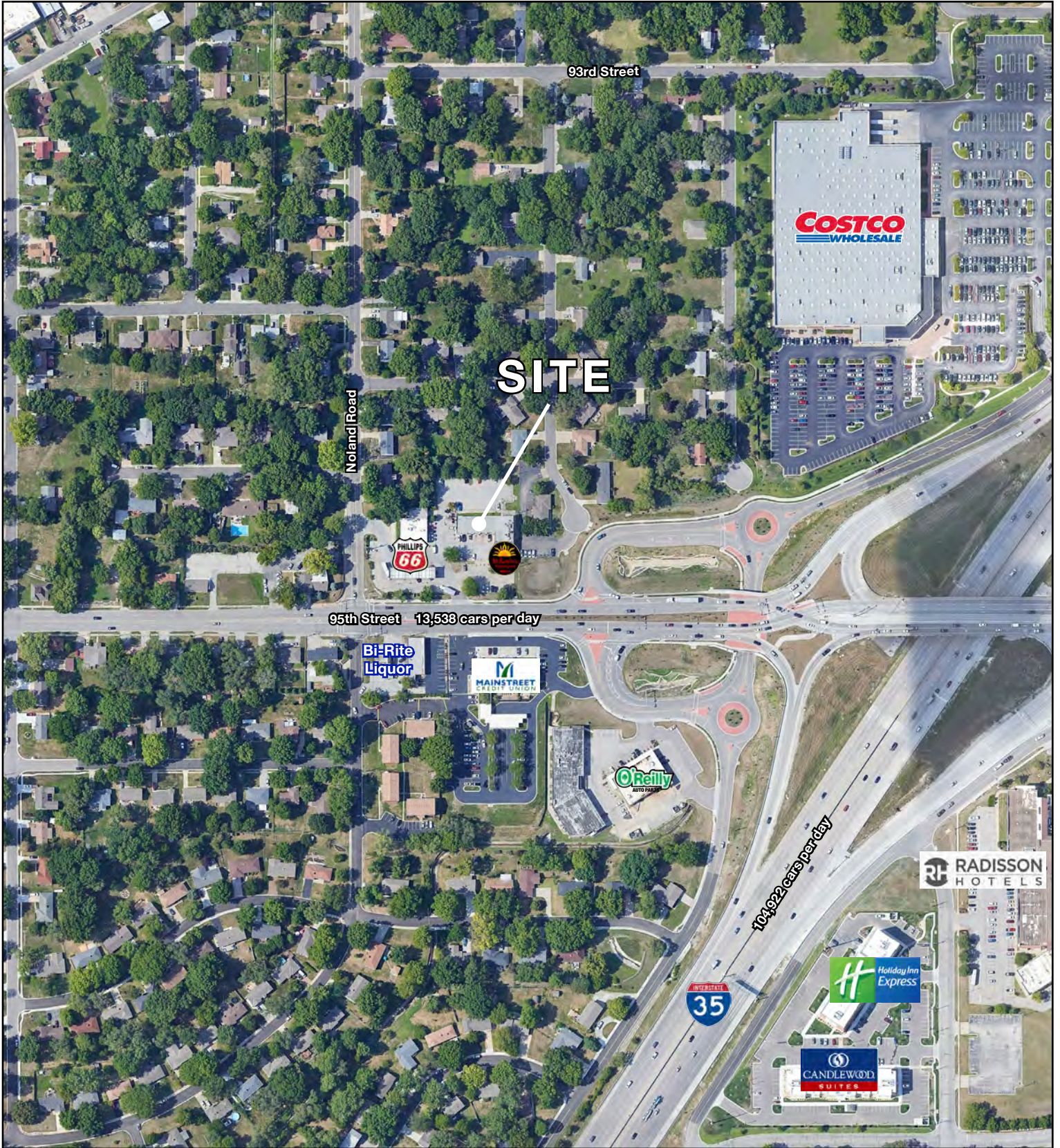
JAY FRIEDMAN | 816.412.7334 | jfriedman@blockandco.com



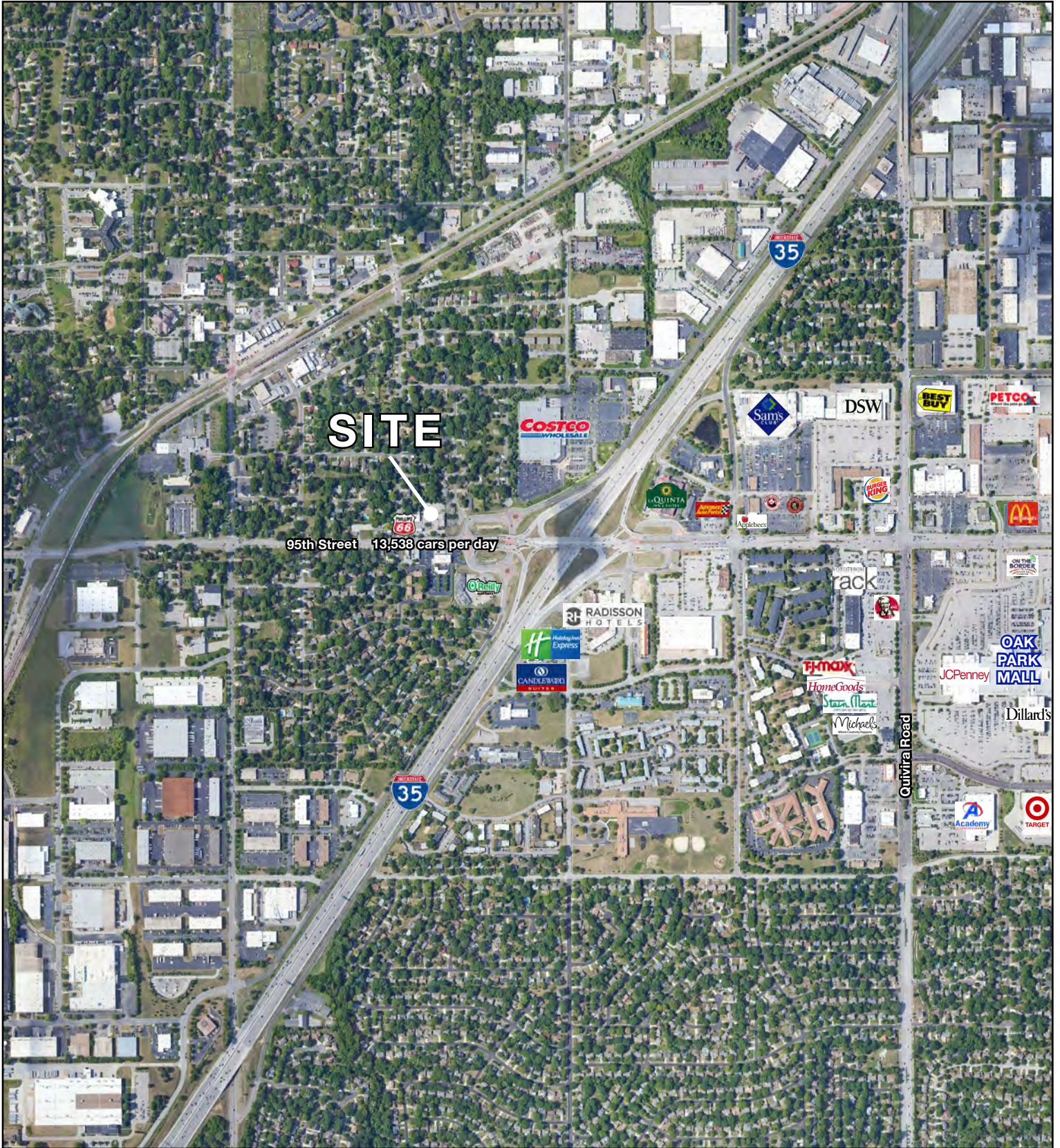
PHOTOS



AERIAL



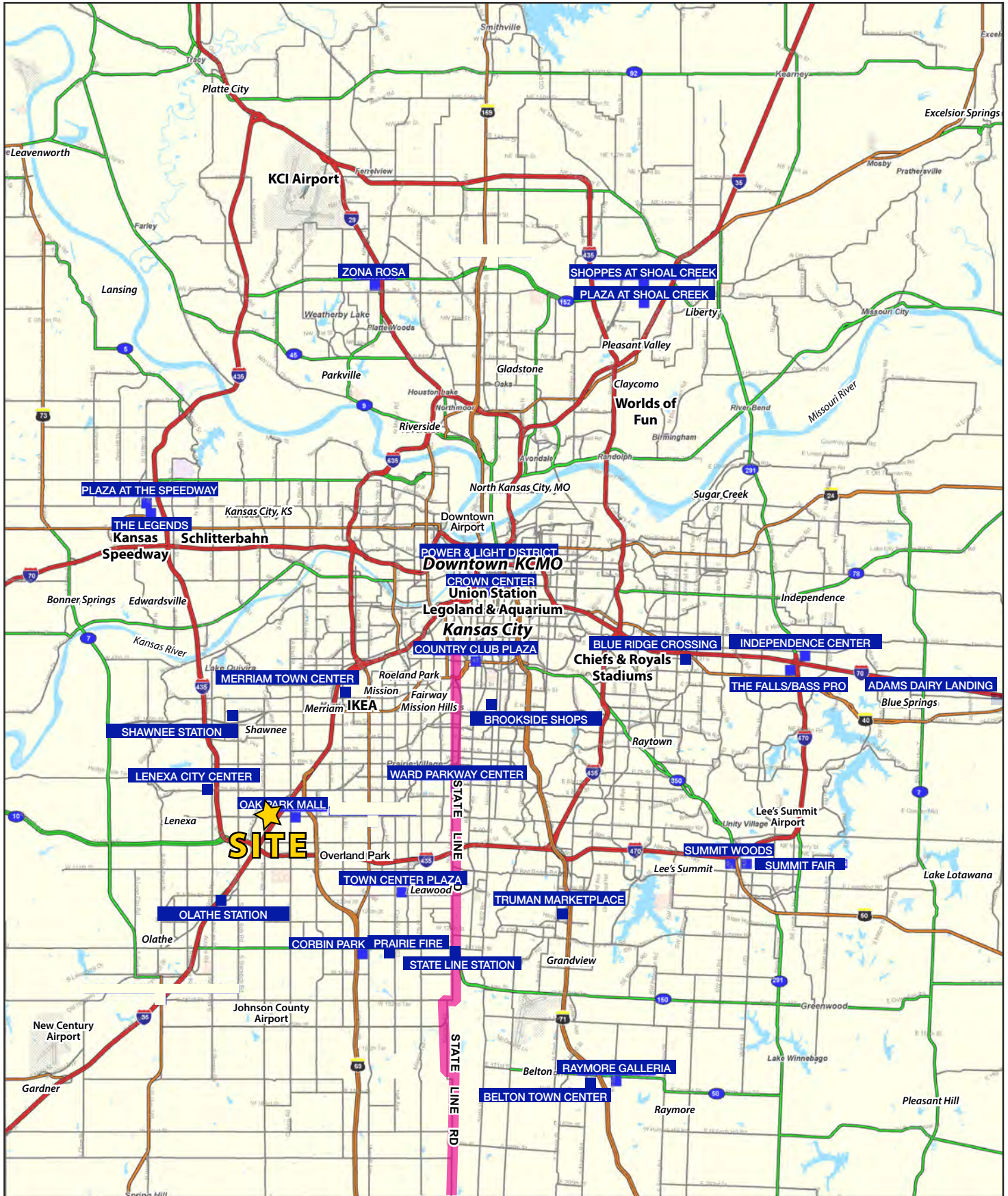
AERIAL

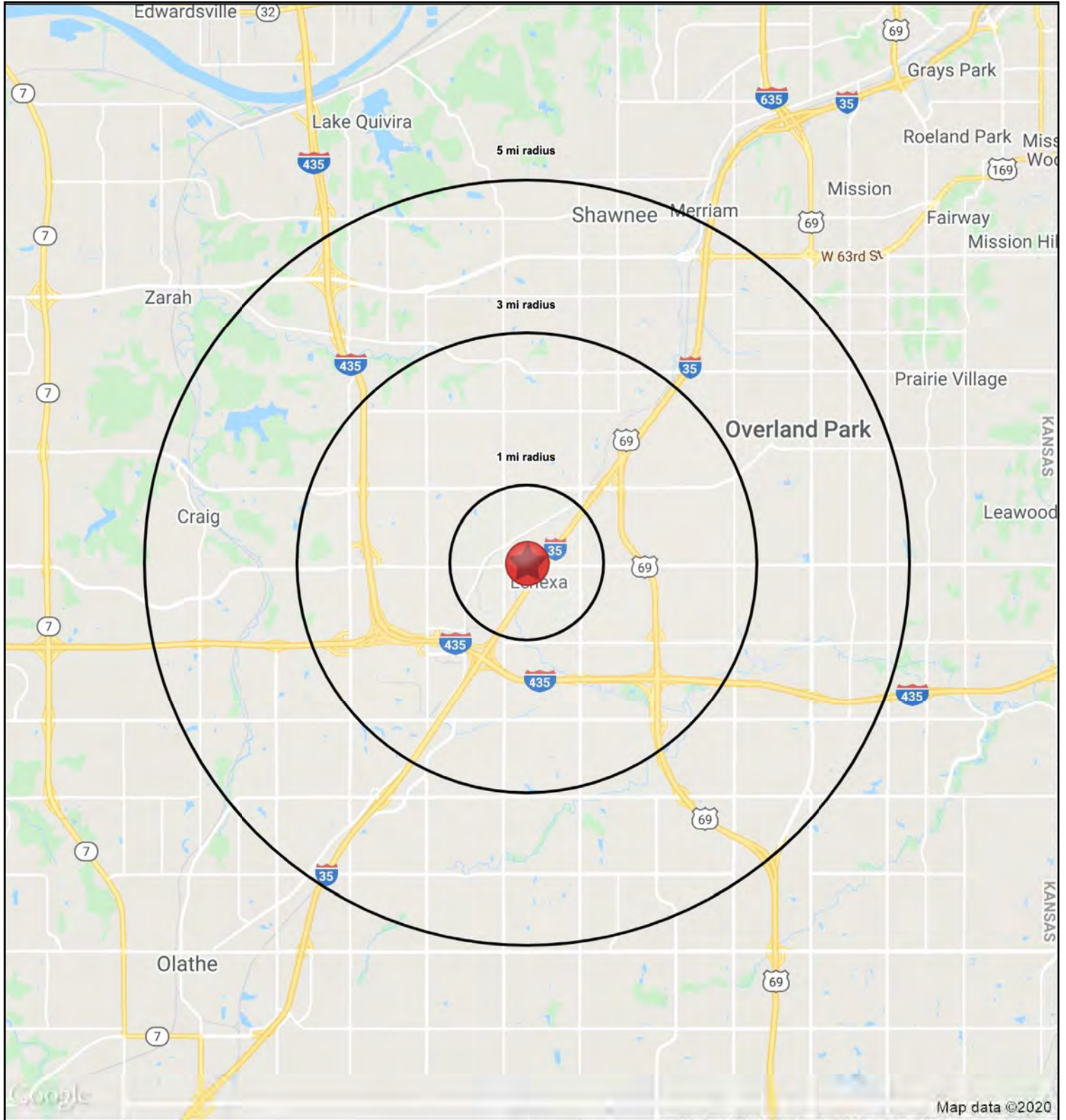




RETAIL / AUTOMOTIVE BUILDING

13010 W. 95th Street, Lenexa, Kansas







RETAIL / AUTOMOTIVE BUILDING

13010 W. 95th Street, Lenexa, Kansas

HS1

13010 W. 95th Street		1 mi radius	3 mi radius	5 mi radius
Lenexa, KS 66215				
POPULATION	2019 Estimated Population	11,428	91,726	227,503
	2024 Projected Population	12,024	96,758	239,953
	2010 Census Population	10,889	85,437	212,445
	2000 Census Population	11,194	83,494	203,002
	Projected Annual Growth 2019 to 2024	1.0%	1.1%	1.1%
	Historical Annual Growth 2000 to 2019	0.1%	0.5%	0.6%
	2019 Median Age	39.0	39.1	39.0
HOUSEHOLDS	2019 Estimated Households	5,146	40,609	99,692
	2024 Projected Households	5,442	42,952	105,427
	2010 Census Households	4,734	36,481	89,905
	2000 Census Households	4,695	34,037	82,885
	Projected Annual Growth 2019 to 2024	1.2%	1.2%	1.2%
	Historical Annual Growth 2000 to 2019	0.5%	1.0%	1.1%
RACE AND ETHNICITY	2019 Estimated White	75.9%	80.3%	81.2%
	2019 Estimated Black or African American	8.2%	7.4%	6.4%
	2019 Estimated Asian or Pacific Islander	4.3%	5.0%	5.6%
	2019 Estimated American Indian or Native Alaskan	0.5%	0.4%	0.4%
	2019 Estimated Other Races	11.0%	6.9%	6.5%
	2019 Estimated Hispanic	15.3%	9.5%	9.2%
INCOME	2019 Estimated Average Household Income	\$68,841	\$87,297	\$91,670
	2019 Estimated Median Household Income	\$62,604	\$77,345	\$79,698
	2019 Estimated Per Capita Income	\$31,233	\$38,710	\$40,240
EDUCATION (AGE 25+)	2019 Estimated Elementary (Grade Level 0 to 8)	6.0%	2.7%	2.5%
	2019 Estimated Some High School (Grade Level 9 to 11)	6.1%	2.9%	2.6%
	2019 Estimated High School Graduate	20.0%	14.9%	15.3%
	2019 Estimated Some College	20.4%	20.4%	19.6%
	2019 Estimated Associates Degree Only	8.5%	8.2%	8.5%
	2019 Estimated Bachelors Degree Only	24.5%	32.1%	32.1%
	2019 Estimated Graduate Degree	14.5%	18.8%	19.5%
BUSINESS	2019 Estimated Total Businesses	1,027	6,251	13,394
	2019 Estimated Total Employees	16,475	87,737	192,733
	2019 Estimated Employee Population per Business	16.0	14.0	14.4
	2019 Estimated Residential Population per Business	11.1	14.7	17.0

