

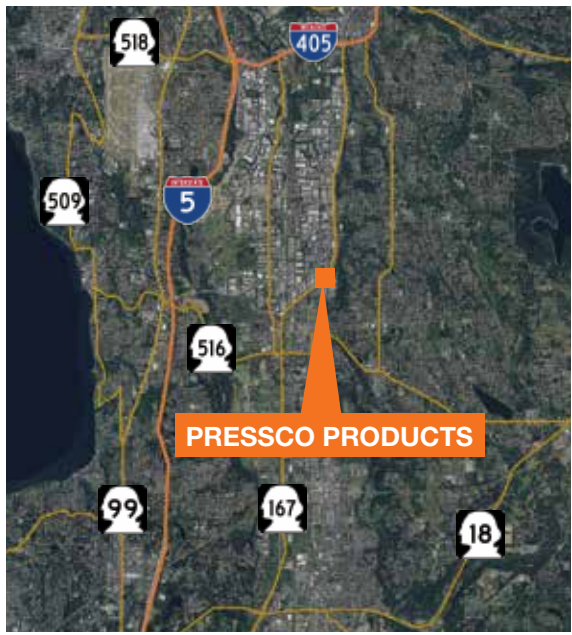
Pressco Products Building

22617 85th Place South
Kent, WA

- ±7,400 SF total
- ±2,000 SF office
- ±31,400 SF land (0.72 AC)
- Grade-level loading
- 14'-16' clear height
- CM1 zoning
- Excellent opportunity for owner/user
- Great access and exposure to SR-167 on-ramp
- Heavy power
- \$1,295,000



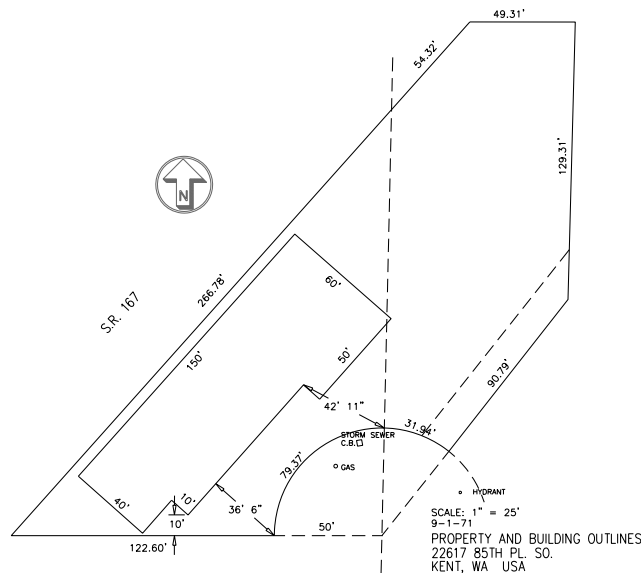
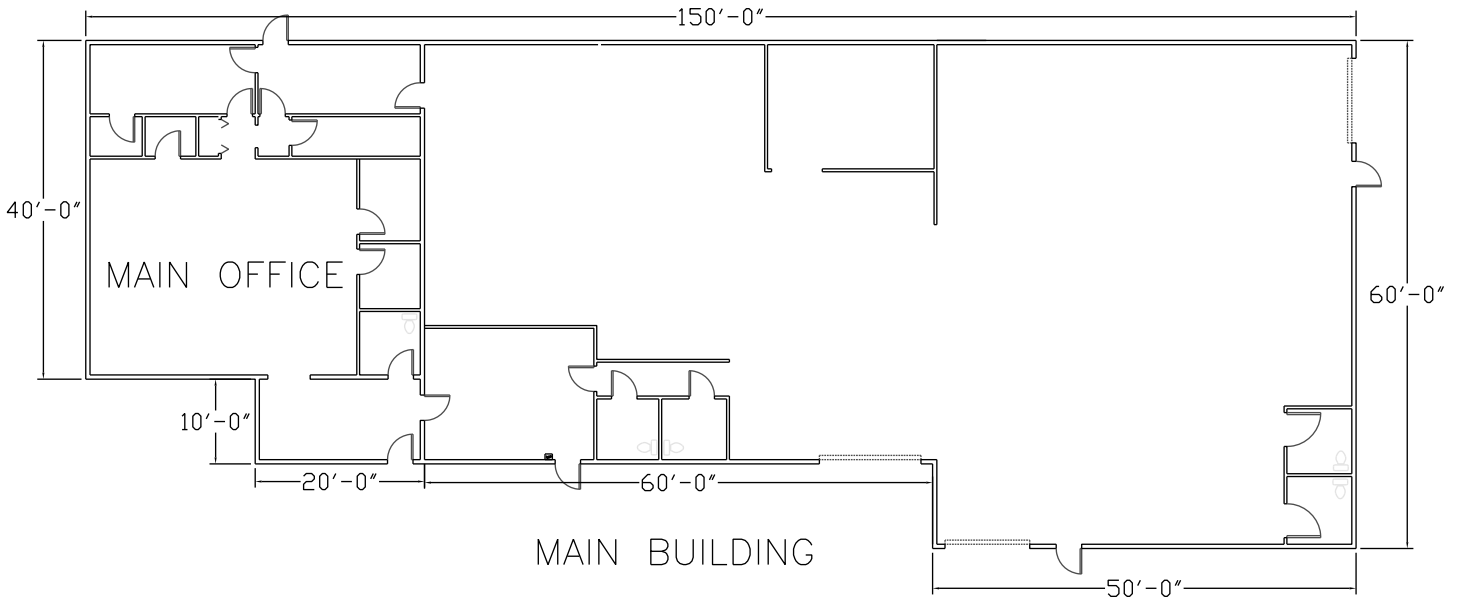
Location



Contact

- Peter Wooding**
206.248.7301
pwooding@kiddermathews.com
- Tony Miltenberger, SIOR**
206.248.7307
tonym@kiddermathews.com
- Thad Mallory, SIOR**
206.248.7338
tmallory@kiddermathews.com

Pressco Products Building



Contact

Peter Wooding
206.248.7301
pwooding@kiddermathews.com

Tony Miltenberger, SIOR
206.248.7307
tonym@kiddermathews.com

Thad Mallory, SIOR
206.248.7338
tmallory@kiddermathews.com