

2,580 SF retail space in a Multi-Use Development at
960 Greene Street in Ann Arbor, Michigan

960 Greene Street

ANN ARBOR MICHIGAN | 48104



VIEW OUR PROPERTY TOUR

FOR LEASE | RETAIL | 2,580 SF

- Ann Arbor's most exciting new high-end residential multifamily community offering 167 units with one outstanding retail opportunity!
- 8 shared covered parking spaces for retail visitors
- The future tenant will service the residents of the building (with a dedicated entrance to the multi-family lobby area), as well as the larger Ann Arbor community
- Just steps away from the Big House at U of M!
- Lease Rate: \$27.00/sq.ft. NNN



**SIGNATURE
ASSOCIATES**
KNOW SIGNATURE | KNOW RESULTS



LEASING INQUIRIES
ERICA DUNLAP
ANGELA THOMAS
NICOLE VOISARD

248 799 3159

ÆRES Team

aeres@signatureassociates.com

A **REDICO**® Property

960 Greene Street

ANN ARBOR Michigan | 48104



DEMOGRAPHICS

	POPULATION	MED. HH INCOME
1 MILE	31,232	\$57,361
3 MILE	112,372	\$78,742
5 MILE	168,895	\$82,863

TRAFFIC COUNTS (TWO-WAY)

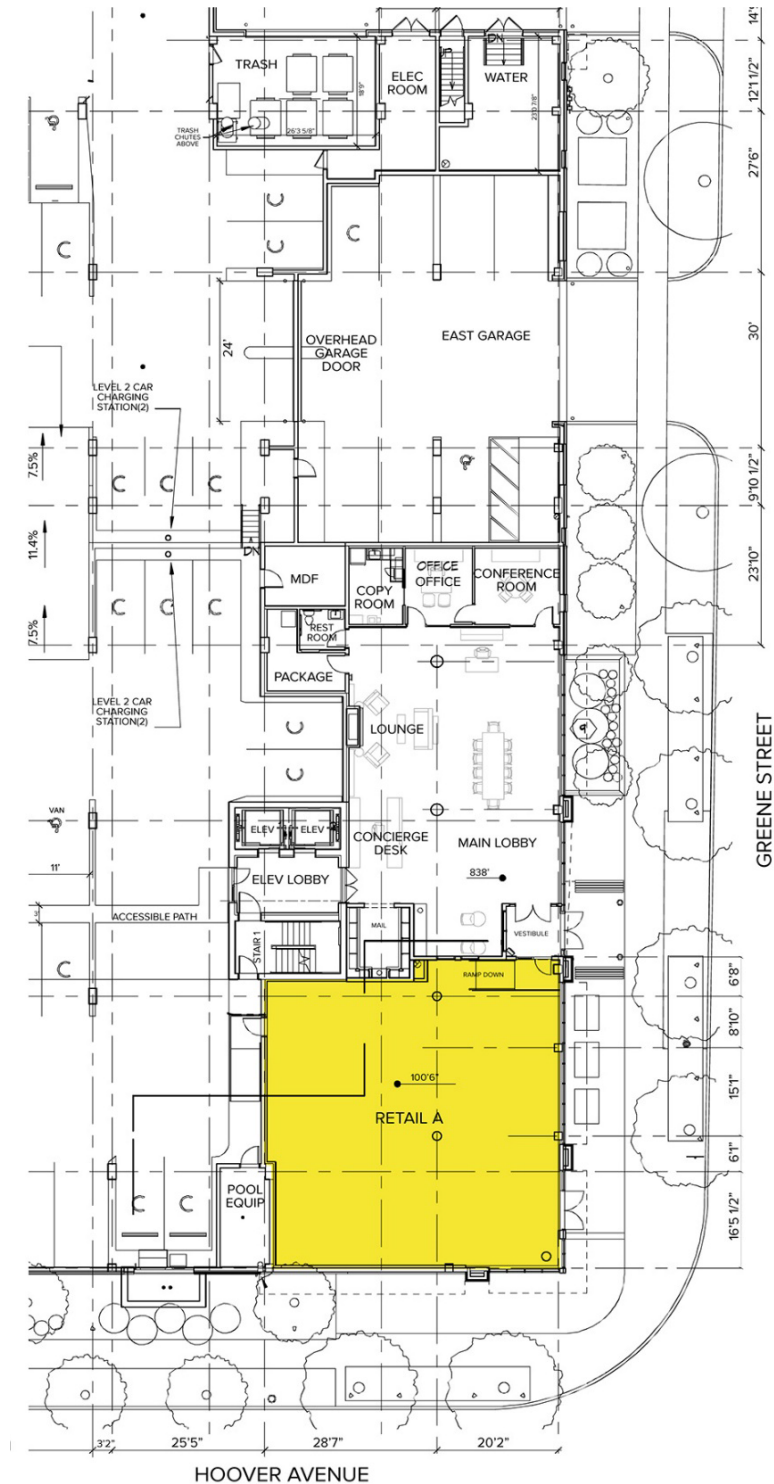
5,869	E. Hoover Ave. E. of Main St. 2-Way
20,443	Main St. N. of E. Hoover Ave. 2-Way
23,431	Main St. S. of E. Hoover Ave. 2-Way

AREA AMENITIES



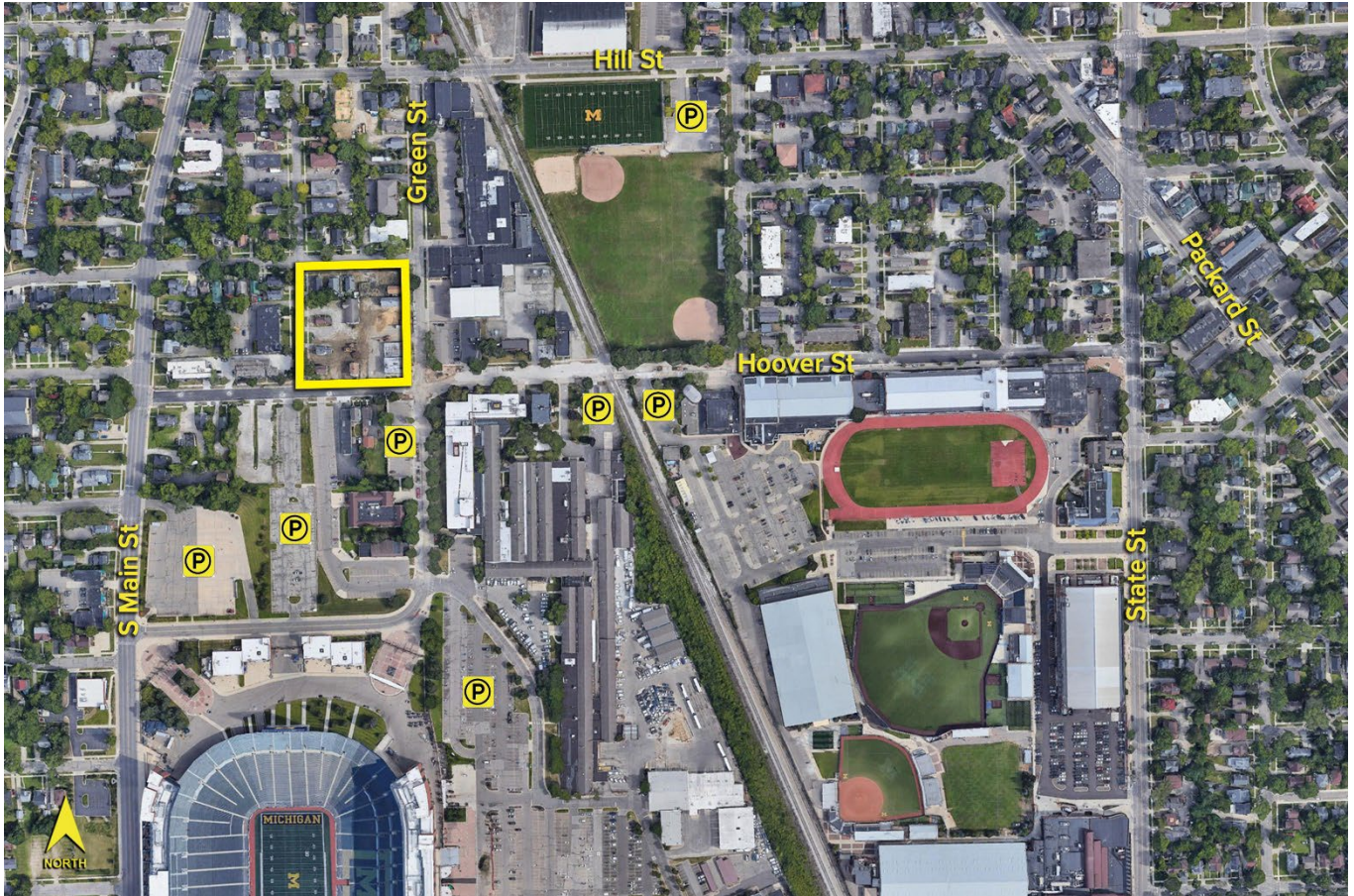
960 Greene Street – Site Plan

ANN ARBOR Michigan | 48104



Nearby Parking Options

ANN ARBOR Michigan | 48104



LOT	ADDRESS	COST	DISTANCE FROM SITE
Lot SC-32	1014 Greene St.	\$1.70, 1- 3 hours \$1.90 4+ hours	~300 ft south
Lot SC-2 & SC 36	1098 E. Keech Ave.	\$1.70, 1- 3 hours \$1.90 4+ hours	0.1 miles south
SC-11 & SC-37	1150 S. State St.	\$1.70, 1- 3 hours \$1.90 4+ hours	0.1 miles east
Lot SC-38	S. Division St.	\$1.70, 1- 3 hours \$1.90 4+ hours	0.4 miles northeast
Lot SC-4	Kipke Dr.	\$1.70, 1- 3 hours \$1.90 4+ hours	0.2 miles south