

Hillside Crossings Mall

19238 – 19262 Evans St NW, Elk River, MN

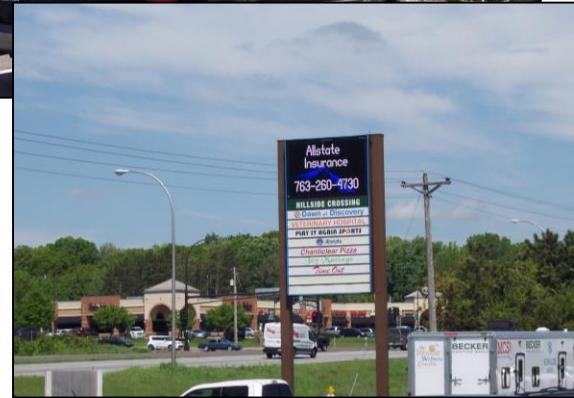


PROPERTY FEATURES

- High visibility retail space for lease
- Traffic light on Highway 169

38,000 vehicles per day (MNDOT 2014)

- Join Play It Again Sports, Chanticlear Pizza, Day Care & Sammy's Pizza Parlour
- Suite 19242: 1,245sf, former Chiropractor / Massage
- Short term leases only – 3 years or less



Visible to Hwy 169

LEASE RATE: \$12.79/NNN CAM/Tax: \$4.95 (2018)

For More Information Contact: MARTY FISHER
PREMIER COMMERCIAL PROPERTIES, LLC
299 Coon Rapids Blvd NW, Coon Rapids, MN 55433
763.862.2005

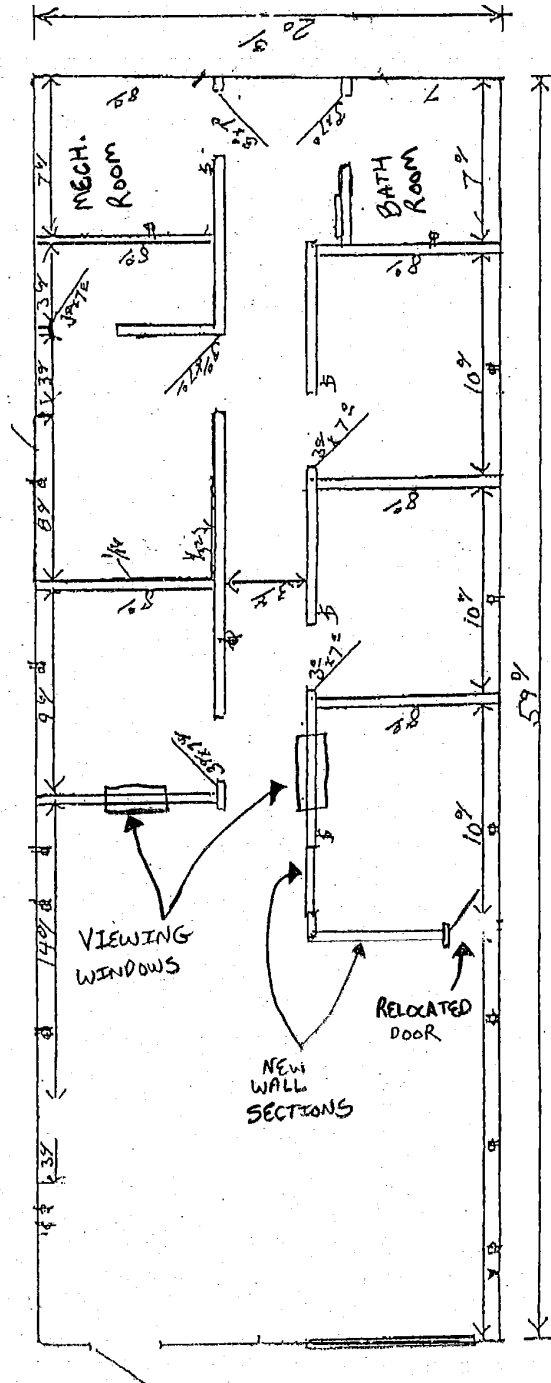
www.premiercommercialproperties.com



Hillside Crossings Mall

19238-19262 Evans St NW Elk River, MN

Suite 19242
1,245 sq ft



For More Information Contact: MARTY FISHER
PREMIER COMMERCIAL PROPERTIES, LLC
299 Coon Rapids Blvd NW, Coon Rapids, MN 55433
763.862.2005

www.premiercommercialproperties.com



Hillside Crossings Mall

19238-19262 Evans St NW Elk River, MN

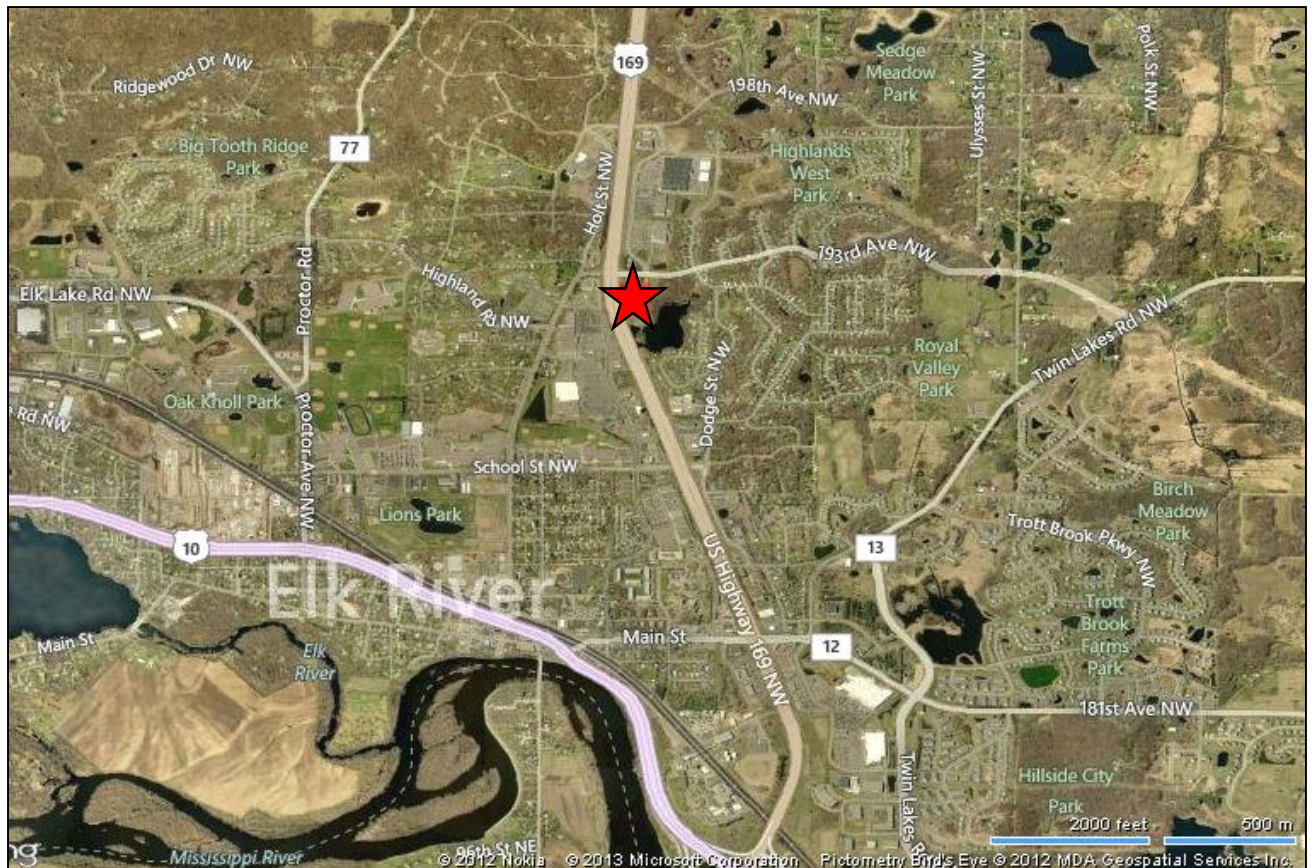


For More Information Contact: MARTY FISHER
PREMIER COMMERCIAL PROPERTIES, LLC
299 Coon Rapids Blvd NW, Coon Rapids, MN 55433
763.862.2005
www.premiercommercialproperties.com



Hillside Crossings Mall

19238-19262 Evans St NW Elk River, MN



DEMOGRAPHICS (2016)	<u>1 mile</u>	<u>3 miles</u>	<u>5 miles</u>
Total Population	5,606	20,997	37,245
Total Households	2,159	7,580	13,024
Total Families	1,453	5,565	9,790
Average Household Income	\$73,885	\$88,434	\$92,946

For More Information Contact: MARTY FISHER
 PREMIER COMMERCIAL PROPERTIES, LLC
 299 Coon Rapids Blvd NW, Coon Rapids, MN 55433

763.862.2005

www.premiercommercialproperties.com

