

3816 E. Morgan Avenue  
Evansville, IN 47715



- 3000 SF available (50' x 60')
- Warehouse, reception area, two offices, conference or file room, kitchen/break-room, restroom in office and in warehouse, storage closets
- 10' x 10' overhead door and man-door
- Ceiling height 16'
- Zoning: C-4 (General Commercial)
- Year Built: 1983
- Ext. Construction: brick & siding
- Int. Construction: wood frame
- Parking: asphalt, lighted, 34 spaces
- Located in a high traffic area on Evansville's eastside—average daily traffic count: 22,407 cars
- Space on Morgan Ave. sign available

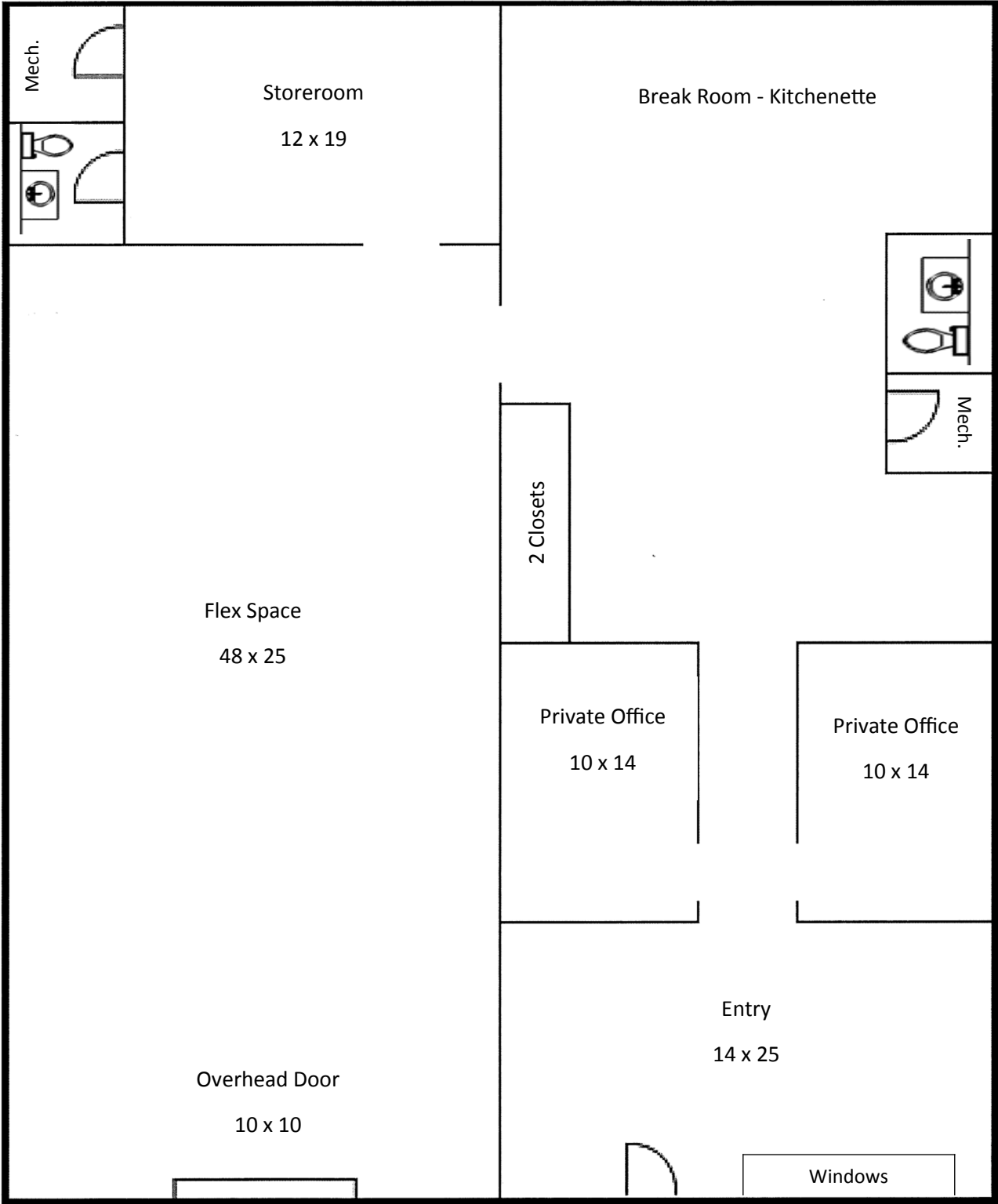
**\$1200 / mo.**  
**Modified Gross**



For more information contact:

Will Smith, Broker  
Hahn Kiefer Real Estate Services  
(812) 477-6980 (O)  
(812) 480-0553 (C)





3816 E. Morgan Ave  
Floor Plan