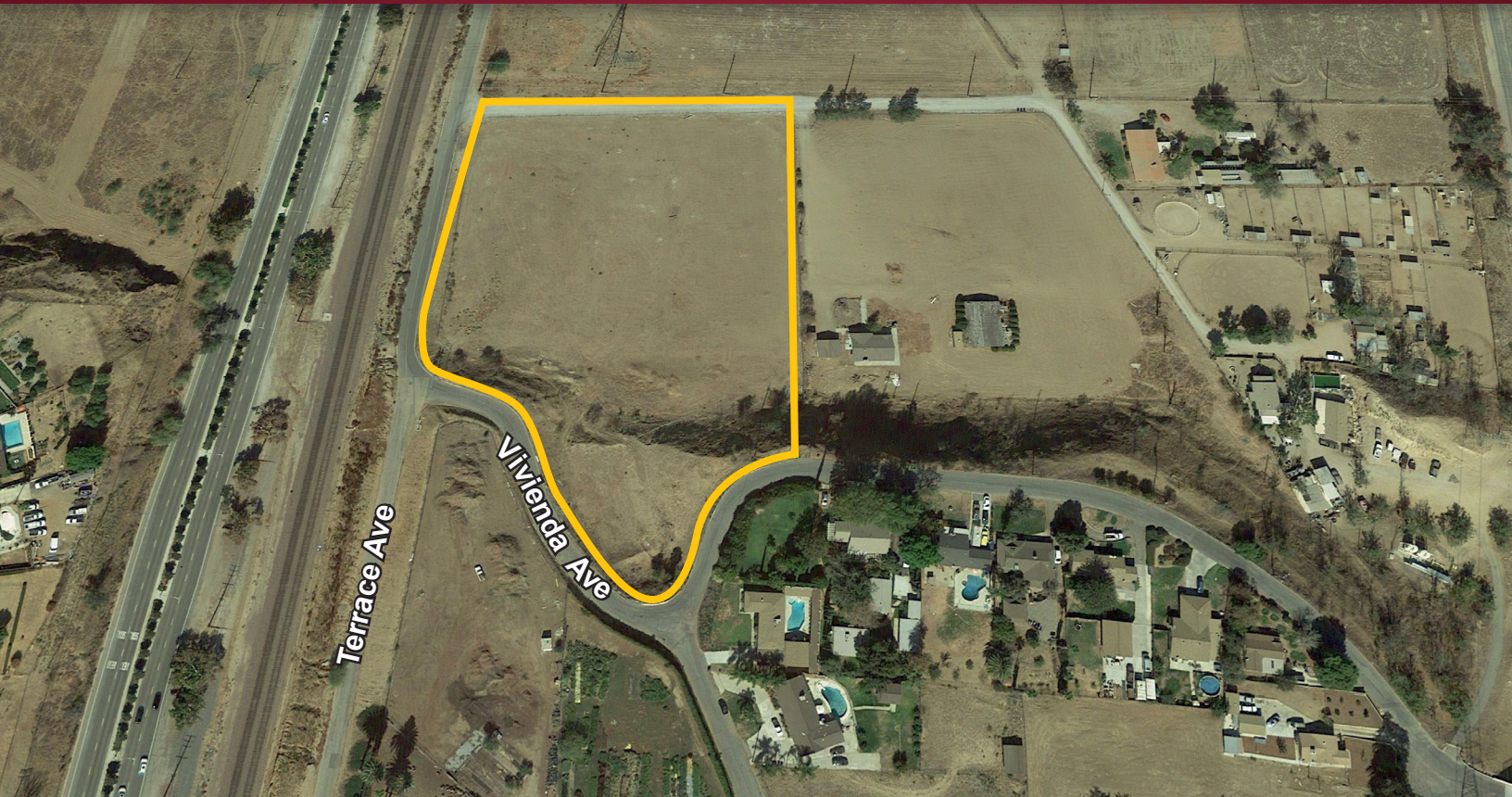


±4.6 ACRE YARD FOR SALE

NEC Terrace Ave. & Vivienda Ave. Grand Terrace, CA



PROPERTY HIGHLIGHTS

±4.6 Acre Lot

Currently M2 Zoning

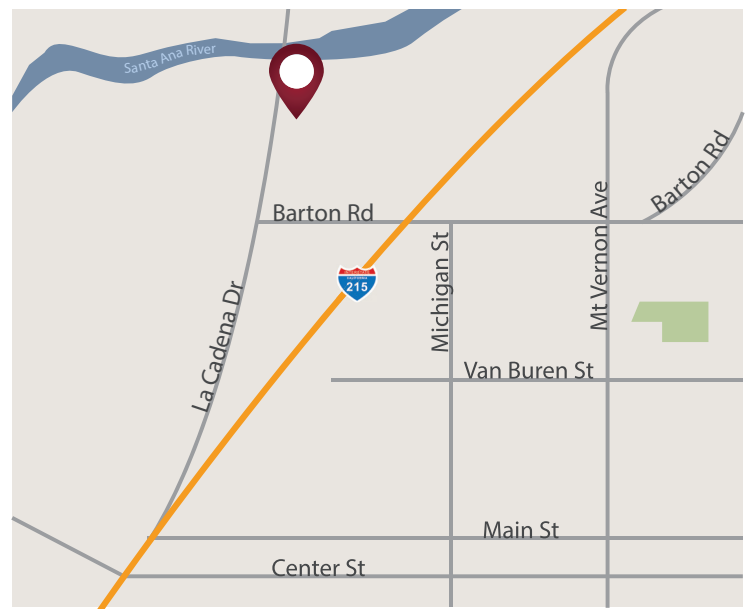
Proposed Use is Agricultural or Light Industrial

Power, Water, Telephone, Utilities Nearby

Level Lot - Slope on South Portion

APN: 0275-191-03

Close to Proximity to the 215 Freeway



Vic Onorio

BRE#: 00932747 // 951.276.3623

vonorio@lee-associates.com