

Prime Hard Corner South Tampa Location FOR LEASE



**3418 W. Swann Avenue
Tampa, FL 33609**



SIZE:	3,648 SF
PROPERTY TYPE:	Specialty Retail / Office
PARKING SPACES:	15
TRAFFIC COUNT:	40,000 Cars Per Day
DATE AVAILABLE:	June 2017
LEASE TERM:	5 - 10 Years
RENTAL RATE:	\$23 NNN

IPG, Inc.

Licensed Real Estate Broker

2202 N. Westshore Blvd. • Suite 200 • Tampa, FL 33607

FOR MORE INFORMATION CONTACT:

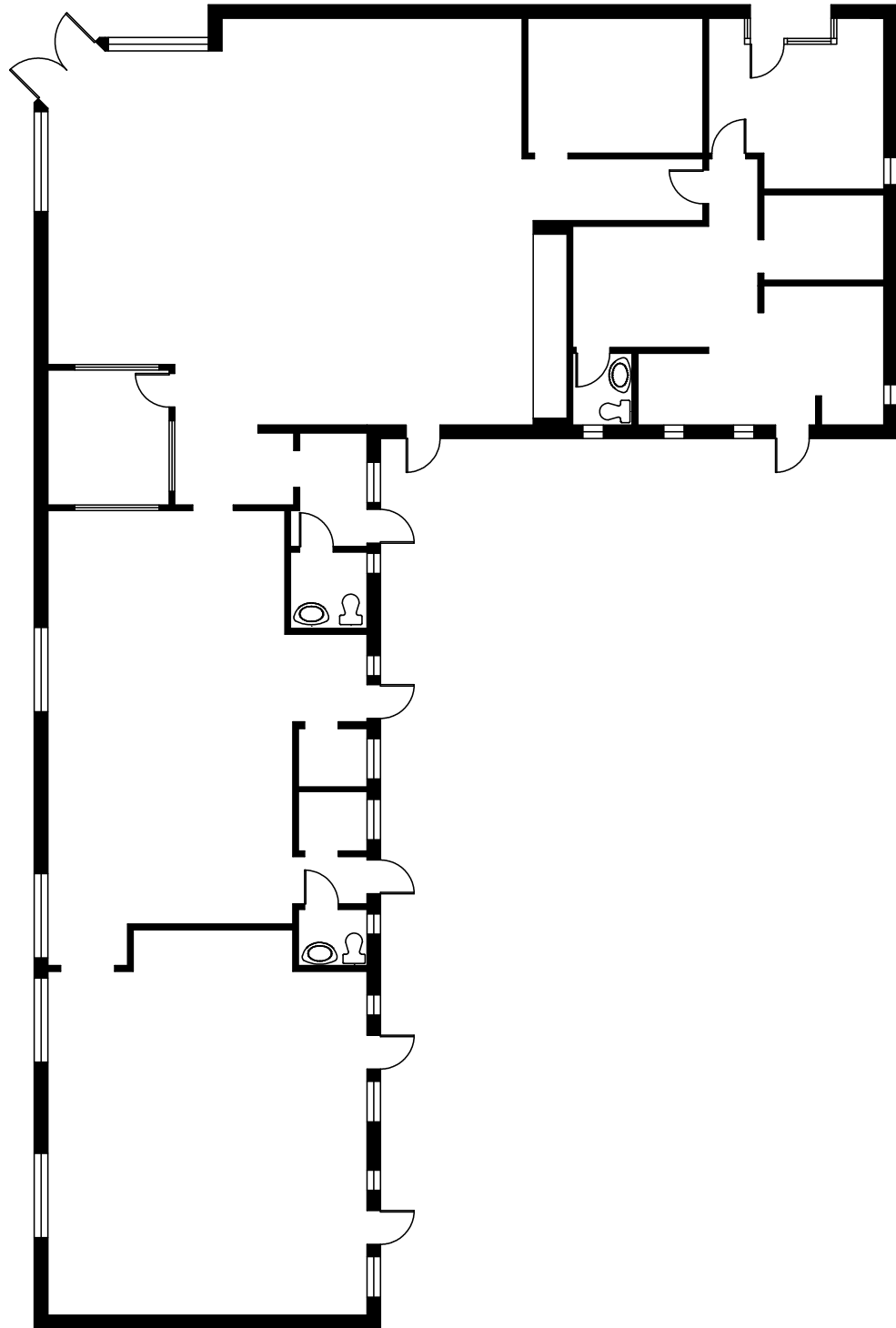
JOHN AYERS, CCIM

Cell: 813.690.6539 jayers@ccim.net

www.tampaindustrialrealestate.com

No warranty or representation, expressed or implied, is made as to the accuracy of the information contained herein, and same is submitted subject to errors, omissions, change of price, rental or other conditions, withdrawal without notice, and to any special listing conditions imposed by our principals.

**3418 W. Swann Avenue
Tampa, FL 33609**



IPG, Inc.

Licensed Real Estate Broker

2202 N. Westshore Blvd. • Suite 200 • Tampa, FL 33607

FOR MORE INFORMATION CONTACT:

JOHN AYERS, CCIM

Cell: 813.690.6539 jayers@ccim.net

www.tampaindustrialrealestate.com

No warranty or representation, expressed or implied, is made as to the accuracy of the information contained herein, and same is submitted subject to errors, omissions, change of price, rental or other conditions, withdrawal without notice, and to any special listing conditions imposed by our principals.