



## 305 MADISON AVENUE

Morristown, New Jersey 07960

### The Premises

Four-story 274,490 RSF building, located in Morristown, New Jersey. This modern building provides tenants with a variety of amenities including fitness center, coffee/smoothie bar, auditorium and conference center, outdoor patio and rooftop space, covered parking, and security.

### Key Features

- Building fully renovated in 2018
- Fully furnished & wired (adjustable height desks)
- Size: 5,000 – 45,000 RSF
- Term: Flexible



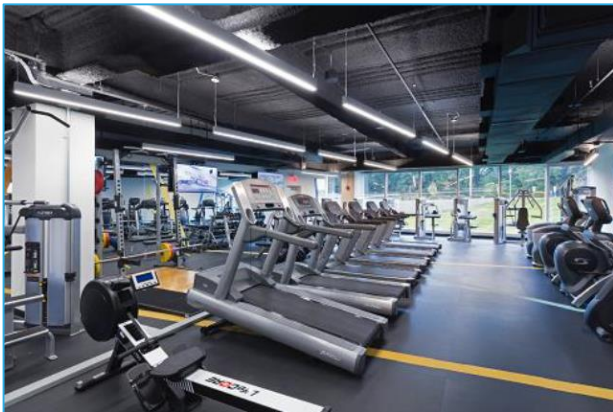


# Building Amenities



- Full-Service Cafeteria
- Fitness Center
- Coffee/Smoothie Bar
- Auditorium and Conference Center
- Outdoor Patio and Rooftop Space
- Covered Parking
- Security
- Penthouse Event Space

## Fitness Center



## Coffee/Smoothie Bar





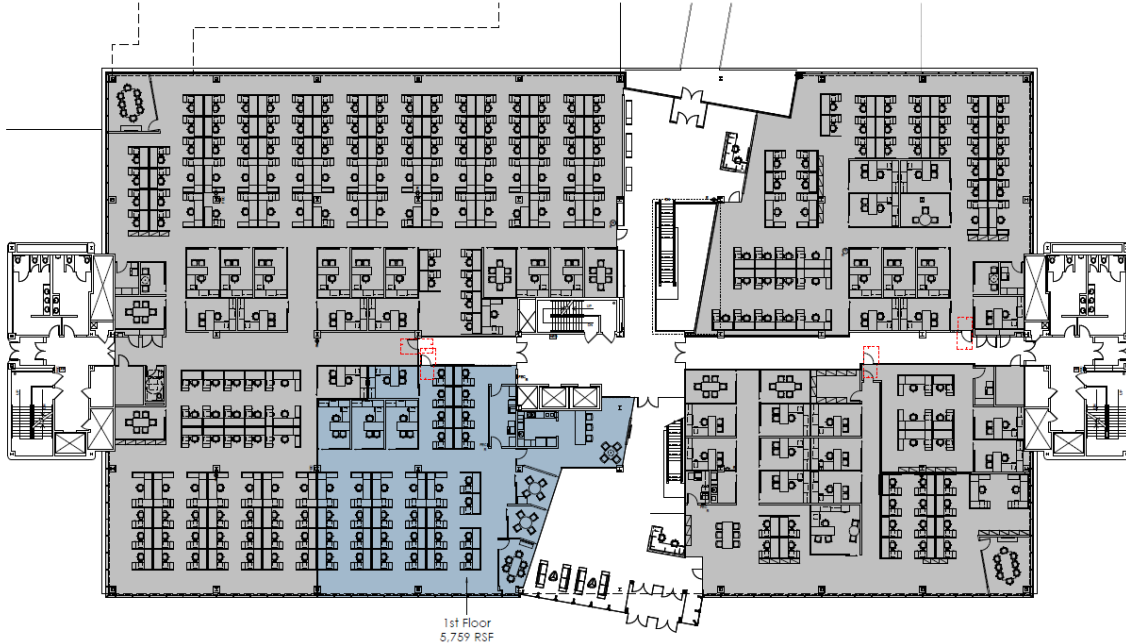
# Floor Plans

## Garden Level





# Floor Plans



First  
Floor  
5,759 RSF

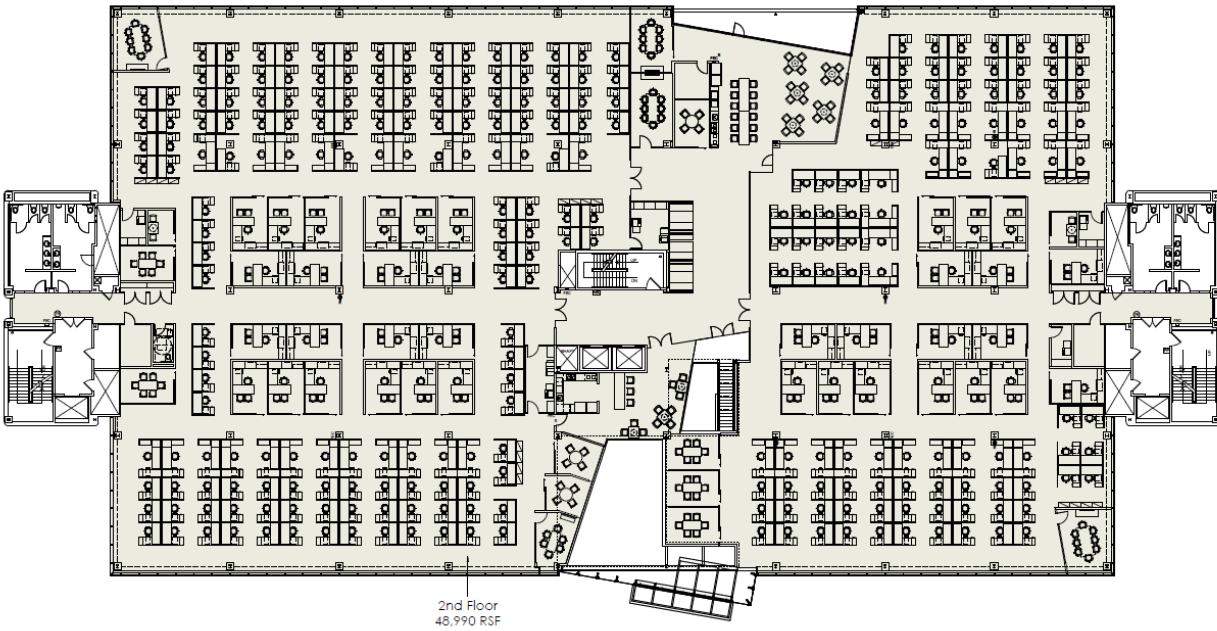


First  
Floor  
10,830 RSF



# Floor Plans

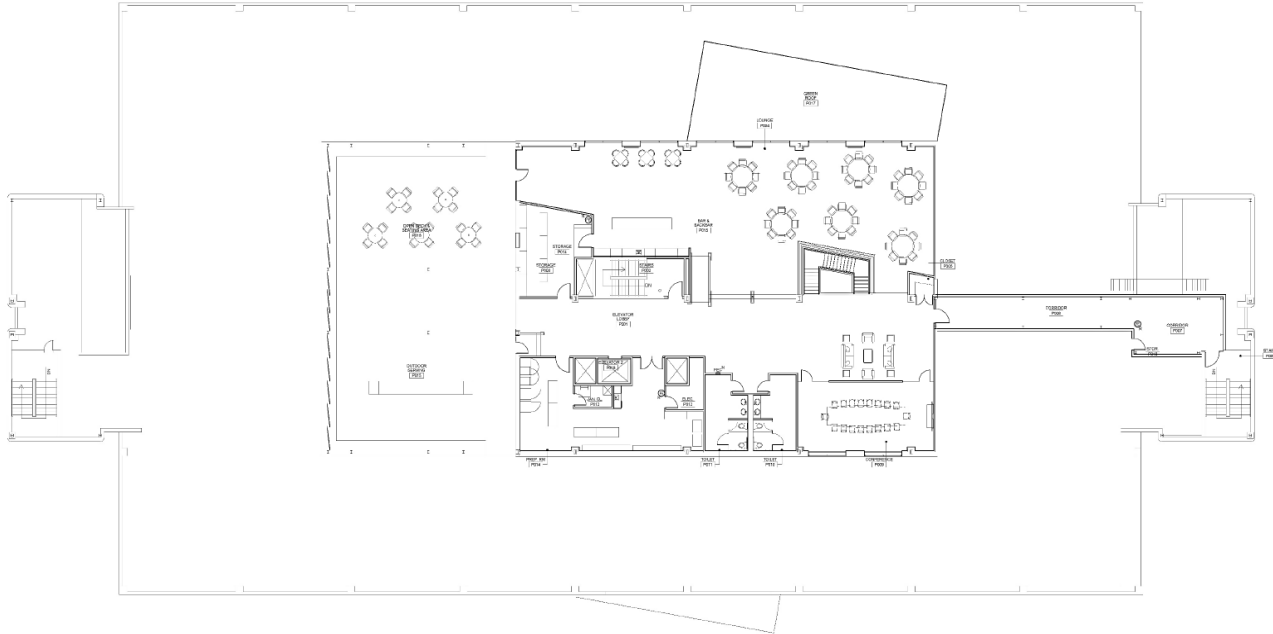
First  
Floor  
26,174 RSF



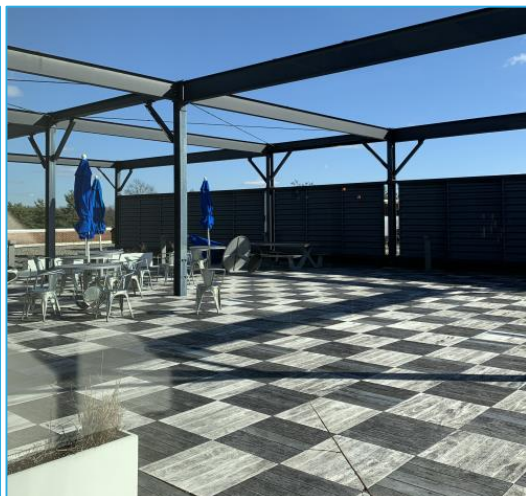
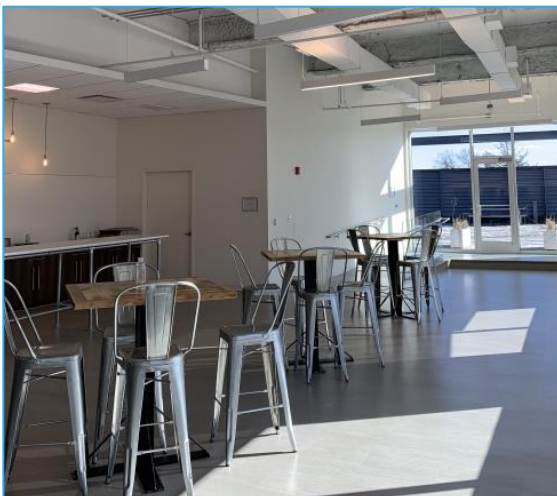
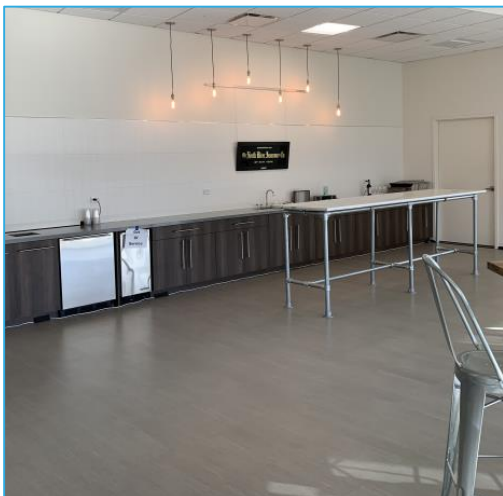
Second  
Floor  
48,990 RSF

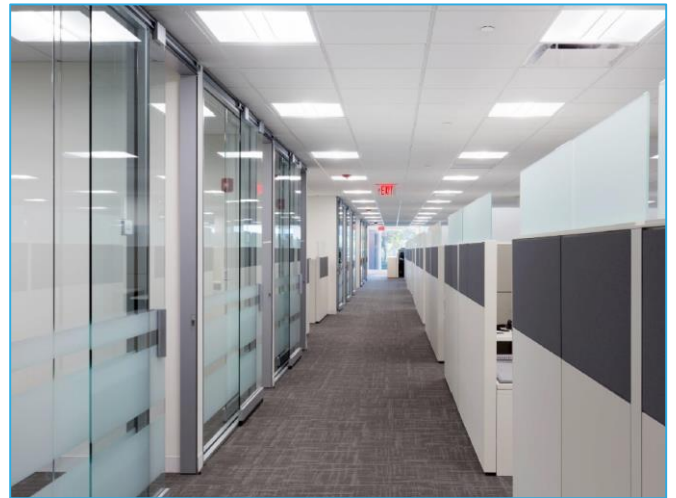
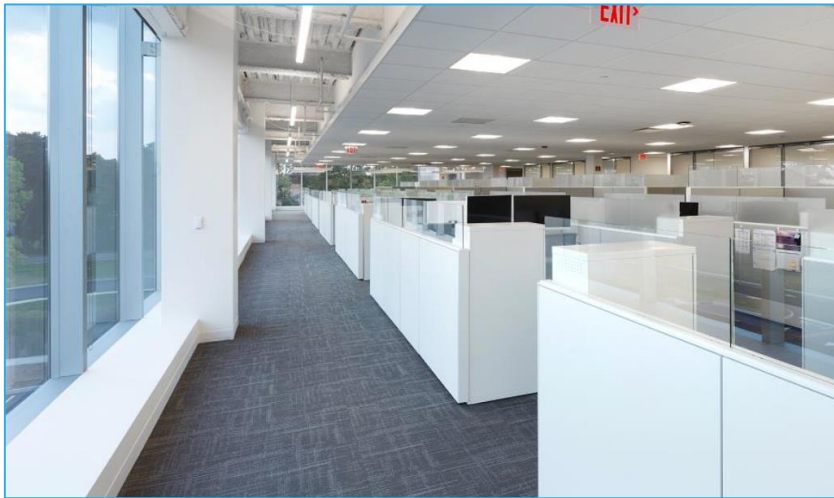


# Floor Plans



Penthouse





## PLEASE CONTACT:

### **Conor Dolan**

Senior Associate  
+1 201 712 5673  
conor.dolan@cbre.com

### **Eddie Sisca**

Senior Associate  
+1 201 712 5865  
eddie.sisca@cbre.com

© 2020 CBRE, Inc. All rights reserved. This information has been obtained from sources believed reliable, but has not been verified for accuracy or completeness. You should conduct a careful, independent investigation of the property and verify all information. Any reliance on this information is solely at your own risk. CBRE and the CBRE logo are service marks of CBRE, Inc. All other marks displayed on this document are the property of their respective owners, and the use of such logos does not imply any affiliation with or endorsement of CBRE. Photos herein are the property of their respective owners. Use of these images without the express written consent of the owner is prohibited.