

FOR LEASE

Pacific Business Park

219 Frontage Road N
Suite A, Pacific, WA



- 12,076 SF (2,120 SF Office)
 - 1,280 SF - 1st Floor Office
 - 840 SF - 2nd Floor Office
- 2 Grade Level Doors (13' x 16')
- 16' -20' Clear Height
- \$0.65/\$0.95, NNN
- Ample Parking
- Available with 60 days' notice
- Immediate access to SR-167

NEWMARK

THAD MALLORY, SIOR
425.362.1410
thad.mallory@ngkf.com

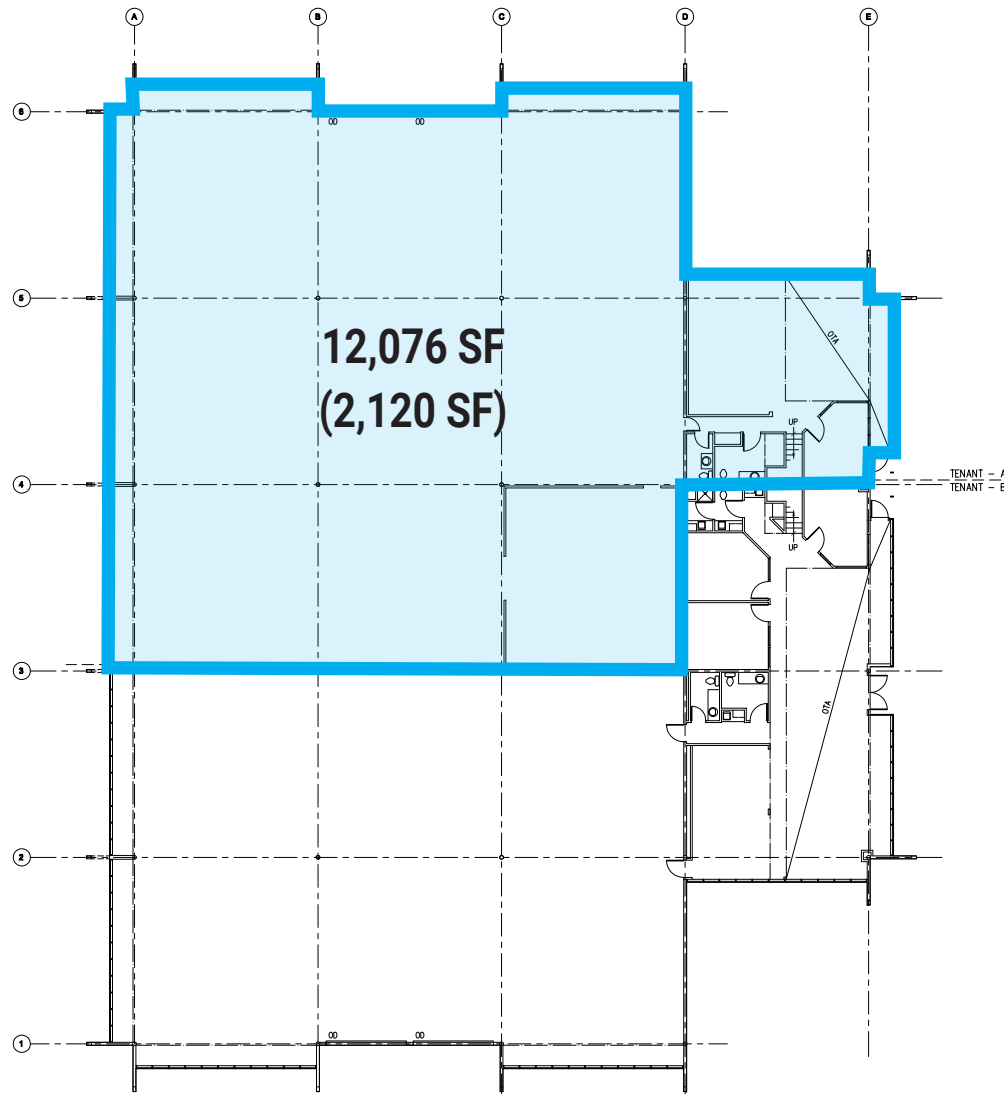
CAM WARREN
425.362.1395
cam.warren@ngkf.com

MORGAN RICHEY
425.362.1409
morgan.richey@ngkf.com

FOR LEASE

Pacific Business Park

219 Frontage Road N
Suite A, Pacific, WA



NEWMARK

THAD MALLORY, SIOR
425.362.1410
thad.mallory@ngkf.com

CAM WARREN
425.362.1395
cam.warren@ngkf.com

MORGAN RICHEY
425.362.1409
morgan.richey@ngkf.com

FOR LEASE Pacific Business Park

219 Frontage Road N
Suite A, Pacific, WA



25 Minutes
SeaTac Int'l Airport
35 Minutes
Port of Seattle

20 Minutes
Port of Tacoma

219 Frontage Rd N

NEWMARK

The information contained herein has been obtained from sources deemed reliable but has not been verified and no guarantee, warranty or representation, either express or implied, is made with respect to such information. Terms of sale or lease and availability are subject to change or withdrawal without notice.

THAD MALLORY, SIOR
425.362.1410
thad.mallory@ngkf.com

CAM WARREN
425.362.1395
cam.warren@ngkf.com

MORGAN RICHEY
425.362.1409
morgan.richey@ngkf.com