



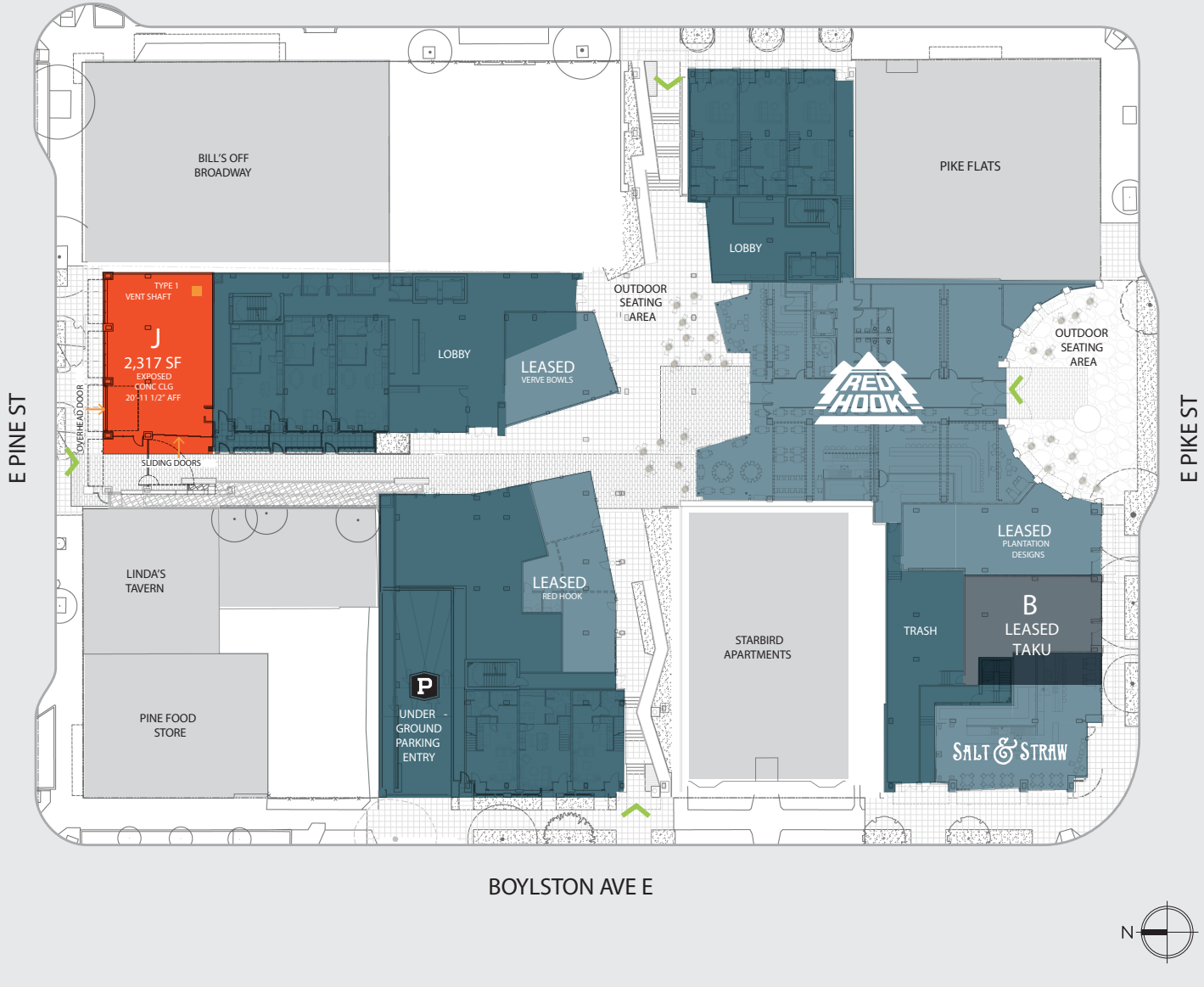
RETAIL / RESTAURANT SPACE NOW AVAILABLE

One space remains! Pike Motorworks is home to over 200 of the finest luxury apartments in Seattle, in one of the city's hottest retail locations—Capitol Hill's Pike / Pine corridor. The signature Pike Street entry harkens back to historic auto row with towering ceilings and exposed timbers. The through-block walkways buzz day and night with celebrated local eats, watering holes and neighborhood shops, all surrounded by ample outdoor seating. Pike Motorworks is a mix of old and new. A place to eat, drink, and people-watch. A place to feel connected.

PIKE / PINE AMENITIES

- Retail
- Food & Drug
- Dining
- Arts & Ent.
- Services
- Transportation
- Nightlife

HARVARD AVE E



BOYLSTON AVE E

AVAILABLE RETAIL

Retail J 2,317 SF

PROJECT SCHEDULE

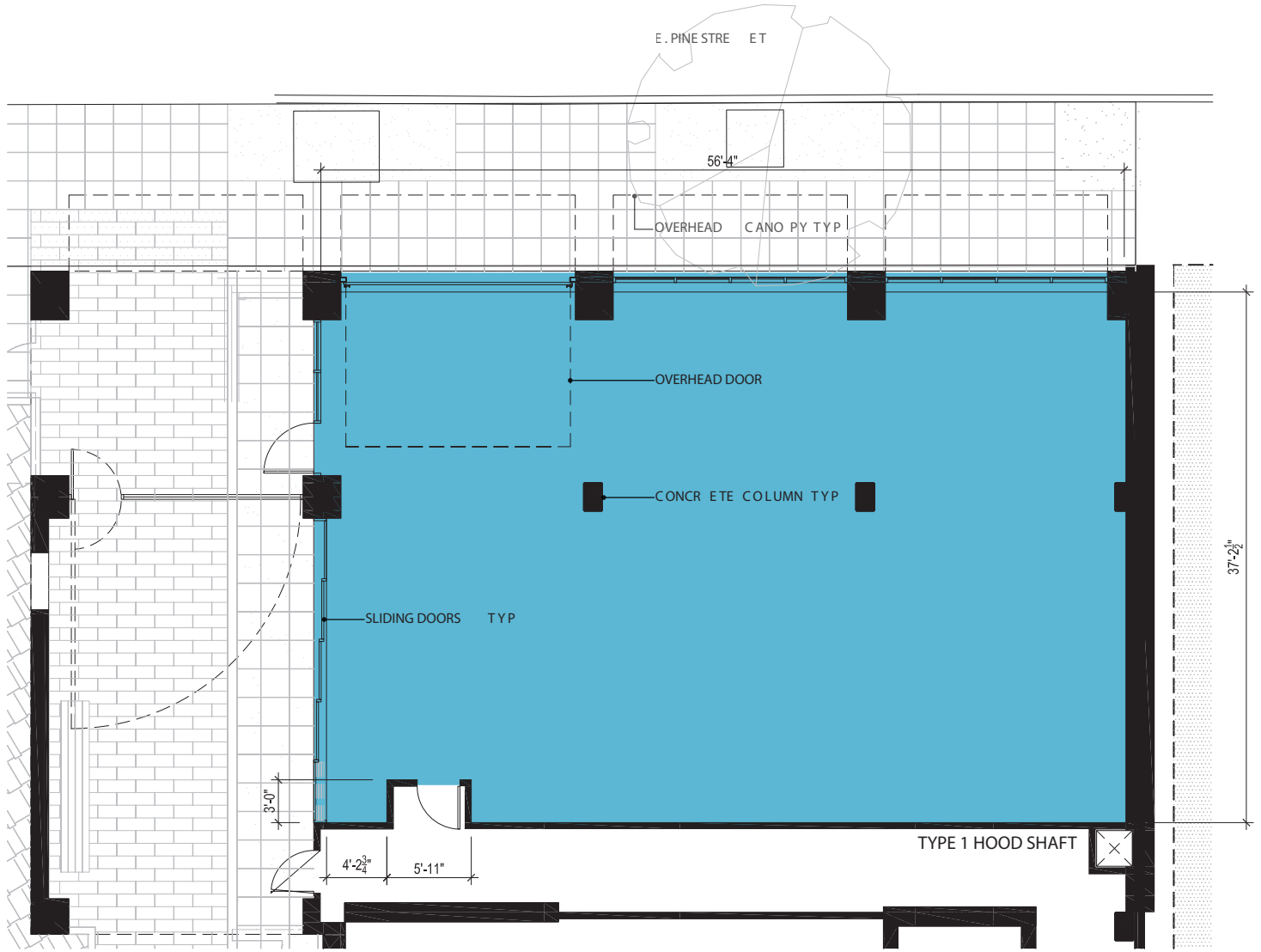
Available now!

PROJECT HIGHLIGHTS

- > Type 1 hood shaft installed
- > On-site garage parking for retail customers / residents
- > Excellent signage opportunities
- > Easily configurable retail spaces
- > Highly activated thru-block pedestrian connectors with courtyard seating
- > Grand portals to interior courtyard

SUITE J

- > Retail J has large operable storefront windows with large garage roll-up door and double slider storefront providing unique outdoor connection
- > 21 ft ceilings
- > Covered outdoor seating area



RETAIL J

2,317 SF

