



FIVE CORNERS PROFESSIONAL PLAZA

SW 160th Street & Ambaum Blvd, Burien, WA 98148

FOR
LEASE



**DRIVE-THRU ATM/
COFFEE STAND
OPPORTUNITY**



SW 160th St

TIM WEBER
(253) 471-5502
tweber@firstwesternproperties.com

DON WHITTLES
(253) 471-5509
dwhittles@firstwesternproperties.com

JEREMIAH DURR
(253) 471-5506
jdurr@firstwesternproperties.com

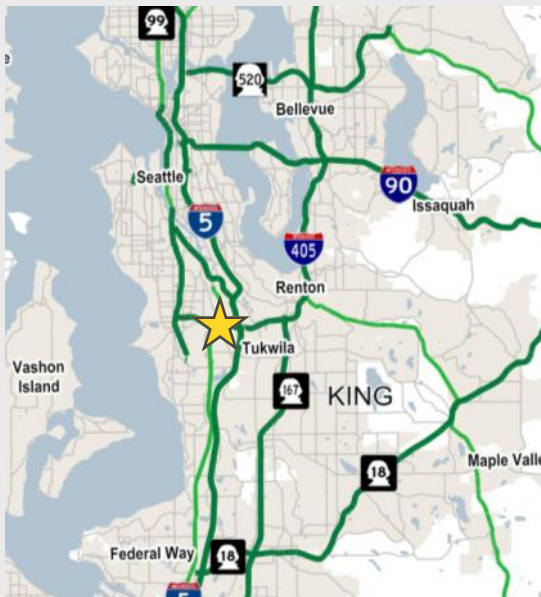
FIVE CORNERS PROFESSIONAL PLAZA

SW 160th Street & Ambaum, Burien, WA 98148

FOR
LEASE

LOCATION DETAILS

- Located at the NE corner of SW 160th Street and Ambaum Blvd
- Close proximity to Highline Hospital
- Over 40,000 CPD at 160th Street and 1st Avenue S



PROPERTY HIGHLIGHTS

- Single drive-thru bank ATM or coffee shop opportunity
- \$1,900.00 per month, gross
- Immediate occupancy
- Drive-thru curbs and drive aisle already existing
- Entrance is on the same side of road with the flow of heavy morning traffic to Highline Medical Complex
- Close to large national retailers, Albertson's, Trader Joe's, Verizon Wireless, Papa Murphy's, McDonalds, Wendy's, and Starbucks

NEARBY TENANTS



DEMOGRAPHICS

	Mile 1	Mile 3	Mile 5
Population	12,107	85,520	184,759
Average HH Income	\$64,541	\$64,665	\$63,747
Daytime Population	12,454	83,295	200,192



First Western Properties - Tacoma, Inc.
6402 Tacoma Mall Blvd, Tacoma, WA 98409
P (253) 472 - 0404 F (253) 472 - 0541

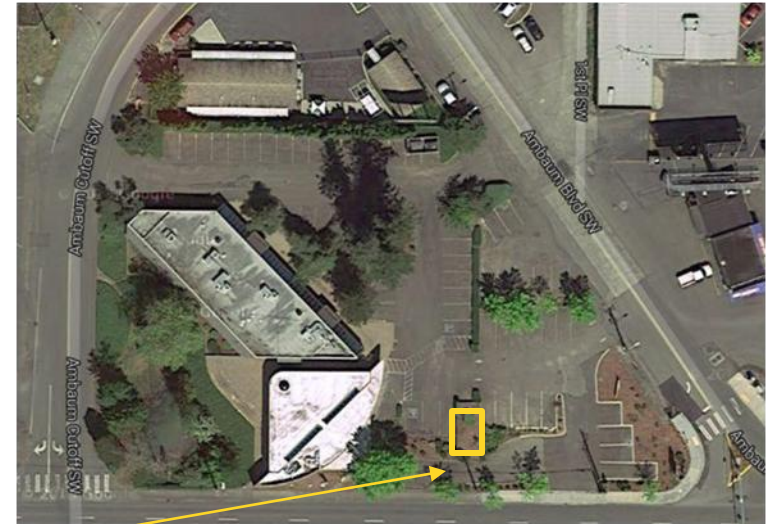
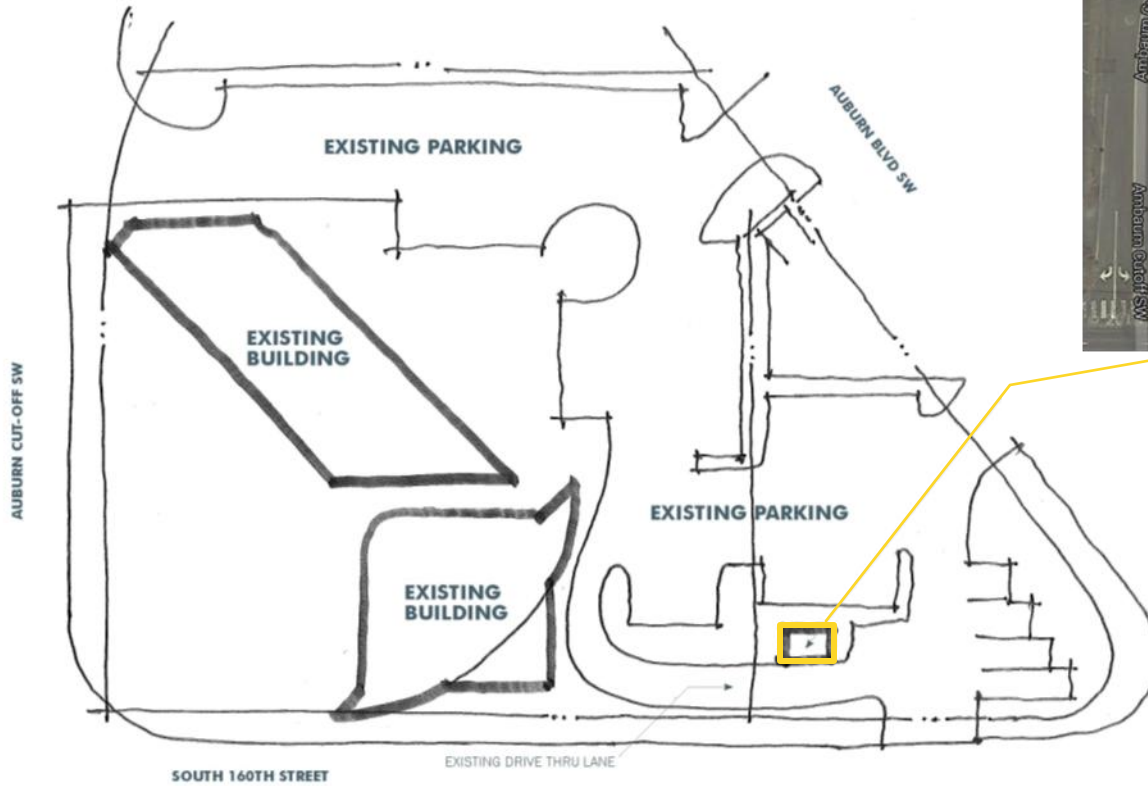
www.fwp-inc.com

FIVE CORNERS PROFESSIONAL PLAZA

SW 160th Street & Ambaum Blvd, Burien, WA 98148

FOR
LEASE

Site Plan



First Western Properties - Tacoma, Inc.
6402 Tacoma Mall Blvd, Tacoma, WA 98409
P (253) 472 - 0404 F (253) 472 - 0541

www.fwp-inc.com

FIVE CORNERS PROFESSIONAL PLAZA

SW 160th Street & Ambaum Blvd, Burien, WA 98148

FOR
LEASE



First Western Properties - Tacoma, Inc.
6402 Tacoma Mall Blvd, Tacoma, WA 98409
P (253) 472 - 0404 F (253) 472 - 0541

www.fwp-inc.com