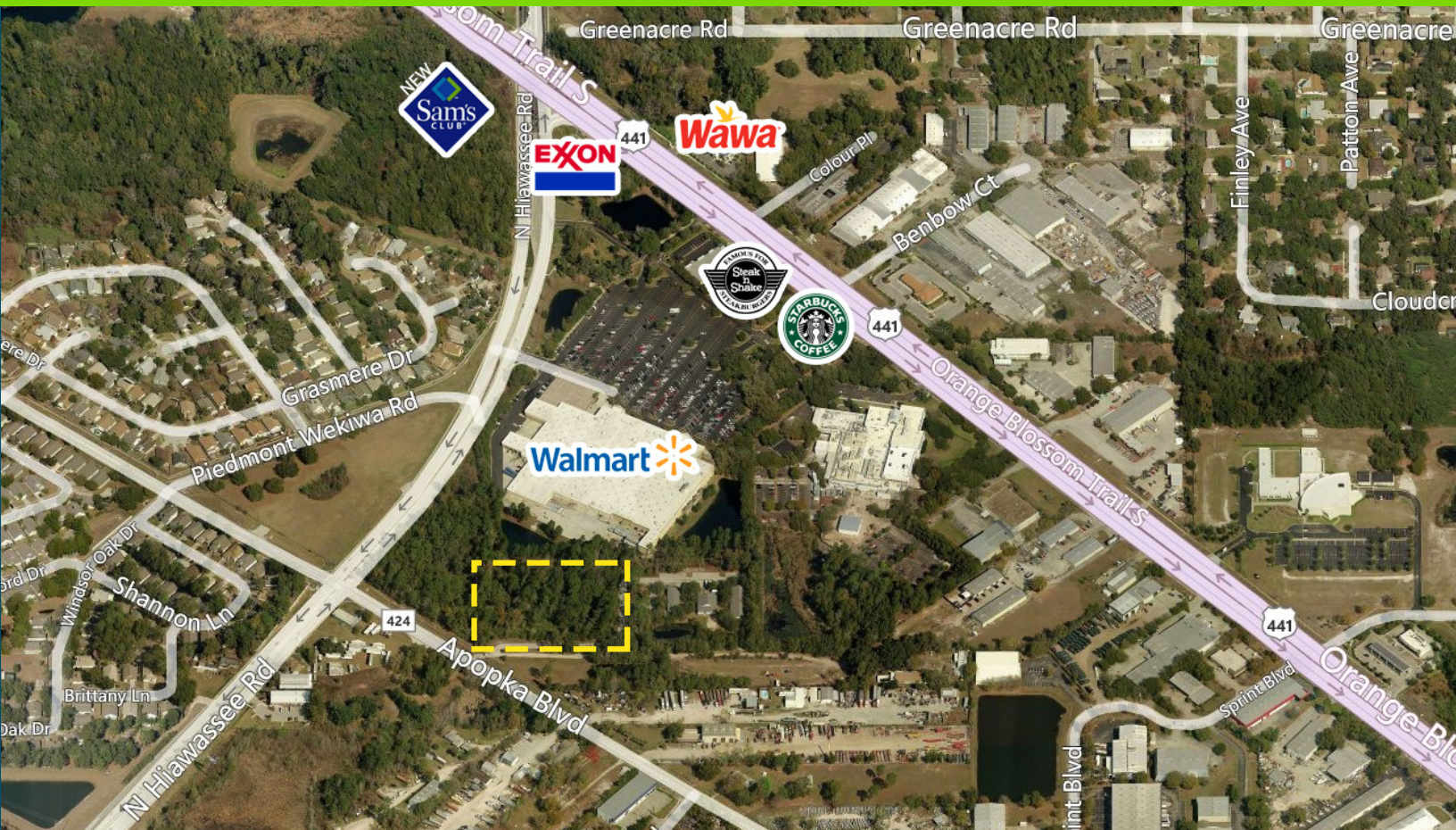
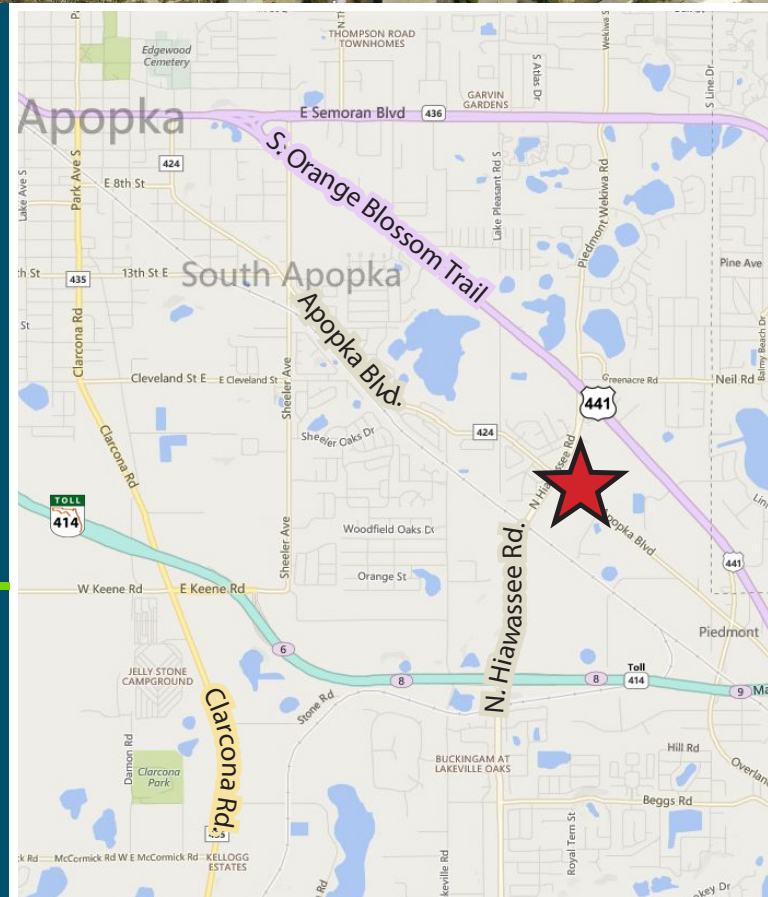


# 3.75 Acres For Sale



## 3.75 Acre Parcel Apopka Blvd. | Apopka, FL

- Liberally zoned, wide range of accepted uses
- Growing commercial and residential corridor
- Access on Apopka Blvd.
- Adjacent to Walmart, new Sam's Warehouse
- Environmental Assessment Completed 2015
- **Asking Price: \$3.50/SF**



**BOB HOLD**  
407-691-0505  
bhold@holdthyssen.com

301 S New York Ave.  
Suite 200  
Winter Park, FL 32789

[www.holdthyssen.com](http://www.holdthyssen.com)