

# PROVIDENT BUILDING

568 1st Avenue S., Seattle, WA 98104

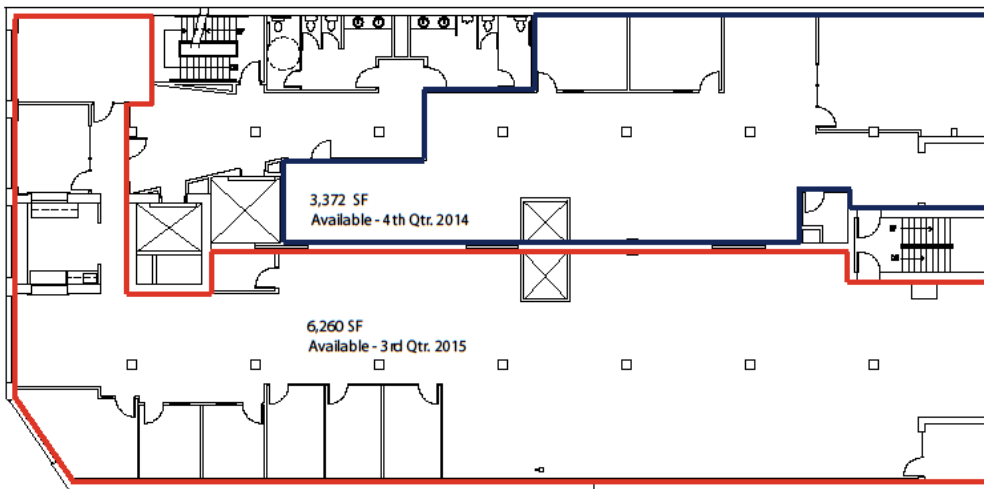
## FOR LEASE

### BUILDING FEATURES

- Completely renovated historic building.
- Located in the vibrant Pioneer Square neighborhood, adjacent to the north lot development and the Seattle sports stadiums.
- I-90/I-5 Access ramps within one block.
- Secure covered parking onsite.
- High-end creative office space build-out, featuring high ceilings, exposed wood beams, concrete and brick elements.
- Substantial electrical & data capacity.
- Roof-top deck with Views of Elliott Bay and the Olympic Mountains.



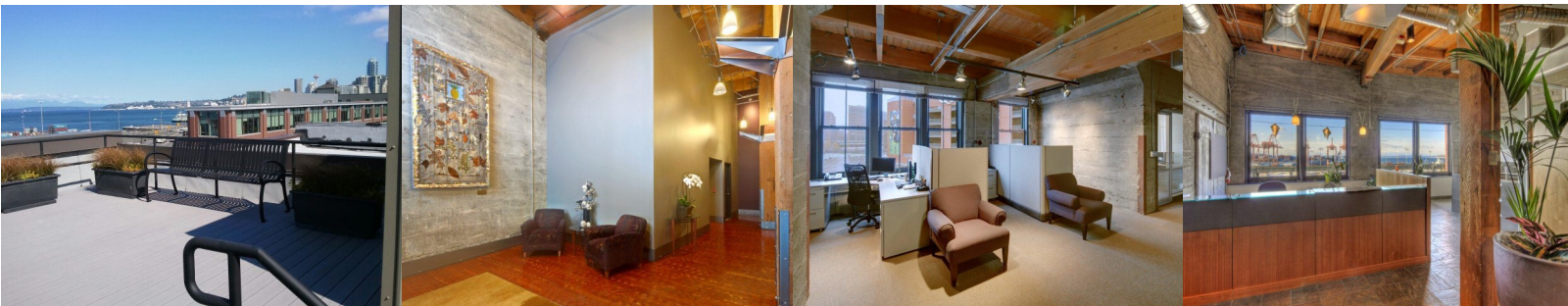
### AVAILABLE SPACES - 3,372 SF; 6,260 SF; 9,632 SF (full floor)



← 3,372 SF. Available 4th Qtr. 2014.

← 6,260 SF. Available 3rd Qtr. 2015.

\* Full floor - 9,632 SF Available 3rd Qtr. 2015.



MARTIN SMITH INC

For further information please contact:

Mark Astor at (206) 521-0548 or [mastor@martinsmith.com](mailto:mastor@martinsmith.com)