

Now Leasing

Capital Station
Shopping Center
50 North DuPont Hwy
Dover, DE 19901

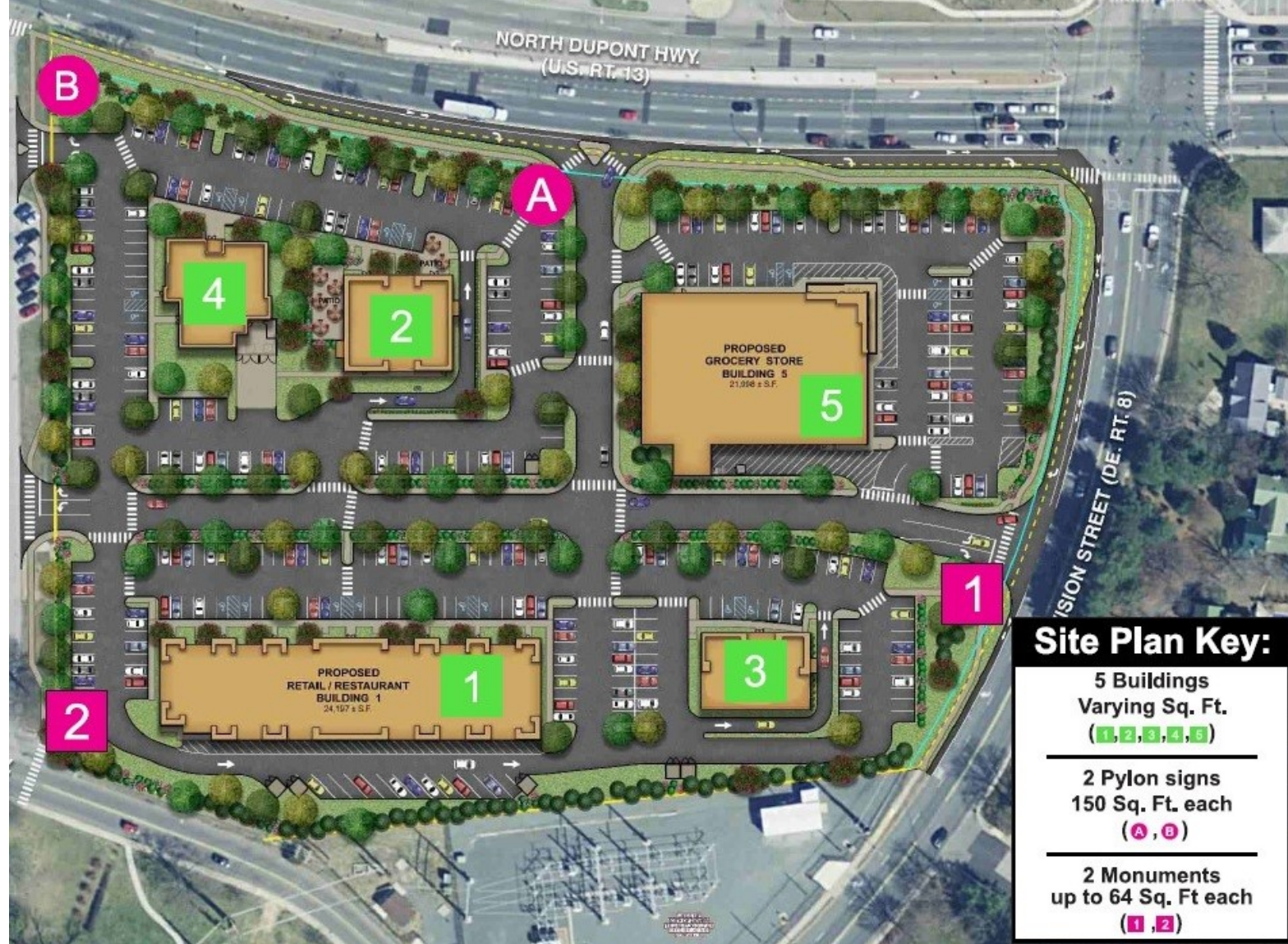
Charles
Rodriguez
302-674-3400
ccrod1@aol.com



46 South State Street
Dover, Delaware 19901

302-674-3400

www.randrcommercialrealty.com



Property Information

New Retail Development in always-growing Dover, DE
Located on the NW corner of N. DuPont Highway/Route 13 and Division Street/Route 8 with access in the back from Kings Highway and on the North side from Maple Parkway.

Signaled intersections at Division St. and DuPont Hwy as well as Division St. and Kings Highway

All information contained herein is believed to be accurate, however was obtained from third parties and R & R Commercial Realty, Inc. does not warrant as to the accuracy submitted, subject to changes or modification without notice. Listing Broker represents the sellers interest.

Suites Available from
1,500—9,100+/- SF

Site Plan Key:

5 Buildings
Varying Sq. Ft.
(1, 2, 3, 4, 5)

2 Pylon signs
150 Sq. Ft. each
(A, B)

2 Monuments
up to 64 Sq. Ft each
(1, 2)

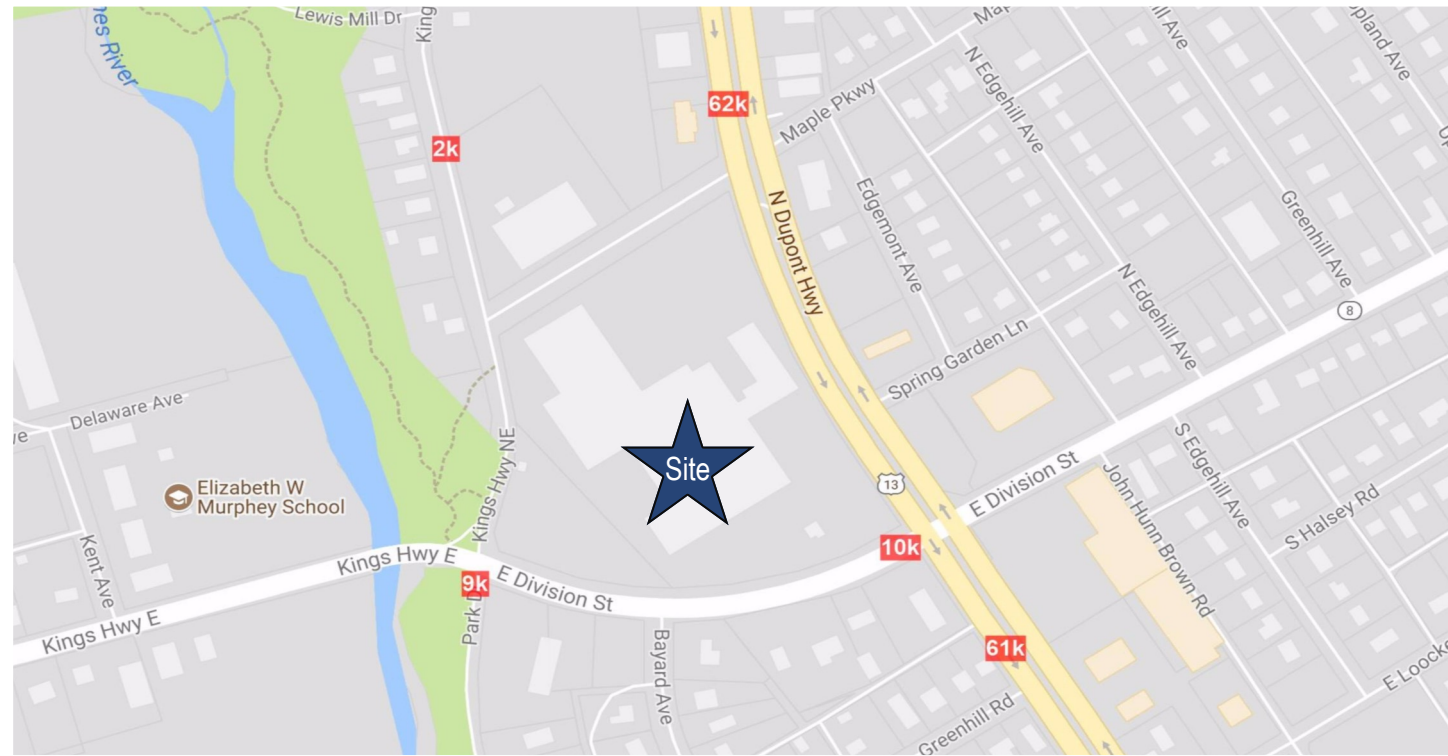
Now Leasing - Capital Station

50 North DuPont Highway, Dover, DE 19904



About the Area

Dover continues to be a thriving community; residential, commercial, industrial, and institutional developments are rising. Dover supports four school districts and five colleges. Wesley College is within walking distance from Capital Station Shopping Center. Dover Downs Speedway is also located on N. DuPont Highway in Dover where there is a Casino that operates 24 hours a day. Dover Downs is also the host to a variety of other events such as, two Nascar Races per year, Firefly music festival, harness racing, multiple concerts, sporting events, various other shows, and multiple local functions.



R&R Commercial Realty ♦ 46 South State Street, Dover, DE 19901 ♦ 302-674-3400 ♦ www.randrcommercialrealty.com

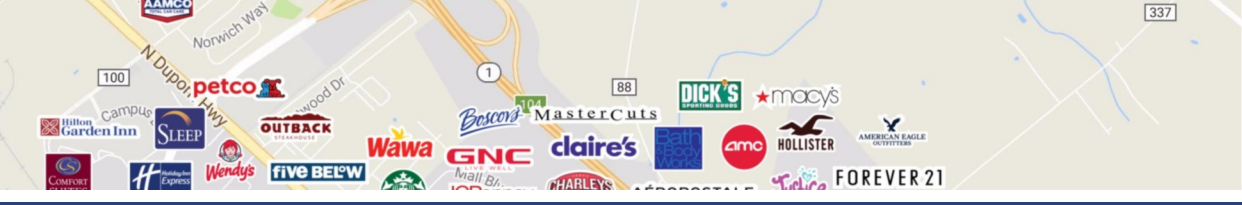
All information contained herein is believed to be accurate, however was obtained from third parties and R & R Commercial Realty, Inc. does not warrant as to the accuracy submitted, subject to changes or modification without notice. Listing Broker represents the sellers interest.

Capital Station

50 North DuPont Highway, Dover, DE 19904

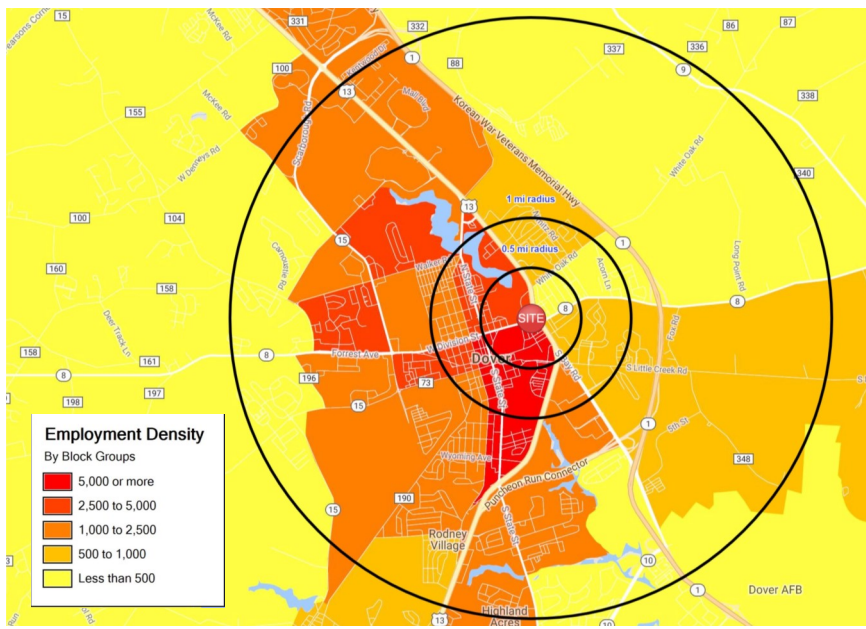
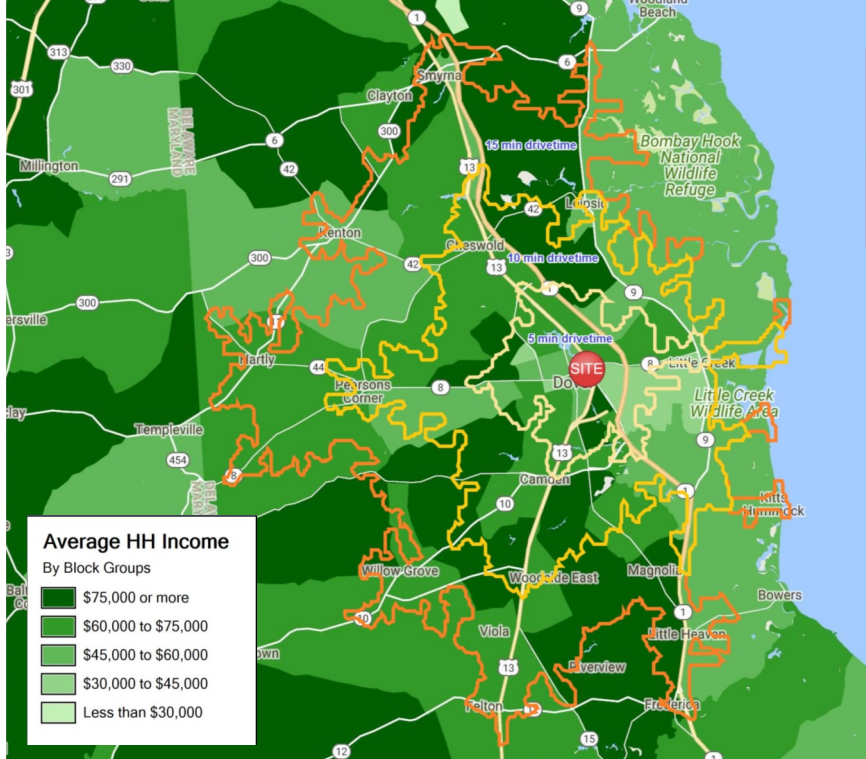


R&R Commercial Realty ♦ 46 South State Street, Dover, DE 19901 ♦ 302-674-3400 ♦ www.randrcommercialrealty.com



Capital Station

50 N. DuPont Hwy, Dover, DE 19901



R&R Commercial Realty ♦ 46 South State Street, Dover, DE 19901 ♦ 302-674-3400 ♦ www.randrcommercialrealty.com

All information contained herein is believed to be accurate, however was obtained from third parties and R & R Commercial Realty, Inc. does not warrant as to the accuracy submitted, subject to changes or modification without notice. Listing Broker represents the sellers interest.

Capital Station

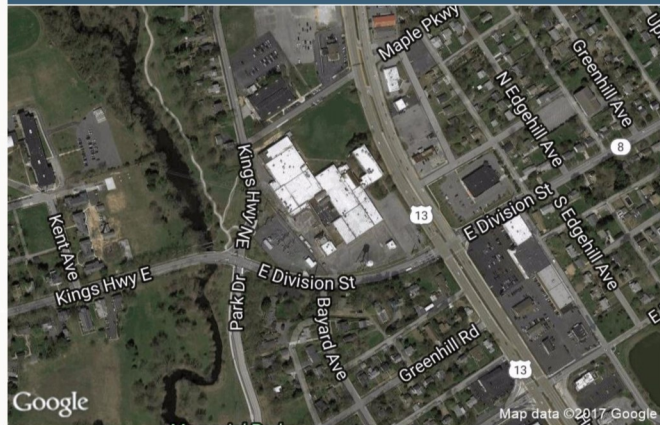
50 North DuPont Highway, Dover, DE 19904



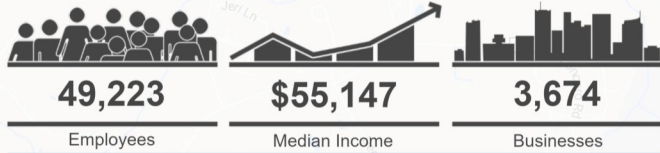
Capital Station

Dover, DE 19901

Aerial View



5 Mile Information

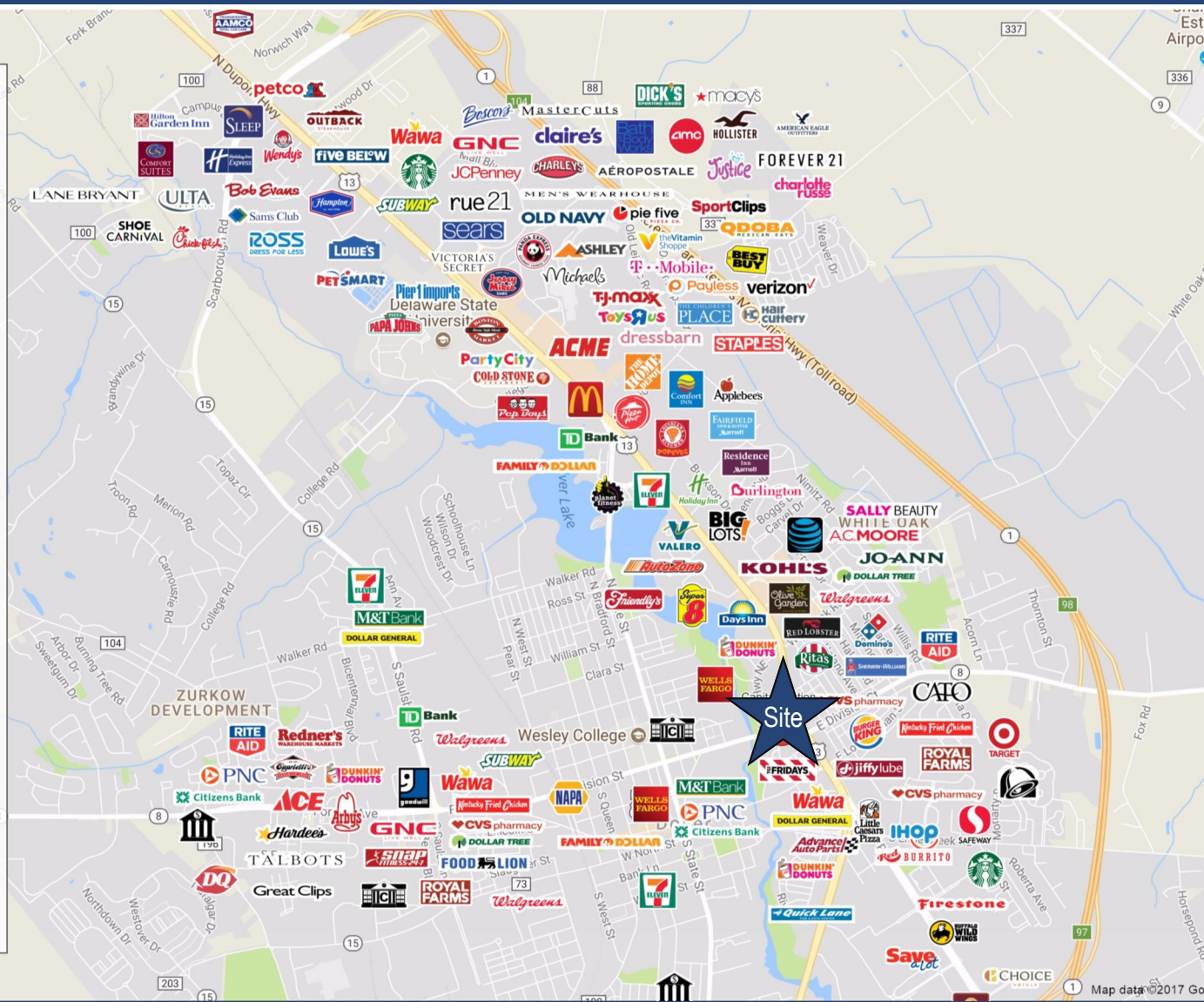


Contact Information



Name **Charlie Rodriguez**
 Email **ccrod1@aol.com**
 Phone **302.674.3400**

©2017, SITES USA Inc. All Rights Reserved. | (480) 491-1112 | 4005 W Chandler Blvd, Chandler AZ 85226
 Logos are for identification purposes only and may be trademarks of their respective companies. This map was produced using data from private and government sources deemed to be reliable. The information herein is provided without representation or warranty.



R&R Commercial Realty ♦ 46 South State Street, Dover, DE 19901 ♦ 302-674-3400 ♦ www.randcommercialrealty.com

All information contained herein is believed to be accurate, however was obtained from third parties and R & R Commercial Realty, Inc. does not warrant as to the accuracy submitted, subject to changes or modification without notice. Listing Broker represents the sellers interest.

Capital Station

50 North DuPont Highway, Dover, DE 19904



R&R Commercial Realty ◆ 46 South State Street, Dover, DE 19901 ◆ 302-674-3400 ◆ www.randrcommercialrealty.com

All information contained herein is believed to be accurate, however was obtained from third parties and R & R Commercial Realty, Inc. does not warrant as to the accuracy submitted, subject to changes or modification without notice. Listing Broker represents the sellers interest.

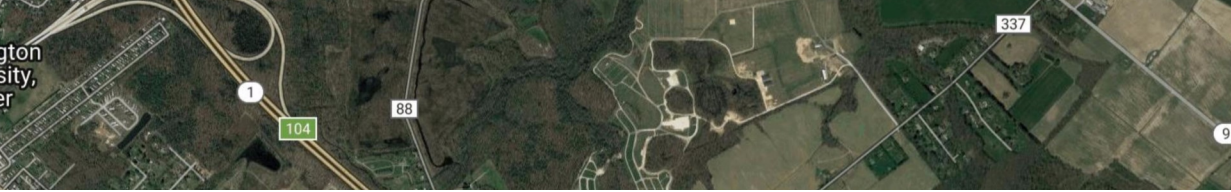
Capital Station

50 North DuPont Highway, Dover, DE 19904



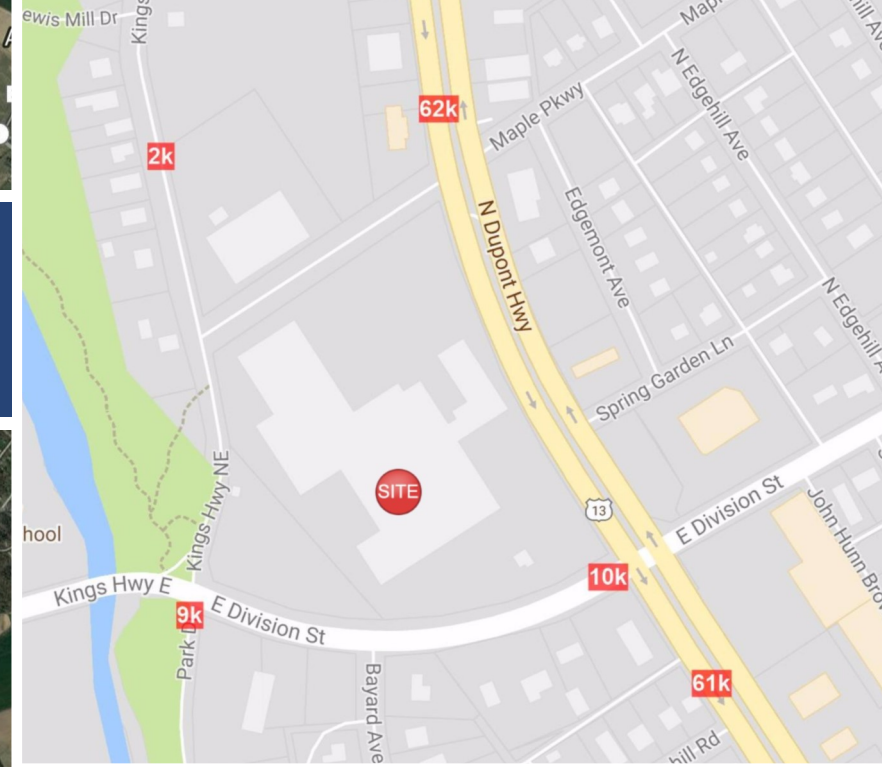
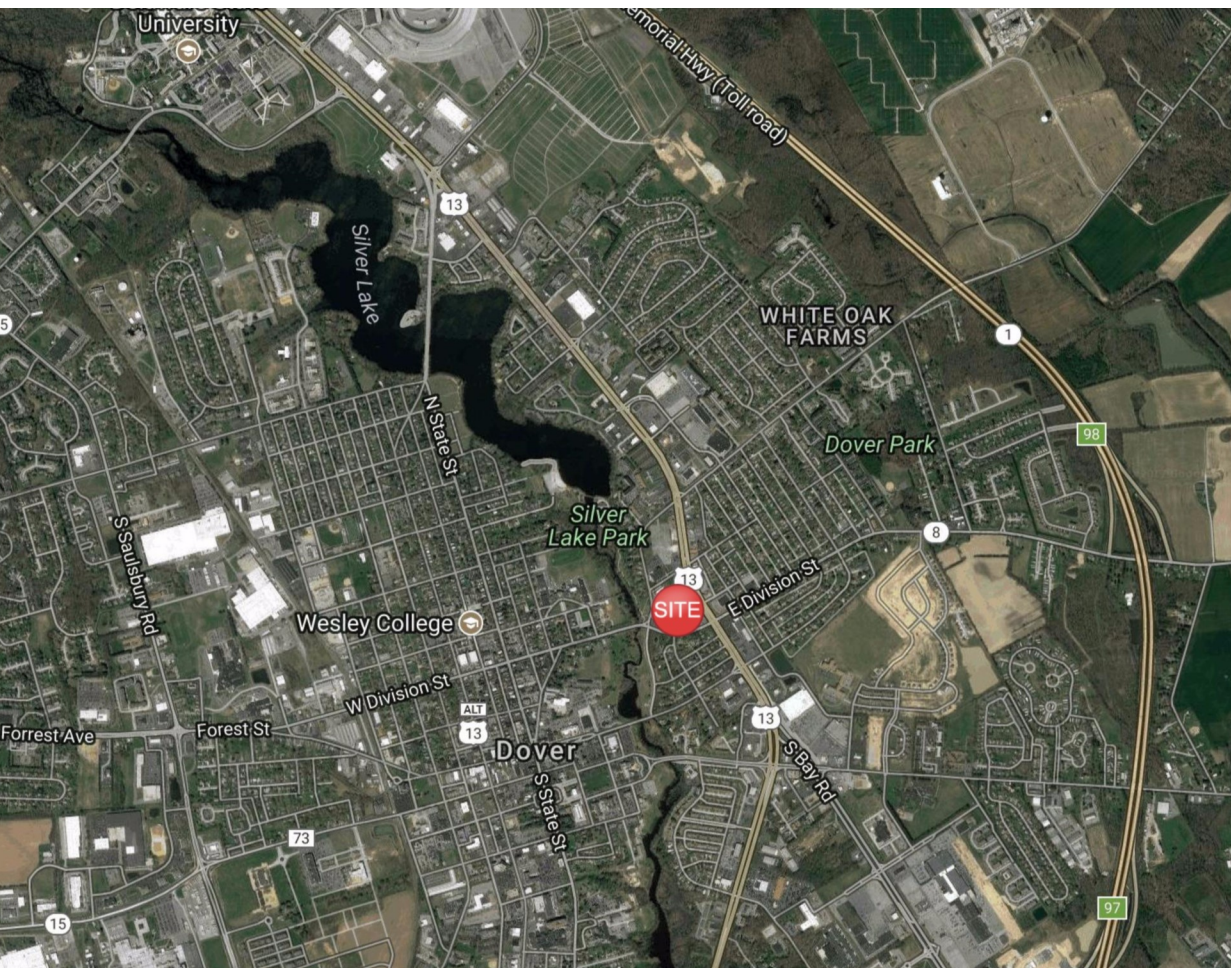
R&R Commercial Realty ◆ 46 South State Street, Dover, DE 19901 ◆ 302-674-3400 ◆ www.randrcommercialrealty.com

All information contained herein is believed to be accurate, however was obtained from third parties and R & R Commercial Realty, Inc. does not warrant as to the accuracy submitted, subject to changes or modification without notice. Listing Broker represents the sellers interest.



Capital Station

50 N. DuPont Hwy, Dover, DE 19901



R&R Commercial Realty ♦ 46 South State Street, Dover, DE 19901 ♦ 302-674-3400 ♦ www.randrcommercialrealty.com

Capital Station

50 N. DuPont Hwy, Dover, DE 19901



R&R Commercial Realty ♦ 46 South State Street, Dover, DE 19901 ♦ 302-674-3400 ♦ www.randrcommercialrealty.com

All information contained herein is believed to be accurate, however was obtained from third parties and R & R Commercial Realty, Inc. does not warrant as to the accuracy submitted, subject to changes or modification without notice. Listing Broker represents the sellers interest.

