

1900 THE ALAMEDA

Available for Lease

Suite 100	±6,937 rsf
Suite 200	±2,769 rsf
Suite 530	±1,044 rsf
Suite 600	±1,904 rsf
Suite 620	±1,029 rsf

- Monument Signage Available
- Building Completely Renovated
- Great Windowline
- 3/1,000 Parking Ratio
- Excellent I-880 Access
- Minutes to Downtown San Jose and Mineta Airport
- Walking Distance to Caltrain College Station



Geri Wong

gwong@ngkf.com

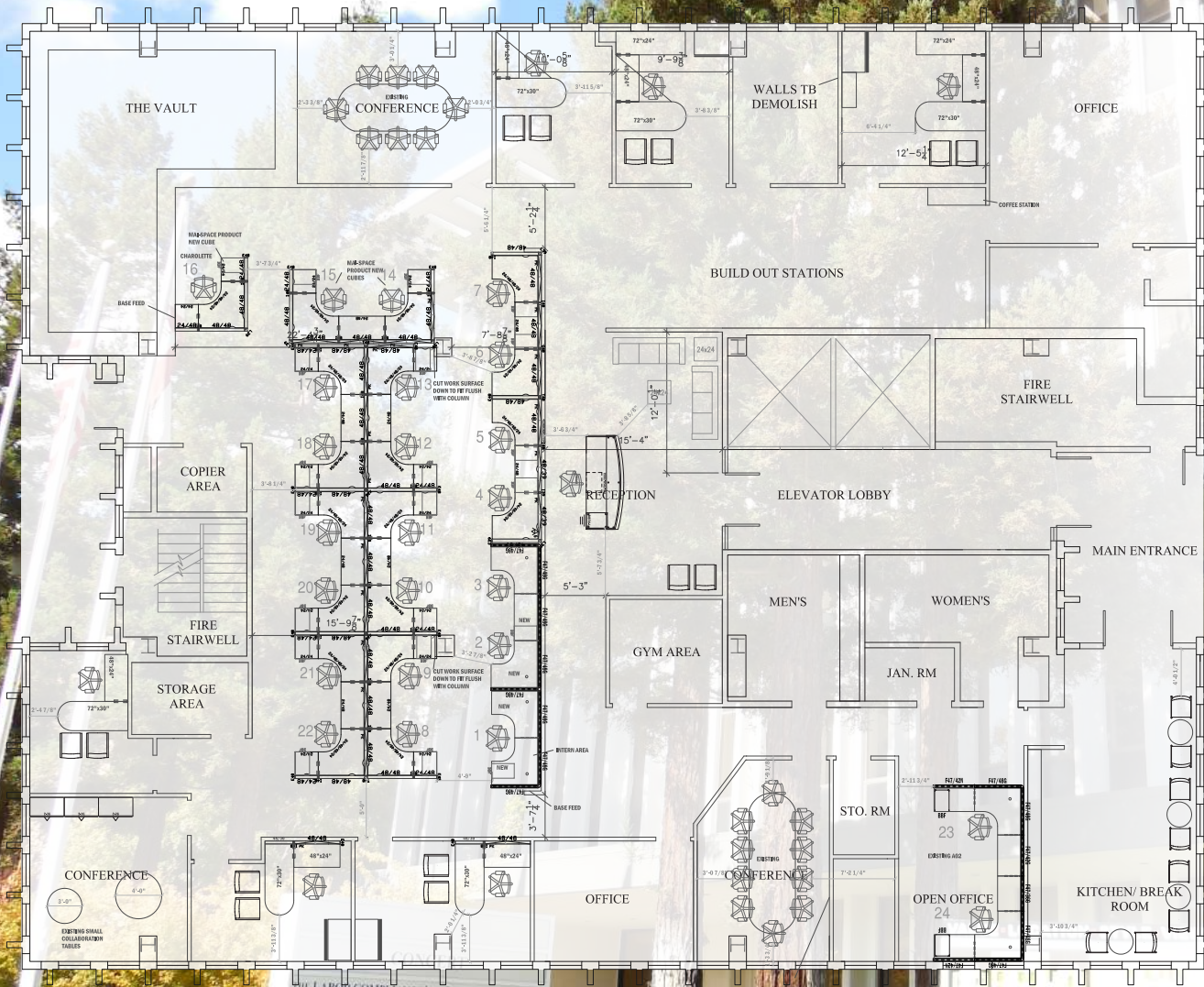
408.987.4134

CA RE License #01142432

1900 THE ALAMEDA

Suite 100 Floor Plan
±6,937 rsf

Furniture layout is for illustration
purposes only.

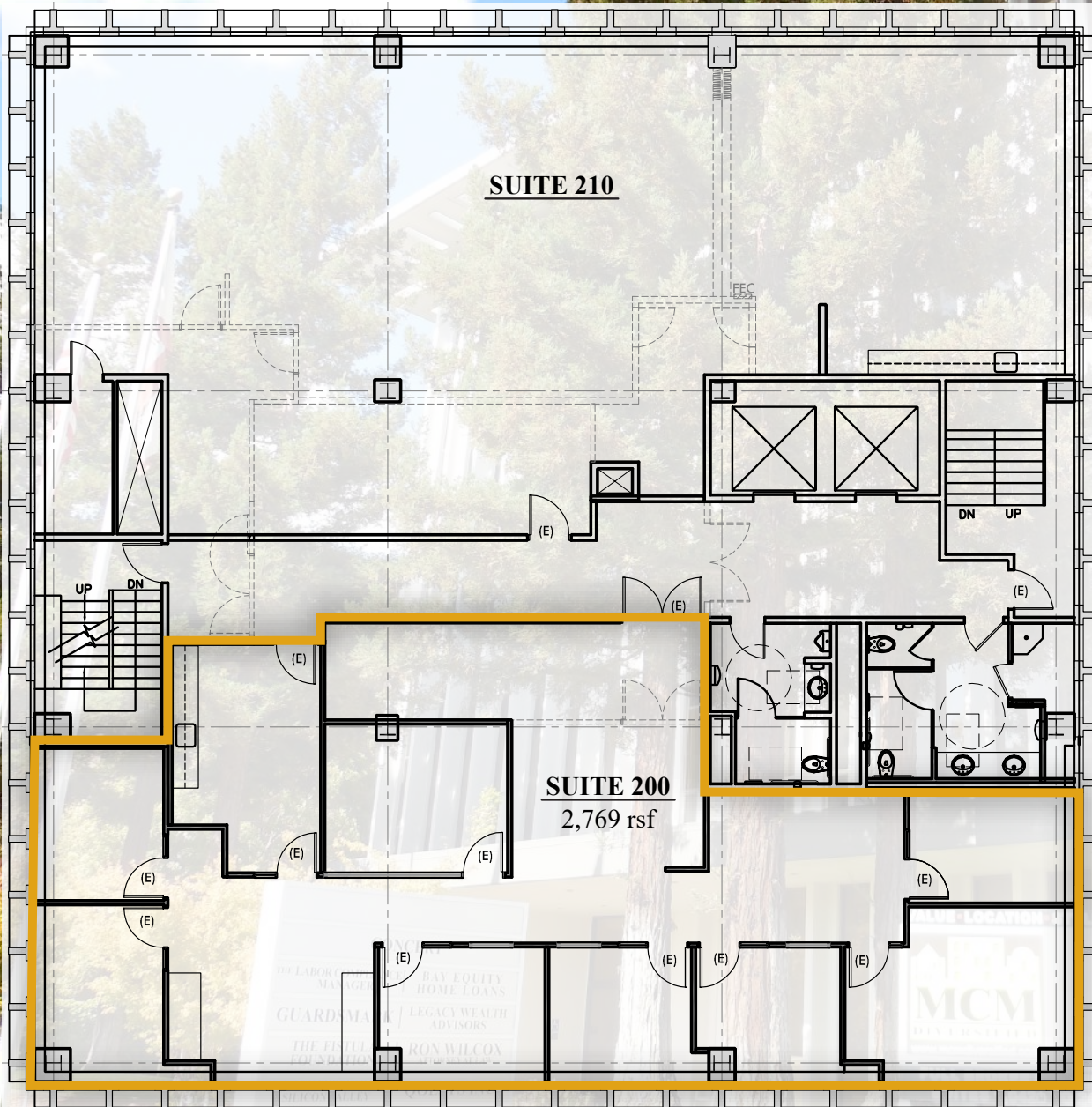


Geris Wong
gwong@ngkf.com
408.987.4134
CA RE License #01142432

1900 THE ALAMEDA

Suite 200 Floor Plan ±2,769 rsf

- 7 Private Offices
- Conference Room
- Kitchenette



Geri Wong

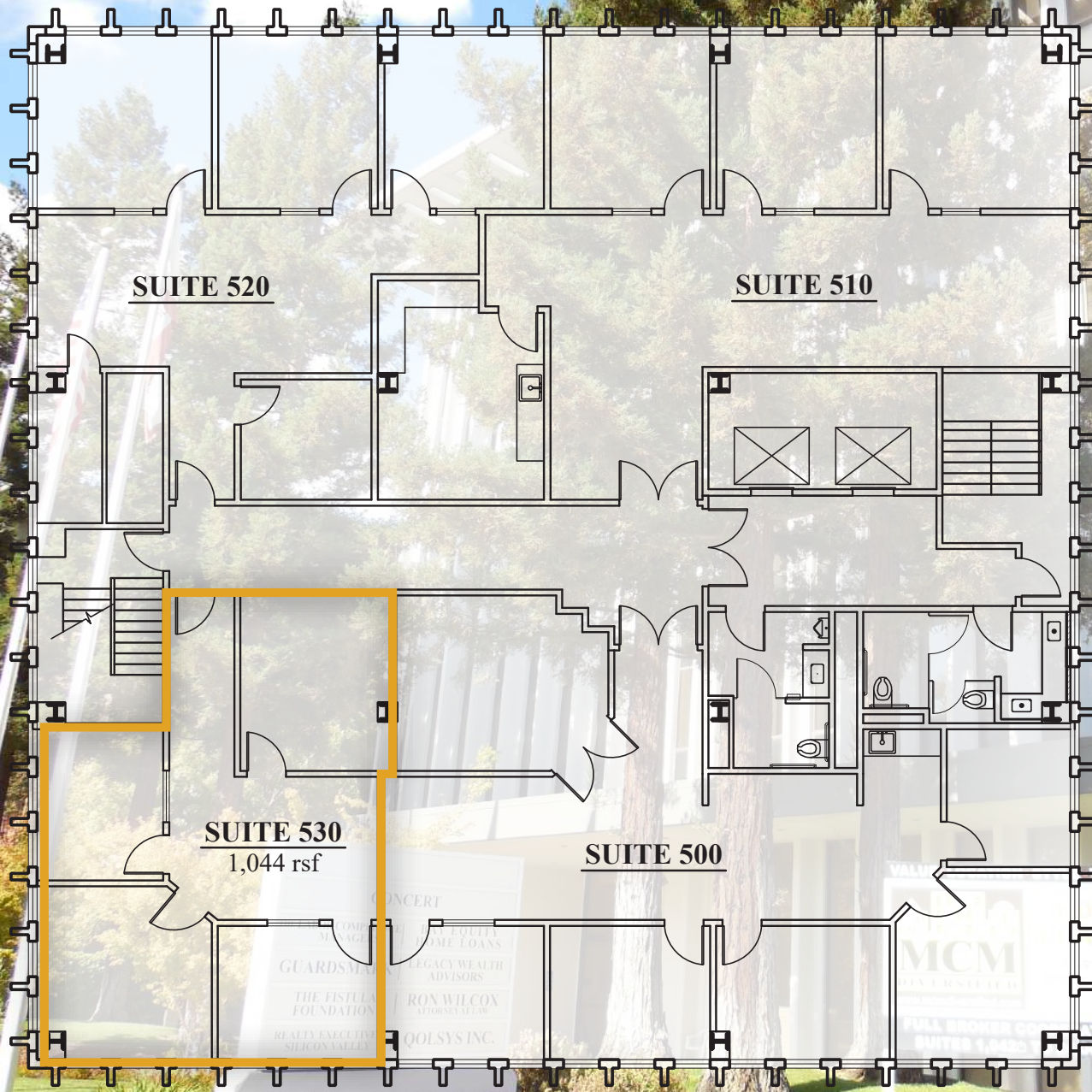
gwong@ngkf.com

408.987.4134

CA RE License #01142432

1900 THE ALAMEDA

Suite 530 Floor Plan
±1,044 rsf



Geri Wong

gwong@ngkf.com

408.987.4134

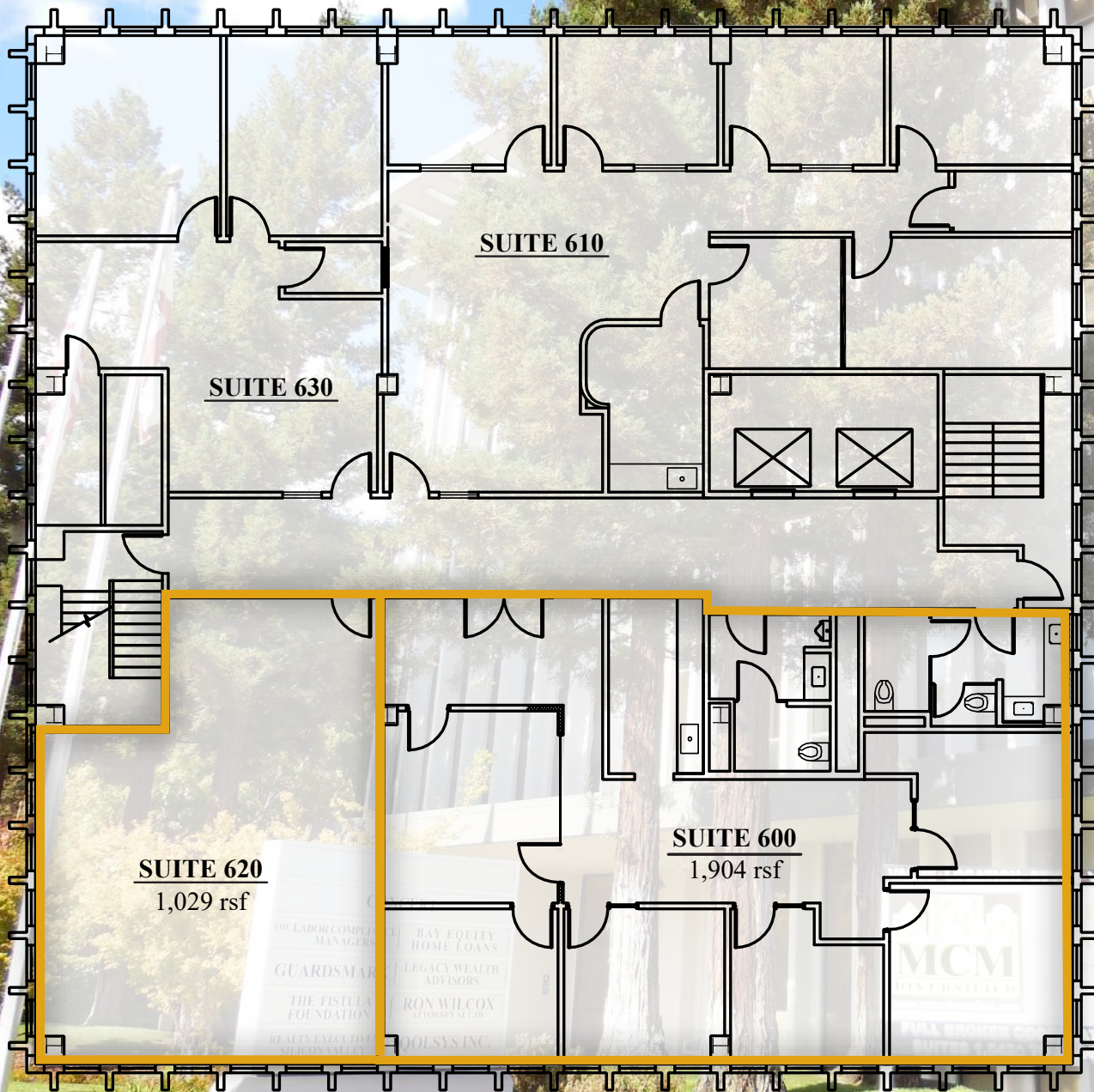
CA RE License #01142432

1900 THE ALAMEDA

Suite 600 Floor Plan ±1,904 rsf

- 5 Private Offices
- Conference Room
- Contiguous to Suite 620 for a combined 2,933 rsf

Suite 620 Floor Plan ±1,029 rsf



SUITE 620
1,029 rsf

SUITE 600
1,904 rsf

Geris Wong

gwong@ngkf.com

408.987.4134

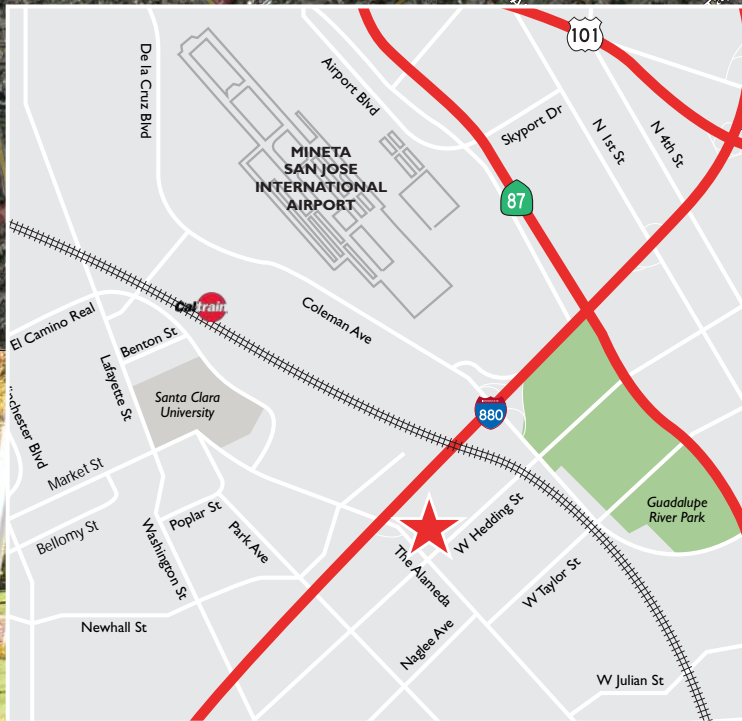
CA RE License #01142432

1900 THE ALAMEDA

1900

THE ALAMEDA

Aerial & Location Map



Geri Wong

gwong@ngkf.com

408.987.4134

CA RE License #01142432