



Harbor Heights

Harbor Heights is conveniently located near SR-16 in downtown Gig Harbor. There is ample parking and excellent signage in this professional office and retail center. Professional tenants include Moore Chiropractic, Sunrise Dental, Fraley Insurance, Critter Clippers and Fox & Vixen Salon.

There are three available spaces at Harbor Heights, all on the second floor. Suite 205 is 1,012 ft² and features an open space plan with break room, restroom, two spacious private offices and new carpet and paint. Suite 207 is 796sf and features one private office and a restroom. Suite 208 is an open space plan with a restroom. The asking rate for these spaces are \$16.00/sf/yr plus NNN. Tenants pay separately metered power.

Overview

- Excellent access
- Ample parking
- Suite 205 of 1,012 ft²
- Suite 207 of 796 ft²
- Suite 208 of 533 ft²
- 207 & 208 combinable to 1,329 ft²
- Lease rate: \$16.00 ft²/yr NNN
- NNN estimate: \$5.92/sf/yr
- Tenant pays separately metered power

DISCLAIMER: The above information has been secured from sources believed to be reliable, however, no representations are made to its accuracy. Prospective tenants or buyers should consult their professional advisors and conduct their own independent investigation. Properties are subject to change in price and/or availability without notice.





SUITE 205



SUITE 207



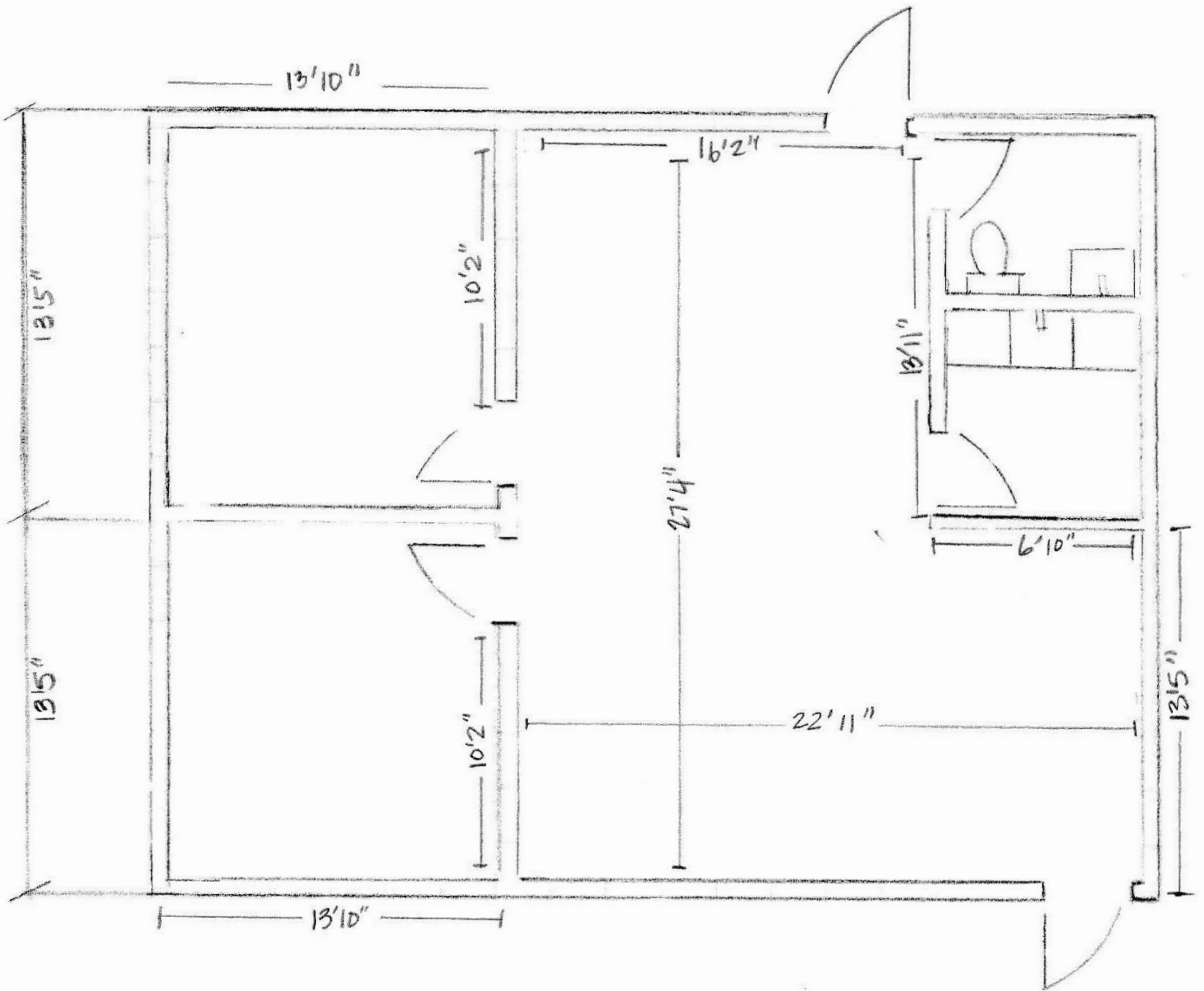
SUITE 208



Andrea Anderson
andrea@johnson-commercial.com
O: (253) 589-9999 C: (253) 444-7801

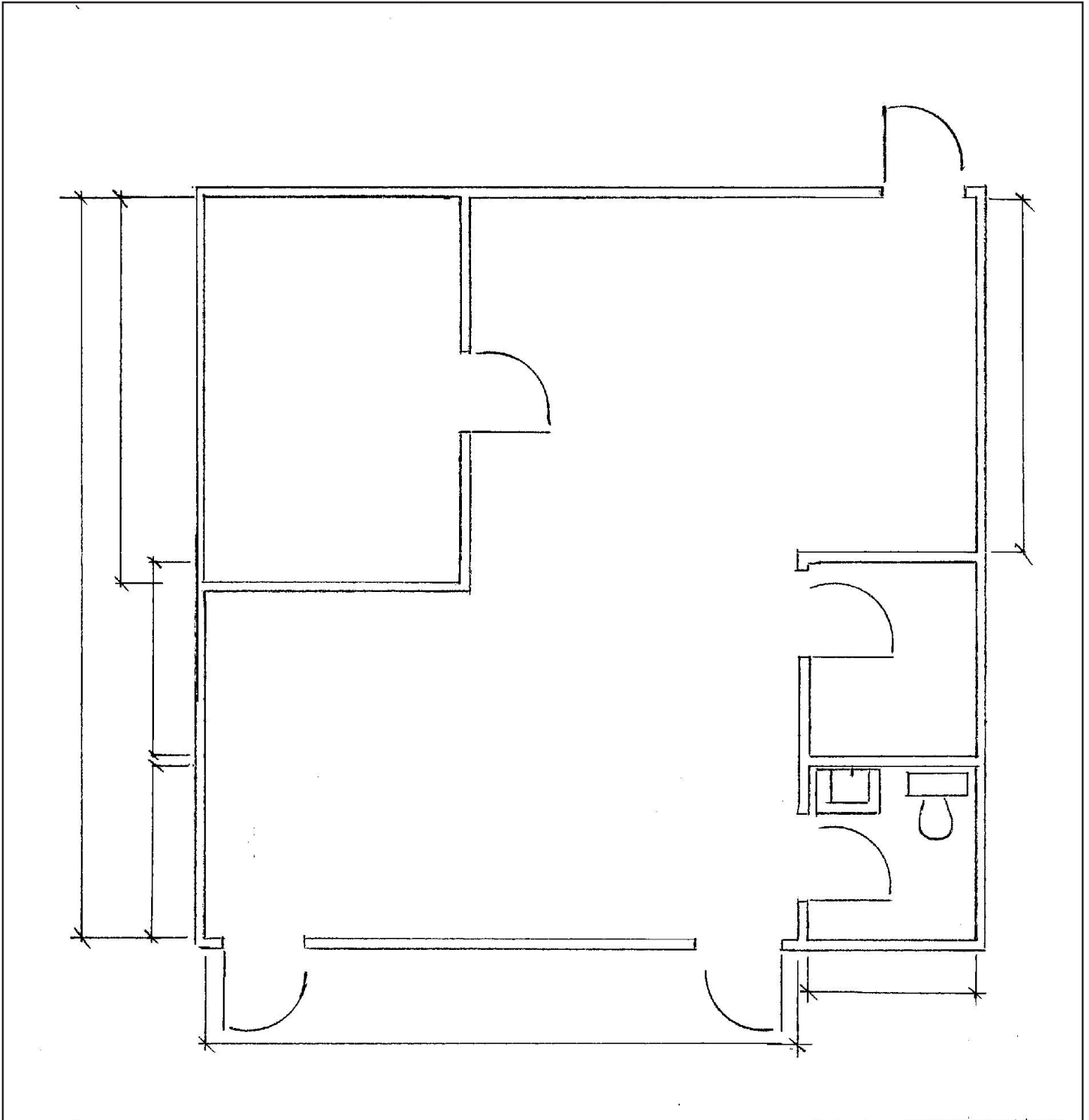


FLOOR PLAN SKETCH - SUITE 205



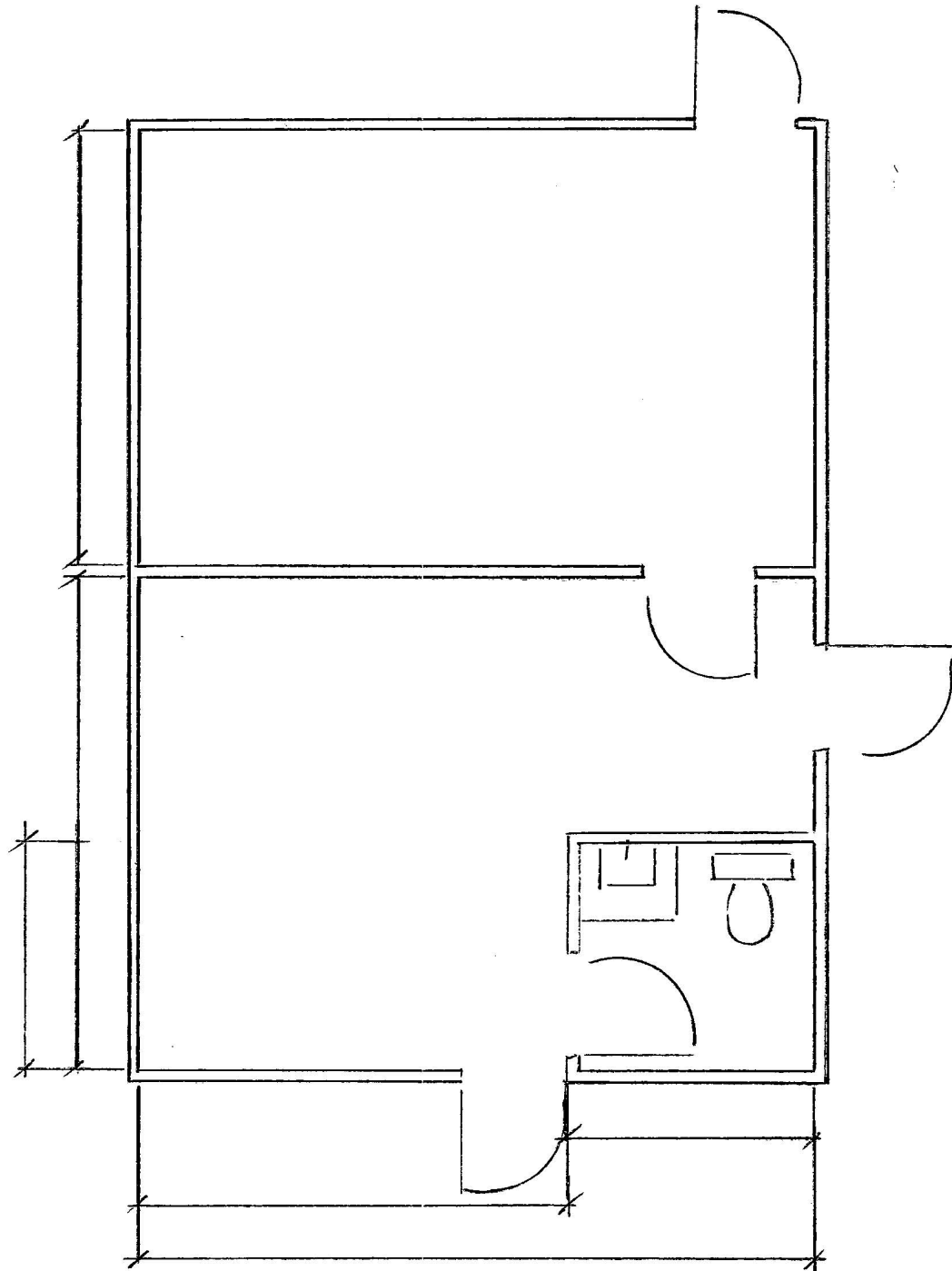


FLOOR PLAN SKETCH - SUITE 207



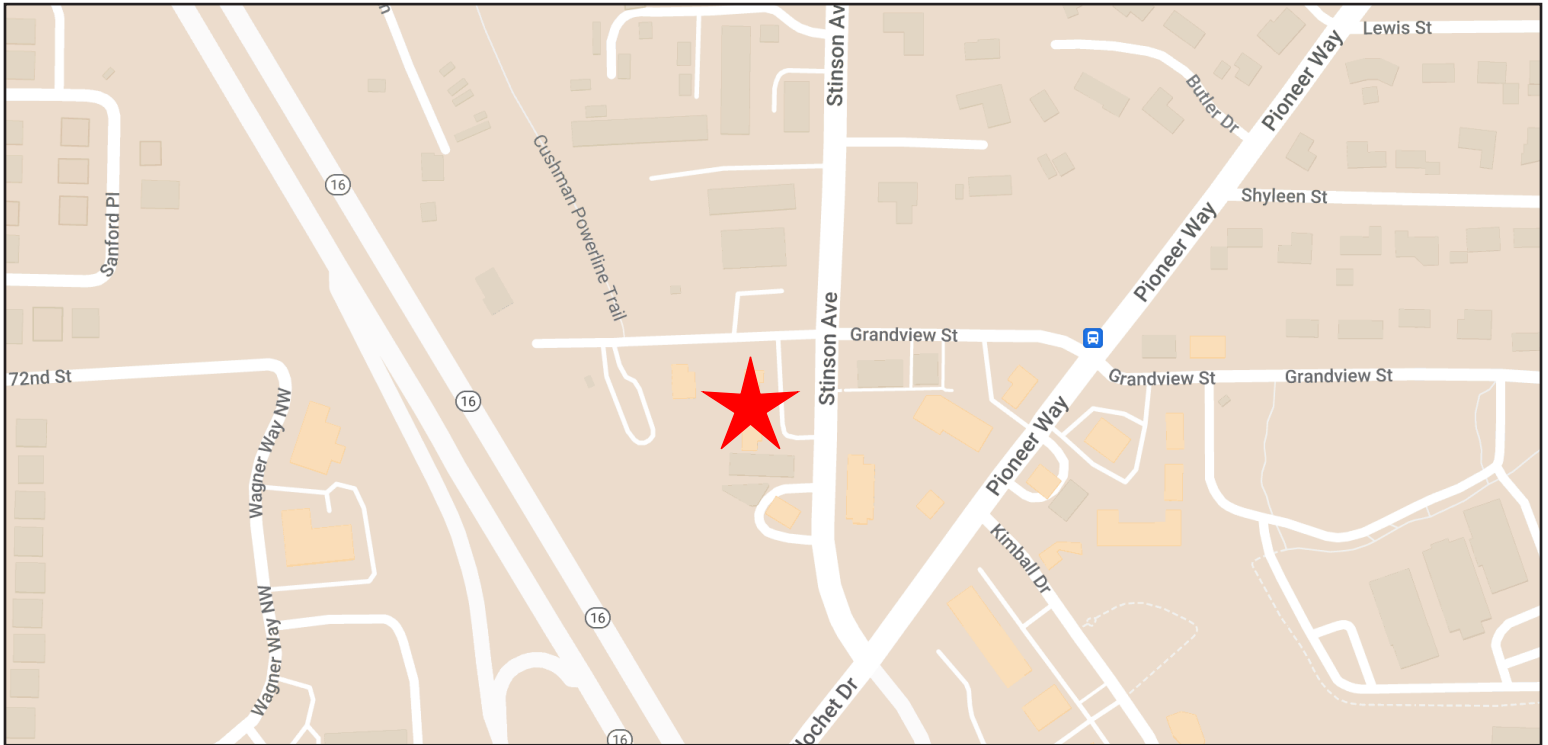


FLOOR PLAN SKETCH - SUITE 208





NEIGHBORHOOD MAP



AREA MAP



Andrea Anderson
andrea@johnson-commercial.com
O: (253) 589-9999 C: (253) 444-7801