

MORNINGSIDE
HEIGHTS

NEW YORK
NY

CIRCA CENTRAL PARK RETAIL



SPACE DETAILS

LOCATION

Northeast corner of Eighth Avenue and Central Park North

APPROXIMATE SIZE

Ground Floor	4,392 SF
Lower Level	5,240 SF
Total	9,632 SF

CEILING HEIGHT

Ground Floor	15 FT
Lower Level	11 FT-12 FT

FRONTAGE

197 FT of wraparound

TERM

Negotiable

POSSESSION

Immediate

SITE STATUS

New construction

NEIGHBORS

Harlem Tavern, Row House, Lido, Caféine, Melba's, Cafe Frederick, L Bar, Cantina Taquetia and Tequila Bar, Starbucks, Cafe Amrita, Land Yoga, 67 Orange Street, Bier, Harlem Food Bar, Blujeen and Silvana

COMMENTS

Iconic new construction on one of four Central Park retail corners

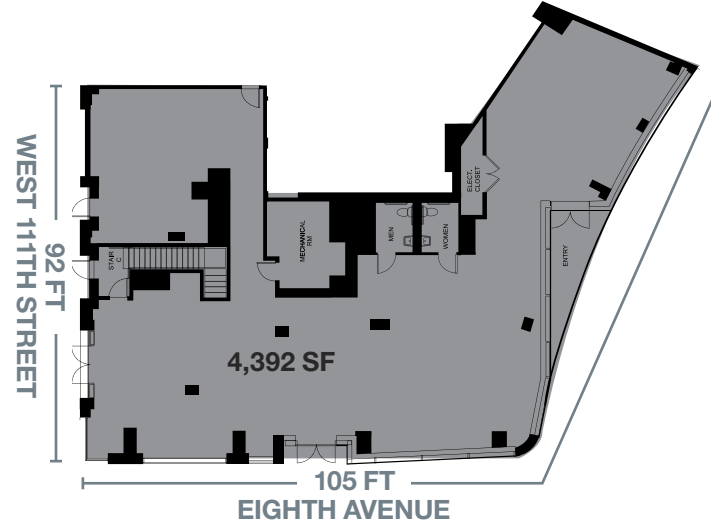
Close proximity to Columbia University

On Central Harlem's restaurant row

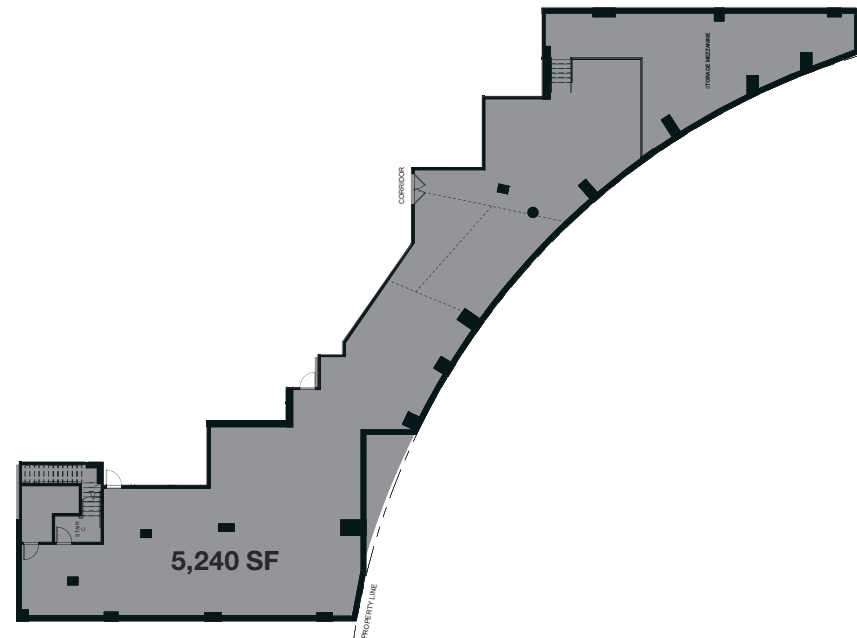
Situated at the base of Harlem's most expensive condominium building

Amazing outdoor seating available on Central Park piazza

GROUND FLOOR



LOWER LEVEL



AREA PHOTOS



AREA RETAIL



CONTACT EXCLUSIVE AGENT

HARRISON ABRAMOWITZ

212.372.2467

habramowitz@ngkf.com



NGKF.COM