

# 120 Kisco Avenue

A 26,000 SqFt Flex-Space Office Building



- Easy Access to Saw Mill River Pkwy & I-684
- 5 Minute walk to Downtown, Metro North Train Station and Major Retail Corridor
- AAA Business Location with 435 Feet of Frontage on the Best Street in Mt. Kisco
- In the Heart of the Commercial Business District in Northern Westchester



# Arial View



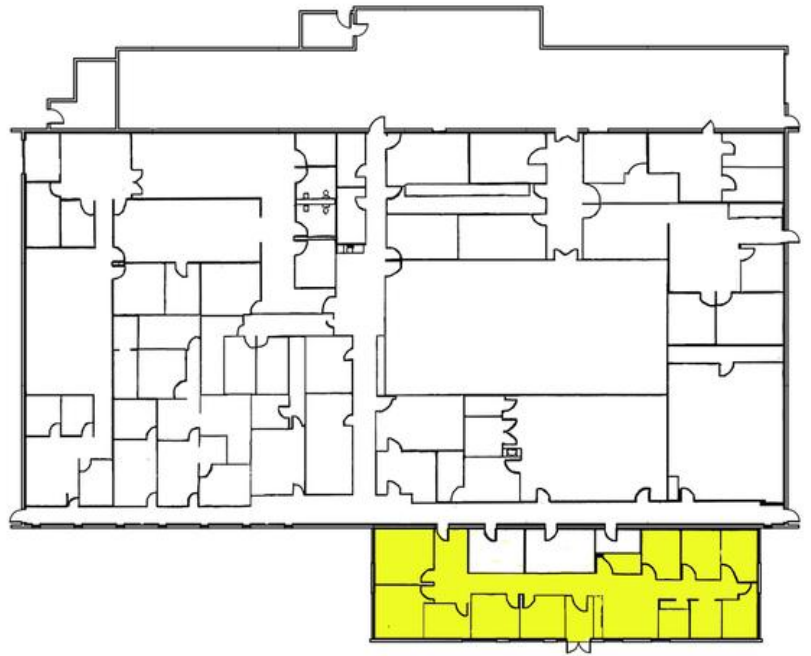
- 435 Feet of Frontage on Kisco Avenue
- 60+ Parking Spaces
- 9 Zones of High-efficiency HVAC
- State-of-the-art Security Camera Monitoring
- Uniquely Flexible Interior Configurations
- On-site Management and Maintenance

# Available

## 2370 Square Feet Prime Office Space

### Space Features:

- Private Street Entrance
- Prime Frontage on Kisco Ave
- Private Bathroom
- Monument Signage



---

Currently being used as a medical facility.

Possible future uses:

Law Office - Accounting Firm - Medical/Dental  
Professional Office - Engineering - Architectural

---





