



DUNCAN BUILDING

315 2ND AVE S, SEATTLE, WA 98104

CAVAN O'KEEFE

Senior Managing Director
t 206-395-2903
cavan.okeefe@nmrk.com

JESSE OTTELE

Executive Managing Director
t 206-452-4529
jesse.ottele@nmrk.com

TRACY TURNURE

Associate
t 425.372.9923
tracy.turnure@nmrk.com

NEWMARK





Building Highlights

- Skylights & windows provides abundant natural light
- Full HVAC, elevator, & building security system
- Brick walls & open beamed ceilings
- Located 2 blocks from Light Rail & Union Station
- Full floor tenancy offers security, control & identity



WALK SCORE

97



TRANSIT SCORE

100

Availabilities

Floor 2

6,000 RSF

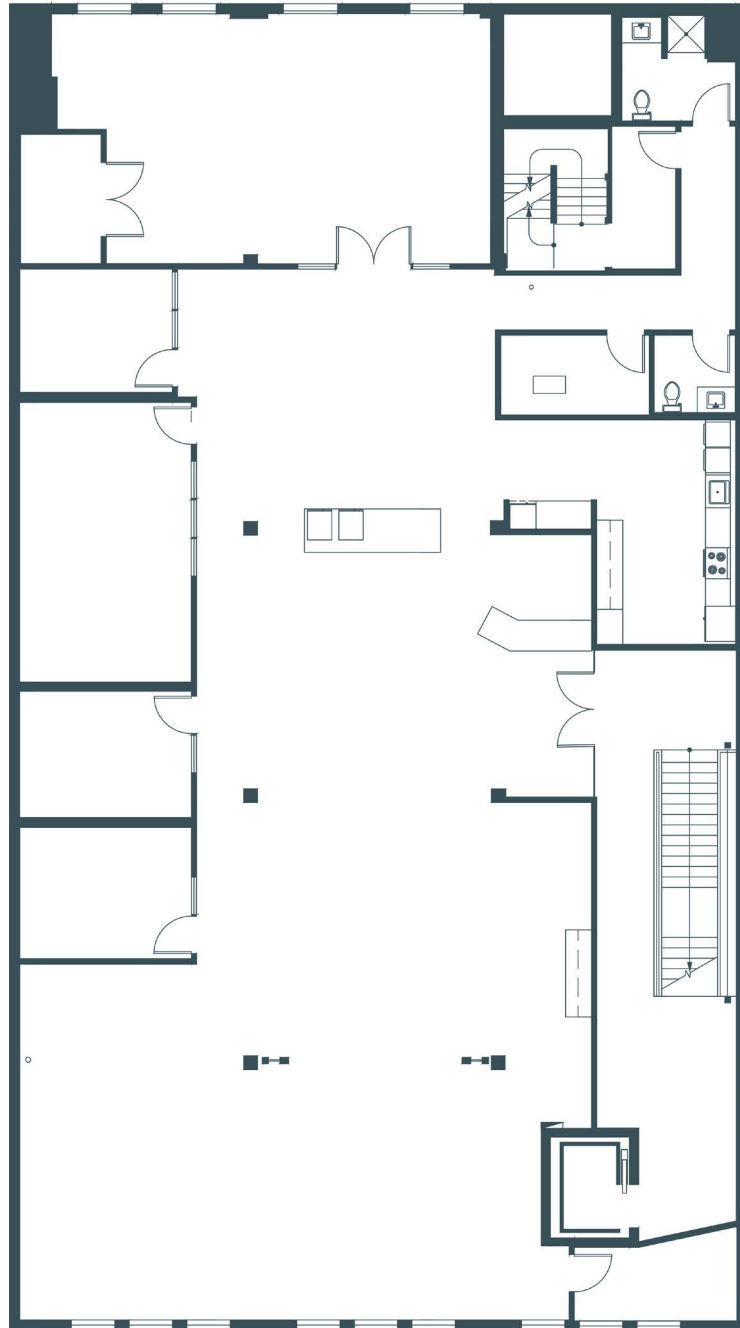
Available 1.15.22



Floor 2

6,000 RSF

Available 1.15.22





DUNCAN BUILDING

315 2ND AVE S, SEATTLE, WA 98104

CAVAN O'KEEFE

Senior Managing Director
t 206-395-2903
cavan.okeefe@nmrk.com

JESSE OTTELE

Executive Managing Director
t 206-452-4529
jesse.ottele@nmrk.com

TRACY TURNURE

Associate
t 425.372.9923
tracy.turnure@nmrk.com

NEWMARK

The information contained herein has been obtained from sources deemed reliable but has not been verified and no guarantee, warranty or representation, either express or implied, is made with respect to such information. Terms of sale or lease and availability are subject to change or withdrawal without notice. 10/21