

Available Medical Office Space for Lease

Santa Clarita Valley Medical Plaza

26357 McBEAN PARKWAY, SANTA CLARITA, CA 91355

For leasing information:

Lynn Lantgen

Senior Director of Leasing

Phone: 858-794-1900

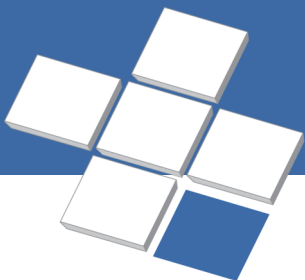
Fax: 858-794-1910

llantgen@pmbres.com

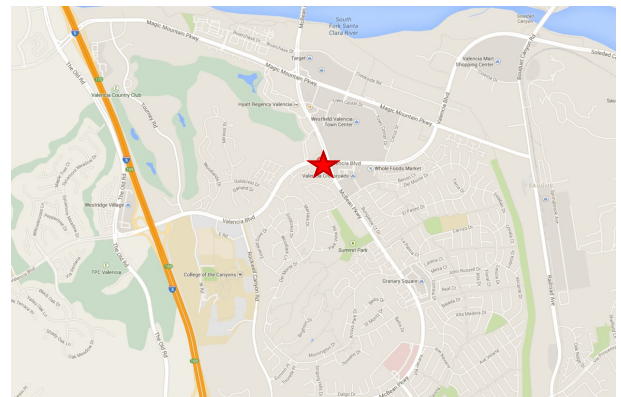
www.pmbres.com



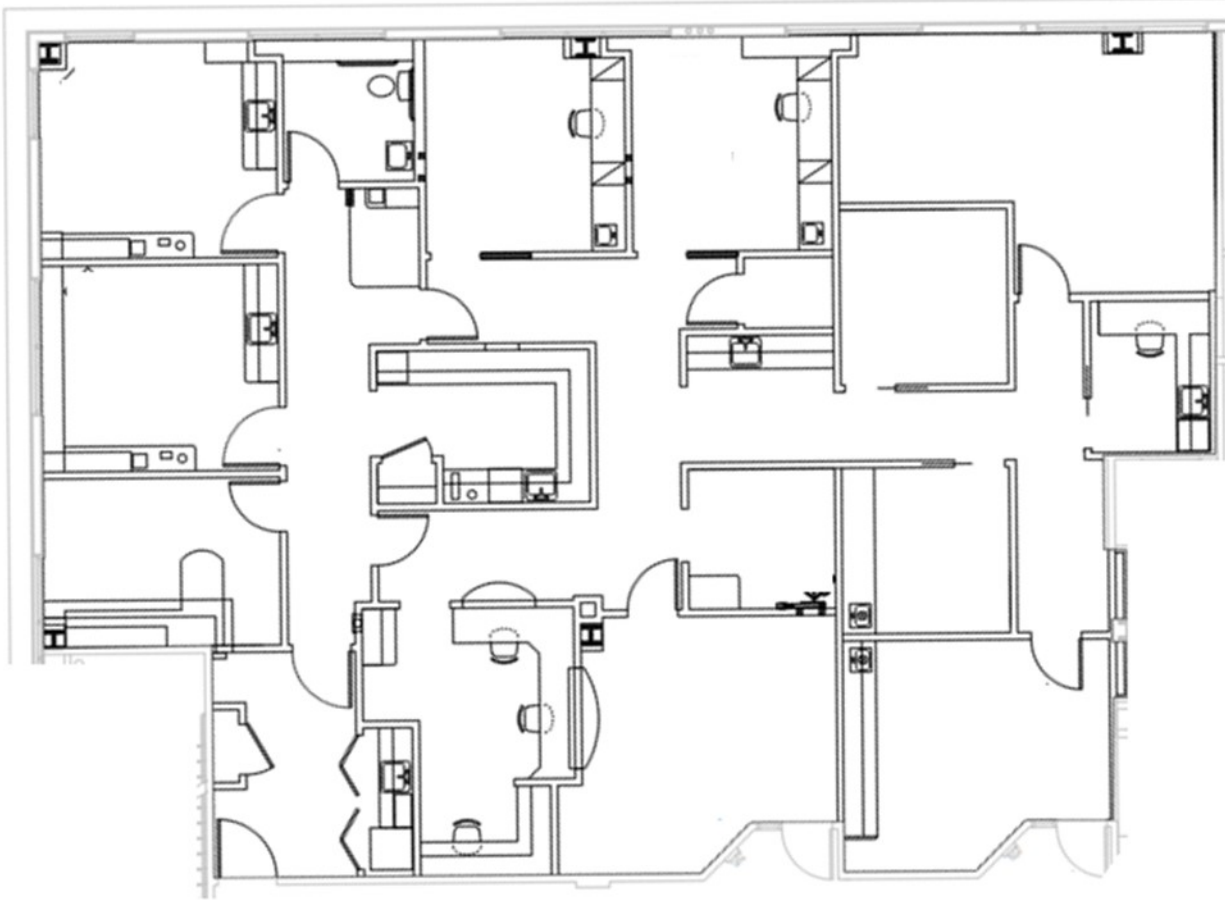
- Class A, Three-story, 78,000 SF Medical Office Building constructed in 2005
- Anchor tenants include Providence Holy Cross and Facey Medical Group
- Ample surface parking
- Convenient access to Highway 126 and Interstate 5
- One mile from Henry Mayo Newhall Memorial Hospital
- Local professional management



PMB
Real Estate Services
Real Estate Management Solutions for Healthcare

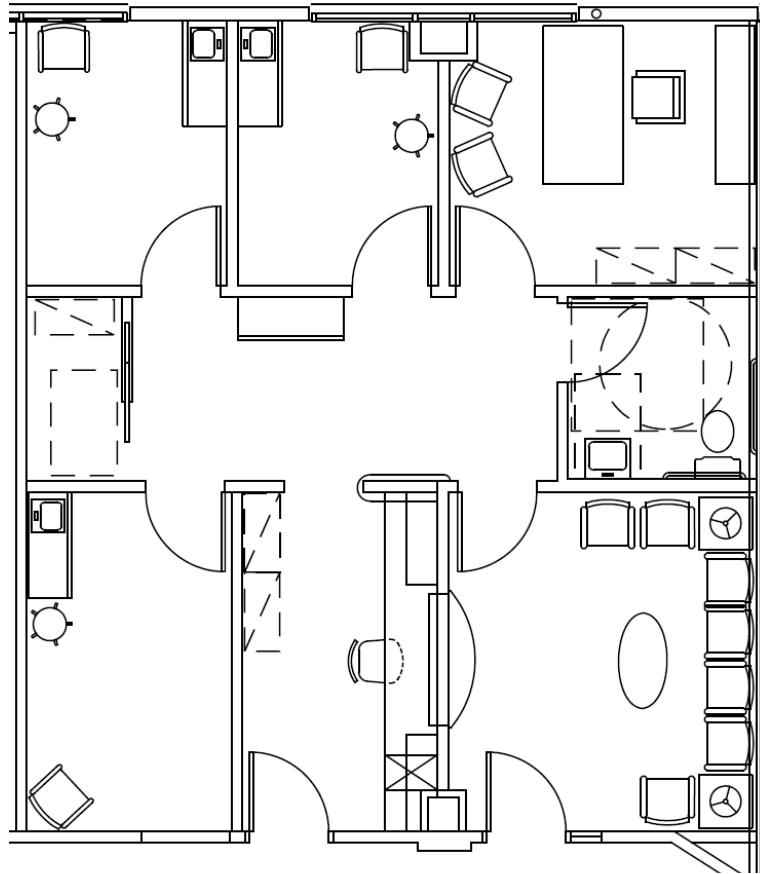


Suite 235/255 - 3,583 RSF



PMB Real Estate Services
Real Estate Management Solutions for Healthcare

Suite 210 - 972 RSF



PMB Real Estate Services
Real Estate Management Solutions for Healthcare