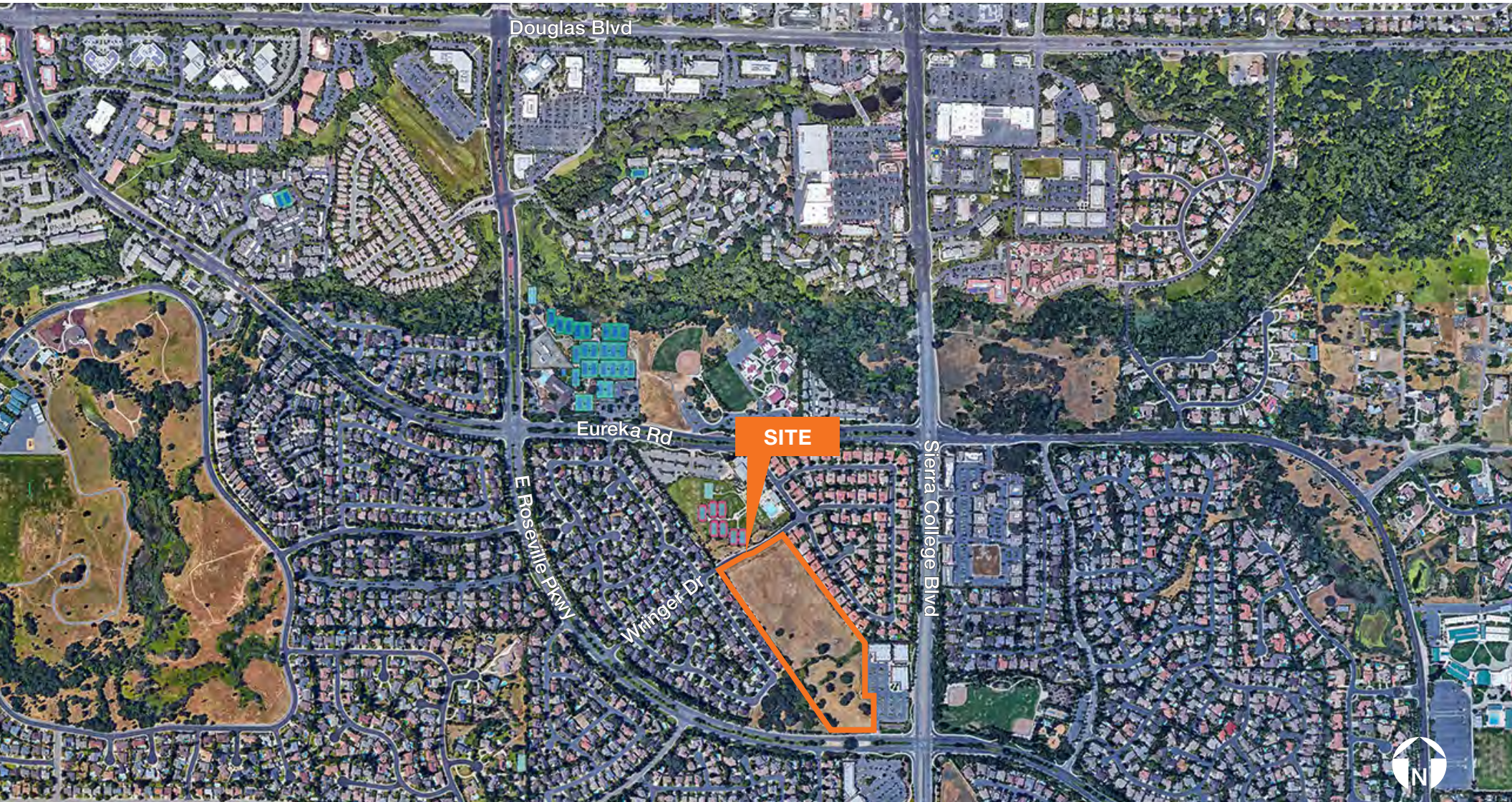


# LAND FOR SALE

## 13.5 AC of Multi-Use Land E Roseville Pkwy & Sierra College Blvd, Roseville, CA



### CONTACT

**Kevin Sheehan**  
916.751.3601 | [ksheehan@kiddermathews.com](mailto:ksheehan@kiddermathews.com)  
LIC #00936093

**Tyler Boyd**  
916.751.3625 | [tboyd@kiddermathews.com](mailto:tboyd@kiddermathews.com)  
LIC #01927167



# LAND FOR SALE

# E Roseville Pkwy & Sierra College Blvd

## PROPERTY HIGHLIGHTS

13.5 AC of multi-use land

Current zoning: PD240

Designated by the City of Roseville as "Community Commercial" land use

Possible uses include:

- Mini/self-storage
- Boat/motor-home storage
- General commercial
- Recreational
- Nursery

Call for pricing

## SERVICES

Gas	PG&E
Electric	Roseville Electric
Water	City of Roseville Water Utility
Sewer	City of Roseville Wastewater Utility



## CONTACT

**Kevin Sheehan**

Managing Partner

916.751.3601

ksheehan@kiddermathews.com

LIC #00936093

**Tyler Boyd**

Associate Vice President

916.751.3625

tboyd@kiddermathews.com

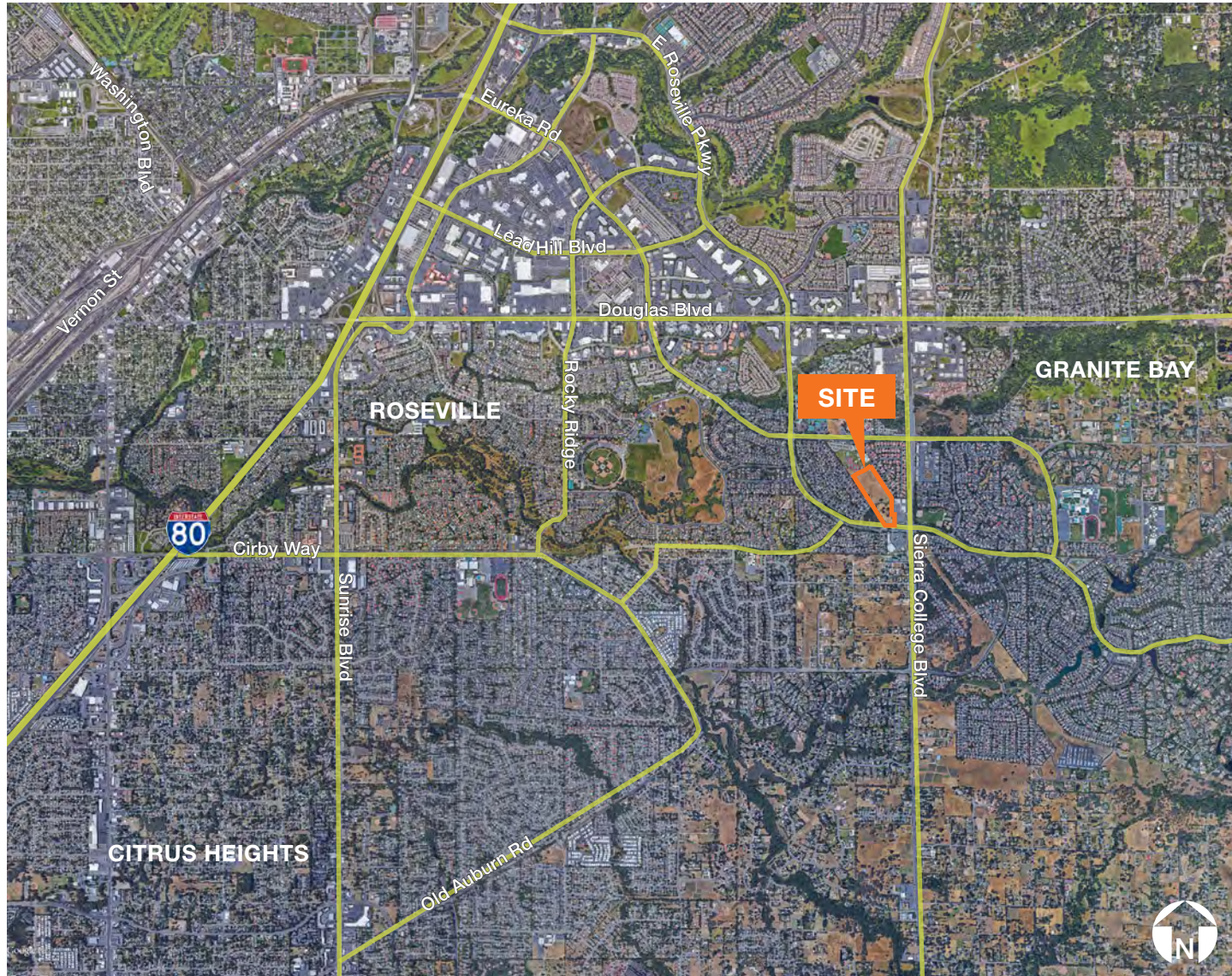
LIC #01927167



# LAND FOR SALE

# E Roseville Pkwy & Sierra College Blvd

## SURROUNDING AREA



## CONTACT

### Kevin Sheehan

Managing Partner

916.751.3601

ksheehan@kiddermathews.com

LIC #00936093

### Tyler Boyd

Associate Vice President

916.751.3625

tboyd@kiddermathews.com

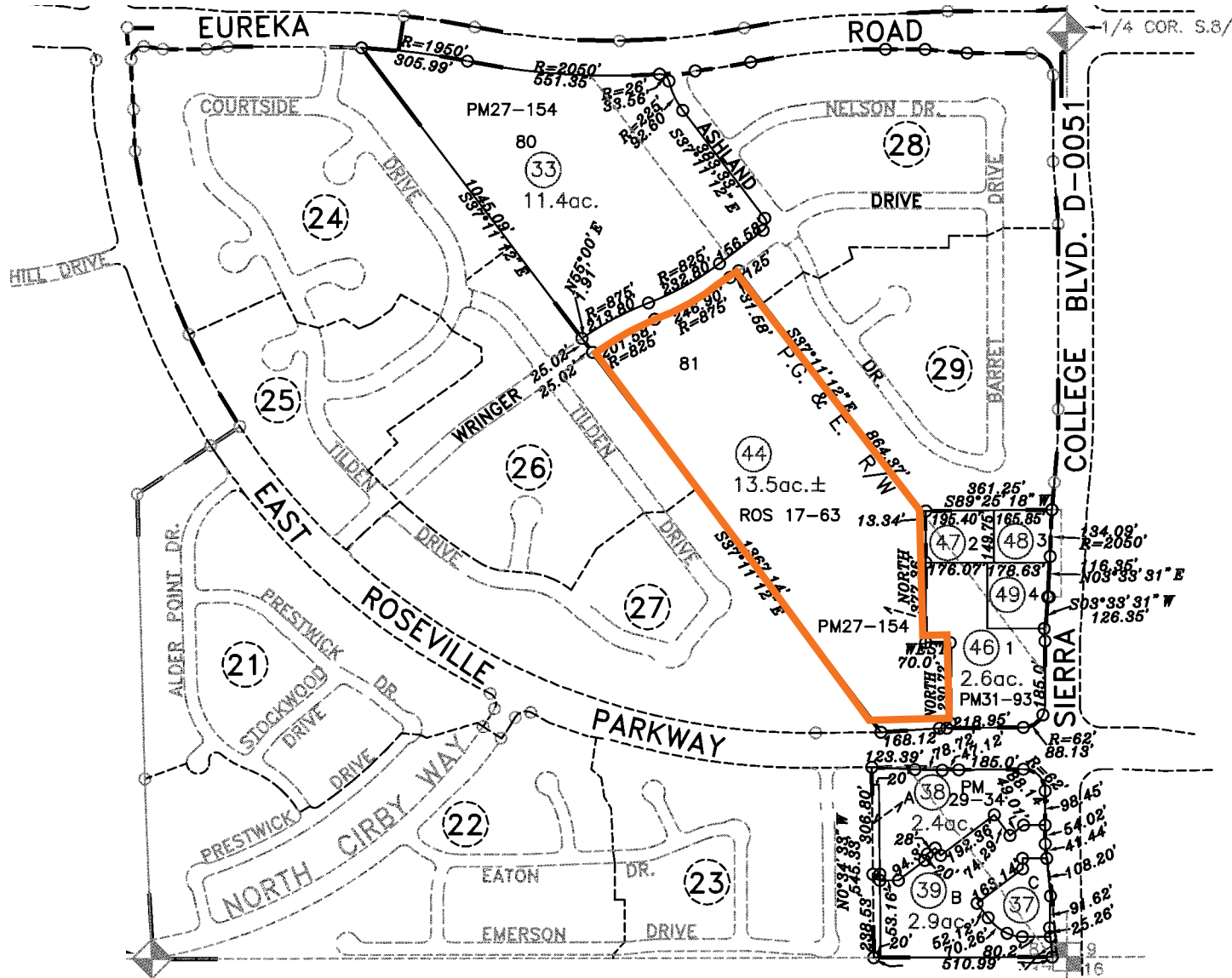
LIC #01927167



# LAND FOR SALE

# E Roseville Pkwy & Sierra College Blvd

## PARCEL MAP



## CONTACT

**Kevin Sheehan**  
Managing Partner  
916.751.3601  
ksheehan@kiddermathews.com  
LIC #00936093

**Tyler Boyd**  
Associate Vice President  
916.751.3625  
tboyd@kiddermathews.com  
LIC #01927167

