



Jackson Square Ground Floor Retail/Office

570 Pacific Ave.
San Francisco, CA



Office: (415) 781-7700

Haley Klein
Cell (925) 408-6415
hk@deroseappelbaum.com

Santino DeRose
Cell (415) 336-0151
sd@deroseappelbaum.com



Jackson Square Brick & Timber



Office: (415) 781-7700

Haley Klein
Cell (925) 408-6415
hk@deroseappelbaum.com

Santino DeRose
Cell (415) 336-0151
sd@deroseappelbaum.com

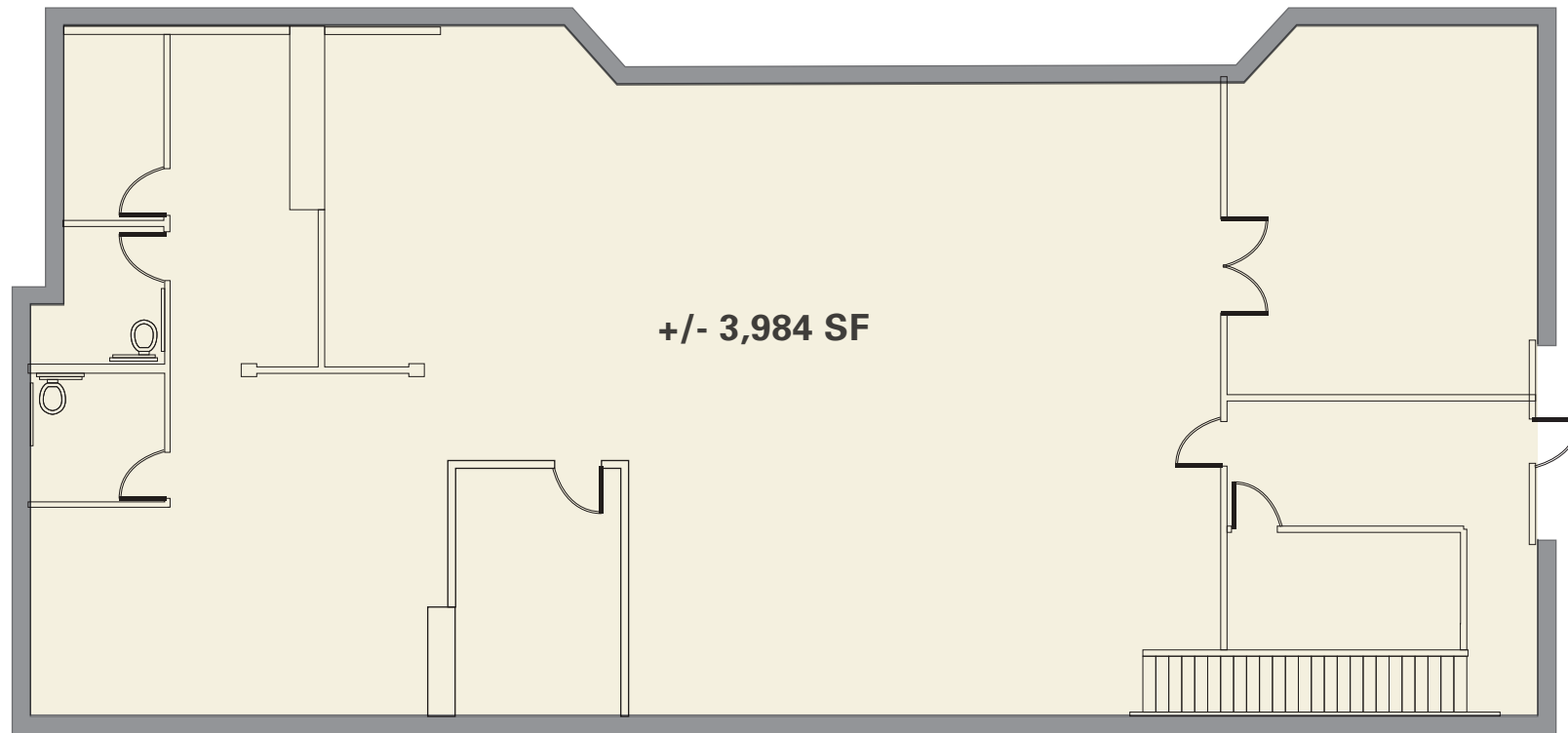


570 Pacific Ave.
San Francisco, CA

**DeRose &
Appelbaum**
Commercial Real Estate Services
Office: (415) 781-7700

Haley Klein
Cell (925) 408-6415
hk@deroseappelbaum.com

Santino DeRose
Cell (415) 336-0151
sd@deroseappelbaum.com



- +/- 3,894 SF
- Heart of Jackson
- Square
- Exposed Brick
- Close proximity to Financial District, North Beach, and public transportation
- Expansive Window Line
- Excellent Visibility
- Lease Type: NNN

Floor Plan



Haley Klein
Cell (925) 408-6415
hk@deroseappelbaum.com

Santino DeRose
Cell (415) 336-0151
sd@deroseappelbaum.com

Office: (415) 781-7700



Bocadillos



Cotogna



Réveille Coffee



Aventine



Roka Akor



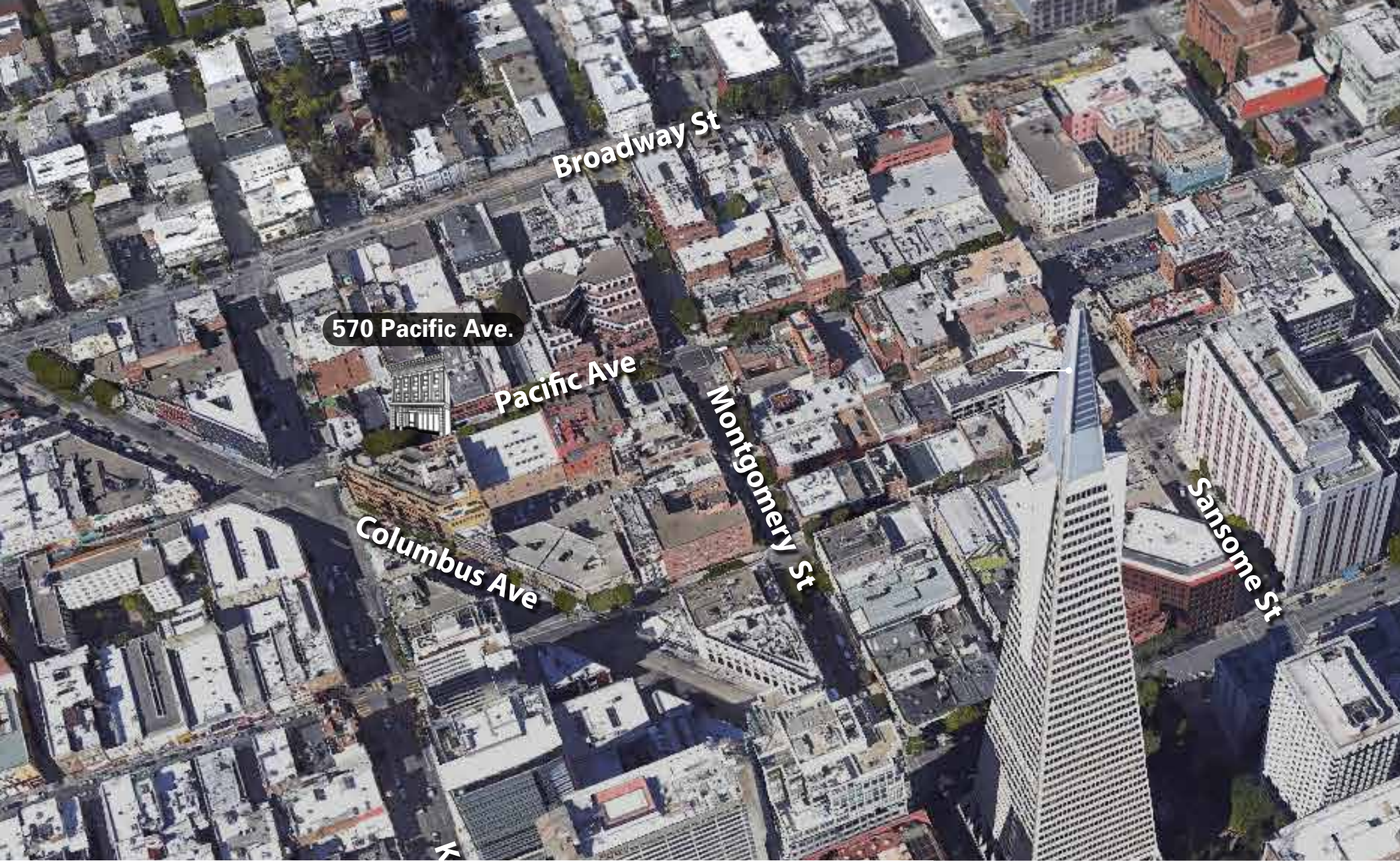
Sydney G. Walton Square

Jackson Square Highlights

DeRose & Appelbaum
Commercial Real Estate Services
Office: (415) 781-7700

Haley Klein
Cell (925) 408-6415
hk@deroseappelbaum.com

Santino DeRose
Cell (415) 336-0151
sd@deroseappelbaum.com



Jackson Square / Financial District / North Beach



Haley Klein
Cell (925) 408-6415
hk@deroseappelbaum.com

Santino DeRose
Cell (415) 336-0151
sd@deroseappelbaum.com

Office: (415) 781-7700