

LEASE

223 ERIE DR UNIT 2

Billings, MT 59101



LEASE RATE

\$10.00 SF/yr

George Warmer, CCIM

O: 406 855 8946 | C: 406 855 8946

george@cbcmontana.com

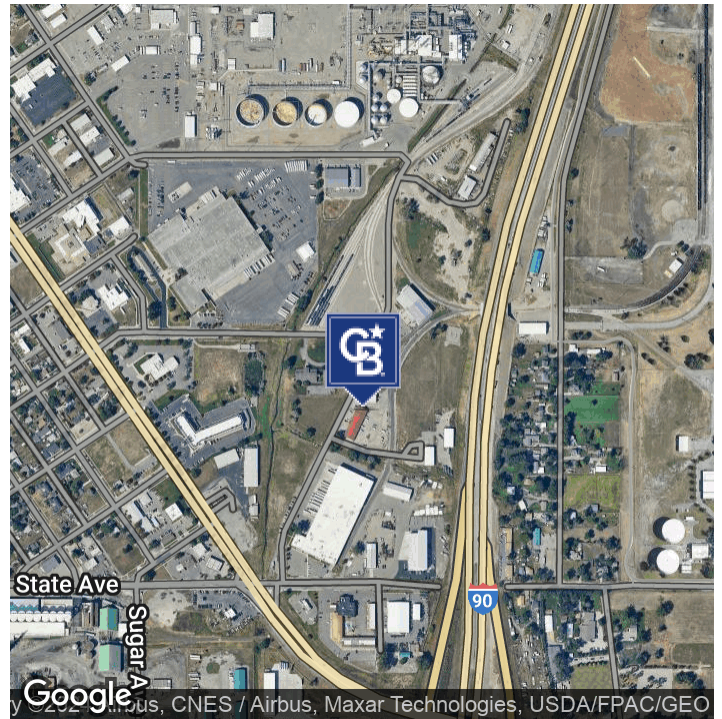


COLDWELL BANKER
COMMERCIAL
CBS

LEASE

223 ERIE DR UNIT 2

Billings, MT 59101



OFFERING SUMMARY

Lease Rate:	\$10.00 SF/yr (NNN)
Building Size:	1,664 SF
Lot Size:	1,947 SF
Zoning:	CI

PROPERTY OVERVIEW

Shop Space for Lease
\$10 PSF NNN
\$1,590.15 Per Month (Base \$1,386.67 Nets \$203.84)
1,664 SF Unit

Agent: George Warmer

PROPERTY HIGHLIGHTS

- Includes Bathroom and Mezzanine storage
- Rear Fenced Parking Available

George Warmer, CCIM

O: 406 855 8946 | C: 406 855 8946

george@cbcmontana.com

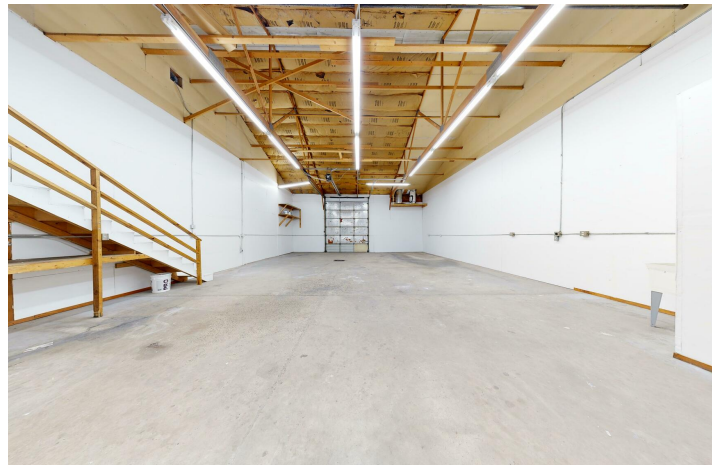
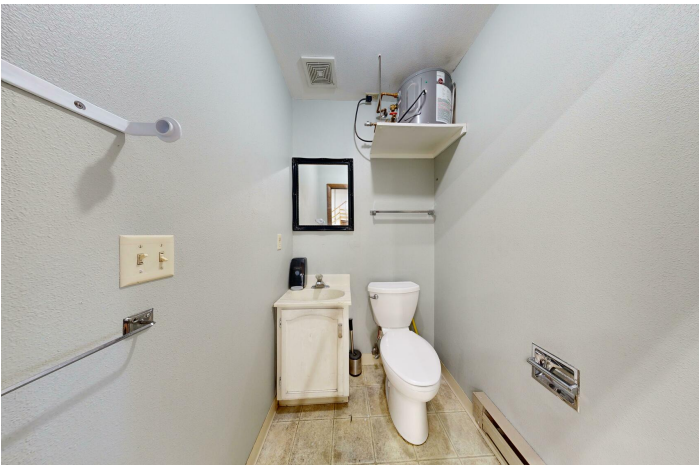
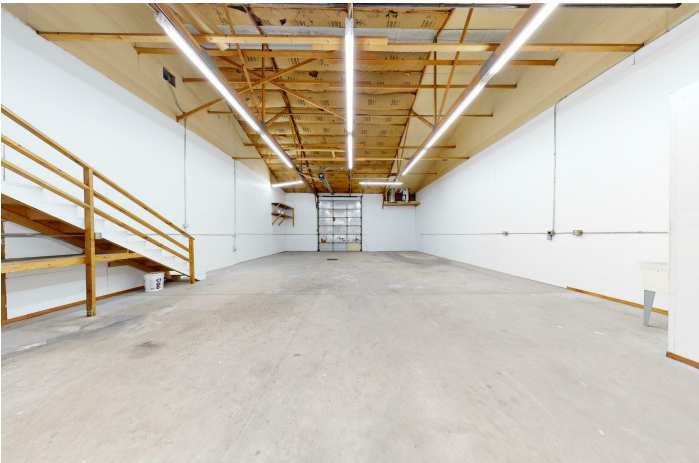


COLDWELL BANKER
COMMERCIAL
CBS

PHOTOS

223 ERIE DR UNIT 2

Billings, MT 59101



George Warmer, CCIM
O: 406 855 8946 | C: 406 855 8946
george@cbcmontana.com

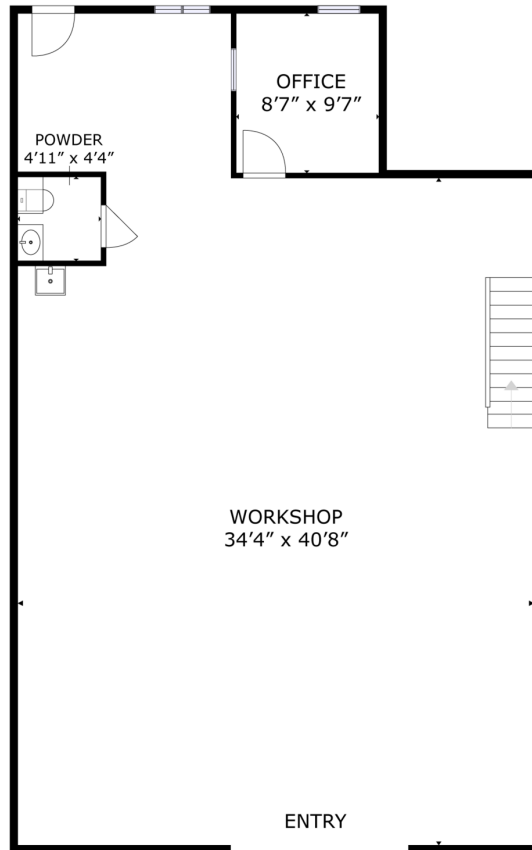


**COLDWELL BANKER
COMMERCIAL**
CBS

FLOOR PLAN

223 ERIE DR UNIT 2

Billings, MT 59101



FLOOR 1

GROSS INTERNAL AREA
TOTAL: 1507 sq.ft
SIZES AND DIMENSIONS ARE APPROXIMATE, ACTUAL MAY VARY.



George Warmer, CCIM

O: 406 855 8946 | C: 406 855 8946

george@cbcmontana.com



**COLDWELL BANKER
COMMERCIAL**
CBS

MAP

223 ERIE DR UNIT 2

Billings, MT 59101



George Warner, CCIM
O: 406 855 8946 | C: 406 855 8946
george@cbcmontana.com

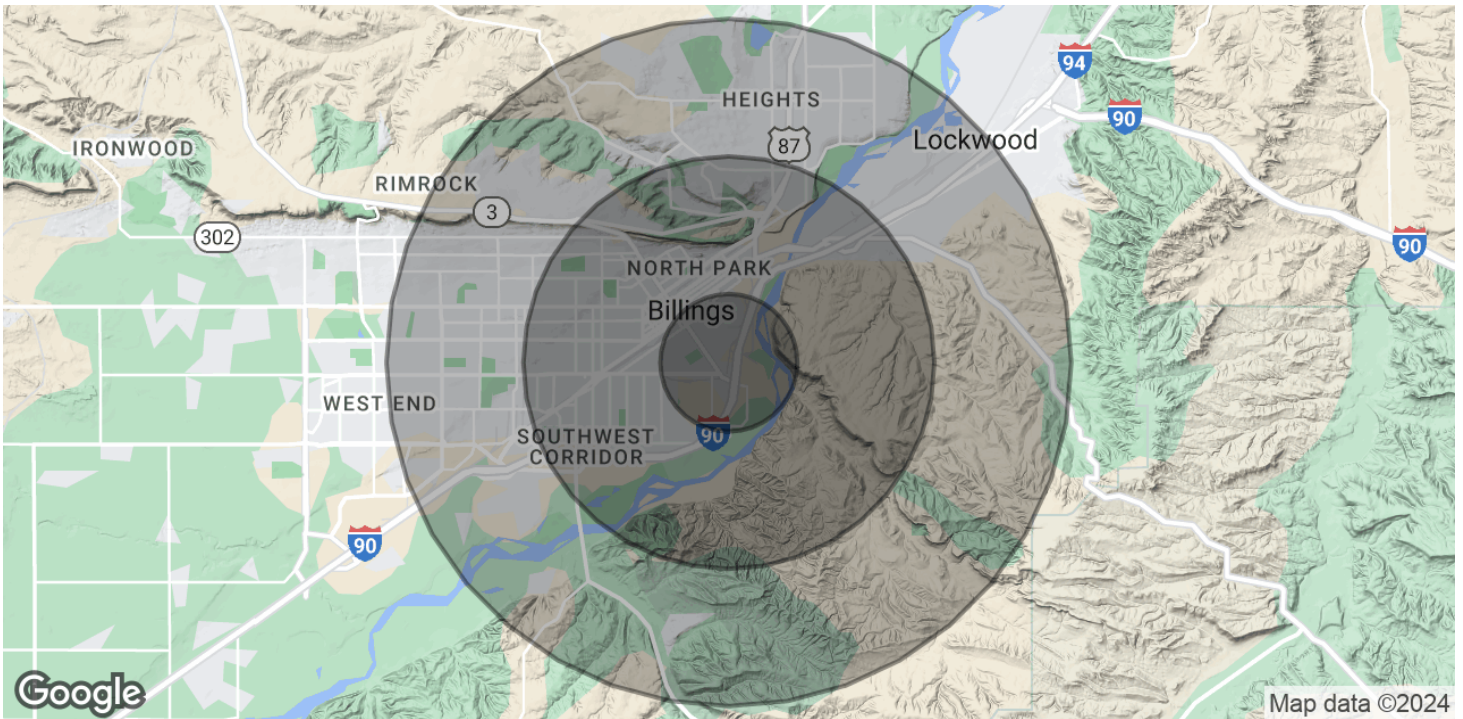


COLDWELL BANKER
COMMERCIAL
CBS

DEMOGRAPHICS

223 ERIE DR UNIT 2

Billings, MT 59101



POPULATION	1 MILE	3 MILES	5 MILES
Total Population	3,353	38,384	83,398
Average Age	39.6	35.3	37.4
Average Age (Male)	38.1	34.1	36.1
Average Age (Female)	42.2	37.1	39
HOUSEHOLDS & INCOME	1 MILE	3 MILES	5 MILES
Total Households	1,493	18,332	38,665
# of Persons per HH	2.2	2.1	2.2
Average HH Income	\$42,932	\$57,629	\$68,170
Average House Value	\$135,251	\$190,827	\$210,179

* Demographic data derived from 2020 ACS - US Census

George Warmer, CCIM
 O: 406 855 8946 | C: 406 855 8946
 george@cbcmontana.com





GEORGE WARMER, CCIM

Managing Partner

george@cbcmontana.com

Direct: 406.855.8946 | Cell: 406.855.8946

MT #RRE-RBS-LIC-14174

PROFESSIONAL BACKGROUND

George Warmer is the Managing Broker of Coldwell Banker Commercial CBS, specializing in sales, leasing, and development of commercial properties in Montana. George is a CCIM Designee and has worked in the commercial real estate business since 2005. During that time, he has brokered millions of dollars in leasing and sales transactions.

EDUCATION

In 1987 George graduated with a Bachelor of Arts degree from USC and a MBA from the University of Denver in 1995. George's background in banking and management of personally owned businesses gave George a unique insight into the needs of his commercial clients. As a CCIM designee, George offers his clients the valuable analytical tools necessary to make sound commercial real estate decisions.

MEMBERSHIPS

In addition to handling his own commercial property listings portfolio and maintaining a large client base, George is actively involved in several trade, civic, and community organizations.
Board Member: Big Sky Economic Development Association
Board Member: City of Billings Board of Adjustments
Member: CCIM
Member: Billings Downtown Rotary

RECENT TRANSACTIONS

- Sale: Site for 150,000 SF RVU Medical School Campus
- Sale: 52,000 SF Fed Ex Facility
- Sale: 108 Acre Montana Sapphire Mix Use Development
- Sale: Land For Camping World Sale: Land For Bretz RV
- Lease: 10,000 SF Pizza Ranch Lease
- Lease: 17,000 SF Shamrock Foods
- Lease: Shiloh Commons a 65,000 SF Mixed-Use Development

CBS

3135 Meadow View Dr.
Billings, MT 59102
406.656.2001

George Warmer, CCIM

O: 406 855 8946 | C: 406 855 8946

george@cbcmontana.com



**COLDWELL BANKER
COMMERCIAL**
CBS