

±17.52 ACRES WITH COLD STORAGE FACILITY

EXCLUSIVE LISTING | STATE LAND LEASE | YUMA COUNTY, ARIZONA



LOCATION Property is located on 64E and Palomas Road, 10 miles north of Dateland in Yuma County, Arizona

SIZE ±17.52 acres

PRICE \$1,200,000

TERMS Cash

ZONING Agriculture

UTILITIES ED-8

STATE LEASE #03-92562

COMMENTS

- 53,000 S.F. retired cooler and packing plant with loading docks
- All on concrete foundation
- 25,000 S.F. refrigerated space
- Office building and shop
- 6' high fence surrounding the property

Kirk McCarville | kmccarville@landadvisors.com **Bobby Wuertz** | bwuertz@landadvisors.com

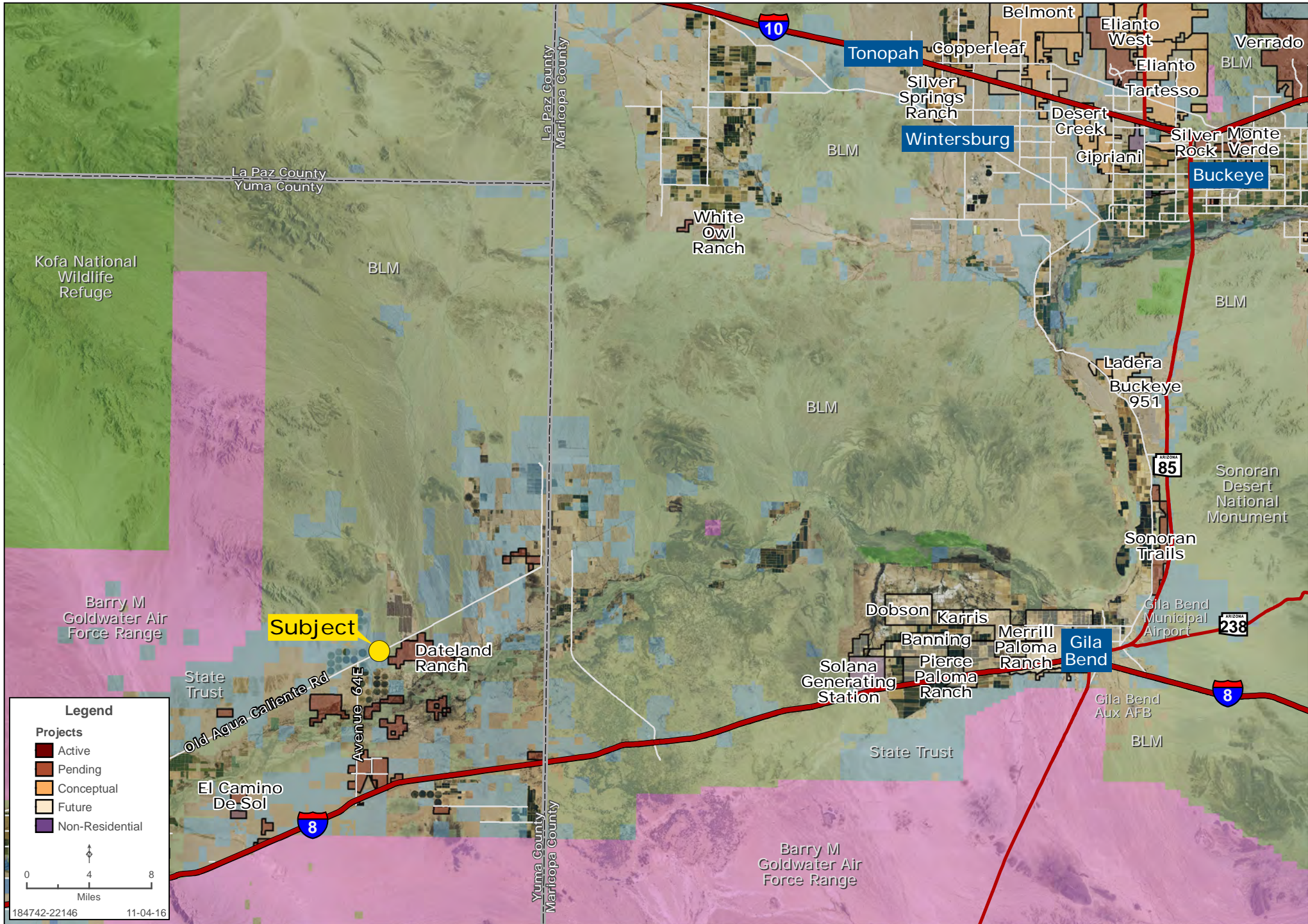
4900 North Scottsdale Road, Suite 3000, Scottsdale, Arizona 85251 ph. 480.483.8100 | www.landadvisors.com

The information contained herein is from sources deemed reliable. We have no reason to doubt its accuracy but do not guarantee it. It is the responsibility of the person reviewing this information to independently verify it. This package is subject to change, prior sale or complete withdrawal. AZYuma184742-4.12.17



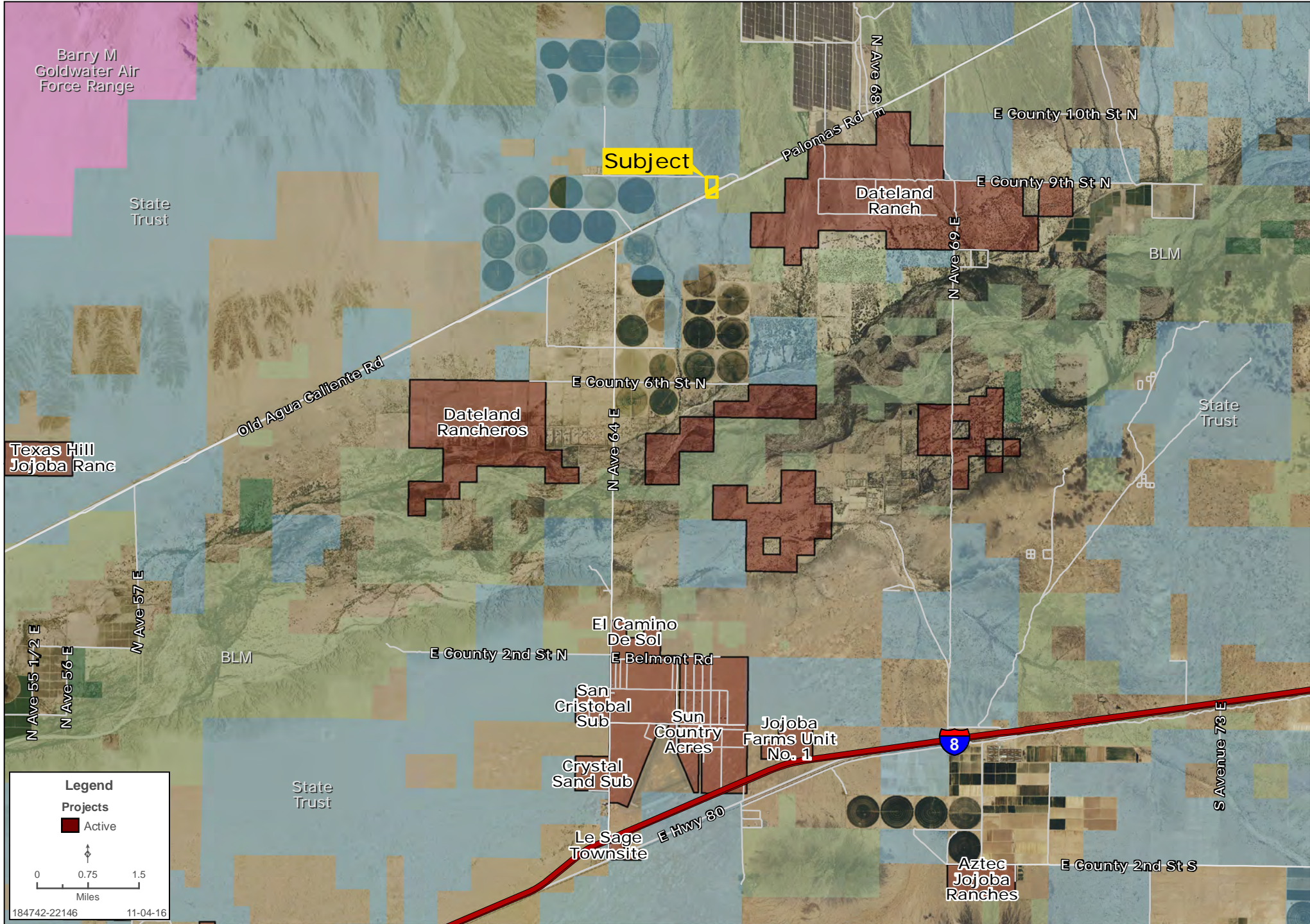
REGIONAL MAP

Kirk McCarville | Bobby Wuertz | 480.483.8100 | www.landadvisors.com



SURROUNDING AREA MAP

Kirk McCarville | Bobby Wuertz | 480.483.8100 | www.landadvisors.com



PROPERTY DETAIL MAP

Kirk McCarville | Bobby Wuertz | 480.483.8100 | www.landadvisors.com



PROPERTY PHOTO



PROPERTY PHOTO



PROPERTY PHOTO

