



[CLICK HERE FOR VIRTUAL TOUR!](#)

1875 UNION STREET
SAN FRANCISCO, 94123
COW HOLLOW DISTRICT

THRILLING RESTAURANT/BAR SPACE!
RARE TYPE 47 LIQUOR LICENSE AVAILABLE

CALL FOR PRICE

NEIGHBORHOOD: COW HOLLOW DISTRICT

BETWEEN LAGUNA & OCTAVIA STREETS

SIZE:

±3,184 SF

RESTAURANT SPACE FOR LEASE

PERCENTAGE LEASE OPPORTUNITY!
INCREDIBLE RESTAURANT LOCATION
SITUATED ON BUSTLING UNION STREET!

RARE AND COVETED TYPE 47 LIQUOR LICENSE ALSO
AVAILABLE FOR PURCHASE FROM EXISTING TENANT!

THIS PREMIER RESTAURANT LOCATION OFFERS:

- *Fantastic Window Lining
- *High Ceilings
- *Solid Foot Traffic
- *Maximum Occupancy: 105 People
(Per Existing Tenant)
- *Type 1 Hood
- *Outdoor Patio
- *Direct Deal

Please Note: Hollow Cow, the existing Tenant, is looking to sell their FF&E and Type 47 Liquor License.



INCORPORATED | EST. 1922

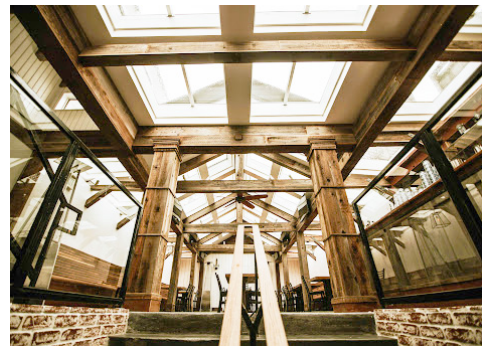
JEREMY BLATTEIS

415.321.7493 | jfb@brsf.co | DRE #01460566

sfretail.net

This Statement with the information it contains is given with the understanding that all negotiations relating to the purchase, renting or leasing of the property described above shall be conducted through Blatteis Realty Company. The above information, while not guaranteed, has been secured from sources believed to be reliable. Blatteis Realty has not verified its accuracy and make no guarantees, warranty or representation regarding this information and it is published subject to the possibility of errors, omissions, changes of listing information including price, term, financing, or withdrawal without notice. We include projections, estimates, opinions and/or assumptions, for example only, and they may not represent current or future performance of the property. You should consult your tax and legal advisors before to verify the validity of estimates. All commercial or mixed-use property presented by Blatteis Realty is subject to local zoning codes and regulations. It is the sole responsibility and liability of tenants and property owners to obtain all applicable required building permits and/or certificates from the local city/town Planning Department before commercial property use can commence or a building can be built.

44 Montgomery Suite 1288, San Francisco, CA 94104 | t: 415.981.2844 | f: 415.981.4986 | info@brsf.co | DRE #01421282



INCORPORATED | EST. 1922

JEREMY BLATTEIS

415.321.7493 | jfb@brsf.co | DRE #01460566

sfretail.net

This Statement with the information it contains is given with the understanding that all negotiations relating to the purchase, renting or leasing of the property described above shall be conducted through Blatteis Realty Company. The above information, while not guaranteed, has been secured from sources believed to be reliable. Blatteis Realty has not verified its accuracy and make no guarantees, warranty or representation regarding this information and it is published subject to the possibility of errors, omissions, changes of listing information including price, term, financing, or withdrawal without notice. We include projections, estimates, opinions and/or assumptions, for example only, and they may not represent current or future performance of the property. You should consult your tax and legal advisors before to verify the validity of estimates. All commercial or mixed-use property presented by Blatteis Realty is subject to local zoning codes and regulations. It is the sole responsibility and liability of tenants and property owners to obtain all applicable required building permits and/or certificates from the local city/town Planning Department before commercial property use can commence or a building can be built.

A TOP SAN FRANCISCO LOCAL & TOURIST DESTINATION FOR SHOPPING, DINING AND ENTERTAINMENT!



EQUINOX



SEPHORA



SOULCYCLE



LUSH COSMETICS



LOVING CUP



LULULEMON



PERRY'S



LORNA JANE



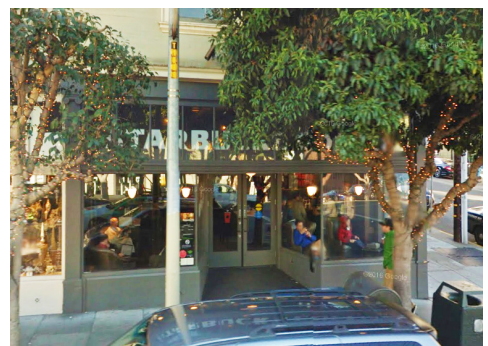
VUORI



WELLS FARGO



WILDSEED



STARBUCKS



INCORPORATED | EST. 1922

JEREMY BLATTEIS

415.321.7493 | jfb@brsf.co | DRE #01460566

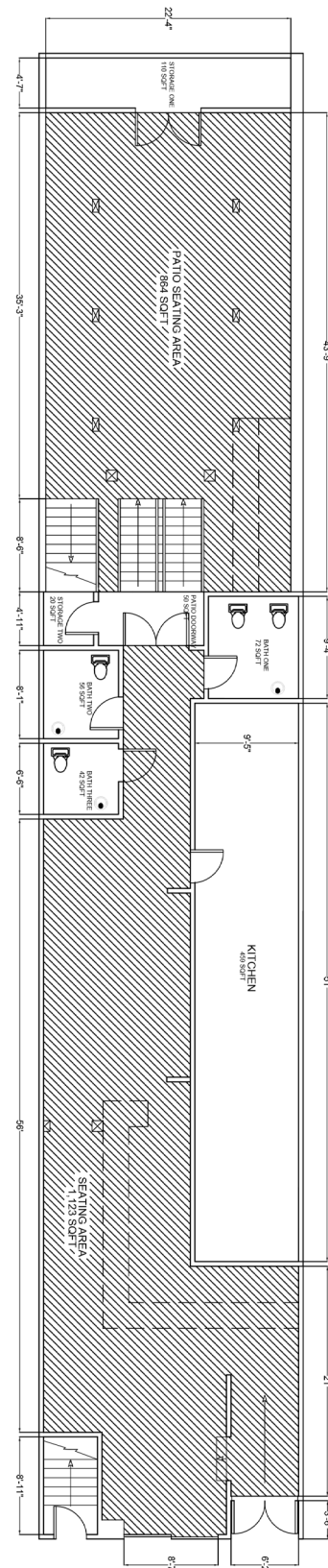
sfretail.net

This Statement with the information it contains is given with the understanding that all negotiations relating to the purchase, renting or leasing of the property described above shall be conducted through Blatteis Realty Company. The above information, while not guaranteed, has been secured from sources believed to be reliable. Blatteis Realty has not verified its accuracy and make no guarantees, warranty or representation regarding this information and it is published subject to the possibility of errors, omissions, changes of listing information including price, term, financing, or withdrawal without notice. We include projections, estimates, opinions and/or assumptions, for example only, and they may not represent current or future performance of the property. You should consult your tax and legal advisors before to verify the validity of estimates. All commercial or mixed-use property presented by Blatteis Realty is subject to local zoning codes and regulations. It is the sole responsibility and liability of tenants and property owners to obtain all applicable required building permits and/or certificates from the local city/town Planning Department before commercial property use can commence or a building can be built.

EXISTING FLOOR PLAN

SCALE 3/32" = 1'

| Area description: | SQFT: |
|---|--------------|
| Storage one | 110 |
| Storage two | 20 |
| lower patio door way | 50 |
| Patio seating(including bar area) | 864 |
| Bath one | 72 |
| Bath two | 56 |
| Bath three | 42 |
| Kitchen | 459 |
| Indoor seating area(including bar area) | 1,123 |
| Total | 2,796 |



INCORPORATED | EST. 1922

JEREMY BLATTEIS

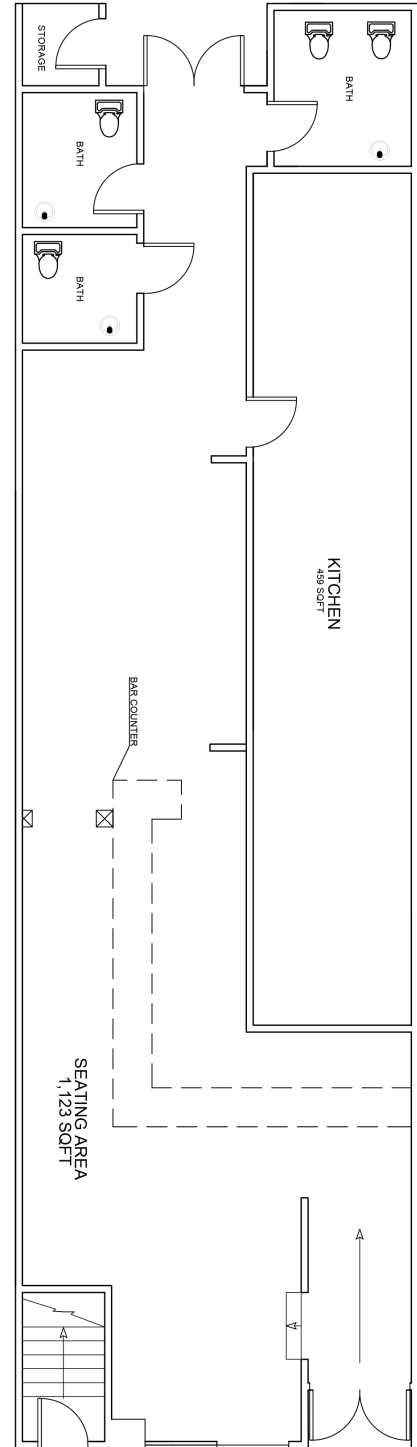
415.321.7493 | jfb@brsf.co | DRE #01460566

sftail.net

This Statement with the information it contains is given with the understanding that all negotiations relating to the purchase, renting or leasing of the property described above shall be conducted through Blatteis Realty Company. The above information, while not guaranteed, has been secured from sources believed to be reliable. Blatteis Realty has not verified its accuracy and make no guarantees, warranty or representation regarding this information and it is published subject to the possibility of errors, omissions, changes of listing information including price, term, financing, or withdrawal without notice. We include projections, estimates, opinions and/or assumptions, for example only, and they may not represent current or future performance of the property. You should consult your tax and legal advisors before to verify the validity of estimates. All commercial or mixed-use property presented by Blatteis Realty is subject to local zoning codes and regulations. It is the sole responsibility and liability of tenants and property owners to obtain all applicable required building permits and/or certificates from the local city/town Planning Department before commercial property use can commence or a building can be built.

INDOOR FLOOR PLAN

SCALE $\frac{1}{8}" = 1'$



INCORPORATED | EST. 1922

JEREMY BLATTEIS

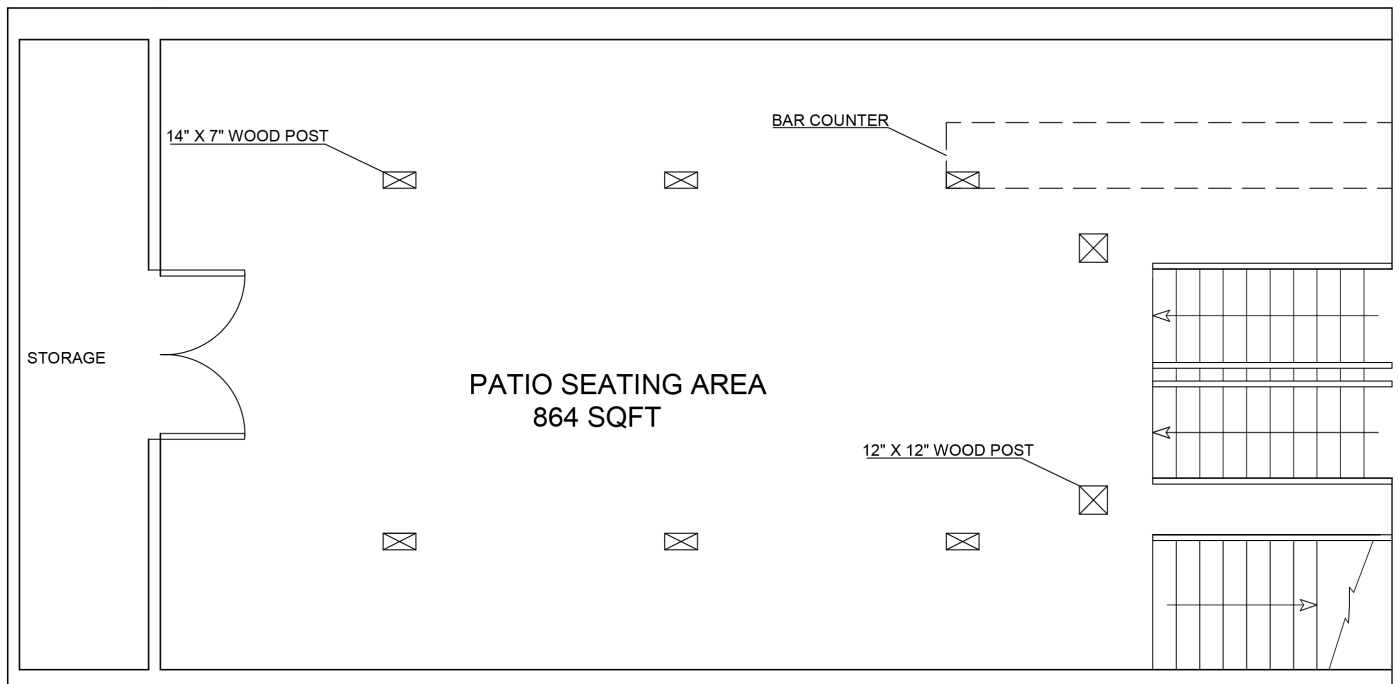
415.321.7493 | jfb@brsf.co | DRE #01460566

sfretail.net

This Statement with the information it contains is given with the understanding that all negotiations relating to the purchase, renting or leasing of the property described above shall be conducted through Blatteis Realty Company. The above information, while not guaranteed, has been secured from sources believed to be reliable. Blatteis Realty has not verified its accuracy and make no guarantees, warranty or representation regarding this information and it is published subject to the possibility of errors, omissions, changes of listing information including price, term, financing, or withdrawal without notice. We include projections, estimates, opinions and/or assumptions, for example only, and they may not represent current or future performance of the property. You should consult your tax and legal advisors before to verify the validity of estimates. All commercial or mixed-use property presented by Blatteis Realty is subject to local zoning codes and regulations. It is the sole responsibility and liability of tenants and property owners to obtain all applicable required building permits and/or certificates from the local city/town Planning Department before commercial property use can commence or a building can be built.

PATIO FLOOR PLAN

SCALE 3/16" = 1'



INCORPORATED | EST. 1922

JEREMY BLATTEIS

415.321.7493 | jfb@brsf.co | DRE #01460566

sfretail.net

This Statement with the information it contains is given with the understanding that all negotiations relating to the purchase, renting or leasing of the property described above shall be conducted through Blatteis Realty Company. The above information, while not guaranteed, has been secured from sources believed to be reliable. Blatteis Realty has not verified its accuracy and make no guarantees, warranty or representation regarding this information and it is published subject to the possibility of errors, omissions, changes of listing information including price, term, financing, or withdrawal without notice. We include projections, estimates, opinions and/or assumptions, for example only, and they may not represent current or future performance of the property. You should consult your tax and legal advisors before to verify the validity of estimates. All commercial or mixed-use property presented by Blatteis Realty is subject to local zoning codes and regulations. It is the sole responsibility and liability of tenants and property owners to obtain all applicable required building permits and/or certificates from the local city/town Planning Department before commercial property use can commence or a building can be built.

UNION STREET TENANT MAP

GOUGH TO STEINER

FOR MORE LISTINGS,
VISIT SFRETAIL.NET

| | |
|----------------------------------|------|
| California Weight Clinic | 1700 |
| Guzel Jewelry Design | 1714 |
| Union French Cleaners | 1718 |
| Available Retail Space for Lease | 1728 |
| Dermaplus Skin + Body | |
| Current Clothing | 1738 |
| Dermal Essentials | |
| Urban Green Investments | 1746 |
| Moulin Pooch | 1750 |
| Strip Wax Bar | 1764 |
| Pink Bunny | 1772 |
| Chic Nails Salon | |
| Dazzle Bar | 1782 |
| Dantone Boutique | 1784 |
| Palm Acai Cafe | 1796 |

| | |
|------|--------------------------------|
| 1715 | Pane e Vino Trattoria |
| 1725 | Crunch Fitness |
| 1735 | CryoSF |
| 1737 | City Living SF |
| 1739 | TC Jewelers |
| | Retail Space for Lease |
| 1745 | VW Nail Care |
| 1747 | Cow Hollow Shoe Repair |
| 1749 | Chez Berlue, Partners in Crime |
| 1757 | Salon Macias, Red Union Salon |
| 1763 | Marina Dental Care |
| 1771 | ML Hair Studio |
| 1775 | The Lotus Method |
| 1785 | Roam Artisan Burgers |
| 1787 | Available Restaurant Space |
| 1793 | Veo Optics |

OCTAVIA STREET

| | |
|---|------|
| GetzWell Pediatrics | 1800 |
| Organic Shimmer | 1804 |
| SF Color Collective | 1808 |
| Bare Beauty Lounge | 1810 |
| Available Retail Space for Lease | 1814 |
| Available Salon Space for Lease | 1816 |
| Tonal Gym | 1824 |
| Sprout | 1828 |
| Caffe Union | 1830 |
| Available Retail Space for Lease | 1832 |
| KAIYO | 1838 |
| Topdrawer | 1840 |
| O'Dette Mortgage Group | 1842 |
| G Grover Interiors | 1844 |
| Morning Lavender | 1846 |
| Nanskin, Limited Watches, Inc., Various Office Spaces | 1850 |
| Ambiance | 1858 |
| Shannon Leahy Events | 1862 |
| Kryolan City San Francisco | 1864 |
| Retail Space | 1870 |
| UNTUCKit | 1872 |
| Laser Away | 1878 |
| Available Retail Space for Lease | 1882 |
| | 1888 |
| Yoga Flow SF | 1892 |
| Neomodern | 1898 |

| | |
|------|--|
| 1801 | Fenzi Uomo |
| 1803 | B&A Estate |
| 1809 | Capannina |
| 1815 | Acorn Home Furnishings & Design |
| 1823 | One Medical |
| 1825 | SKIN Medical Spa |
| 1827 | Winnie Couture |
| 1829 | LA Paul & Associates, BACK OF THE HOUSE, Inc. |
| 1831 | Alma's European Skincare |
| 1833 | Carats & Stones, KTD Fine Jewelers |
| 1837 | Candid Studio |
| 1843 | Available Retail Space for Lease |
| 1849 | Tamashisoul Sushi Bar |
| 1851 | Available Bar Space for Lease |
| 1861 | Available Retail Space for Lease |
| 1869 | Jest Jewels |
| 1875 | Available Restaurant Space for Lease |
| 1877 | Drip Doctors (Medical Spa) |
| 1887 | Sunglass Hut |
| 1889 | Berenice Hair Salon, Thermal Reconditioning SF |
| 1895 | Doob Group |
| 1899 | Starbucks |

1875 UNION STREET



LAGUNA STREET



| | |
|---|------|
| Wells Fargo Bank | 1900 |
| Karma Yoga | 1906 |
| Public Parking | 1910 |
| Birdies | 1934 |
| Available Office Space for Lease | 1936 |
| Available Retail Office Space for Lease | 1942 |
| Perry's | 1944 |
| State Farm Insurance | 1952 |
| Lashfully, The Caviar Co., | 1954 |
| Various Medical Offices | 1956 |
| Redmint | 1958 |
| Bonobos | 1964 |
| | 1974 |
| Available Retail Space for Lease | 1980 |
| Available Salon/Office Space for Lease | |
| Extreme Pizza, The Stylist SF | |
| Solstice and Bar None | |
| Juice Shop | 1994 |
| Arthur Sebastian Hair Salon, Brown Sugar Boutique | 1996 |
| Gio Gelati | 1998 |

| | |
|------|---------------------------------------|
| 1901 | Bus Stop Saloon |
| 1905 | Oxygen Massage, Flourish Skin and Wax |
| 1907 | Available Retail Space for Lease |
| 1909 | Epicurean Trader |
| 1909 | La Boulangerie |
| 1919 | Italian Homemade Co. |
| 1929 | Office Space for Lease |
| 1931 | Union Street Jewelers, |
| 1933 | Zen Beauty Spa, Jinza Couture |
| 1943 | Dreamy Angels |
| 1945 | B Brow Lounge |
| 1947 | HELPER'S Artisan Bazaar |
| 1949 | Mabel Chong |
| 1951 | Closet 1951 |
| 1957 | Urban Remedy |
| 1969 | Dahlia, High Society, Golden Lotus |
| 1977 | Vegan Picnic, Pacific Heights Place |
| 1979 | The Blue Light |
| 1981 | Lululemon Athletica |
| 1995 | Bank of America |

LA BOULANGERIE
- SAN FRANCISCO -



BUCHANAN STREET

wildseed

vuori

LORNA JANE
ACTIVE LIVING

| | |
|---|------|
| Wildseed | 2000 |
| Marcello Watches, The Barber Shop | 2030 |
| Palm House, Union Street Shoe Repair | 2032 |
| Impact Builders, LLC | 2034 |
| Images of the North | 2036 |
| Milvali Salon, Rosewater Skin Care | 2040 |
| Titika Active Couture | 2042 |
| The Naked Market, G T Financial Group | 2044 |
| West Coast Leather, Cucealon Orthodontics | 2060 |
| Various Chiropractic Offices | 2064 |
| Le Marcel Bakery | 2066 |
| | |
| Vuori | 2070 |
| Titika Active Couture | 2072 |
| | 2078 |
| Evolve Therapy | 2082 |
| B12 LOVE | 2086 |
| Various Retail Spaces | 2088 |
| Lorna Jane | 2090 |

| | |
|------|--|
| 2001 | Union Street Plaza & Garage |
| | Comerica Bank, Firuze |
| | Shaw Shoes, Hunan Empire |
| | ARTEMIA Communications Inc |
| | |
| 2001 | Various Commercial and Medical Offices |
| 2031 | Upscale Construction |
| | FolioAvenue Publishing Service |
| | Bien-Etre Beaute, Mina's Tailor Studio, |
| | Greenforce Clean Team, Luxe Premier Travel |
| 2033 | Available Restaurant Space for Lease |
| 2035 | Available Retail Space for Lease |
| 2055 | Equinox, illy Caffè, Earthbar |
| 2071 | Kühl |
| 2083 | Sephora |
| 2087 | Serenity Wellness Spa |
| 2095 | Soul Cycle |

EQUINOX
SEPHORA
SOULCYCLE

WEBSTER STREET

| | |
|---|------|
| See Eyewear | 2100 |
| Available Retail Space for Lease | 2102 |
| Practice SF Yoga - Might Minds | 2104 |
| Equity One | 2106 |
| Lush | 2116 |
| Anchor Mediation | 2118 |
| Available Retail Space for Lease | 2120 |
| Hint, Inc., Reid's Tailoring, Marla Dell Talent | 2124 |
| Available Restaurant Space for Lease | 2136 |
| Brixton | 2140 |
| Available Retail Space for Lease | 2150 |
| Available Retail Space for Lease | 2154 |
| Verizon, Pressed Juicery | 2162 |
| Union Street Papery | 2166 |
| Alana Leigh Designs | |
| Casper Mattress | 2174 |
| Little Gem | 2184 |
| Luke's Grocery | 2190 |
| Michael's Wine & Spirits | 2198 |

| | |
|------|--|
| 2101 | Retail/Office Space |
| 2103 | Available |
| 2107 | For Lease |
| 2113 | Lash and Lab |
| 2115 | Joy Joy Nail |
| 2117 | Motion Wireless & Gifts |
| 2127 | isalis, Available Retail Space for Lease |
| 2133 | Available Retail Space for Lease |
| 2135 | AT&T Store |
| 2147 | Available Retail Space for Lease |
| 2149 | Anomie, ATYS Contemporary Living |
| 2157 | Jo Malone |
| 2159 | Available Retail Space for Lease |
| 2161 | Vera Weiler Electrolysis |
| 2163 | Available Retail Space for Lease |
| 2165 | West Coast Wine & Cheese, Gunilla Skin Butik |
| 2167 | STYLEDASH Beauty Lounge |
| 2181 | The Sill, Balanced Bites |
| 2185 | Cameron James Salon |
| 2187 | Available Retail Space for Lease |
| 2189 | Eyes in Disguise |
| 2191 | Union Street Coffee Roastery |

FILLMORE STREET

| | |
|---|------|
| Prudential California Realty, The Bud Stop | 2200 |
| Law Offices | 2204 |
| 1887 Dance Shop | 2206 |
| Allstate Insurance | 2208 |
| Retail Space Available for Lease | 2224 |
| Ace Physical Therapy | 2238 |
| Wanderlust Salon, Bella Bridesmaid, | 2250 |
| Jutta Reichart Associates, Union Street Dental Care | |
| Available Retail Space for Lease | 2254 |
| True Jerkey, Lovely Bride | 2266 |
| Lili Henry - Personal Fashion Stylist | 2272 |
| Available Retail Space for Lease | 2274 |
| 2nd Floor Office Space for Lease | 2276 |
| Danielle | 2278 |
| Legal Offices | 2280 |
| Various Clinical Offices | 2282 |
| Bamboo Wellness Salon | 2284 |
| Great Tan | 2286 |
| eSalon | 2288 |
| Jenkins Garage Door Repair | 2292 |
| Rose's Cafe | 2298 |

| | |
|------|--|
| 2201 | Loving Cup |
| 2203 | Images For Hair |
| 2205 | Le Bouquet Flower Shop |
| 2213 | Nails 2001 |
| 2217 | Sofa U Love |
| 2223 | Gamine |
| 2225 | Various Clinical Services, The Pure Skin |
| 2229 | Union Street Inn |
| 2247 | Teevan Restoration |
| 2253 | Available Retail Space for Lease |
| 2263 | Mishka Dog Boutique |
| 2271 | Wrecking Ball Coffee Roasters |
| 2277 | GALA Boutique |
| 2285 | Neja Cosmetics |
| 2289 | Fondue Lab |
| 2299 | Marina Submarine |