

TROPHY SINGLE TENANT

RETAIL/FITNESS SPACE ON LARCHMONT BLVD

FOR LEASE



147 N. LARCHMONT BLVD, HANCOCK PARK, CA 90004

147 N. LARCHMONT BLVD HANCOCK PARK, CA 90004

SINGLE TENANT RETAIL/FITNESS WITH:

±4,500 SF OF GROUND FLOOR SPACE
(ADDITIONAL ±1,000 SF
2ND FLOOR OFFICE AVAILABLE)
17 SURFACE PARKING SPACES
RENT: INQUIRE WITH BROKERS
NNN: ±\$0.75 PSF FOR 2019
AVAILABLE IMMEDIATELY

*POP UPS/
SHORT TERM
AVAILABLE

Rare Opportunity

Larchmont Blvd is one of the best pedestrian streets in Los Angeles with tons of restaurants, cafes, & retail boutiques

Flagship Location

The largest retail space on Larchmont (double lot with maximum frontage/identity), located on the absolute 50 yard line, with a crosswalk directly in front of the building

Superb Demographics

Located in the heart of prestigious Hancock Park and surrounded by multi-million dollar homes, Hollywood, Koreatown, & numerous entertainment studios

Parking

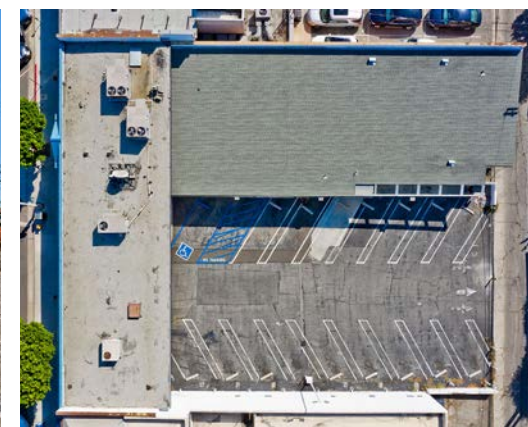
Surface parking lot with 17 dedicated spaces - best parking ratio on the block.

Foot Traffic

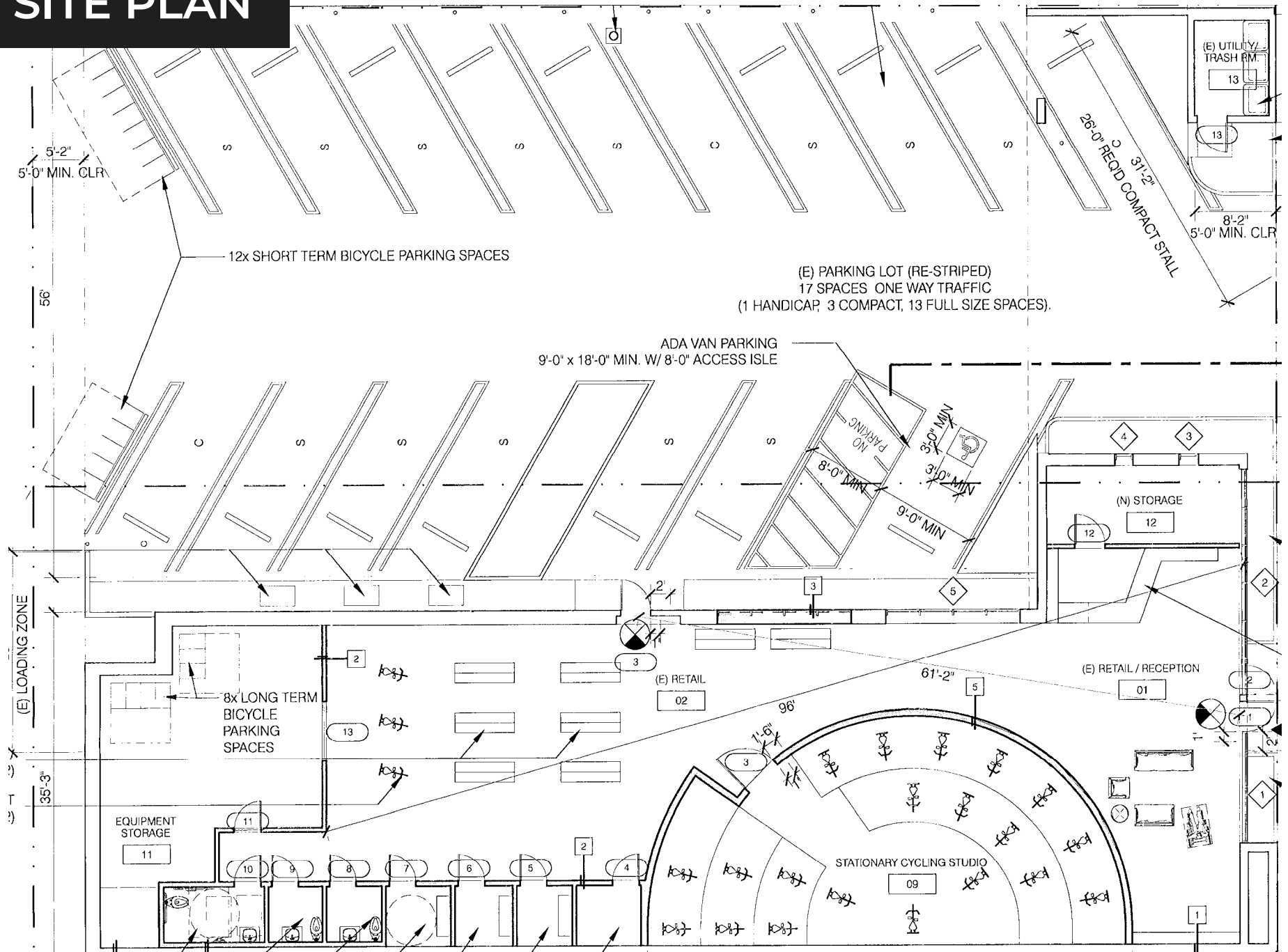
Larchmont Blvd is one of the most walkable streets in Los Angeles with seven-day/week pedestrian traffic



MORE
PHOTOS



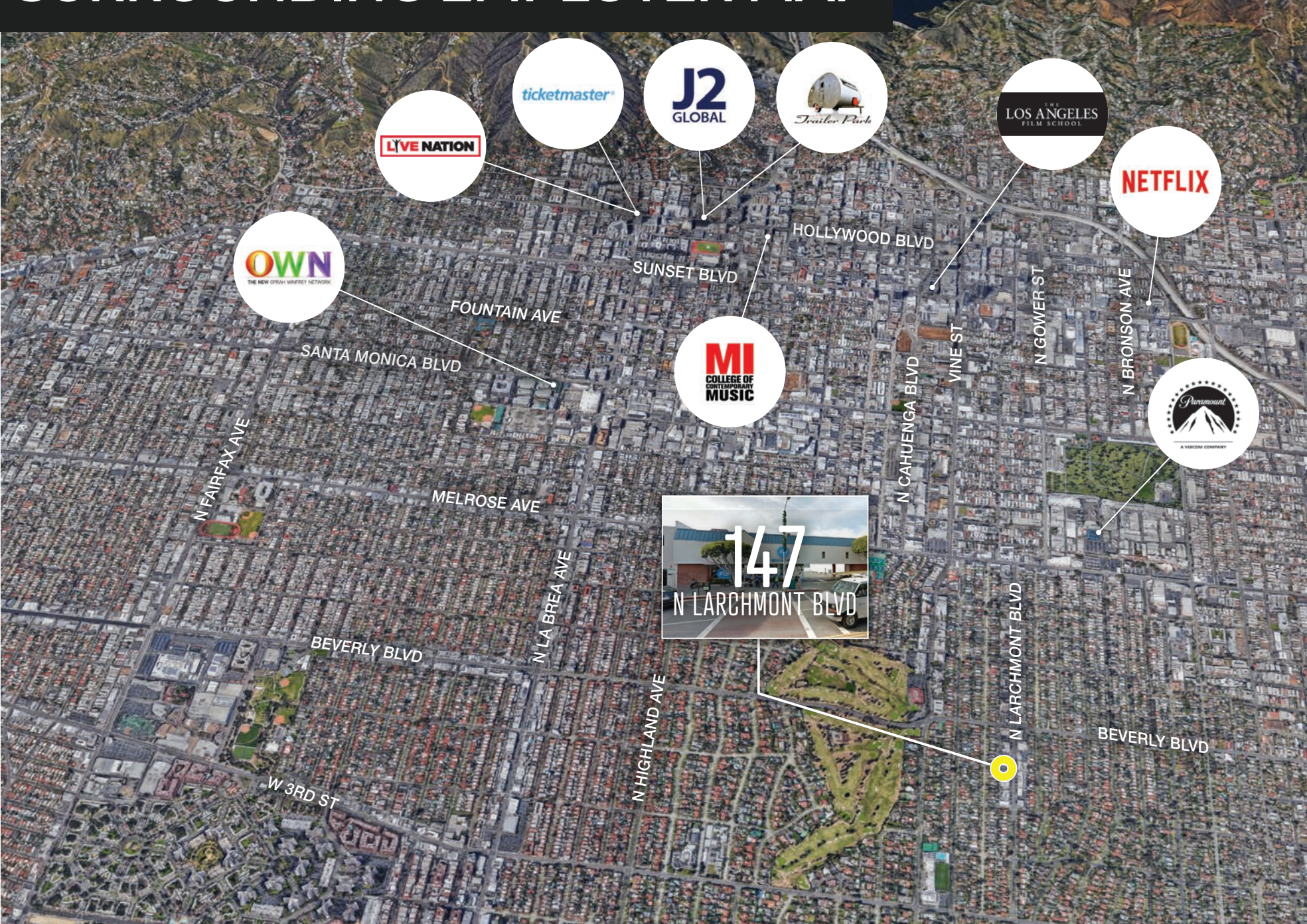
SITE PLAN



STREET MAP



SURROUNDING EMPLOYER MAP



DEMOGRAPHICS

MEDIAN AGE

39.6 (1 mile)

38.1 (3 mile)

37.9 (5 mile)

ESTIMATED HOUSEHOLDS

16,919 (1 mile)

249,606 (3 mile)

464,463 (5 mile)

AVG. HOUSEHOLD INCOME

\$97,863 (1 mile)

\$73,108 (3 mile)

\$77,774 (5 mile)

ESTIMATED POPULATION

41,884 (1 mile)

594,054 (3 mile)

1,142,990 (5 mile)

TOTAL EMPLOYEES

23,131 (1 mile)

252,821 (3 mile)

672,633 (5 mile)

MEDIAN HOME VALUE

\$1,000,691 (1 mile)

\$881,814 (3 mile)

\$818,752 (5 mile)



AERIAL



AERIAL





**COMMERCIAL
ASSET GROUP**

DAVID ASCHKENASY

P 310.272.7381
davida@cag-re.com
Lic. 01714442

JEREMY WINTNER

P 310.272.7390
jeremy@cag-re.com
Lic. 02062054



DANIEL CHIPRUT

P 310.272.7391
daniel@cag-re.com
Lic. 01808709



JAY LUCHS

P 310.407.6585
jay.luchs@ngkf.com
Lic. 01260345

