



THE PIONEER BUILDING

## Office space Available in Park City

### Property Highlights

- **Third Level**
  - Suite 302: 600 SF
  - Suite 305: 755 SF
- **\$16 NNN**



### Demographics

	1 Mile	3 Mile	5 Mile
<b>Population</b>			
2015 Estimated Population	4,797	9,450	18,383
2021 Projected Population	5,197	10,275	21,348
<b>Households</b>			
2016 Estimated Households	1,661	3,546	6,777
2021 Projected Households	1,795	3,850	7,800
2016 Est. Median HH Income	\$83,883	\$89,893	\$94,772
2016 Est. Average HH Income	\$115,822	\$123,261	\$126,209
2016 Est. Per Capita HH Income	\$41,214	\$46,264	\$46,598

Source: U.S. Census Bureau, Census 2010 Data. Esri forecasts for 2016 and 2021.

**Steve Hooker**  
Director  
+1 435 575 5607  
shooker@comre.com

1794 Olympic Parkway, Suite 130  
Park City, Utah 84098  
Main +1 435 575 5600  
Fax +1 435 575 5640  
**comre.com**

*Independently Owned and Operated / A Member of the Cushman & Wakefield Alliance*

Cushman & Wakefield Copyright 2017. No warranty or representation, express or implied, is made to the accuracy or completeness of the information contained herein, and same is submitted subject to errors, omissions, change of price, rental or other conditions, withdrawal without notice, and to any special listing conditions imposed by the property owner(s). As applicable, we make no representation as to the condition of the property (or properties) in question.  
(path: G:\1 - Projects\Park City Office\Hooker.Steve\1 - Flyers\1910ProspectorAve)



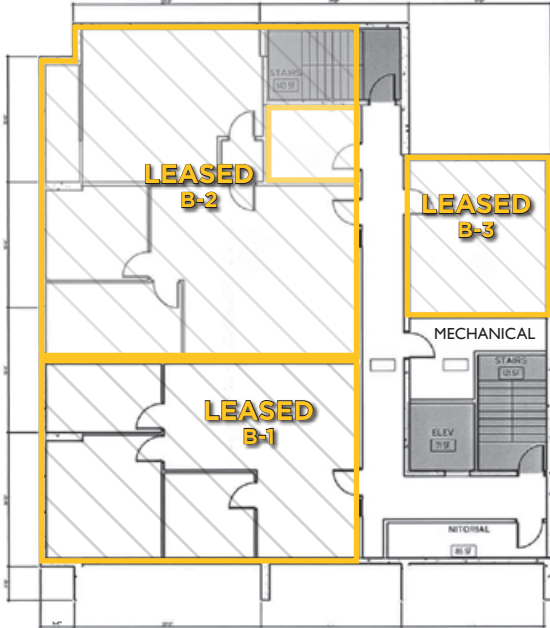
**CUSHMAN &  
WAKEFIELD**  
Commerce

FOR LEASE OR SUBLEASE

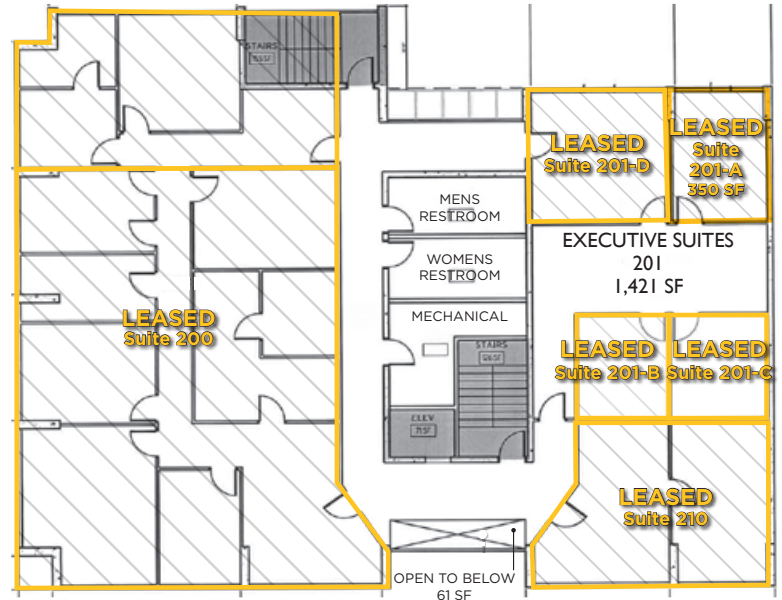
**1910 Prospector Avenue**

Park City, Utah 84060

**Basement**

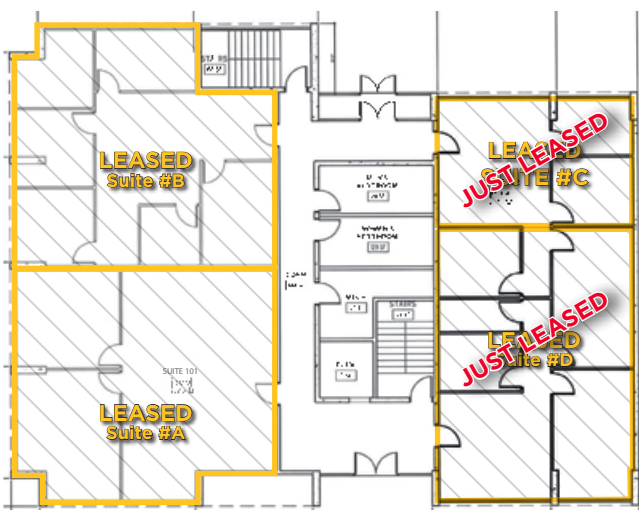


**2<sup>nd</sup> Level**

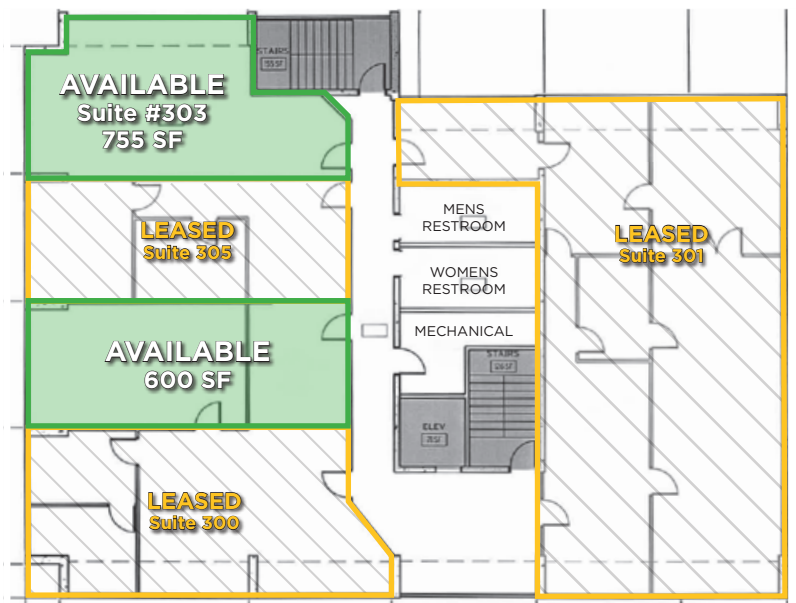


 **AVAILABLE**  
 **LEASED**

**Main Level**



**3<sup>rd</sup> Level**



**Steve Hooker**  
Director  
+1 435 575 5607  
shooker@comre.com

1794 Olympic Parkway, Suite 130  
Park City, Utah 84098  
Main +1 435 575 5600  
Fax +1 435 575 5640  
**comre.com**

*Independently Owned and Operated / A Member of the Cushman & Wakefield Alliance*

Cushman & Wakefield Copyright 2017. No warranty or representation, express or implied, is made to the accuracy or completeness of the information contained herein, and same is submitted subject to errors, omissions, change of price, rental or other conditions, withdrawal without notice, and to any special listing conditions imposed by the property owner(s). As applicable, we make no representation as to the condition of the property (or properties) in question.  
(path: G:\1 - Projects\Park City Office\Hooker.Steve\1 - Flyers\1910ProspectorAve)