

TRF Pacific, LLC, 2620 Second Avenue, Seattle, Washington 98121
Phone: 206.985.0100 • Fax: 206.985.0102 • Email: info@trfpac.com

Downtown Woodinville

13930 NE 178th Avenue NE
Woodinville, Washington 98072

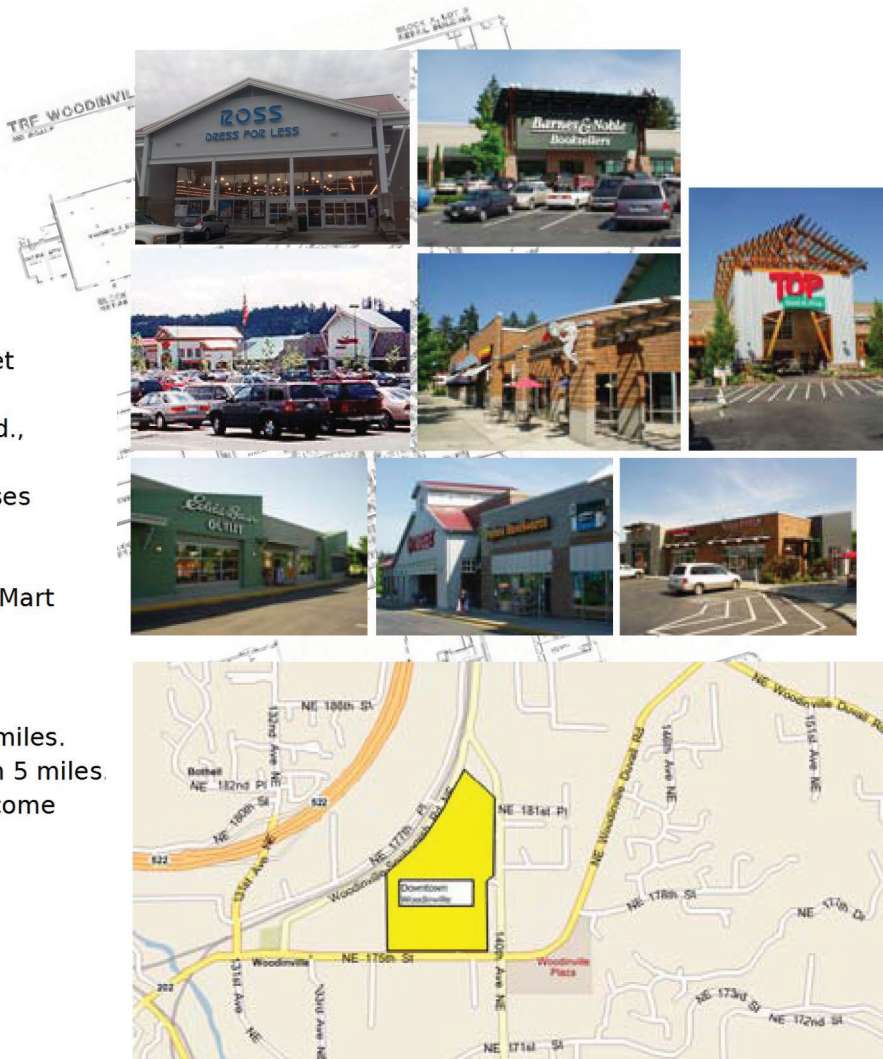
Year Built: 1996

Buildings: 12

Total SF: 448,000

Features:

- NW Corner of 175th Street & 140th Ave.
- Access from Wood/Sno Rd., 175 & 140th.
- Many successful businesses located here.
- Anchors include Top Food and Drug, PetsMart, Barnes & Noble, Target, AMC Theaters, Cost Plus, Ross Dress for Less
- 182,668 People within 5 miles.
- 70,066 Households within 5 miles.
- \$100,517 Average HH income within 5 miles.



DEMOGRAPHICS

Downtown Woodinville

	1 mile	3 mile	5 mile
Population			
Estimated (2009)	7,199	65,540	182,668
Census (2000)	5,990	57,492	162,991
Households			
Estimated (2009)	2,996	24,854	70,066
Census (2000)	2,500	21,689	62,360
Average Household \$			
Est. Average (2009)	\$82,409	\$98,819	\$100,517
Census (2014)	\$89,513	\$107,812	\$109,953
Median Household \$			
Est. Median (2009)	\$71,065	\$83,645	\$85,584
Census (2014)	\$76,608	\$90,467	\$92,709

For more information contact:

Rick Parks 206-985-0107

The information supplied herein is from sources we deem reliable. It is provided without any representation warranty or guarantee expressed or implied as to the accuracy. Prospective Buyers or Tenant should conduct an independent investigation and verification of all matters deemed to be material including but not limited to statements of income and expenses. CONSULT YOUR ATTORNEY ACCOUNTANT OR OTHER PROFESSIONAL ADVISOR.

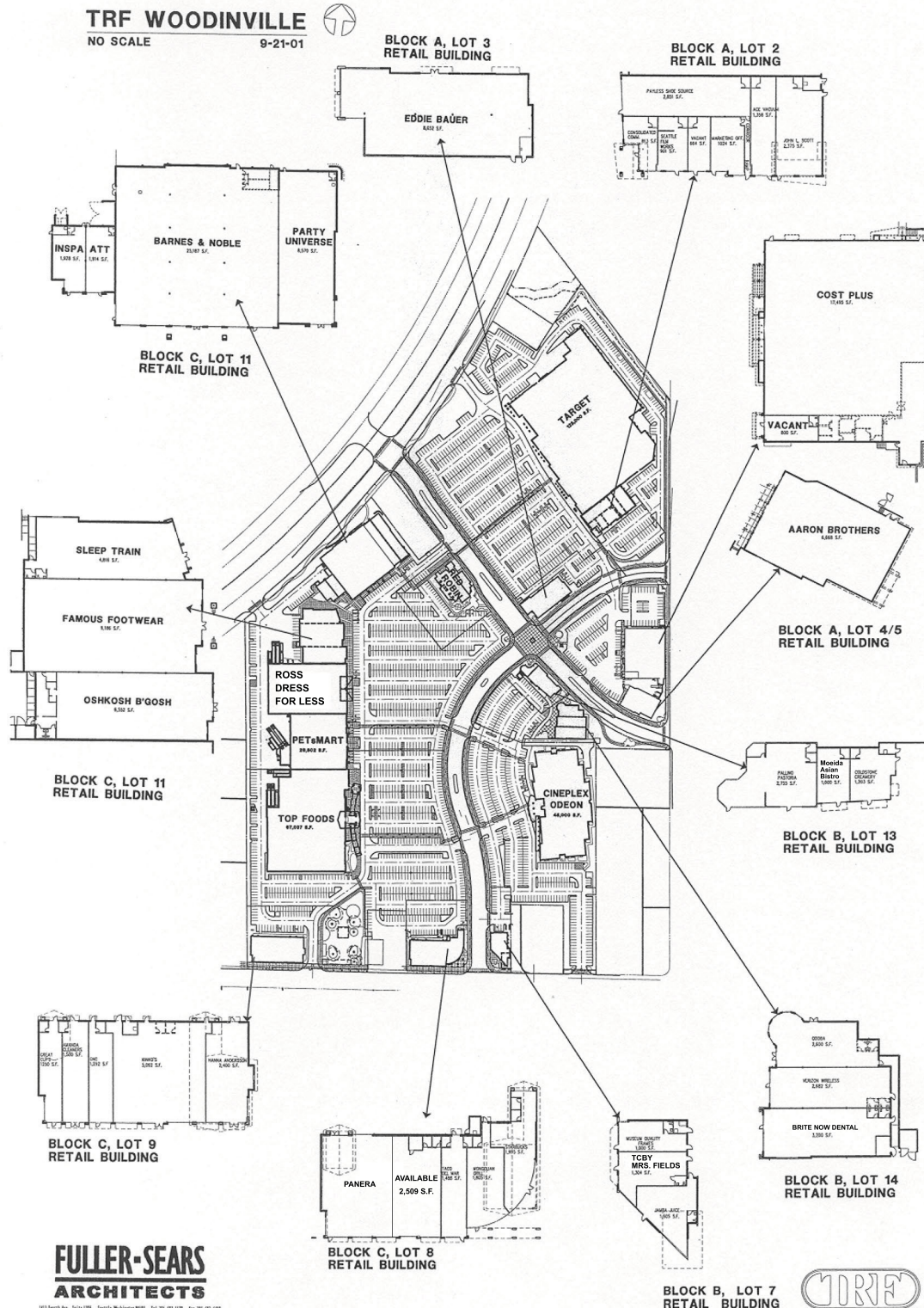


Commercial Real Estate
SINCE 1975

Properties Managed PAGE 2

TRF Pacific, LLC, 2620 Second Avenue, Seattle, Washington 98121
Phone: 206.985.0100 • Fax: 206.985.0102 • Email: info@trfpac.com

Downtown Woodinville



The information supplied herein is from sources we deem reliable. It is provided without any representation warranty or guarantee expressed or implied as to the accuracy. Prospective Buyers or Tenant should conduct an independent investigation and verification of all matters deemed to be material including but not limited to statements of income and expenses. CONSULT YOUR ATTORNEY ACCOUNTANT OR OTHER PROFESSIONAL ADVISOR.