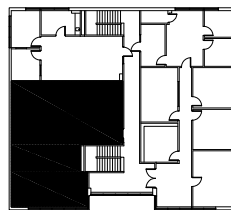
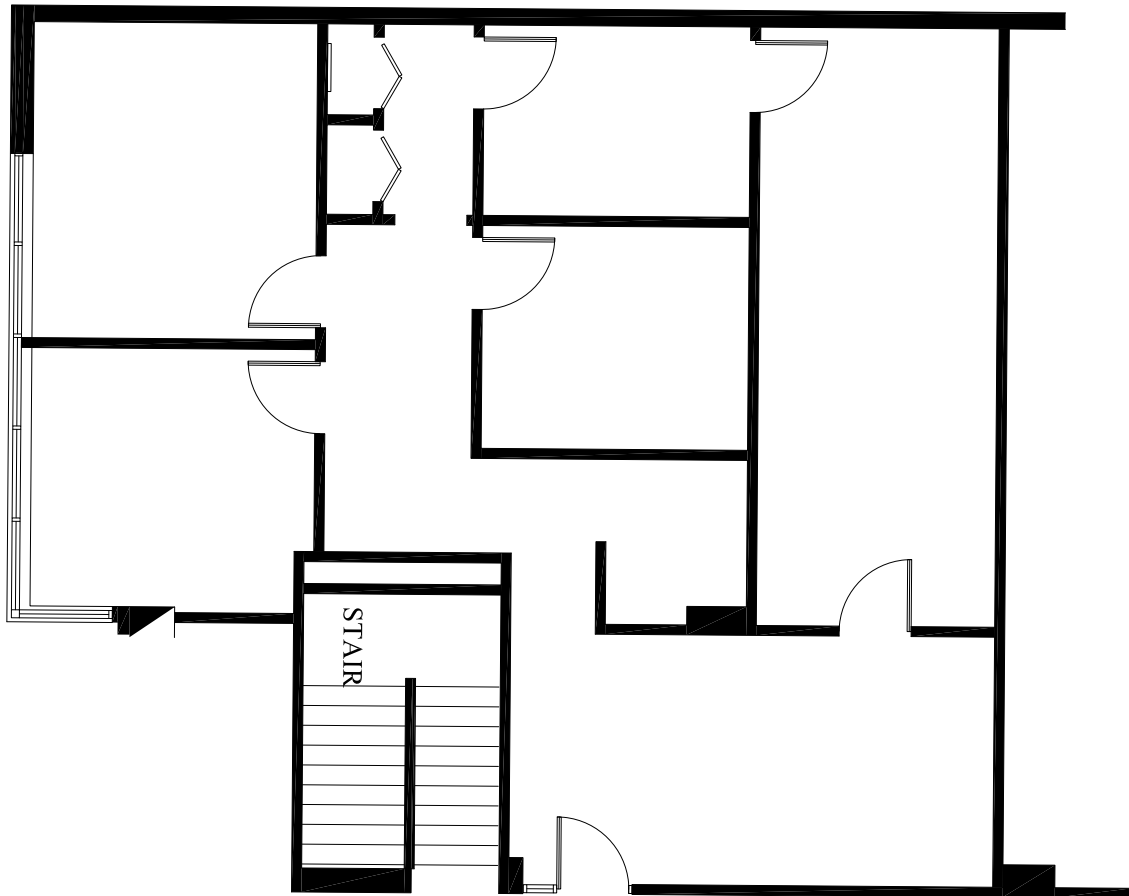


COMMERCE PARK

8405 Sterling, Irving, Texas

SUITE 202

1,417 RSF



2ND FLOOR

For More Information About
Leasing Contact:

Kolby Dickerson at [214-534-1599](tel:214-534-1599) or kdickerson@txreproperties.com

Justin Smith at [214-207-7173](tel:214-207-7173) or jsmith@txreproperties.com