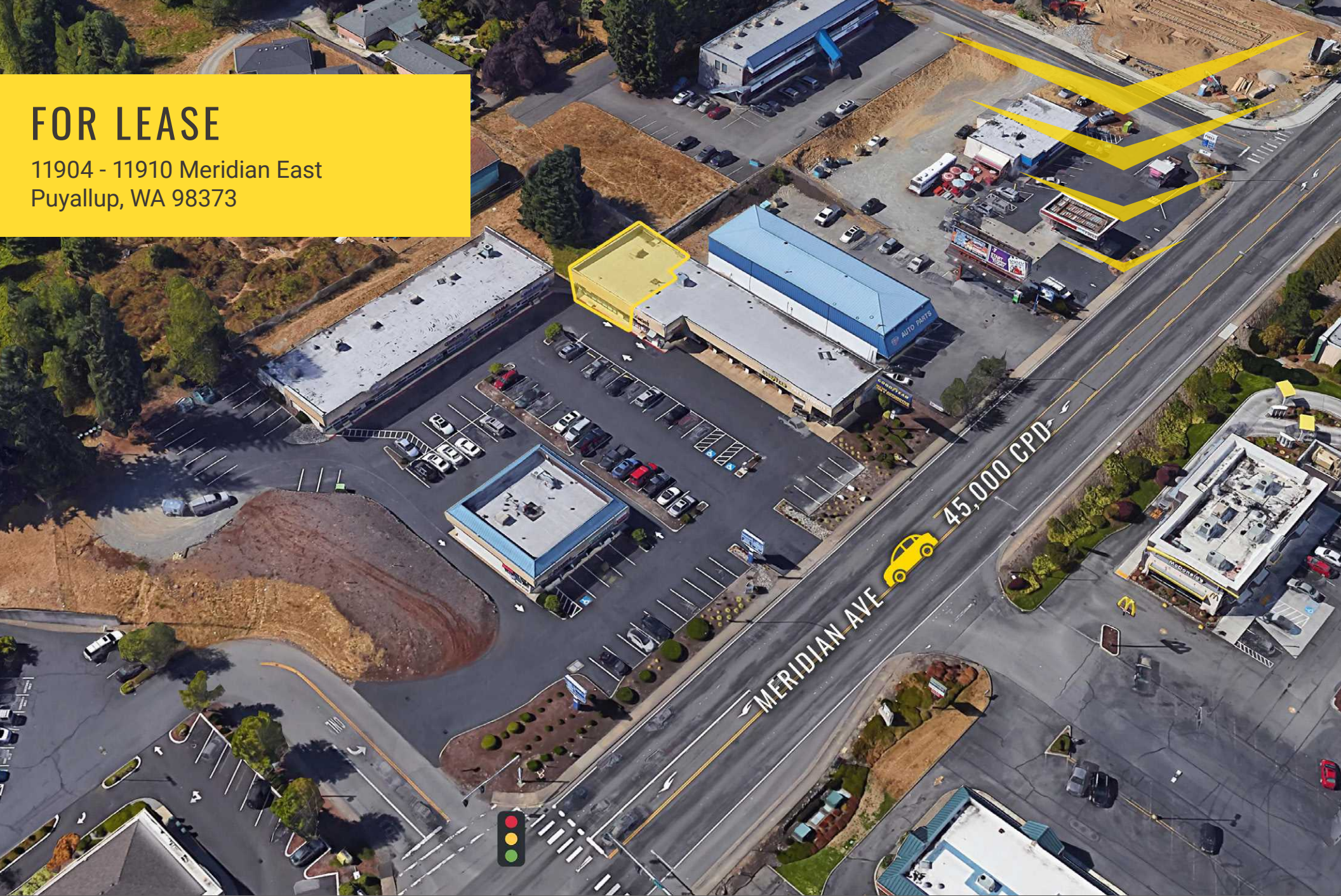


# FOR LEASE

11904 - 11910 Meridian East  
Puyallup, WA 98373



## MERIDIAN SQUARE

Blake Weber | Tim Weber | Don Whittles

First Western Properties—Tacoma Inc. | 253.472.0404  
6402 Tacoma Mall Blvd, Tacoma, WA 98409 | fwp-inc.com

11904 - 11910 MERIDIAN EAST:

1,918 SF \$22.00 PSF

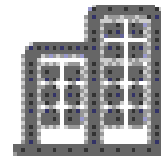
- Pylon signage available
- Located on South Hill Meridian with high traffic volume
- Close to South Hill Mall, Walgreens, Starbucks, YMCA and other major retailers!



Population



Average HH Income



Daytime Population

Regis - 2019

	Population	Average HH Income	Daytime Population
Mile 1	9,886	\$79,363	9,851
Mile 3	85,306	\$95,818	54,916
Mile 5	174,014	\$96,653	102,563

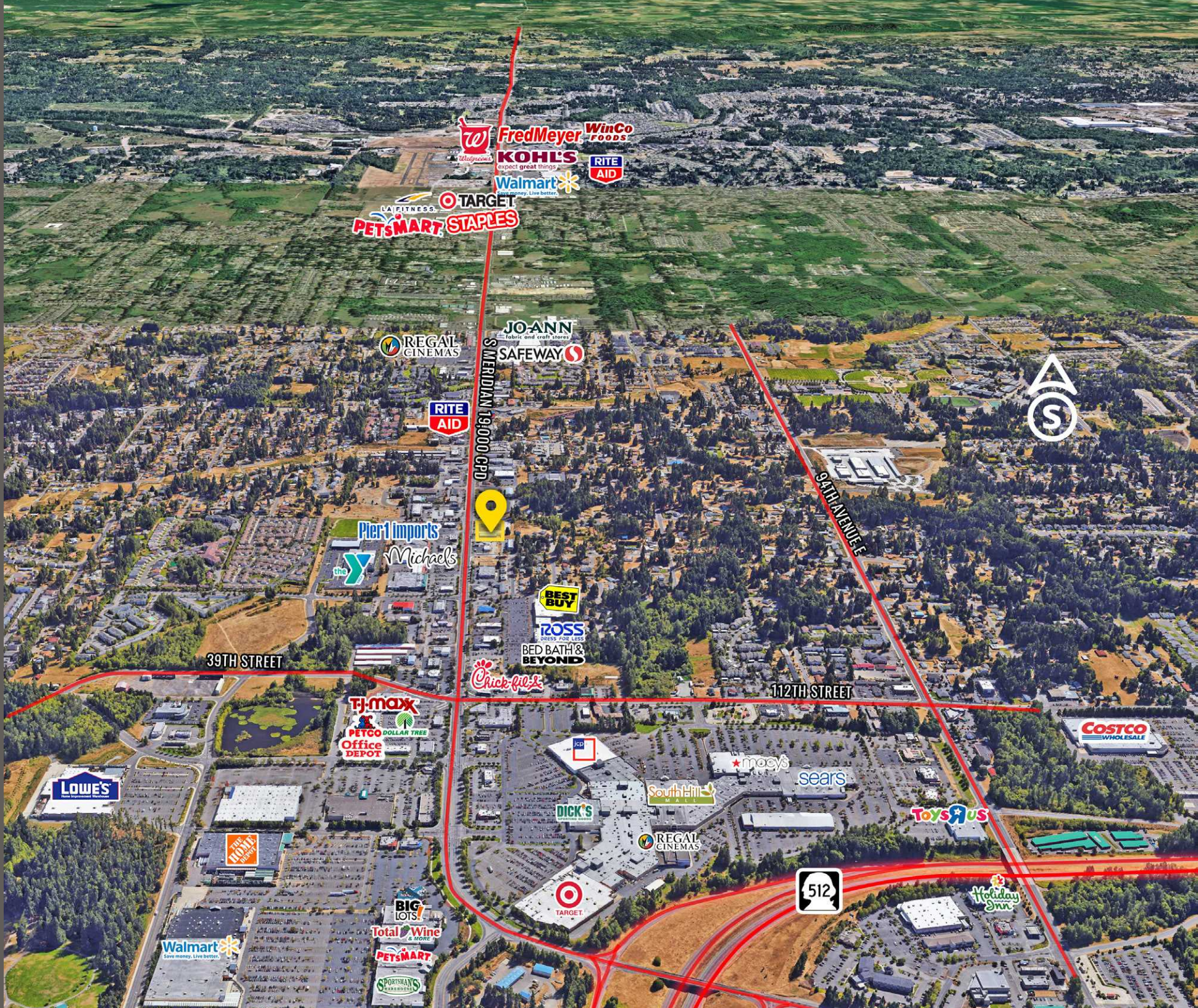
TENANTS



NEARBY TENANTS



LOCATION AERIAL



Fred Meyer  
WinCo Foods  
Kohl's  
Walmart  
RITE AID

LA FITNESS  
TARGET  
PETS MART  
STAPLES

REGAL CINEMAS  
JO-ANN  
SAFeway

RITE AID

S MERIDIAN 19,000 CPD



Pier 1 Imports  
the Y  
Michaels

BEST BUY  
ROSS  
BED BATH & BEYOND

Chick-fil-e

39TH STREET

112TH STREET

TJ-max  
PETCO  
DOLLAR TREE  
Office DEPOT

LOWE'S

THE HOME DEPOT

BIG LOTS!  
Total Wine  
PETS MART  
SPORTSMAN'S

DICK'S

South Hills

macy's

sears

Toys R Us

COSTCO WHOLESALE

REGAL CINEMAS

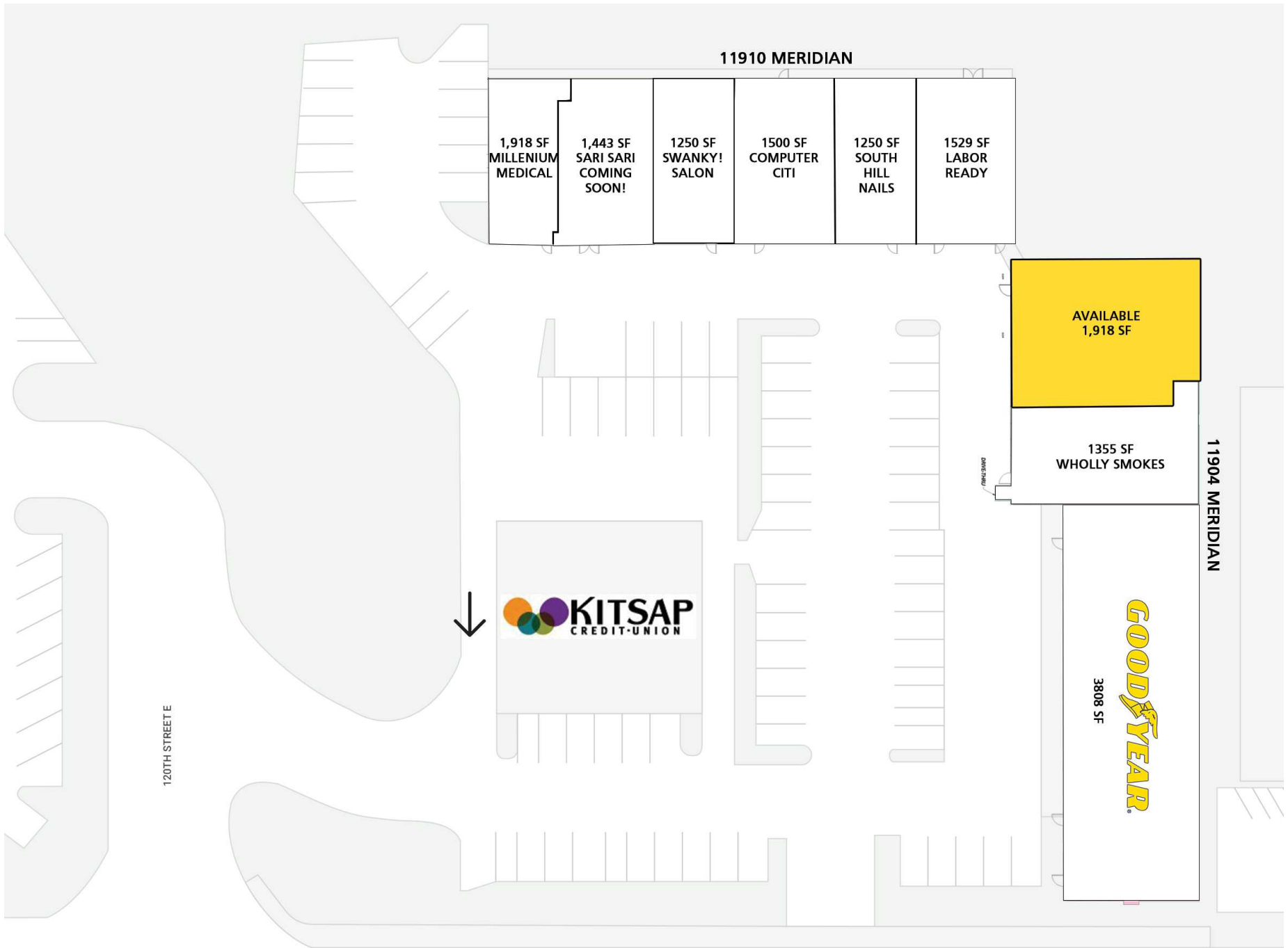
TARGET



Holiday Inn



# SITE PLAN



# DEMOGRAPHICS

## POPULATION

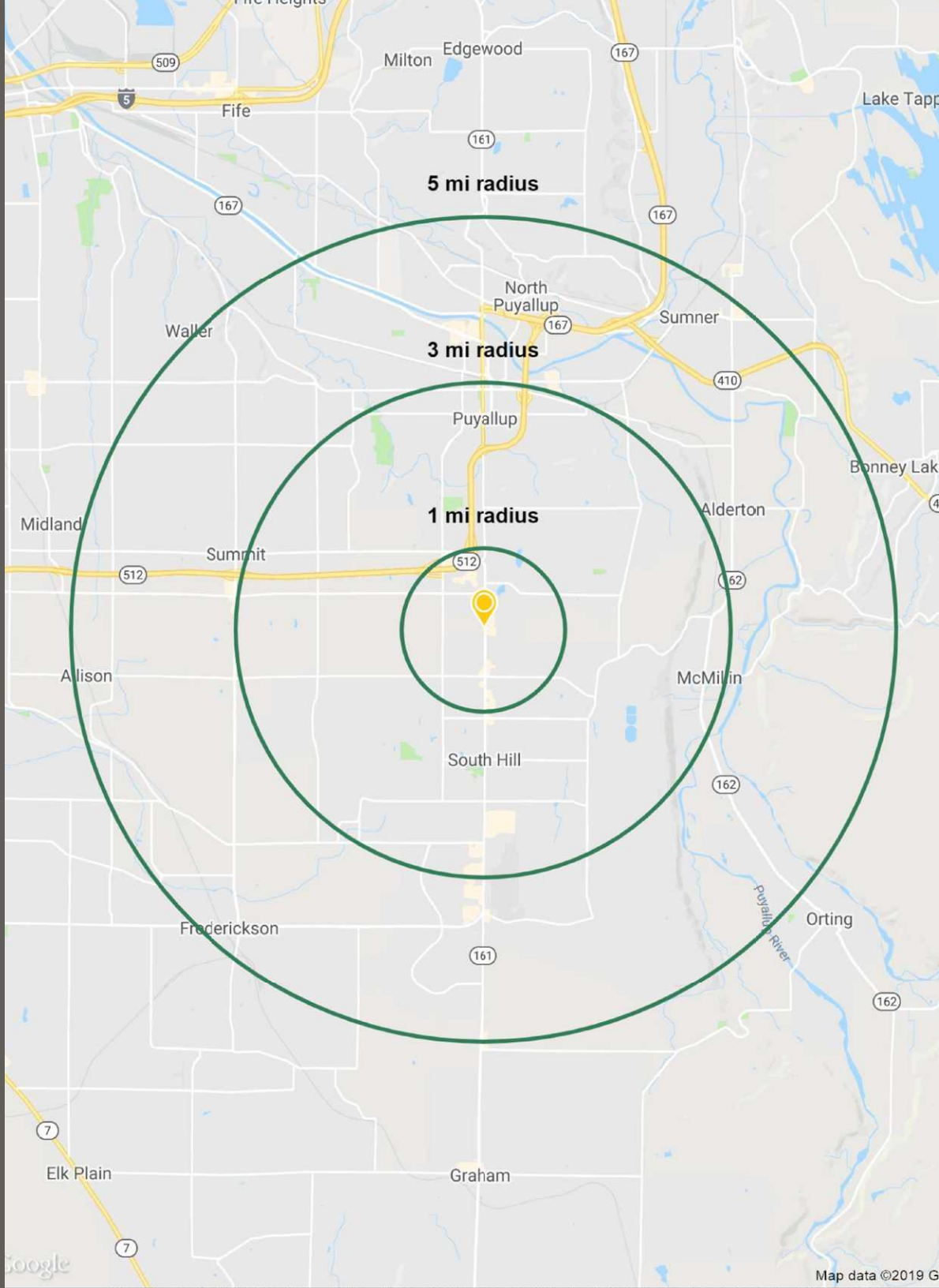
Mile 1	Mile 3	Mile 5
9,886	85,306	174,014

## AVERAGE HH INCOME

Mile 1	Mile 3	Mile 5
\$79,363	\$95,818	\$96,653

## DAYTIME POPULATION

Mile 1	Mile 3	Mile 5
9,851	54,916	102,563



SUMMARY



# CITY SUMMARY



**PUYALLUP, WA** is just 35 miles south of Seattle situated at the foot of scenic Mount Rainier. Puyallup plays host to the Washington State Fair, where over one million people attend each September. The city has a rich agricultural past but there is much more to Puyallup than meets the eye. The retail shopping centers, dining opportunities and a modern regional medical center are just some of the many amenities appreciated by residents and visitors.

TACOMA | KIRKLAND | PORTLAND | SEATTLE



**RETAIL FOCUSED. RESULTS DRIVEN.**

**BLAKE WEBER**

253.284.3646  
bweber@firstwesternproperties.com

**DON WHITTLES**

253.471.5509  
dwhittles@firstwesternproperties.com

**TIM WEBER**

253.471.5502  
tweber@firstwesternproperties.com



First Western Properties—Tacoma Inc. | 253.472.0404  
6402 Tacoma Mall Blvd, Tacoma, WA 98409 | fwp-inc.com

© First Western Properties, Inc. DISCLAIMER: The above information has been secured from sources believed to be reliable, however, no representations are made to its accuracy. Prospective tenants or buyers should consult their professional advisors and conduct their own independent investigation. Properties are subject to change in price and/or availability without notice.